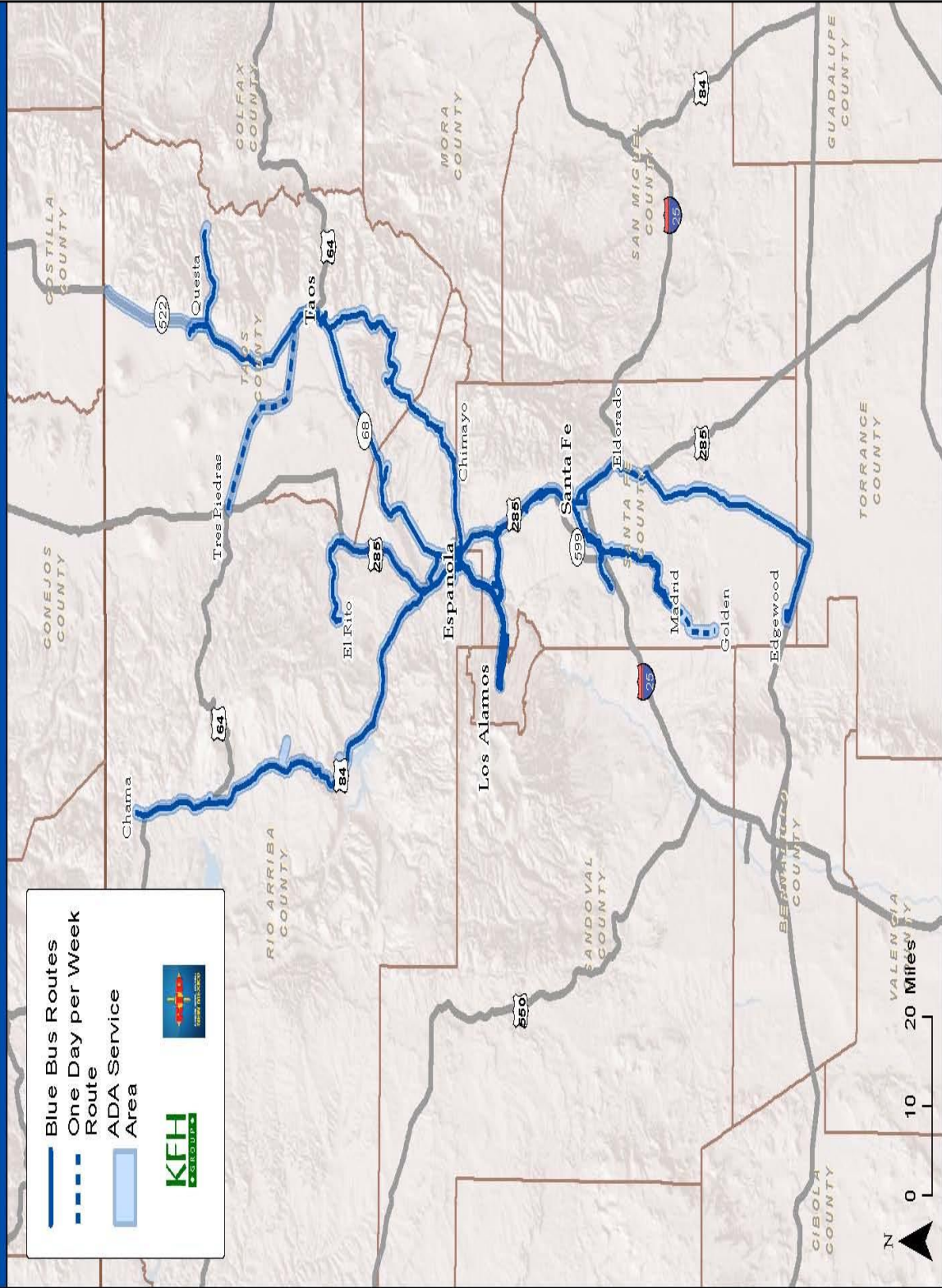


Santa Fe City Council

July 30, 2014

NCRTD Service Area

Figure 25: System Map and ADA Service Area



Communities Served – 50+!

Pueblos:

Ohkay Owingeh
San Ildefonso
Tesuque
Pojoaque
Santa Clara
Nambé

Los Alamos County:

Los Alamos

Taos County:

Taos
Questa
Costilla
Red River
Peñasco
UNM Taos-Klauer
La Lama
Cerro
Arroyo Hondo
Las Trampas
Chamisal
Rio Lucio
Rodarte
Vadito
Talpa
Pilar
Ranchos de Taos

Santa Fe County:

Santa Fe
Española
Eldorado
Edgewood
Lone Butte
Los Cerrillos
Moriarty
Chimayo
La Puebla
Stanley
Tesuque Village
Galisteo
Madrid

*and the facilities of

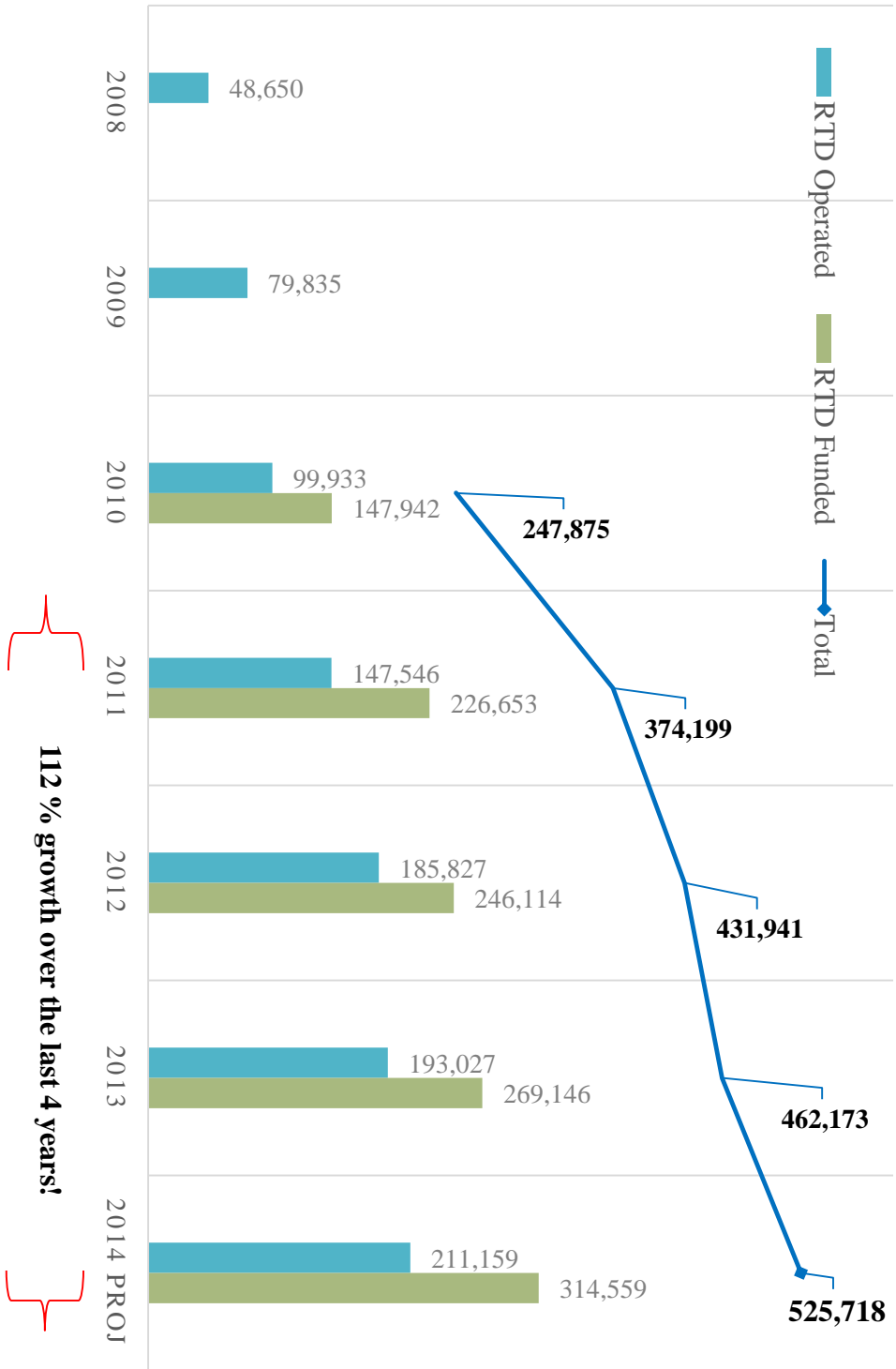
Oñate Military Complex
(Homeland Security, National
Guard, Troop Command)
NM Corrections Department
SF County Adult Detention Center

Ghost Ranch
Abiquiu
Chimayo
Cordova
Truchas
Ojo Sarco
Dixon
Embudo
Santa Clara
El Duende
Medanales
Hernandez
Velarde

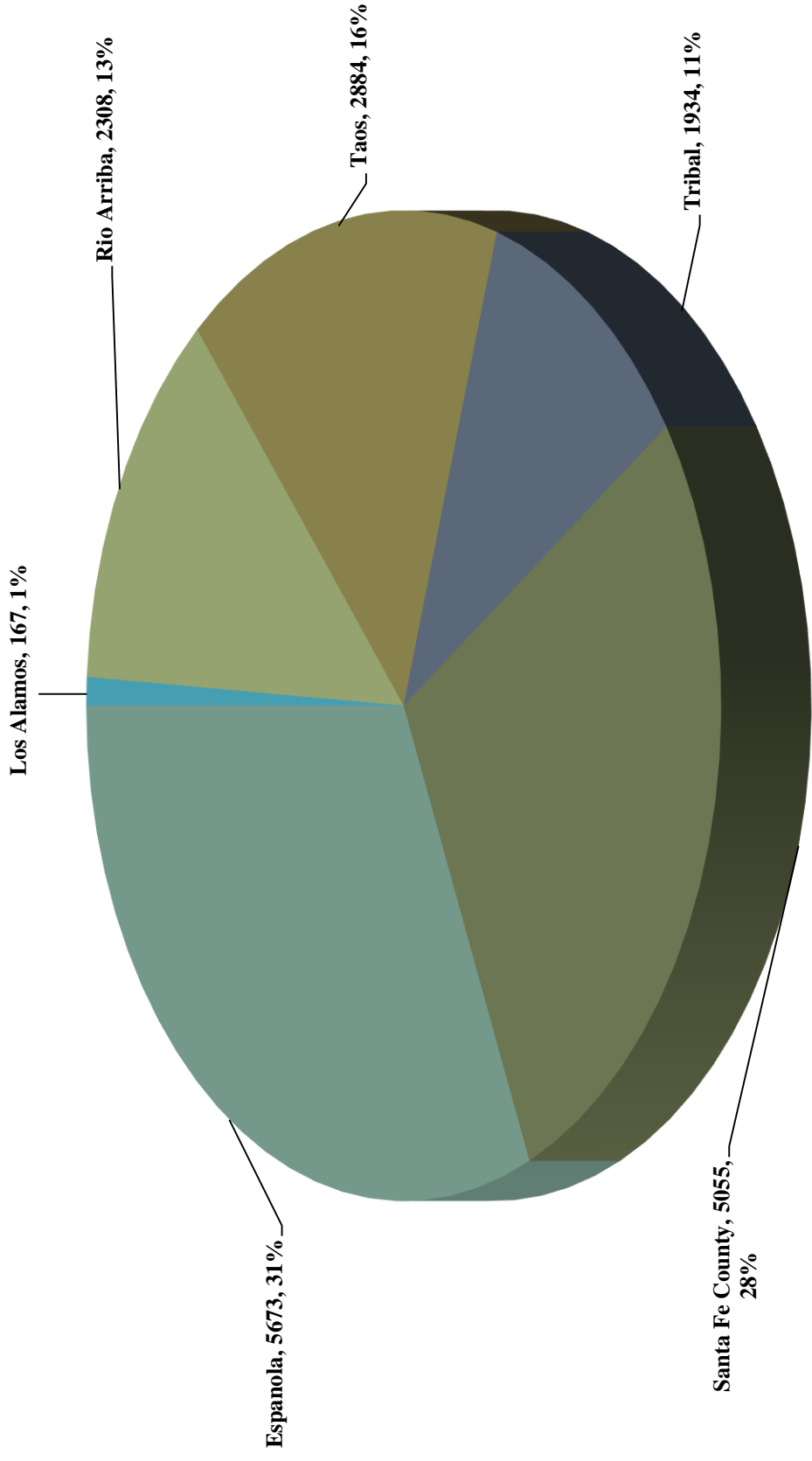
Rio Arriba County:

Española
El Rito
Ojo Caliente
Chama
Tierra Amarilla
Cebola
Canjilon

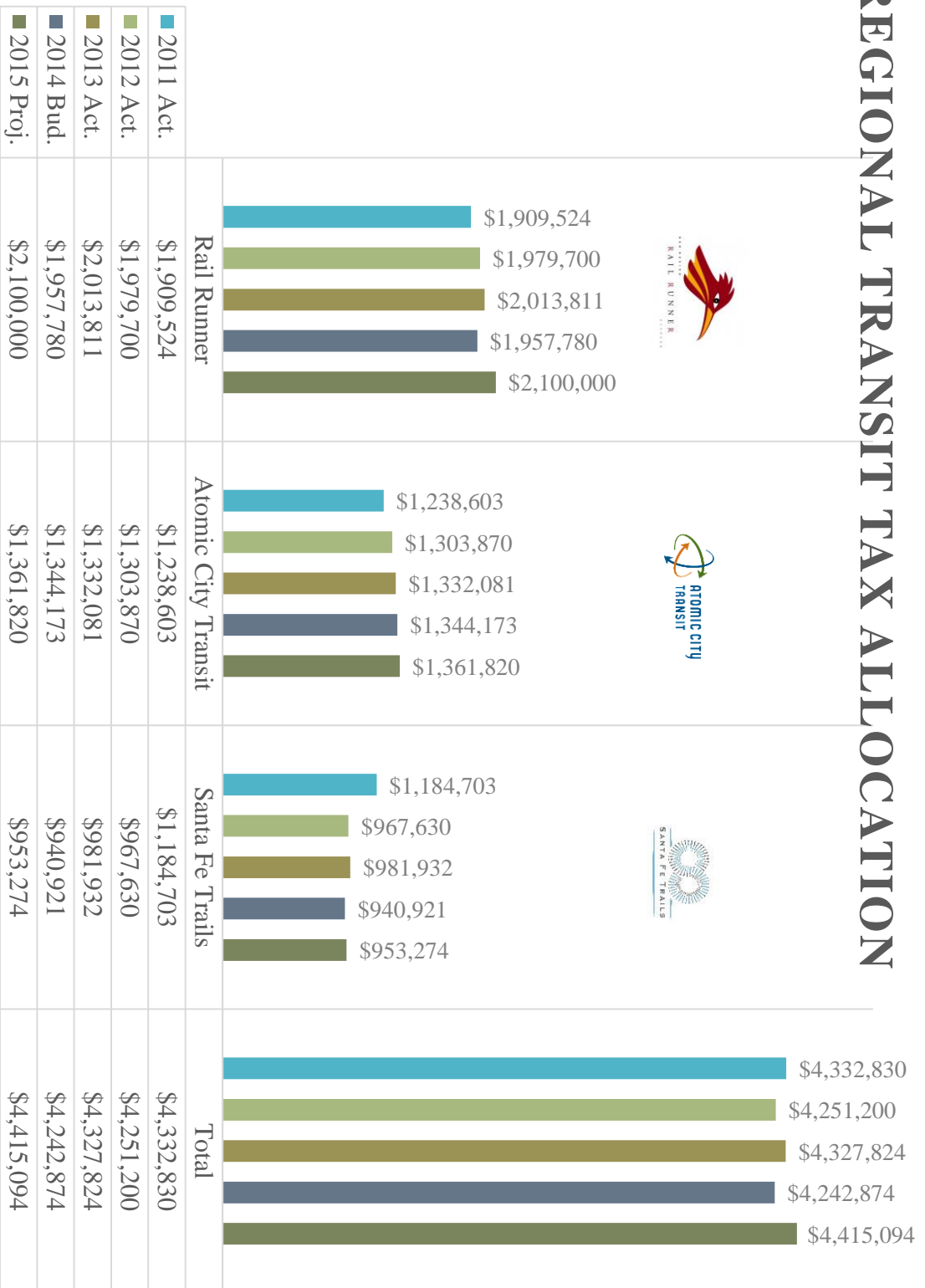
NCRTD Historical Ridership (Fiscal Years)



Ridership by County

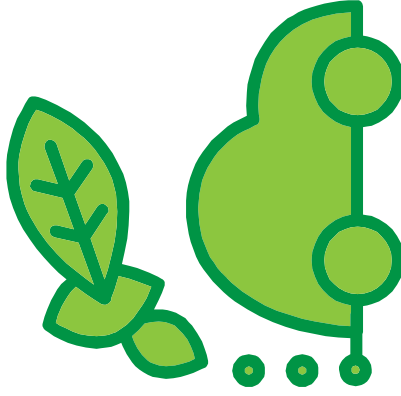


REGIONAL TRANSIT TAX ALLOCATION

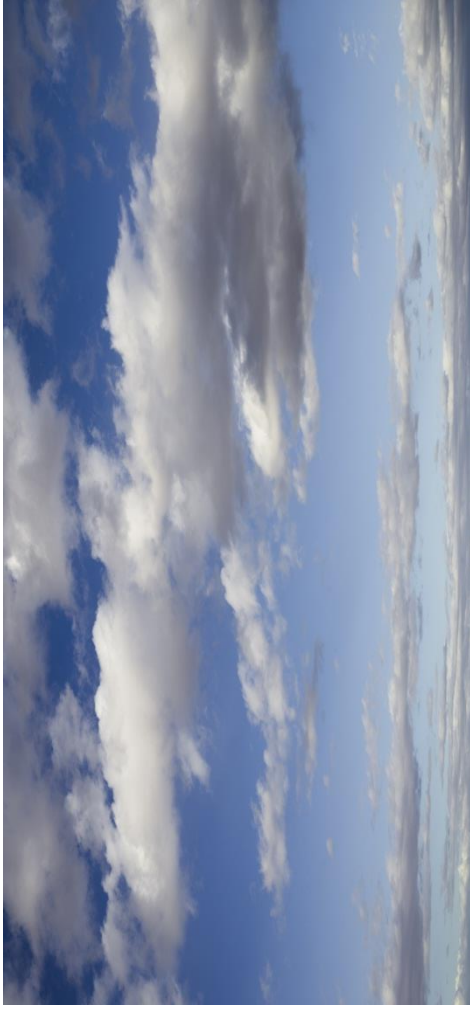


Fewer cars on the road,
reduced carbon in the atmosphere:

FY2013



More than 2,161 tons of carbon
emissions were reduced; equaling
more than 4,322,000 lbs.



Greener New Mexico

4.35 million vehicle miles removed from
our streets and highways which equates
to traveling around the world 174 times



Fiscal Year 2014

Service Plan Update SF Routes - current recommendations:

- Golden Extension, **six month trial basis** – one day per week, two round trips – (599 Service Expansion)
- La Cienega/Las Golondrinas Route – will **need future funding** - \$114,000/yr and \$120,000 capital (have submitted revised FY 15 funding request to NMDOT for this route)
- Santa Fe National Forest/Ski Santa Fe – will **need future funding** – costs unknown at this time, Forest Service Access Program (FLAP) funding request in process. Have held discussions with private and public sector partners. Discussions with Tesuque Pueblo also occurring.
- Pojoaque/Nambe – route being **converting to a dial-a-ride**, costs and service hours to remain the same at this time
- Eldorado Route – modifying mid-day service in order to add the **Edgewood mid day** round trip –**six month trial basis** – cost increase of \$19,000
- All routes will now be Para Transit compliant through a flex-route service that when scheduled will allow the bus to deviate up to ¾ mile from the route
- Regional Premium Express – Weekends i.e. Taos Express, Santa Fe and Bandelier National Monument (ACT connect in White Rock), **funding through fares and other partnerships**
- More service changes that pertain to our other routes – copy of the plan is on our website

➤ Intelligent Transportation System Improvements, such as “trip planning”, google transit, smart phone app’s, “where’s my bus”, QR tags and text messaging, Automatic Vehicle Locators and Computer Aided Dispatch

Route	Arrival Time	Duration
Red Link	10:16 AM Arrival	1 min
Blue Loop	10:18 AM Arrival	1 min
Green Link	10:22 AM Arrival	7 mins
Boalsburg	10:32 AM Arrival	17 mins
Red Link	10:33 AM Arrival	18 mins
Toftrees/Scenery...	10:34 AM Arrival	19 mins
Red Link	10:39 AM Arrival	35 mins



Ongoing Collaborative Efforts

- ❑ Veteran's Transportation and Community Living Initiative - funding to improve transportation options for veterans and their families – joint outreach efforts (NMDOT, Park and Ride, SF Trails, NCRTD and RMRTD)
- ❑ Regional Service Funding for specific routes and special events in the City of SF (Folk Art, Indian, Spanish, Zozobra)
- ❑ CommUNITY Day at the Plaza
- ❑ Annual Legislative Reception hosted by SF Chamber (we share cost for sponsorship and a booth with SF Trails and Rail Runner)
- ❑ SF MPO Transit Service Plan
- ❑ RTD Long Range Service Plan
- ❑ Updating of Intergovernmental Contract
- ❑ SF Ski/SF National Forest Service

September 16, 2004

Certified by State Transportation Commission as the First Regional Transit District formed in the State of New Mexico serving North Central New Mexico!

September 16, 2014 a decade latter.
Hope you will join us to celebrate 10
years of service to the constituents of
the counties of Santa Fe, Los
Alamos, Rio Arriba and Taos !!!!!