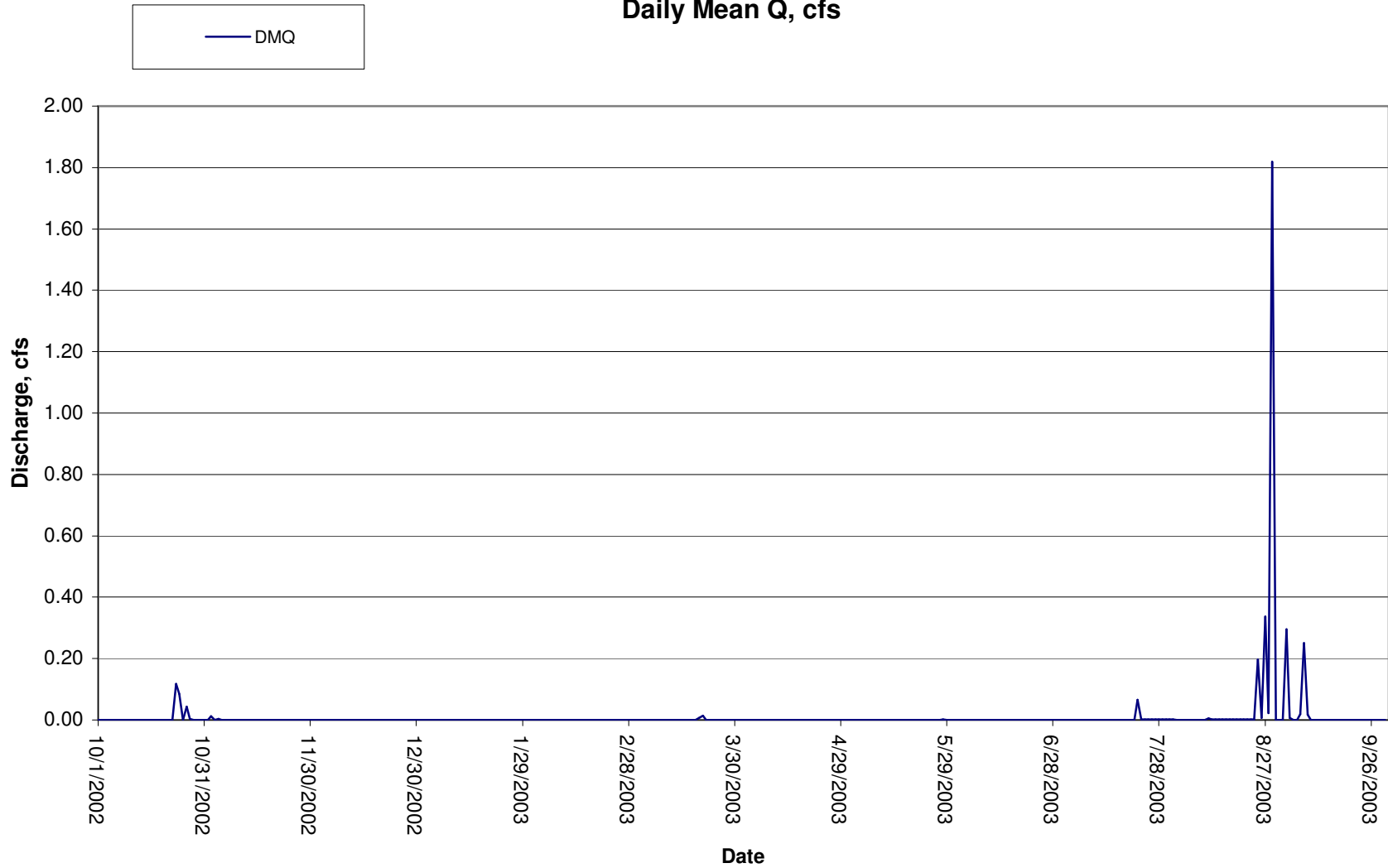


Water Year 2003 - Provisional
Santa Fe River at Ricardo Road
Daily Mean Q, cfs

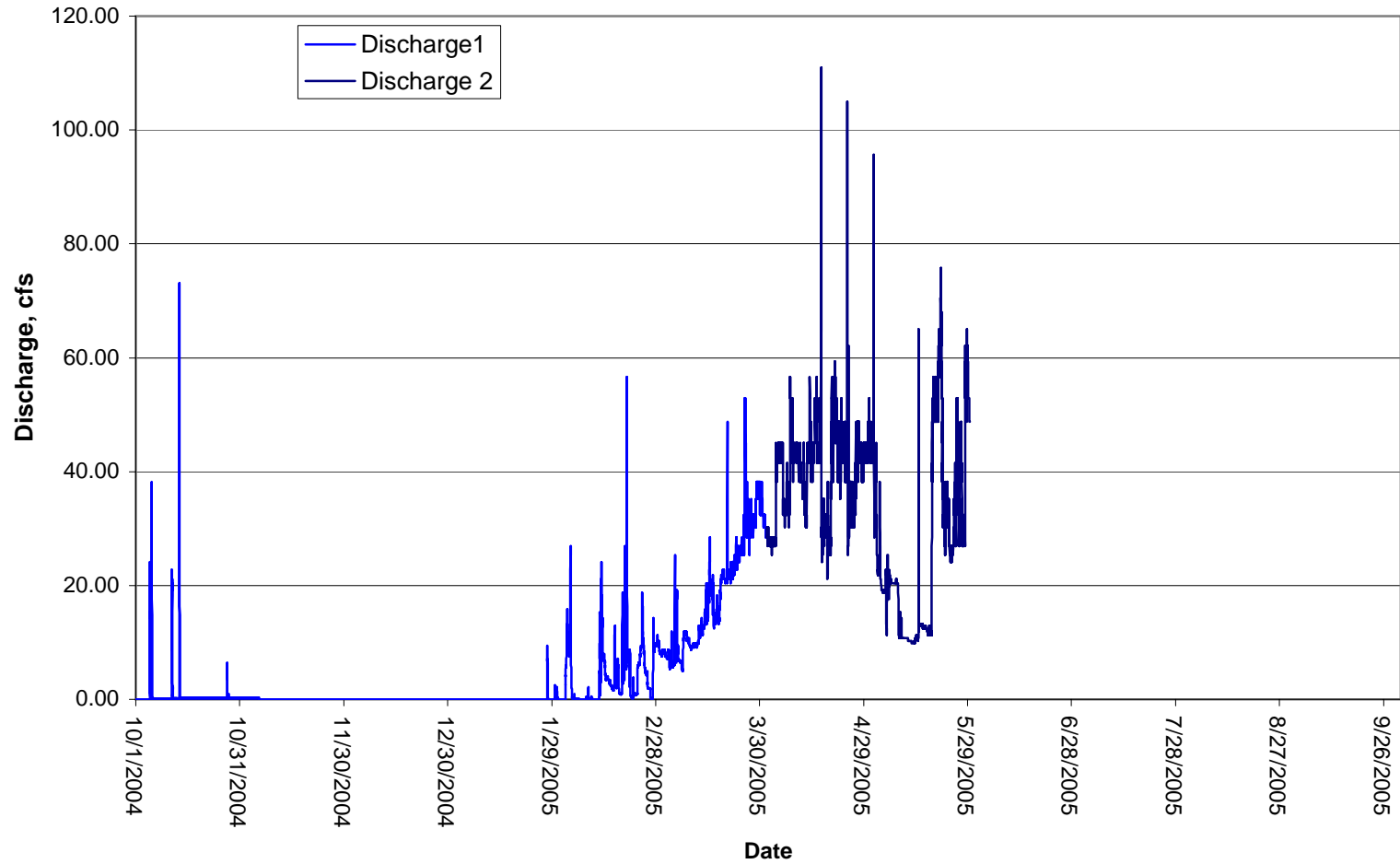


WATERSHED WEST

Engineering • Research • Restoration

1288 Lejano Lane • Santa Fe, NM 87501 • tel 505.982.5180 • fax 505.982.9208 • www.watershedwest.com

Water Year 2005 - Provisional Santa Fe River at Ricardo Rd High Resolution 15 min Q



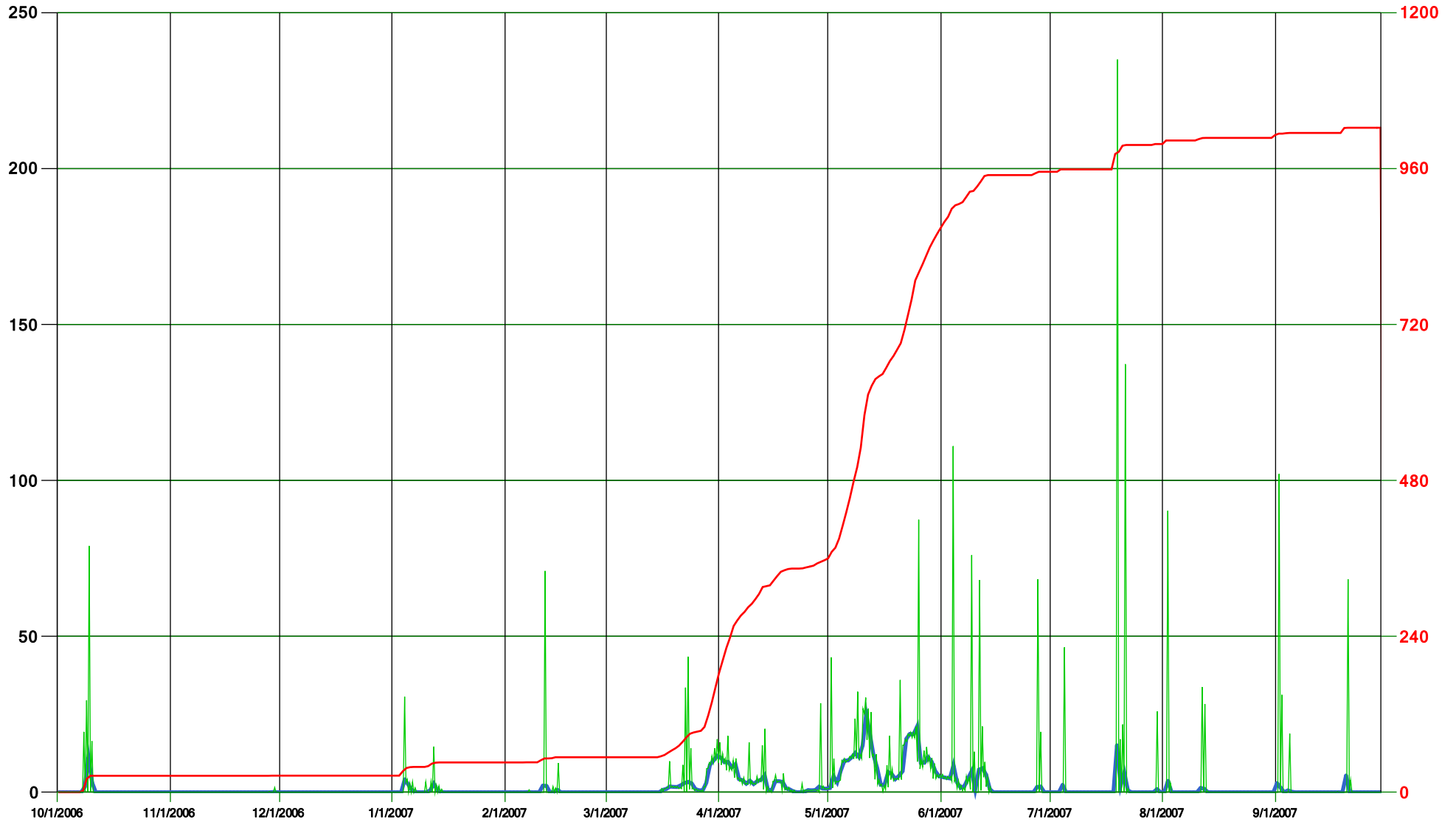
WATERSHED WEST

Engineering • Research • Restoration

1288 Lejano Lane • Santa Fe, NM 87501 • tel 505.982.5180 • fax 505.982.9208 • www.watershedwest.com

WY 2007 HYDROGRAPH

— Daily Mean — Q15 — Cumulative AF



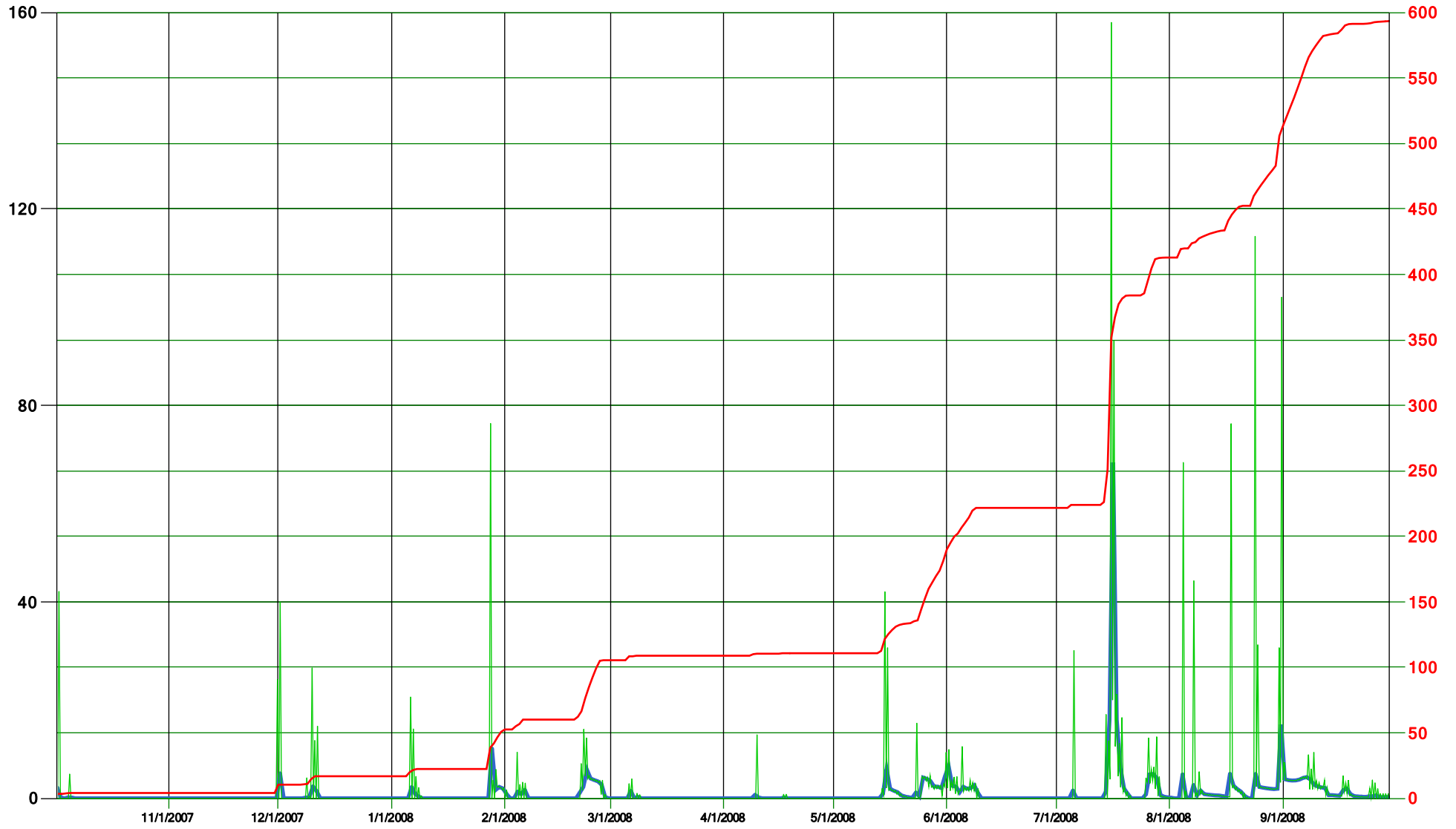
WATERSHED WEST FINAL DATA
WATER YEAR 2007
08316535 Santa Fe River at Ricardo Rd.

DAILY MEAN VALUES , cfs												
	Oct-06	Nov-06	Dec-06	Jan-07	Feb-07	Mar-07	Apr-07	May-07	Jun-07	Jul-07	Aug-07	Sep-07
1	0.00	0.00	0.00	0.00	0.00	0.00	11.06 e	1.39 e	4.76	0.00	0.00	2.19
2	0.00	0.00	0.00	0.00	0.00	0.00	9.68 e	5.17 e	4.44	0.00	2.75	1.17
3	0.00	0.00	0.00	0.00	0.00	0.00	9.76 e	3.17 e	4.05	0.00	0.02	0.00
4	0.00	0.00	0.00	3.41	0.00	0.00	8.04 e	7.00 e	6.20	1.85	0.00	0.38
5	0.00	0.00	0.00	2.54	0.00	0.00	9.06 e	10.17 e	2.69	0.00	0.00	0.19
6	0.00	0.00	0.00	0.65	0.00	0.00	4.20 e	10.23 e	0.96	0.00	0.00	0.00
7	0.00	0.00	0.00	0.14	0.09	0.00	3.87 e	11.24 e	1.46	0.00	0.00	0.00
8	1.31	0.00	0.00	0.00	0.00	0.00	2.77 e	12.63 e	4.00	0.00	0.00	0.00
9	9.04	0.00	0.00	0.00	0.00	0.00	3.72 e	11.33 e	4.11	0.00	0.00	0.00
10	2.48	0.00	0.00	0.04	0.00	0.00	2.66 e	15.03 e	0.63	0.00	0.00	0.00
11	0.00	0.00	0.00	0.63	1.65	0.00	3.57 e	25.15 e	3.36	0.00	1.09	0.00
12	0.00	0.00	0.00	1.96	1.45	0.00	3.97 e	16.02 e	4.00	0.00	0.81	0.00
13	0.00	0.00	0.00	0.72	0.00	0.00	5.44 e	6.88	4.18	0.00	0.03	0.00
14	0.00	0.00	0.00	0.13	0.10	0.00	0.63 e	5.12	0.75	0.00	0.00	0.00
15	0.00	0.00	0.00	0.00	0.77	0.00	0.68 e	2.08	0.00	0.00	0.00	0.00
16	0.00	0.00	0.00	0.00	0.00	0.71	3.60 e	1.85	0.00	0.00	0.00	0.00
17	0.00	0.00	0.00	0.00	0.00	1.06	3.56 e	4.87	0.00	0.00	0.00	0.00
18	0.00	0.00	0.00	0.00	0.00	1.77	3.34 e	5.22	0.00	0.00	0.00	0.00
19	0.00	0.00	0.00	0.00	0.00	1.75	1.24 e	4.00	0.00	11.99	0.00	0.00
20	0.00	0.00	0.00	0.00	0.00	1.68	0.88 e	4.76	0.00	1.66	0.00	3.79
21	0.00	0.00	0.00	0.00	0.00	2.01	0.30 e	5.05	0.00	4.68	0.00	0.17
22	0.00	0.00	0.00	0.00	0.00	3.00 e	0.00 e	10.32	0.00	0.58	0.00	0.00
23	0.00	0.00	0.00	0.00	0.00	3.36 e	0.03 e	11.95	0.00	0.00	0.00	0.00
24	0.00	0.00	0.00	0.00	0.00	2.84 e	0.19 e	11.87	0.00	0.00	0.00	0.00
25	0.00	0.00	0.00	0.00	0.00	1.04 e	0.71 e	14.58	0.00	0.00	0.00	0.00
26	0.00	0.00	0.00	0.00	0.00	0.66 e	0.66 e	6.30	0.00	0.00	0.00	0.00
27	0.00	0.00	0.00	0.00	0.00	0.66 e	0.75 e	6.29	1.34	0.00	0.00	0.00
28	0.00	0.01	0.00	0.00	0.00	3.03 e	1.78 e	6.73	1.23	0.00	0.00	0.00
29	0.00	0.12	0.00	0.00	-----	8.78 e	1.22 e	6.37	0.00	0.00	0.00	0.00
30	0.00	0.00	0.00	0.00	-----	10.20 e	1.17 e	5.37	0.00	0.75	0.00	0.00
31	0.00	-----	0.00	0.00	-----	11.70 e	-----	5.09	-----	0.00	0.00	-----
Total	12.84	0.13	0.00	10.22	4.06	54.24	98.54	253.24	48.16	21.51	4.71	7.90
Mean	0.41	0.00	0.00	0.33	0.15	1.75	3.28	8.17	1.61	0.69	0.15	0.26
Max	9.04	0.12	0.00	3.41	1.65	11.70	11.06	25.15	6.20	11.99	2.75	3.79
Min	0.000	0.000	0.000	0.000	0.000	0.000	0.000	1.390	0.000	0.000	0.000	0.000
Ac-Ft	25.46	0.25	0.00	20.27	8.06	107.58	195.46	502.29	95.53	42.67	9.35	15.67
WTR YEAR	2007	TOTAL	515.55	MEAN	1.41	MAX	25.15	MIN	0.000	AC-FT	1022.58	

Estimates: Control weir undermined during period 3/22/07 to 5/12/07
Values estimated by regression of values from SFR abv. St Francis

WY 2008 HYDROGRAPH

— Daily Mean — Q15 — Cumulative AF



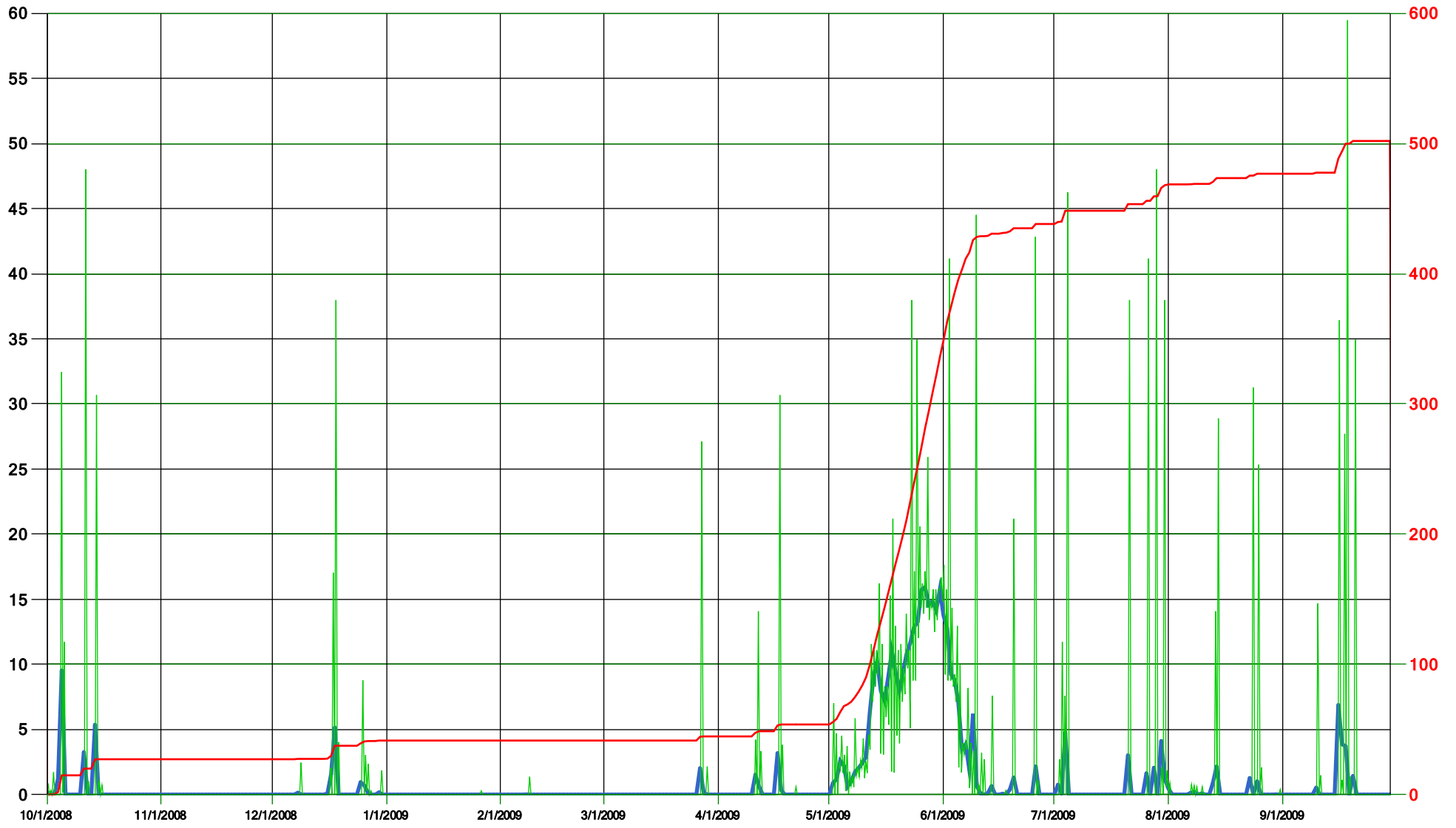
WATERSHED WEST FINAL DATA
WATER YEAR 2008
08316535 Santa Fe River at Ricardo Rd.

DAILY MEAN VALUES , cfs

	Oct-07	Nov-07	Dec-07	Jan-08	Feb-08	Mar-08	Apr-08	May-08	Jun-08	Jul-08	Aug-08	Sep-08
1	1.52	0.00	3.22 e	0.00	0.89	0.00	0.00	0.00	4.56	0.00	0.00	3.80
2	0.17	0.00	0.00 e	0.00	0.00	0.00	0.00	0.00	2.54	0.00	0.00	3.64
3	0.00	0.00	0.00 e	0.00	0.00	0.00	0.00	0.00	2.34	0.00	0.00	3.57
4	0.19	0.00	0.00 e	0.00	1.24	0.00	0.00	0.00	1.18	0.00	3.30	3.60
5	0.12	0.00	0.00 e	0.00	0.86	0.00	0.00	0.00	2.24	1.16	0.26	3.75
6	0.00	0.00	0.00 e	1.59	1.72	1.50	0.00	0.00	1.91	0.00	0.00	3.98
7	0.00	0.00	0.00 e	0.87	0.00	0.00	0.00	0.00	2.02	0.00	1.93	4.20
8	0.00	0.00	0.14 e	0.32	0.00	0.25	0.00	0.00	2.65	0.00	0.47	3.67
9	0.00	0.00	0.22 e	0.00	0.00	0.00	0.61	0.00	1.04	0.00	1.41	2.43
10	0.00	0.00	1.80 e	0.00	0.00	0.00	0.17	0.00	0.00	0.00	0.70	2.13
11	0.00	0.00	1.10 e	0.00	0.00	0.00	0.00	0.00	0.00	0.00	0.60	1.93
12	0.00	0.00	0.00 e	0.00	0.00	0.00	0.00	0.00	0.00	0.00	0.53	1.78
13	0.00	0.00	0.00 e	0.00	0.00	0.00	0.00	0.00	0.00	0.00	0.44	0.30
14	0.00	0.00	0.00 e	0.00	0.00	0.00	0.00	0.94	0.00	1.08 e	0.41	0.30
15	0.00	0.00	0.00 e	0.00	0.00	0.00	0.00	4.52	0.00	12.65 e	0.29	0.24
16	0.00	0.00	0.00 e	0.00	0.00	0.00	0.00	1.95	0.00	50.60 e	0.15	0.18
17	0.00	0.00	0.00 e	0.00	0.00	0.00	0.15	1.58	0.00	7.95	3.68	1.38
18	0.00	0.00	0.00 e	0.00	0.00	0.00	0.00	1.27	0.00	4.96	2.42	1.65
19	0.00	0.00	0.00 e	0.00	0.00	0.00	0.00	0.64	0.00	2.22	1.78	0.49
20	0.00	0.00	0.00 e	0.00	0.00	0.00	0.00	0.36	0.00	1.07	1.21	0.11
21	0.00	0.00 e	0.00 e	0.00	1.09	0.00	0.00	0.21	0.00	0.09	0.36	0.01
22	0.00	0.00 e	0.00 e	0.00	2.09	0.00	0.00	0.10	0.00	0.00	0.00	0.00
23	0.00	0.00 e	0.00	0.00	5.08	0.00	0.00	0.76	0.00	0.00	0.00	0.00
24	0.00	0.00 e	0.00	0.00	4.13	0.00	0.00	0.37	0.00	0.00	3.74	0.08
25	0.00	0.00 e	0.00	0.00	3.83	0.00	0.00	4.35	0.00	0.85	2.22	0.18
26	0.00	0.00 e	0.00	0.00	3.56	0.00	0.00	4.08	0.00	4.70	2.07	0.36
27	0.00	0.00 e	0.00	0.00	2.84	0.00	0.00	3.65	0.00	4.86	1.93	0.11
28	0.00	0.00 e	0.00	8.16	0.23	0.00	0.00	2.47	0.00	3.53	1.85	0.12
29	0.00	0.00 e	0.00	1.75	0.00	0.00	0.00	2.43	0.00	0.49	1.75	0.12
30	0.00	0.00 e	0.00	2.37	-----	0.00	0.00	2.15	0.00	0.14	1.84	0.06
31	0.00	-----	0.00	2.05	-----	0.00	-----	3.63	-----	0.02	11.53	-----
Total	2.00	0.00	6.48	17.10	27.56	1.75	0.92	35.48	20.48	96.38	46.86	44.17
Mean	0.06	0.00	0.21	0.55	0.95	0.06	0.03	1.14	0.68	3.11	1.51	1.47
Max	1.52	0.00	3.22	8.16	5.08	1.50	0.61	4.52	4.56	50.60	11.53	4.20
Min	0.000	0.000	0.000	0.000	0.000	0.000	0.000	0.000	0.000	0.000	0.000	0.000
Ac-Ft	3.97	0.00	12.85	33.92	54.66	3.47	1.83	70.37	40.62	191.16	92.95	87.61
WTR YEAR	2008	TOTAL	299.18	MEAN	0.82	MAX	50.60	MIN	0.000	AC-FT	593.41	

WY 2009 HYDROGRAPH

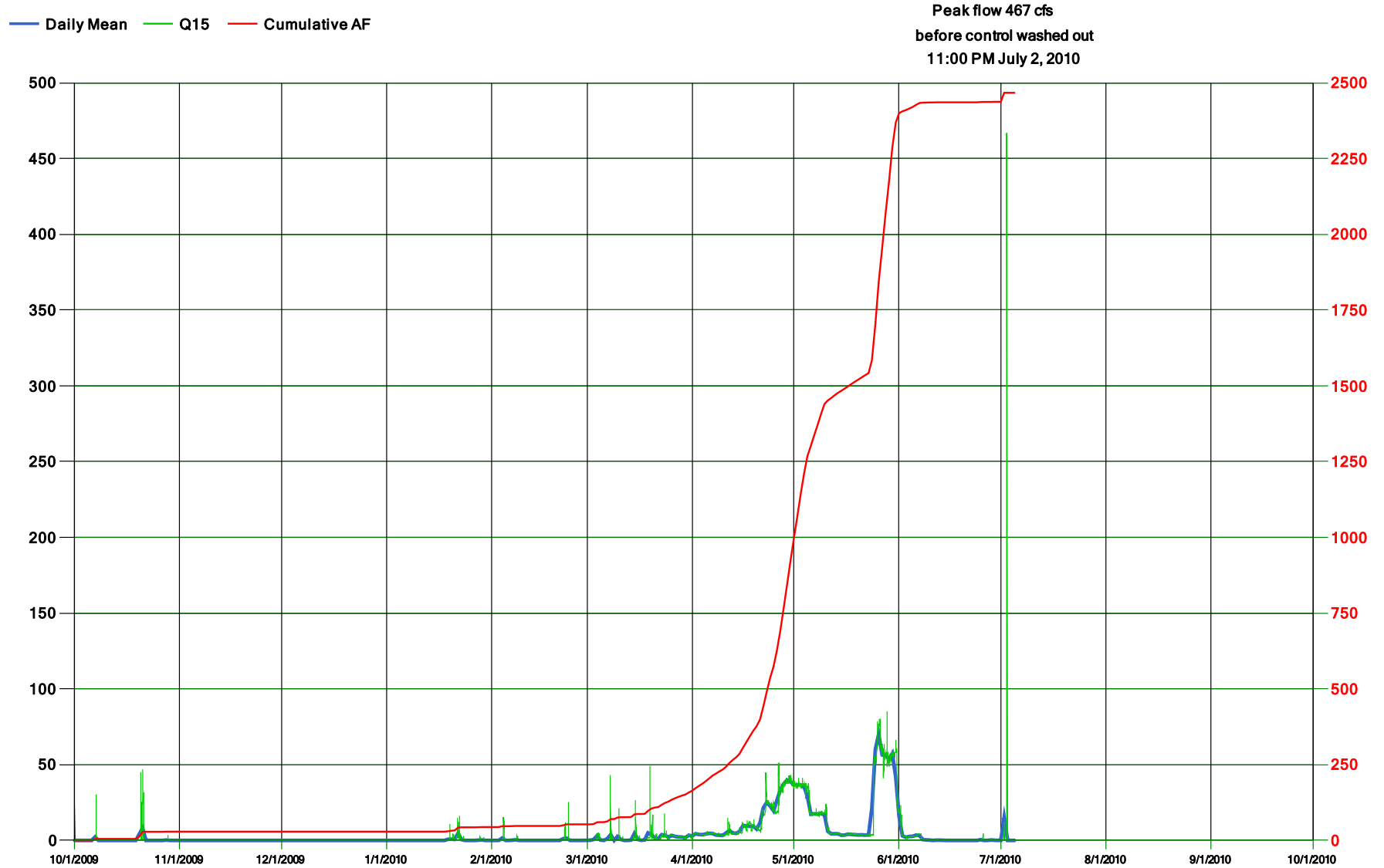
— Daily Mean — Q15 — Cumulative AF



WATERSHED WEST FINAL DATA
WATER YEAR 2009
08316535 Santa Fe River at Ricardo Rd.

DAILY MEAN VALUES , cfs												
	Oct-08	Nov-08	Dec-08	Jan-09	Feb-09	Mar-09	Apr-09	May-09	Jun-09	Jul-09	Aug-09	Sep-09
1	0.08	0.00	0.00	0.00	0.00	0.00	0.00	0.00	6.65	0.00	0.31	0.00
2	0.04	0.00	0.00	0.00	0.00	0.00	0.00	0.89	7.23	0.75	0.00	0.00
3	0.00	0.00	0.00	0.00	0.00	0.00	0.00	1.22	5.66	0.16	0.00	0.00
4	0.92	0.00	0.00	0.00	0.00	0.00	0.00	2.68	5.58	4.17	0.00	0.00
5	6.45	0.00	0.00	0.00	0.00	0.00	0.00	2.31	5.02	0.02	0.00	0.00
6	0.00	0.00	0.00	0.00	0.00	0.00	0.00	0.64	3.86	0.00	0.00	0.00
7	0.00	0.00	0.00	0.00	0.00	0.00	0.00	1.03	4.15	0.01	0.06	0.00
8	0.00	0.00	0.15	0.00	0.02	0.00	0.00	1.81	2.44	0.02	0.13	0.00
9	0.00	0.00	0.00	0.00	0.00	0.00	0.00	2.11	4.80	0.00	0.00	0.00
10	0.00	0.00	0.00	0.00	0.00	0.00	0.00	2.50	1.24	0.00	0.04	0.41
11	2.56	0.00	0.00	0.00	0.00	0.00	1.40	2.99	0.25	0.00	0.00	0.00
12	0.01	0.00	0.00	0.00	0.00	0.00	0.60	4.95	0.00	0.00	0.00	0.00
13	0.00	0.00	0.00	0.00	0.00	0.00	0.00	5.62	0.12	0.00	0.76	0.00
14	3.61	0.00	0.00	0.00	0.00	0.00	0.00	5.88	0.84	0.00	1.46	0.00
15	0.02	0.00	0.00	0.00	0.00	0.00	0.00	5.22	0.00	0.00	0.00	0.00
16	0.00	0.00	0.10	0.00	0.00	0.00	0.00	5.27	0.00	0.00	0.00	5.48
17	0.00	0.00	1.10	0.00	0.00	0.00	2.27	5.66	0.28	0.00	0.00	2.77
18	0.00	0.00	3.87	0.00	0.00	0.00	0.36	5.79	0.14	0.00	0.00	3.01
19	0.00	0.00	0.00	0.00	0.00	0.00	0.00	5.70	0.54	0.00	0.00	0.00
20	0.00	0.00	0.00	0.00	0.00	0.00	0.00	5.38	1.15	0.00	0.00	1.03
21	0.00	0.00	0.00	0.00	0.00	0.00	0.01	5.69	0.00	2.51	0.00	0.00
22	0.00	0.00	0.00	0.00	0.00	0.00	0.00	6.01	0.00	0.00	0.00	0.00
23	0.00	0.00	0.00	0.00	0.00	0.00	0.00	6.99	0.00	0.00	0.97	0.00
24	0.00	0.00	0.00	0.00	0.00	0.00	0.00	7.17	0.00	0.00	0.00	0.00
25	0.00	0.00	0.93	0.00	0.00	0.00	0.00	6.59	0.00	0.00	0.72	0.00
26	0.00	0.00	0.75	0.00	0.00	0.00	0.00	7.07	1.68	1.32	0.00	0.00
27	0.00	0.00	0.16	0.00	0.00	1.44	0.00	7.42	0.00	0.00	0.00	0.00
28	0.00	0.00	0.00	0.00	0.00	0.16	0.00	6.82	0.00	1.73	0.00	0.00
29	0.00	0.00	0.00	0.00	-----	0.00	0.00	6.88	0.00	0.02	0.00	0.00
30	0.00	0.00	0.18	0.00	-----	0.00	0.00	6.73	0.00	3.21	0.01	0.00
31	0.00	-----	0.00	0.00	-----	0.00	-----	7.07	-----	1.06	0.00	-----
Total	13.69	0.00	7.24	0.00	0.02	1.60	4.64	142.11	51.65	14.98	4.45	12.69
Mean	0.44	0.00	0.23	0.00	0.00	0.05	0.15	4.58	1.72	0.48	0.14	0.42
Max	6.45	0.00	3.87	0.00	0.02	1.44	2.27	7.42	7.23	4.17	1.46	5.48
Min	0.000	0.000	0.000	0.000	0.000	0.000	0.000	0.000	0.000	0.000	0.000	0.000
Ac-Ft	27.16	0.00	14.35	0.01	0.04	3.17	9.20	281.87	102.44	29.72	8.83	25.17
WTR YEAR	2009	TOTAL	253.07	MEAN	0.69	MAX	7.42	MIN	0.000	AC-FT	501.96	

WY 2010 HYDROGRAPH



WATER YEAR 2010
08316535 Santa Fe River at Ricardo Rd.

DAILY MEAN VALUES , cfs

	Oct-09	Nov-09	Dec-09	Jan-10	Feb-10	Mar-10	Apr-10	May-10	Jun-10	Jul-10	Aug-10	Sep-10
1	0.00	0.00	0.00	0.00	0.00	0.06	2.78	36.60	15.90	0.01	0.00	0.00
2	0.00	0.00	0.00	0.00	0.00	0.02	4.30	36.70	2.94	15.01	0.00	0.00
3	0.00	0.00	0.00	0.00	0.00	0.54	3.85	36.65	2.03	0.00	0.00	0.00
4	0.00	0.00	0.00	0.00	1.47	3.02	3.66	35.19	2.57	0.00	0.00	0.00
5	0.00	0.00	0.00	0.00	0.00	0.20	4.17	28.89	2.64	0.00	0.00	0.00
6	0.00	0.00	0.00	0.00	0.00	0.00	4.61	17.24	3.42	0.00	0.00	0.00
7	2.26	0.00	0.00	0.00	0.11	1.15	4.54	17.46	3.16	0.00	0.00	0.00
8	0.00	0.00	0.00	0.00	0.31	3.80	3.53	17.32	0.52	0.00	0.00	0.00
9	0.00	0.00	0.00	0.00	0.00	0.00	3.40	17.74	0.29	0.00	0.00	0.00
10	0.00	0.00	0.00	0.00	0.00	2.56	3.27	16.79	0.18	0.00	0.00	0.00
11	0.00	0.00	0.00	0.00	0.00	0.55	4.83	5.98	0.00	0.00	0.00	0.00
12	0.00	0.00	0.00	0.00	0.00	0.00	6.36	4.30	0.14	0.00	0.00	0.00
13	0.00	0.00	0.00	0.00	0.00	0.00	4.82	4.33	0.12	0.00	0.00	0.00
14	0.00	0.00	0.00	0.00	0.00	0.22	4.58	4.27	0.02	0.00	0.00	0.00
15	0.00	0.00	0.00	0.00	0.00	4.56	5.98	3.39	0.01	0.00	0.00	0.00
16	0.00	0.00	0.00	0.00	0.00	0.63	9.63	3.44	0.00	0.00	0.00	0.00
17	0.00	0.00	0.00	0.00	0.00	0.07	9.60	4.07	0.00	0.00	0.00	0.00
18	0.00	0.00	0.00	0.00	0.00	0.26	9.22	3.83	0.00	0.00	0.00	0.00
19	0.00	0.00	0.00	0.67	0.00	4.87	9.36	3.70	0.00	0.00	0.00	0.00
20	3.97	0.00	0.00	0.80	0.00	3.83	7.47	3.53	0.00	0.00	0.00	0.00
21	8.01	0.00	0.00	0.63	0.00	1.60	11.48	3.63	0.00	0.00	0.00	0.00
22	0.00	0.00	0.00	4.62	1.11	0.88	21.46	3.49	0.00	0.00	0.00	0.00
23	0.00	0.00	0.00	0.46	1.44	3.72	25.05	3.55	0.00	0.00	0.00	0.00
24	0.00	0.00	0.00	0.00	0.00	3.35	22.61	21.33	0.00	0.00	0.00	0.00
25	0.00	0.00	0.00	0.00	0.00	1.99	19.40	59.98	0.39	0.00	0.00	0.00
26	0.00	0.00	0.00	0.00	0.00	3.17	26.45	70.03	0.00	0.00	0.00	0.00
27	0.00	0.00	0.00	0.00	0.00	2.59	33.53	56.44	0.00	0.00	0.00	0.00
28	0.22	0.00	0.00	0.15	0.00	2.25	37.32	56.11	0.20	0.00	0.00	0.00
29	0.00	0.00	0.00	0.24	-----	2.12	39.77	53.67	0.16	0.00	0.00	0.00
30	0.00	0.00	0.00	0.00	-----	1.68	38.73	57.24	0.00	0.00	0.00	0.00
31	0.00	-----	0.00	0.00	-----	3.39	-----	41.95	-----	0.00	0.00	-----
Total	14.46	0.00	0.00	7.58	4.44	53.09	385.78	728.82	34.71	15.02	0.00	0.00
Mean	0.47	0.00	0.00	0.24	0.16	1.71	12.86	23.51	1.16	0.48	0.00	0.00
Max	8.01	0.00	0.00	4.62	1.47	4.87	39.77	70.03	15.90	15.01	0.00	0.00
Min	0.000	0.000	0.000	0.000	0.000	0.000	2.778	3.388	0.000	0.000	0.000	0.000
Ac-Ft	28.68	0.00	0.00	15.04	8.81	105.30	765.17	1445.59	68.85	29.79	0.00	0.00
WTR YEAR 2010	TOTAL	1243.90	MEAN	3.41	MAX	70.03	MIN	0.000	AC-FT	2467.24		

Note: Grey shading indicates incomplete data