

NOTES

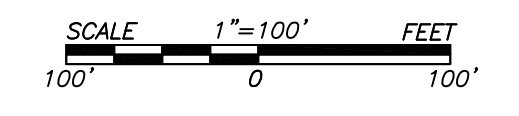
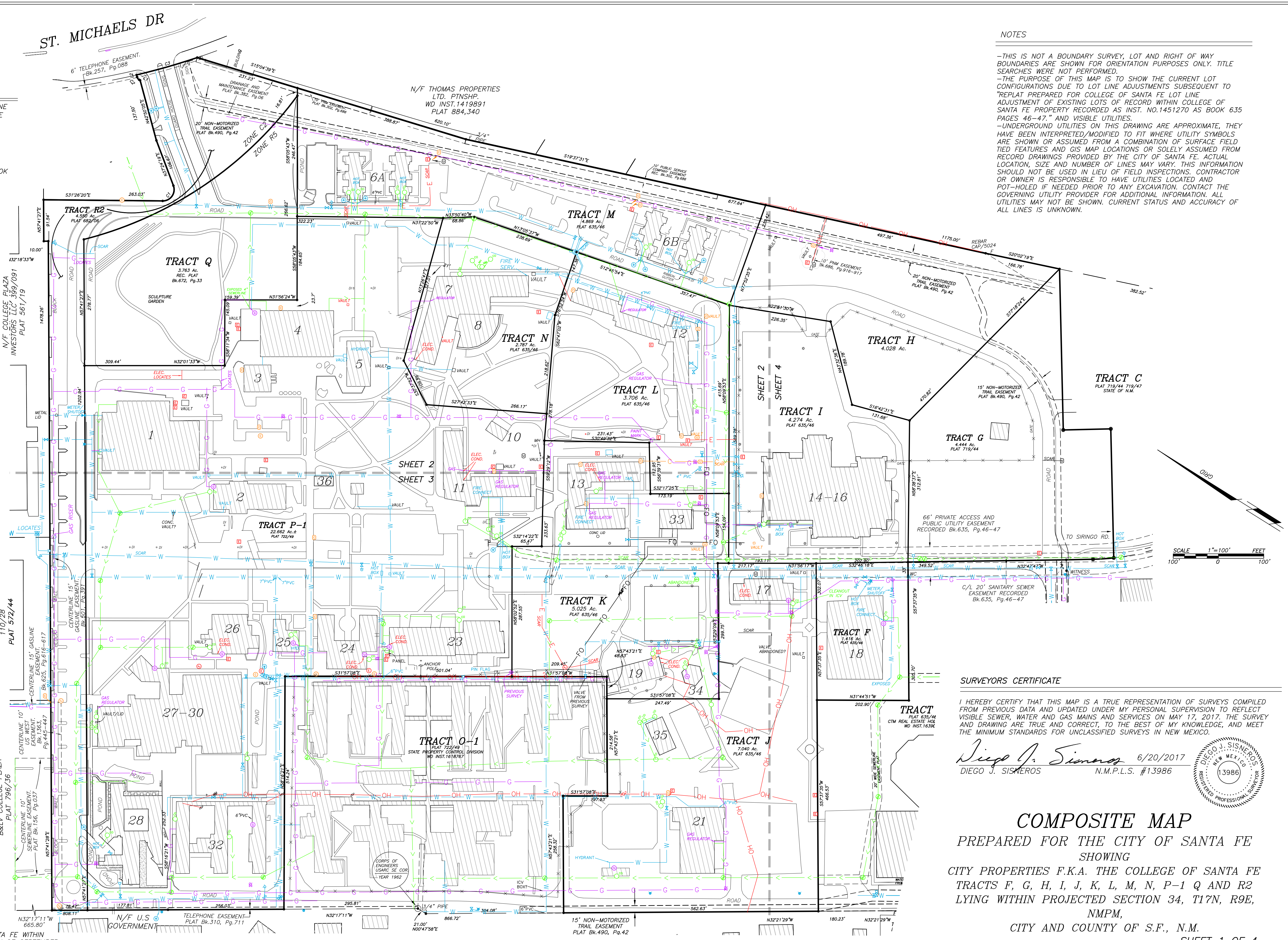
-THIS IS NOT A BOUNDARY SURVEY, LOT AND RIGHT OF WAY BOUNDARIES ARE SHOWN FOR ORIENTATION PURPOSES ONLY. TITLE SEARCHES WERE NOT PERFORMED.  
 -THE PURPOSE OF THIS MAP IS TO SHOW THE CURRENT LOT CONFIGURATIONS DUE TO LOT LINE ADJUSTMENTS SUBSEQUENT TO "REPLAT PREPARED FOR COLLEGE OF SANTA FE LOT LINE ADJUSTMENT OF EXISTING LOTS OF RECORD WITHIN COLLEGE OF SANTA FE PROPERTY RECORDED AS INST. NO.1451270 AS BOOK 635 PAGES 46-47." AND VISIBLE UTILITIES.  
 -UNDERGROUND UTILITIES ON THIS DRAWING ARE APPROXIMATE, THEY HAVE BEEN INTERPRETED/MODIFIED TO FIT WHERE UTILITY SYMBOLS ARE SHOWN OR ASSUMED FROM A COMBINATION OF SURFACE FIELD TIED FEATURES AND GIS MAP LOCATIONS OR SOLELY ASSUMED FROM RECORD DRAWINGS PROVIDED BY THE CITY OF SANTA FE. ACTUAL LOCATION, SIZE AND NUMBER OF LINES MAY VARY. THIS INFORMATION SHOULD NOT BE USED IN LIEU OF FIELD INSPECTIONS. CONTRACTOR OR OWNER IS RESPONSIBLE TO HAVE UTILITIES LOCATED AND POT-HOLED IF NEEDED PRIOR TO ANY EXCAVATION. CONTACT THE GOVERNING UTILITY PROVIDER FOR ADDITIONAL INFORMATION. ALL UTILITIES MAY NOT BE SHOWN. CURRENT STATUS AND ACCURACY OF ALL LINES IS UNKNOWN.

CONTROL REFERENCE AND LEGEND

-BEARINGS ARE GRID, REFERRED TO THE NEW MEXICO STATE PLANE COORDINATE SYSTEM NAD83(1992), CENTRAL ZONE. DISTANCES ARE REFERRED TO 6800' AMSL. TO CONVERT DISTANCES TO NMSPC, MULTIPLY BY 0.999583883.  
 ELEVATIONS ARE NAVD88(1992).  
 -ALL REFERENCE TO NAD83(1992) AND NAVD88(1992) DERIVED FROM DAWSON2 GPS BASE STATION N=1,687,626.870 E=1,708,833.475 ELE=6572.376', ESTABLISHED FROM SANTA FE COUNTY CONTROL STATIONS USING DATA FROM THE 1992 BLUEBOOK REPORT FOR NGS AND S.F. CO..

- FOUND DAWSON SURVEYS MONUMENT OR AS SHOWN
- S.A.S. SEWER MANHOLE
- S.A.S. CLEANOUT
- UTILITY METER, VALVE, PEDESTAL/BOX/CONDUIT, ETC.
- COMMUNICATION MANHOLE
- COMMUNICATION/CTV BOX OR VAULT
- ELECTRIC UTILITY BOX
- UTILITY POLE
- ELECTRIC MANHOLE
- WATER METER
- WATER VALVE
- FIRE HYDRANT
- FIRE HYDRANT, ABANDONED/INACTIVE
- GAS REGULATOR
- GAS VALVE
- GAS LINE
- OVERHEAD UTILITY LINE
- FO COMMUNICATIONS LINE, PREVIOUS SURVEY
- WATER LINE
- CHAINLINK FENCE
- SEWER LINE
- LIGHT POLE FROM PREVIOUS SURVEYS, NOT UPDATED
- DI DROP INLET
- ICV IRRIGATION CONTROL VALVE

BUILDING NUMBER	NAME
1	GREER GARSON THEATRE
2	ADMINISTRATION BUILDING
3	FORUM
4	FOGELSON LIBRARY
5	SOUTHWEST ANNEX
6A	STUDENT APARTMENTS
6B	STUDENT APARTMENTS
7	ST. MICHAEL'S HALL
8	CAFETERIA(ST. MICHAELS HALL)
10	BANDSHELL
11	LASALLE HALL
12	KING HALL
13	KENNEDY HALL
14-16	GARSON STUDIO COMPLEX
17	ONATE HALL
18	DRISCOLL FITNESS CENTER
19	ALEXIS HALL
21	ALUMNI HALL
23	BENILDIUS HALL
24	MOUTON HALL
25	STUDENT HEALTH SERVICES
26	LUKE HALL
27-30	VISUAL ARTS CENTER
32	ART STUDIOS
33	STORAGE(WAS THE DEN)
34	SECURITY OFFICE
35	MAINTENANCE BUILDING
36	COMMUNICATION BUNKER(POP)



SURVEYORS CERTIFICATE

I HEREBY CERTIFY THAT THIS MAP IS A TRUE REPRESENTATION OF SURVEYS COMPILED FROM PREVIOUS DATA AND UPDATED UNDER MY PERSONAL SUPERVISION TO REFLECT VISIBLE SEWER, WATER AND GAS MAINS AND SERVICES ON MAY 17, 2017. THE SURVEY AND DRAWING ARE TRUE AND CORRECT, TO THE BEST OF MY KNOWLEDGE, AND MEET THE MINIMUM STANDARDS FOR UNCLASSIFIED SURVEYS IN NEW MEXICO.

*Diego J. Siskeros* 6/20/2017  
 DIEGO J. SISKEROS N.M.P.L.S. #13986



**COMPOSITE MAP**  
 PREPARED FOR THE CITY OF SANTA FE  
 SHOWING  
 CITY PROPERTIES F.K.A. THE COLLEGE OF SANTA FE  
 TRACTS F, G, H, I, J, K, L, M, N, P-1 Q AND R2  
 LYING WITHIN PROJECTED SECTION 34, T17N, R9E,  
 NMMP,  
 CITY AND COUNTY OF S.F., N.M.

SHEET 1 OF 4

REFERENCE DOCUMENTS  
 BOUNDARY SURVEY PLAT PREPARED FOR THE COLLEGE OF SANTA FE WITHIN COLLEGE OF SANTA FE PROPERTY RECORDED ON THE 14TH DAY OF SEPTEMBER, 2009 AS INSTRUMENT NO.1577073 IN PLAT BOOK 707 PAGE 50.

ALL OTHER REFERENCE DOCUMENTS AS SHOWN ON THIS OR SUBSEQUENT SHEETS. SEE RECORDED PLATS AND DOCUMENTS FOR ADDITIONAL INFORMATION AFFECTING THESE TRACTS.

SEE SHEET 2 OF 2 FOR CONTINUATION AT 1"=100'

DAWSON SURVEYS INC.  
 PROFESSIONAL LAND SURVEYORS  
 2502 B CAMINO ENTRADA  
 SANTA FE, N.M., 87507  
 FILE#CS10014COMP DATE:6/20/2017