



Agenda

Long Range Planning Sub-Committee (LRPC)

Wednesday, June 29, 2016
11:00 a.m. to 1:00 p.m.
Round House Meeting Room
City of Santa Fe Rail District Offices
500 Market St., Suite 200

- 1. CALL TO ORDER**
- 2. MEMBERS IN ATTENDANCE**
- 3. APPROVAL OF AGENDA**
- 4. APPROVAL OF MINUTES: June 1, 2016 meeting**
- 5. DISCUSSION ITEMS:**
 - 1. Demographics Presentation – Staff**
- 6. MATTERS FROM THE STAFF**
- 7. MATTERS FROM THE COMMITTEE**
- 8. MATTERS FROM THE PUBLIC**
- 9. NEXT MEETING DATE: Wednesday, August 3, 2016**
- 10. ADJOURN**

An interpreter for the hearing impaired is available through the City Clerk's Office (955-6521) upon 5 days notice. For questions regarding this agenda, please contact the Long Range Planning Division at 955-6609.

Long Range Planning Sub-committee meeting notes from June 1, 2016

Members in attendance: Kim Shanahan (Chair), Justin Greene, Vince Kadlubek, Piper Kapin, Michael Maremont

Members Absent: None

Staff in Attendance: Reed Liming, Richard Macpherson, Lisa Martinez, Greg Smith

The meeting was called to order by the Chair at approximately 11:05 a.m. and all LRPC members were present.

April 27th LRPC notes were approved, Vince made a motion to approve and Piper seconded the motion.

City Of Santa Fe General Plan 1999: Overview and Analysis (Discussion)

Reed presented the information in the packet regarding the General Plan and some of the background on how long the plan took and the cost of the General Plan (5 years and \$500,000).

Reed spoke about the pros and cons of the 1999 general plan. (N.M. legislation is fairly open to what a general plan has to cover.)

Reed gave a background on the 1999 plan.

There seems to be a growing interest in the general plan updating.

Reed spoke about the successes and struggles of achieving the general plan themes.

Many departments have their own plans now; not as useful and even confusing to try and include every other depts. plans.

Piper asked what are we trying to solve?

What has changed since the '99 General Plan?

What are the future issues we need to prepare for?

What themes are the most pertinent and can we prioritize the themes?

Discussion about who the plan is for, the intended audience, etc.

Cost of updating general plans in other cities.

Do we want to continue using a future land use map?

Piper asked what the role of the L.R.P.C. can be in the updating process.

Michael asked who will use this document.

Justin mentioned how divisions like economic development and housing fit into a general plan update.

Kim said who and how do we do an update, is it done by staff or a consultant.

Lisa said City Council wants to do some strategic planning. She said a big plan update would require a consultant probably.

Lisa spoke about the Gerhardt apartments and traffic issues in that project.

Kim said city council has not given any clear direction on general plan up-dating in the last four years, at least.

Lisa said it would be good for Long Range Planning and Land Use to do some strategic planning.

Kim said the Council seeks advice and would welcome our advice.

Lisa spoke about what strategic planning can do.

Vince said what's the role of the committee, and are we working toward a recommendation.

Vince said he likes strategic planning and focusing on fewer topics, can present updates to Council from Long Range Planning.

Piper said different dept.'s seem to be operating separately from each other.

Vince said strategic planning and the General Plan update can be done at the same time.

Kim said using sub-contractors may be necessary in updating the general plan.

Reed said a budget could be set for updating using a consultant.

Justin spoke about how an update process might work.

Kim said the development community likes the Future Land Use Map.

Vince asked what the role of the committee is and the end result.

Vince said develop a report, get citizens involved, we need to decide direction we're moving in.

Lisa spoke about the study session on the general plan in July.

Study session will primarily be on the West Santa Fe River Corridor plan.

Piper spoke about the over-arching issue of what the process is for up-dating.

Piper spoke about getting a Councilor interested in the update process.

Justin spoke about a general plan updating & how phases might work

Michael said start with the update that Reed and Richard have created.

Piper said it would be nice to have a check list for planning commission cases.

Kim suggested the LRPC look at the themes and decide which ones to emphasize in an update.

Reed asked Greg how he has used the General Plan and how he views it in relation to Chapter 14.

Greg said 90% of what he has done is to review Planning Commission cases and issues in regards to the General Plan.

Greg said he also uses the Future Land Use Map to check cases and applications.

Greg liked the list of pros and cons that Long Range staff produced & said water is not as much of a priority as in years past and sustainability issues have become a bigger topic.

Michael said he likes having the Future Land Use Map in the update Reed and Richard produced.

Piper said as a land use sub-committee the most productive thing we can do is focus on land use issues.

Reed said many dept.'s have developed their own plans for their departments & divisions.

Piper said the multitude of dept. plans may be problematic.

Richard said emphasize land use planning in an update.

Lisa spoke about general plan updates in other cities.

Justin mentioned that other dept.'s staff can present to the LRPC.

Reed said other dept. issues have been summarized in the current up-date.

Reed said a big document is not necessarily better or more helpful.

Justin asked about the capacity of Long Range staff.

Kim talked about the changed demographics in Santa Fe.

Reed mentioned that Santa Fe's population was getting older.

Lisa spoke about the aging population and the healthcare industry.

Kim talked about the millennials and their college debts.

Piper spoke about the millennials and factors why they aren't coming to Santa Fe & that the boomers need the millennials.

Reed felt that some millennials will find their way to Santa Fe the same way baby-boomers came to Santa Fe from other places (not sure when, how many and at what pace).

Piper asked if staff can provide a work plan for the subcommittee to help with.

Kim spoke about the need for affordable housing and a place for more attention.

Justin spoke about assessing the 14 themes.

Meeting notes: _____ Richard Macpherson

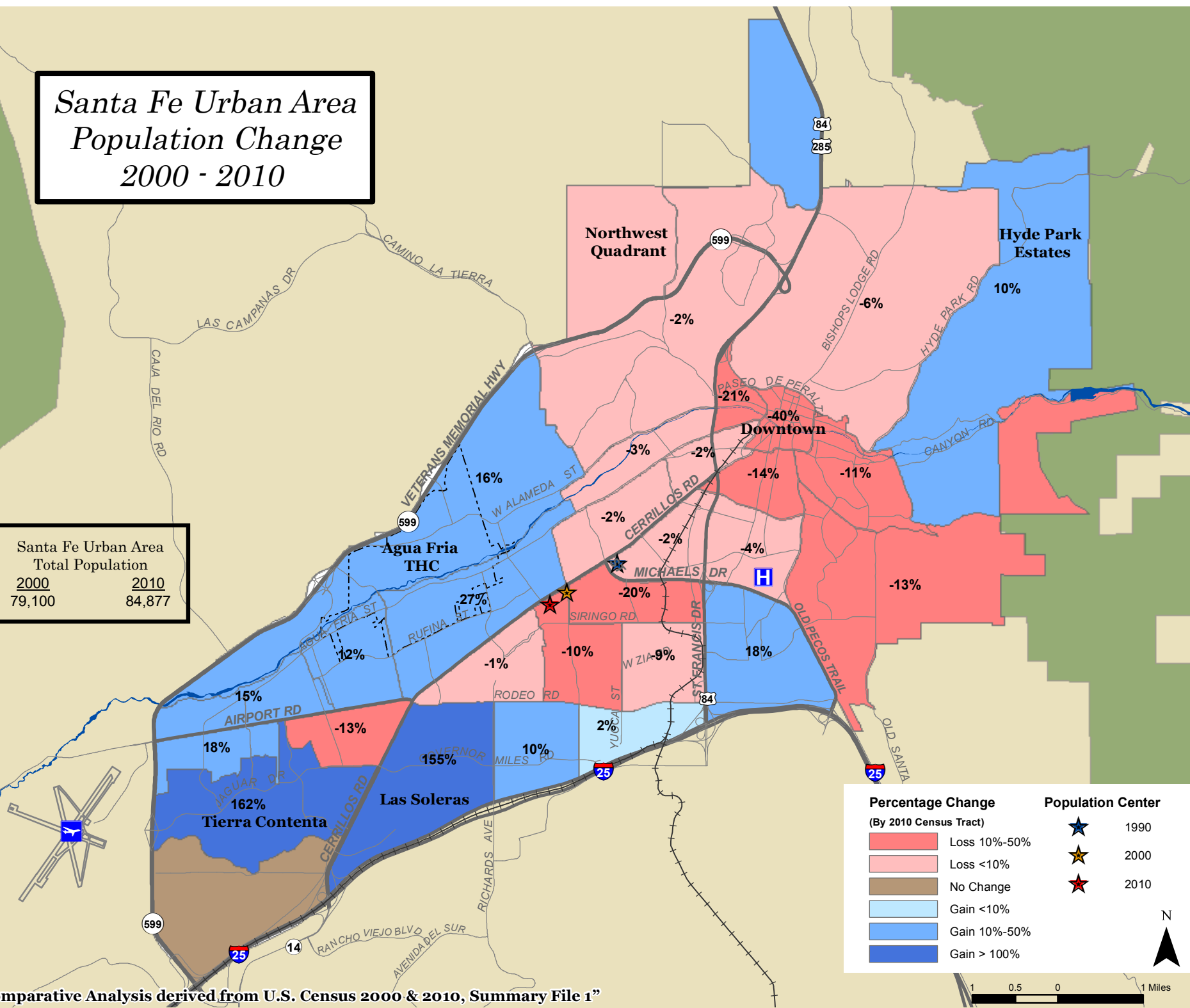
Date: _____

Approved by: _____ Kim Shanahan, Chair

Date: _____

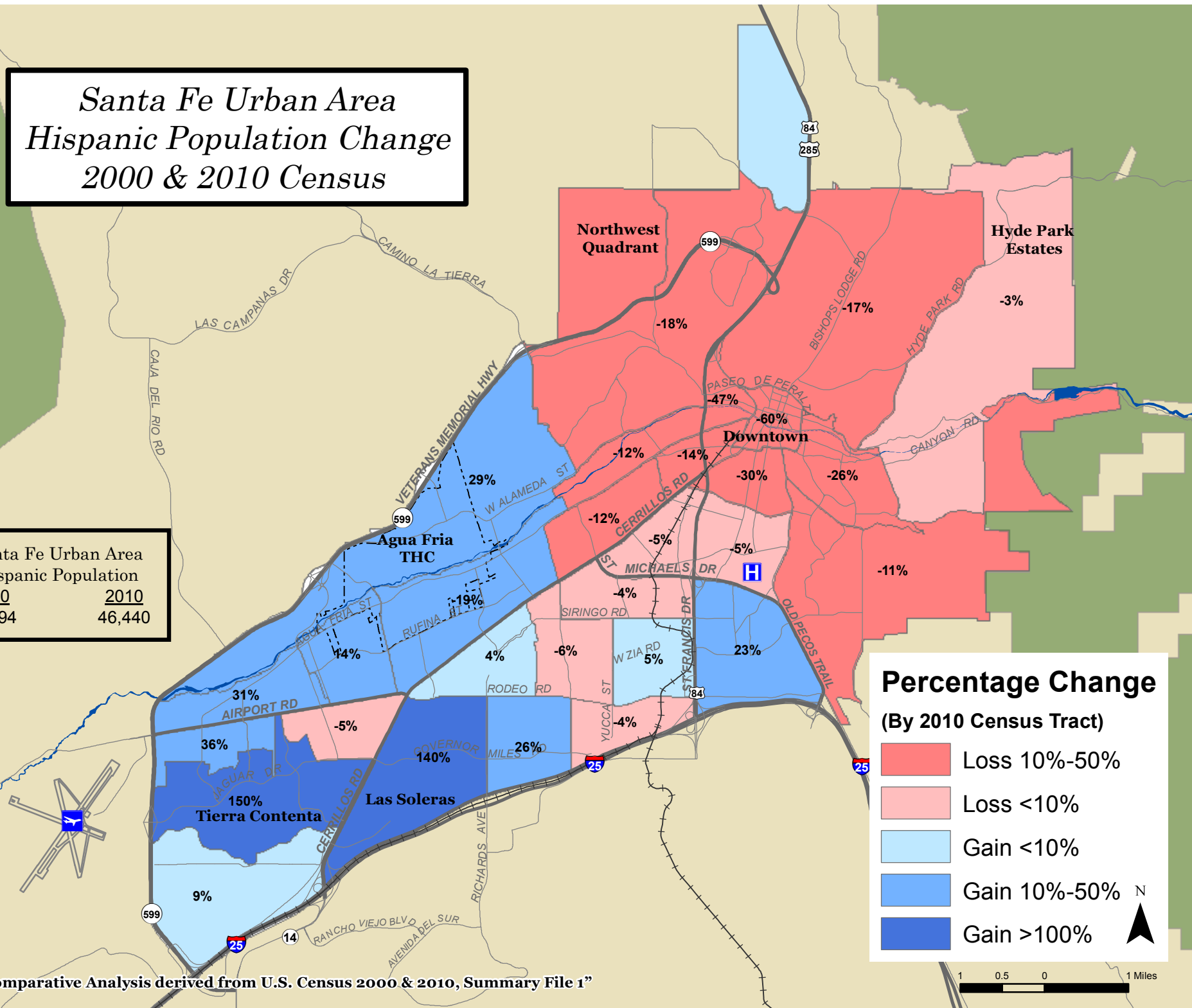
Santa Fe Urban Area Population Change 2000 - 2010

Santa Fe Urban Area
Total Population
2000 2010
79,100 84,877



Santa Fe Urban Area Hispanic Population Change 2000 & 2010 Census

Santa Fe Urban Area Hispanic Population	
2000	2010
41,794	46,440



"Source: Comparative Analysis derived from U.S. Census 2000 & 2010, Summary File 1"

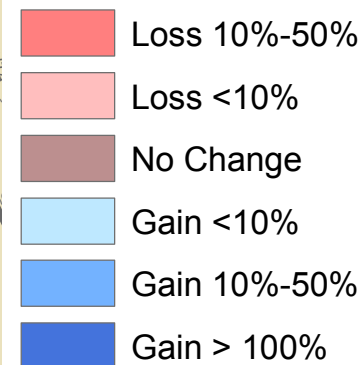
Santa Fe Urban Area Child Population Change 2000 & 2010 Census

Santa Fe Urban Area
Child Population

2000	2010
17,967	17,785

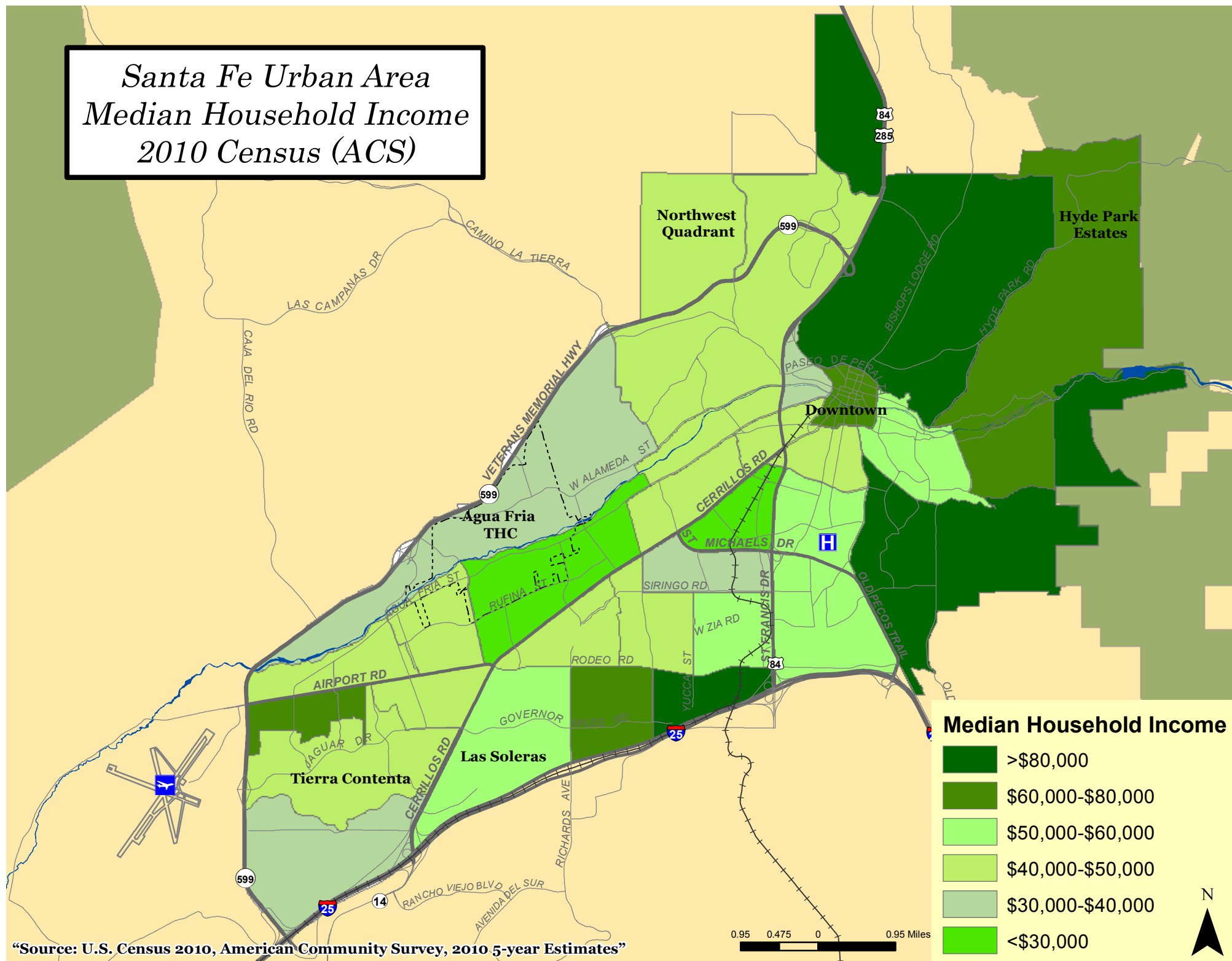
Percentage Change

(By 2010 Census Tract)



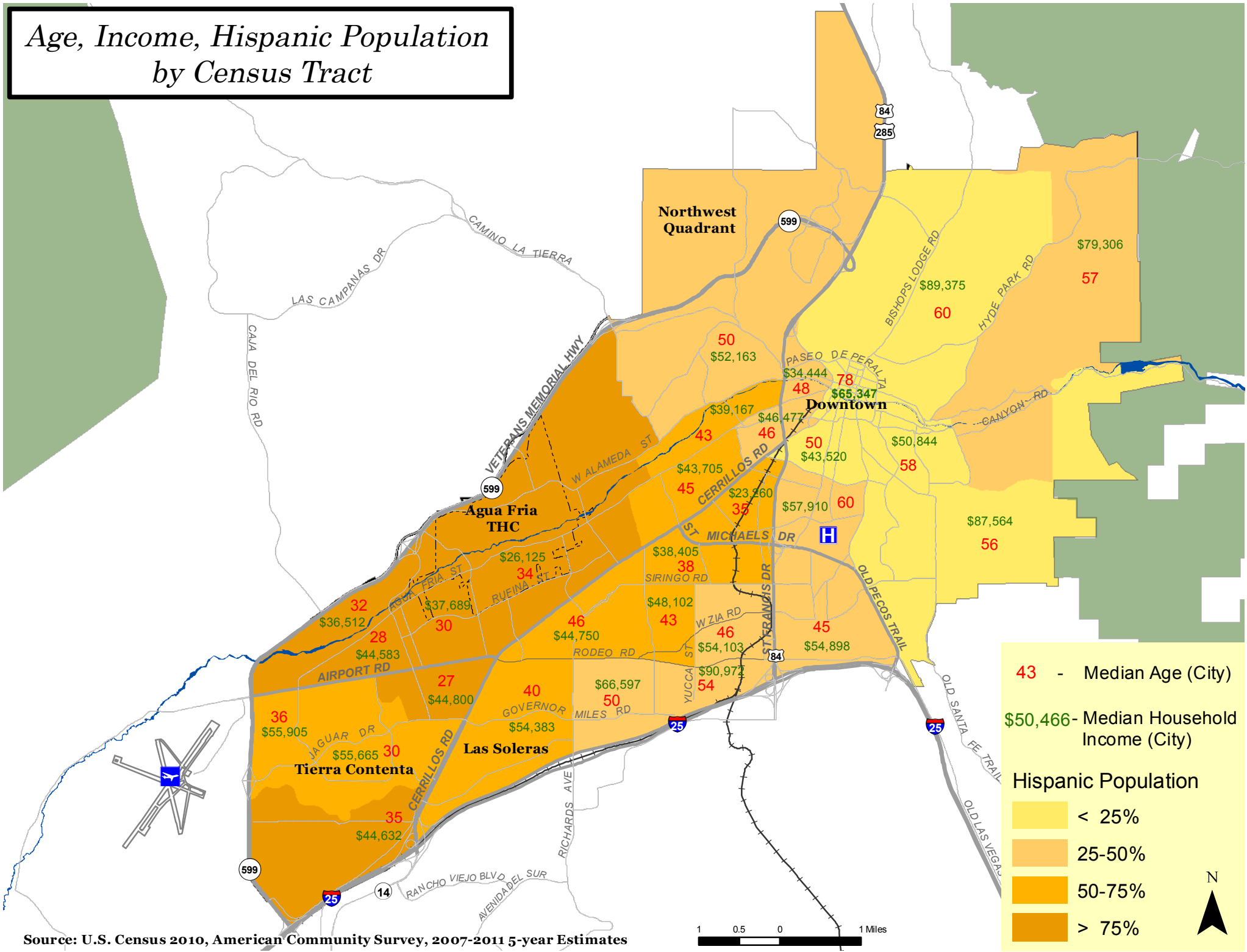
"Source: Comparative Analysis derived from U.S. Census 2000 & 2010, Summary File 1"

Santa Fe Urban Area Median Household Income 2010 Census (ACS)



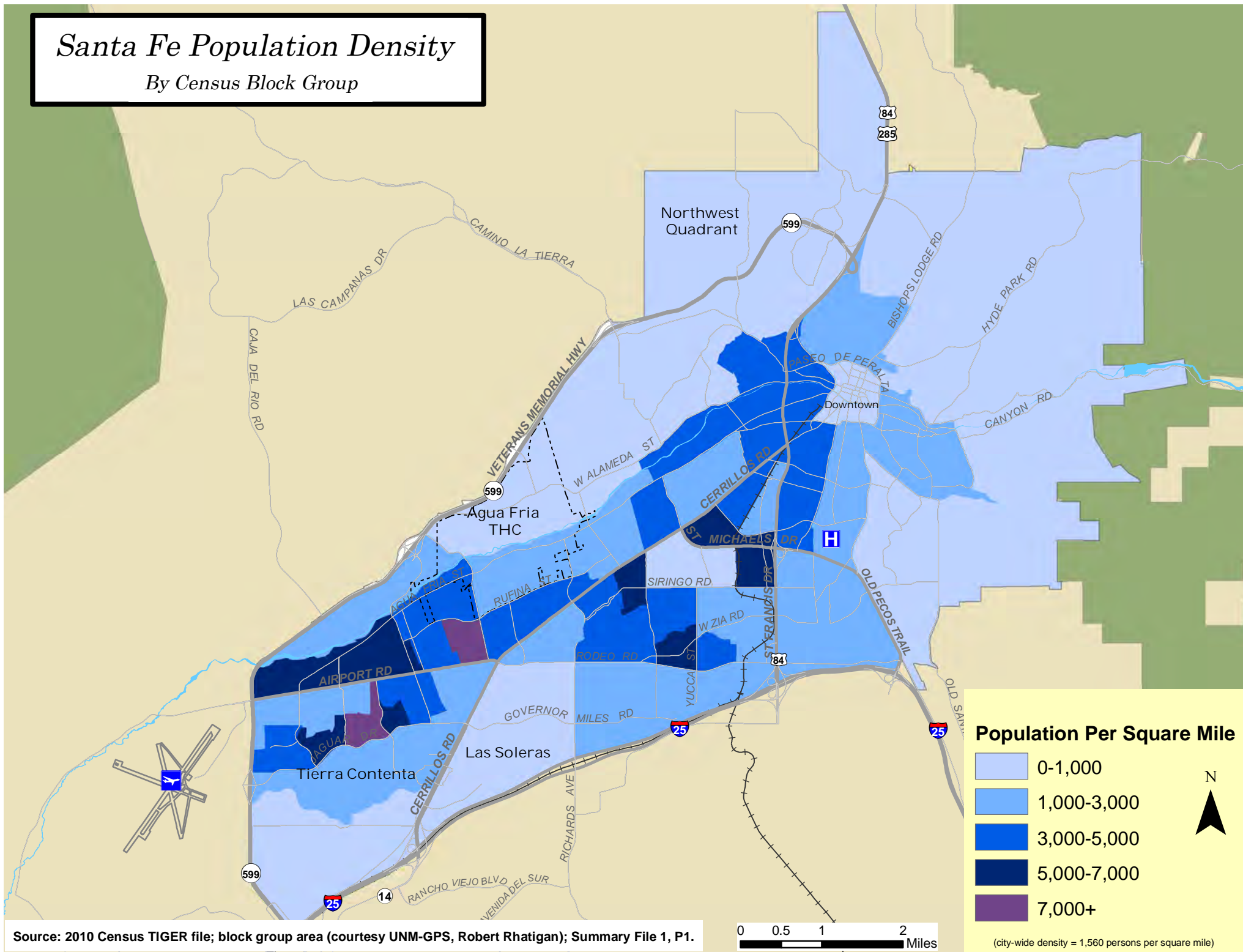
“Source: U.S. Census 2010, American Community Survey, 2010 5-year Estimates”

Age, Income, Hispanic Population by Census Tract



Santa Fe Population Density

By Census Block Group



Legend



Geographic Center

Population Center



1990



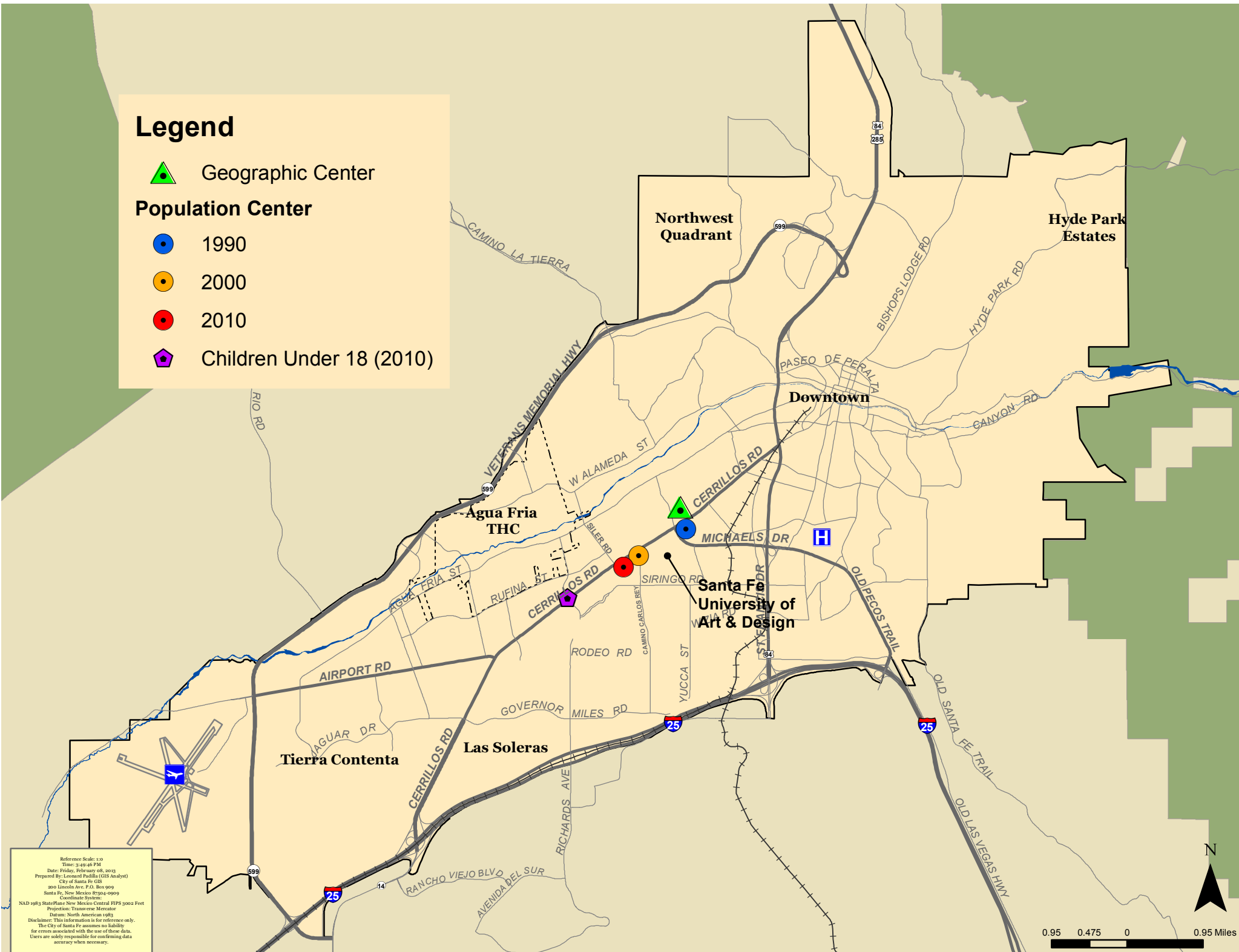
2000



2010



Children Under 18 (2010)



Reference Scale: 1:0
Time: 1:49:48 PM
Date: Friday, February 08, 2013
Prepared By: Leonard Padilla (GIS Analyst)
City of Santa Fe GIS
300 Lincoln Ave. P.O. Box 909
Santa Fe, New Mexico 87504-0909
Coordinate System:
NAD 1983 StatePlane New Mexico Central FIPS 3002 Feet
Projection: Transverse Mercator
Datum: North American 1983
Disclaimer: This information is for reference only.
The City of Santa Fe assumes no liability
for errors associated with the use of these data.
Users are solely responsible for confirming data
accuracy when necessary.

**Santa Fe Urban Area
Senior Population (Age 65+)
2010 (Census)**

Legend:

- 50% or more
- 25%-49%
- 10%-24%
- Less than 10%

Source: U.S. Census 2010; Summary File 1, File QT-P1.

**Santa Fe Urban Area
Senior Population (Age 65+)
2020 (Projected)**

Legend:

- 50% or more
- 25%-49%
- 10%-24%

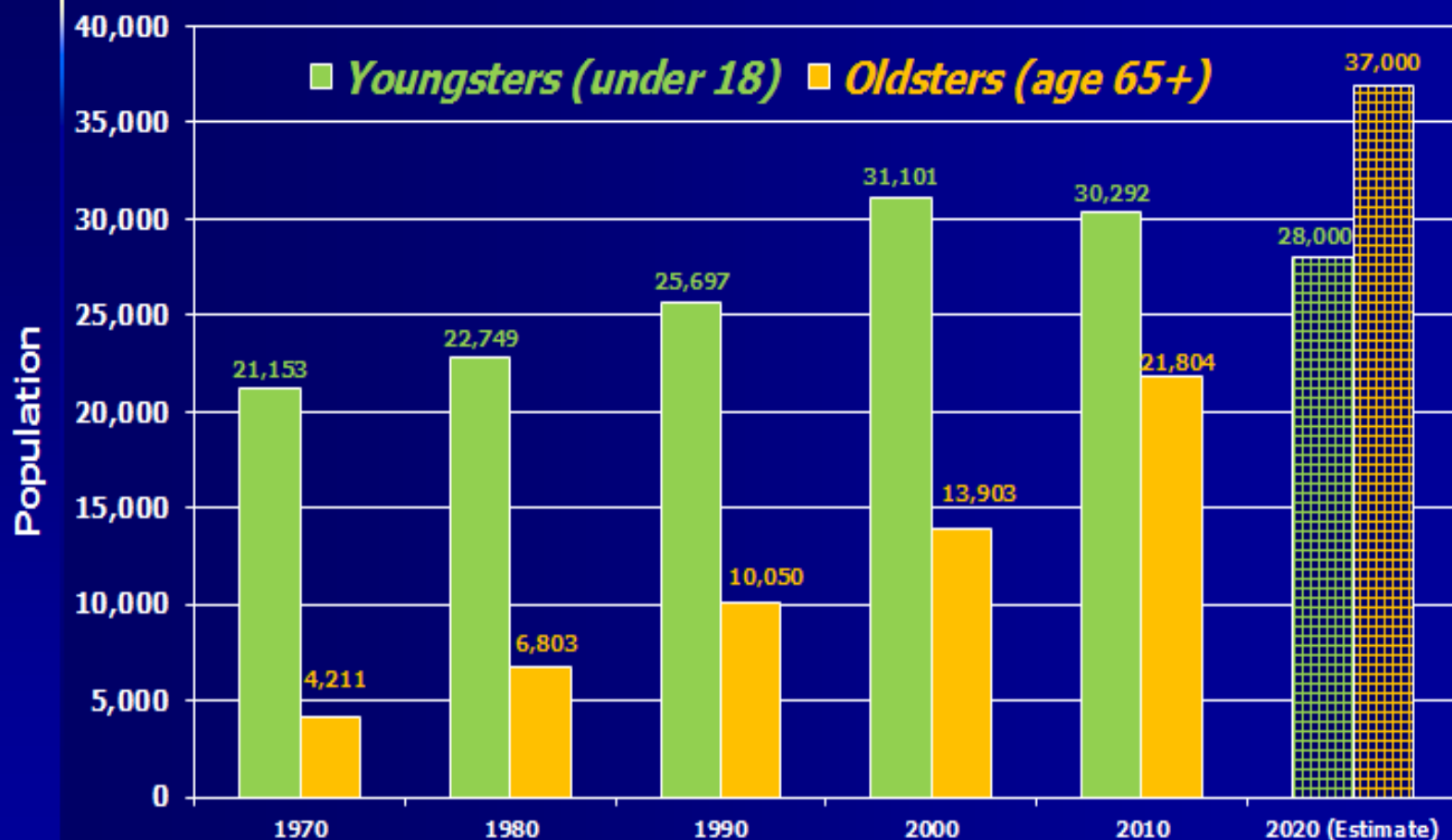
Source: U.S. Census 2010; Summary File 1, File QT-P1. Extrapolation to 2020 by city staff

Youngsters & Oldsters

Age-Group Population in Santa Fe County

1970-2010 Source: University of New Mexico, Bureau of Business & Economic Research

2020 Estimate Source: Reed Liming, Long Range Planner, City of Santa Fe

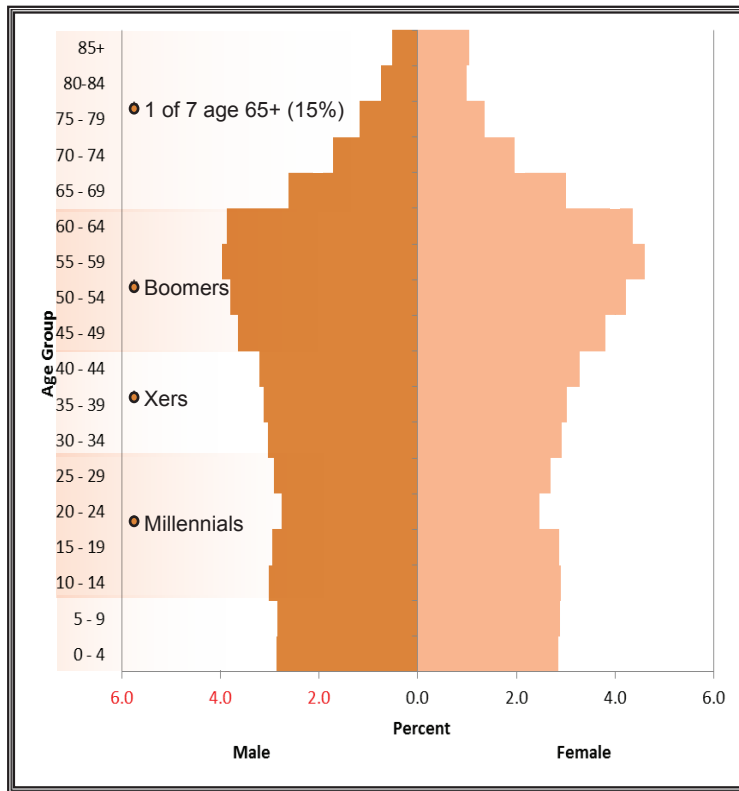


Santa Fe County Population by Age Group

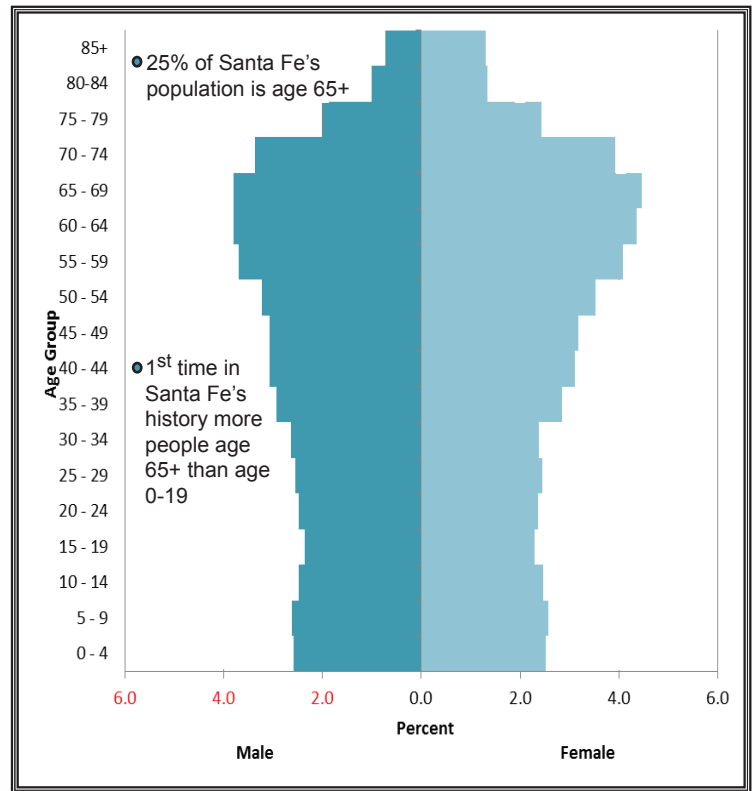


Source: University of New Mexico: Bureau of Business & Economic Research. Geospatial & Population Studies (GPS)

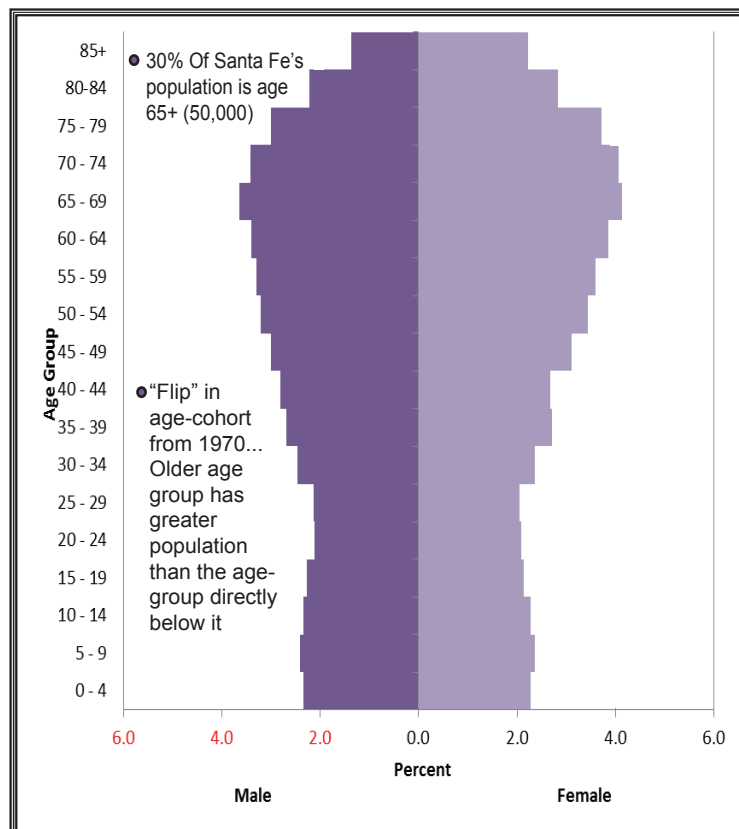
Santa Fe County Population Pyramid 2010



Santa Fe County Population Pyramid 2020



Santa Fe County Population Pyramid 2030

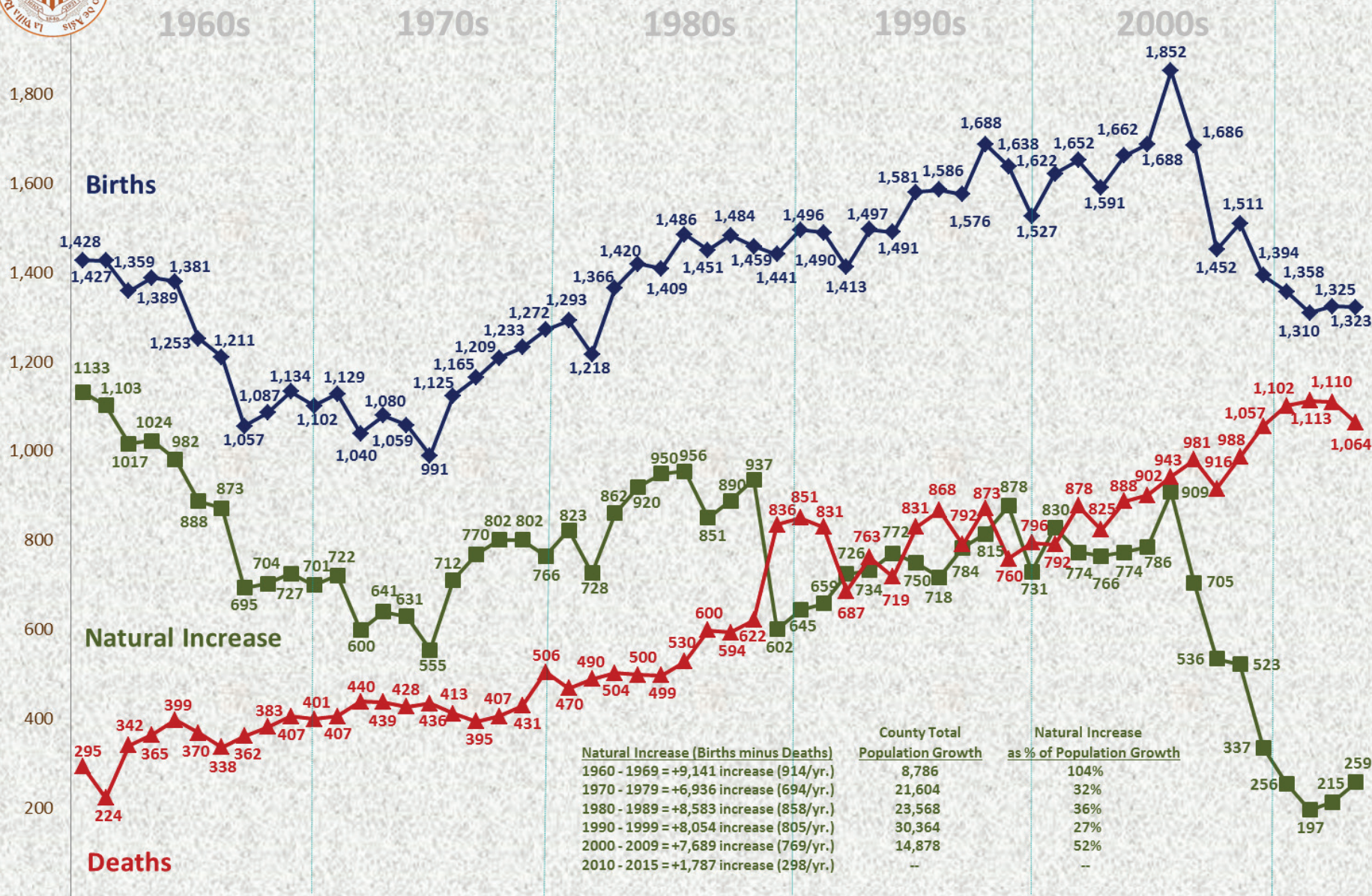


Santa Fe County Population Pyramid 2040





Santa Fe County Natural Increase



1960 61 62 63 64 65 66 67 68 69 70 71 72 73 74 75 76 77 78 79 80 81 82 83 84 85 86 87 88 89 90 91 92 93 94 95 96 97 98 99 00 01 02 03 04 05 06 07 08 09 10 11 12 13 14 15

Source: New Mexico Department of Health, "New Mexico Indicator Based Information System" (NM-IBIS); U.S. Decennial Census

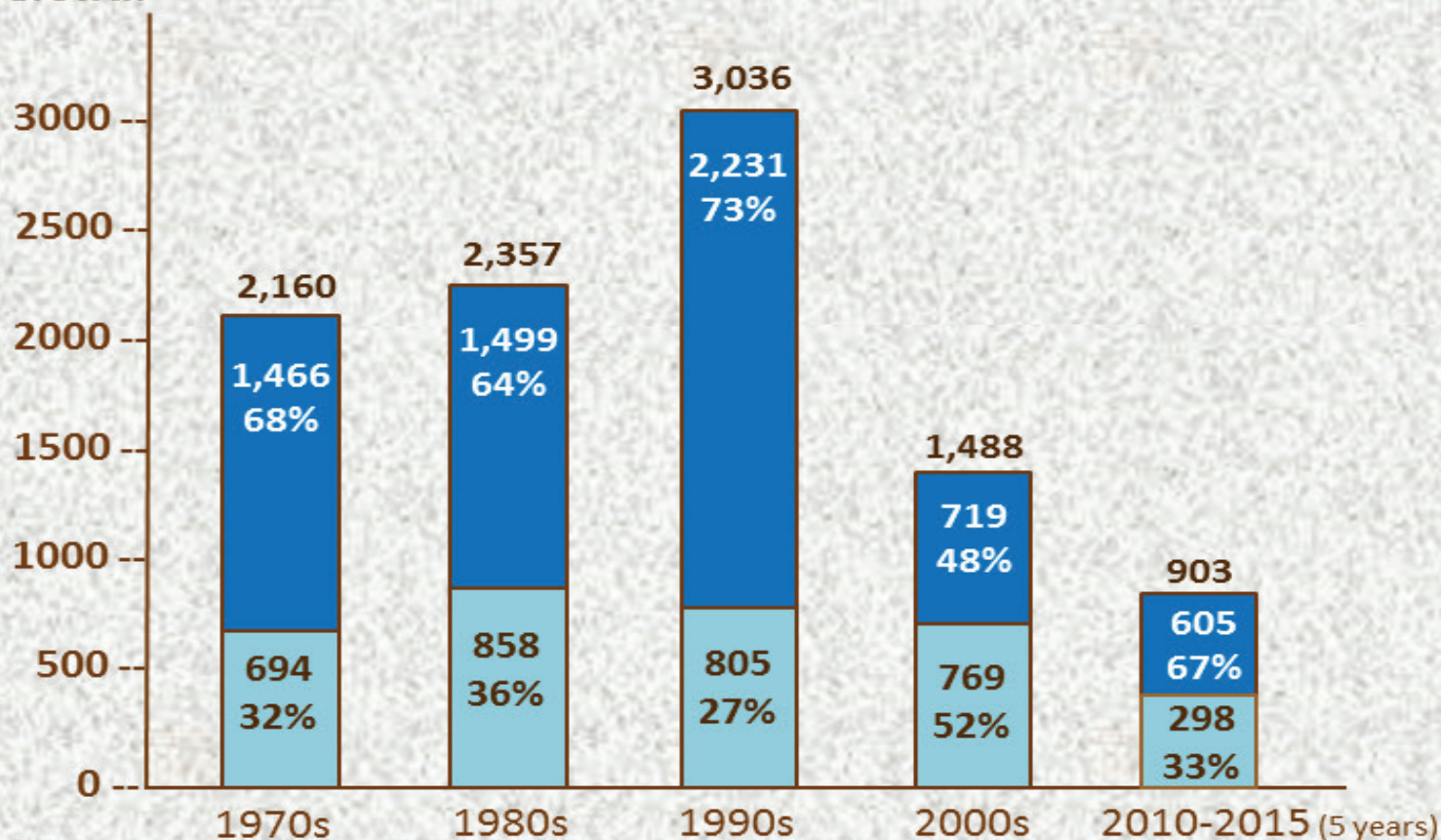
Santa Fe County Population Growth by Decade and Component



(includes City of S.F.)

Source: U.S. Census; NM Department of Health

Average
Annual
Population
Growth



External growth (i.e. "net migration"; Population entering minus Pop. leaving S.F. County)

Internal growth (i.e. "natural increase"; Births minus Deaths in S.F. County)