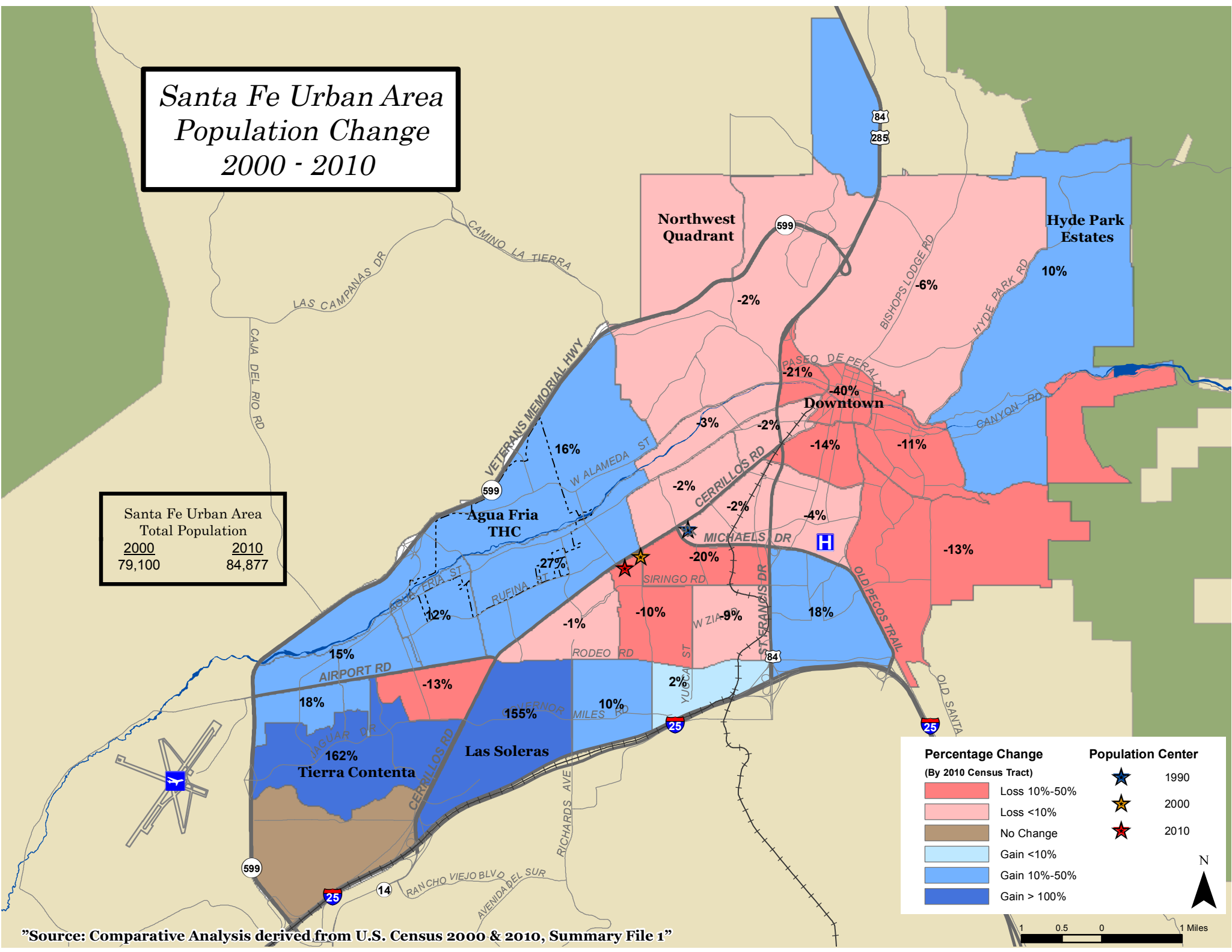


Santa Fe Urban Area Population Change 2000 - 2010

Santa Fe Urban Area Total Population	
2000	2010
79,100	84,877



Percentage Change (By 2010 Census Tract)		Population Center	
	Loss 10%-50%	★	1990
	Loss <10%	★	2000
	No Change	★	2010
	Gain <10%		
	Gain 10%-50%		
	Gain > 100%		

”Source: Comparative Analysis derived from U.S. Census 2000 & 2010, Summary File 1”

