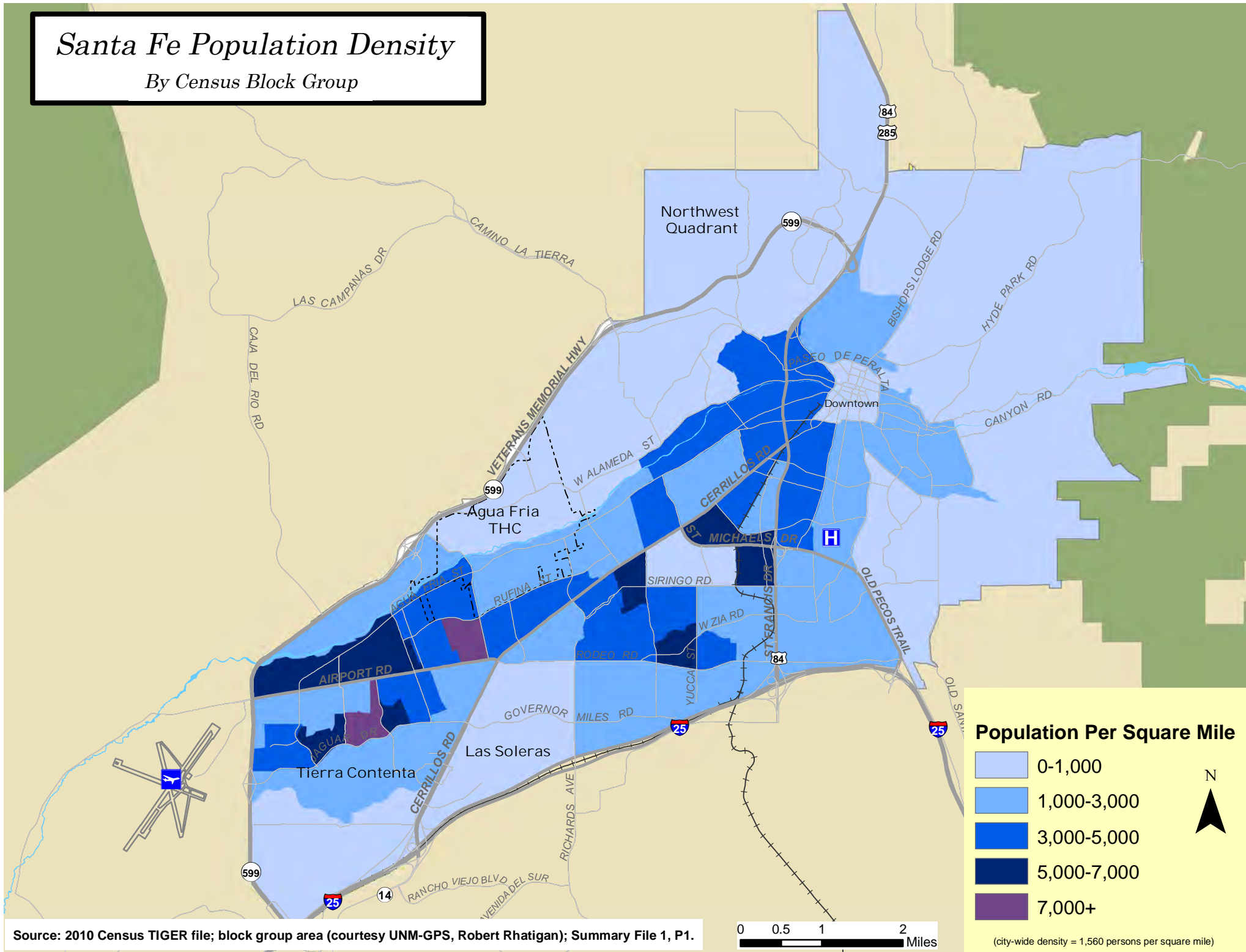


Santa Fe Population Density

By Census Block Group



Source: 2010 Census TIGER file; block group area (courtesy UNM-GPS, Robert Rhatigan); Summary File 1, P1.

0 0.5 1 2 Miles

Population Per Square Mile

- 0-1,000
- 1,000-3,000
- 3,000-5,000
- 5,000-7,000
- 7,000+

(city-wide density = 1,560 persons per square mile)