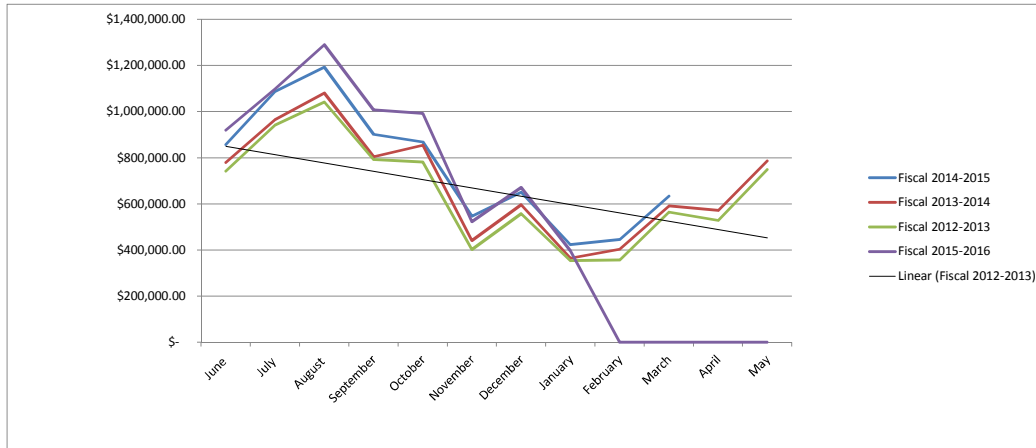


**LODGERS TAX REPORTED**

	June	July	August	September	October	November	December	January	February	March	April	May	TOTAL
<b>Fiscal 2015-2016</b>													
HOTEL MOTEL TOTALS	##### \$	1,035,125.16	#####	\$ 953,641.28	\$ 936,696.14	\$ 488,396.06	\$ 617,368.70	\$ 373,702.71	\$ -	\$ -	\$ -	\$ -	6,502,891.70
SHORT TERM TOTALS	\$ 45,582.92	64,336.16	\$ 67,012.36	\$ 54,126.16	\$ 55,148.75	\$ 34,994.81	\$ 53,631.75	\$ 23,057.49	\$ -	\$ -	\$ -	\$ -	\$ 397,890.40
<b>COMBINED Monthly TOTAL</b>	<b>\$919,757.79</b>	<b>\$ 1,099,461.32</b>	<b>\$1,290,799.14</b>	<b>\$1,007,767.44</b>	<b>\$ 991,844.89</b>	<b>\$ 523,390.87</b>	<b>\$ 671,000.45</b>	<b>\$ 396,760.20</b>	<b>\$ -</b>	<b>\$ -</b>	<b>\$ -</b>	<b>\$ -</b>	<b>\$6,900,782.10</b>
Year to Date TOTALS	\$919,757.79	2,019,219.11	\$3,310,018.25	\$4,317,785.69	\$5,309,630.58	\$5,833,021.45	\$6,504,021.90	\$6,900,782.10	\$ -	\$ -	\$ -	\$ -	
Monthly Gain/Decline previous year	\$ 61,925.56	11,992.86	\$ 97,690.24	\$ 106,040.66	\$ 123,534.37	\$ (23,170.90)	\$ 19,848.71	\$ (27,117.20)	\$ -	\$ -	\$ -	\$ -	
	7.22%	1.10%	8.19%	11.76%	14.23%	-4.24%	3.05%	-6.40%	0.00%	0.00%	0.00%	0.00%	
YTD Gain/Decline over previous year	\$ 61,925.56	73,918.42	\$ 171,608.66	\$ 277,649.32	\$ 401,183.69	\$ 378,012.79	\$ 397,861.50	\$ 370,744.30	\$ -	\$ -	\$ -	\$ -	
	7.22%	3.80%	5.47%	6.87%	8.17%	6.93%	6.52%	5.68%	0.00%	0.00%	0.00%	0.00%	
<b>Fiscal 2014-2015</b>													
HOTEL MOTEL TOTALS	\$817,848.38	\$ 1,044,642.06	\$ 1,140,493.35	\$ 857,470.01	\$ 814,263.43	\$ 514,194.37	\$ 598,500.41	\$ 404,807.16	\$ 423,923.48	\$ 606,638.51	\$ 606,645.22	\$ 786,985.17	8,616,411.55
SHORT TERM TOTALS	\$ 39,983.85	42,826.40	\$ 52,615.55	\$ 44,256.77	\$ 54,047.09	\$ 32,367.40	\$ 52,651.33	\$ 19,070.24	\$ 21,114.70	\$ 27,942.41	\$ 37,161.53	\$ 41,801.40	\$ 465,838.67
<b>COMBINED Monthly TOTAL</b>	<b>\$857,832.23</b>	<b>\$ 1,087,468.46</b>	<b>\$ 1,193,108.90</b>	<b>\$ 901,726.78</b>	<b>\$ 868,310.52</b>	<b>\$ 546,561.77</b>	<b>\$ 651,151.74</b>	<b>\$ 423,877.40</b>	<b>\$ 445,038.18</b>	<b>\$ 634,580.92</b>	<b>\$ 643,806.75</b>	<b>\$ 828,786.57</b>	<b>\$9,082,250.22</b>
Year to Date TOTALS	\$857,832.23	1,945,300.69	\$3,138,409.59	\$4,040,136.37	\$4,908,446.89	\$5,455,008.66	\$6,106,160.40	\$6,530,037.80	\$6,975,075.98	\$7,609,656.90	\$8,253,463.65		
Monthly Gain/Decline previous year	\$ 77,361.73	120,964.75	\$ 112,097.79	\$ 97,349.06	\$ 13,060.94	\$ 105,597.19	\$ 54,974.70	\$ 59,386.63	\$ 41,372.96	\$ 43,331.03	\$ 71,659.34		
	9.91%	12.52%	10.37%	12.10%	1.53%	23.95%	9.22%	16.29%	10.25%	7.33%	12.52%		
YTD Gain/Decline over previous year	\$ 77,361.73	198,326.48	\$ 310,424.27	\$ 407,773.33	\$ 420,834.27	\$ 526,431.46	\$ 581,406.16	\$ 640,792.79	\$ 682,165.75	\$ 725,496.78	\$ 797,156.12		
	9.91%	11.35%	10.98%	11.23%	9.38%	10.68%	10.52%	10.88%	10.84%	10.54%	10.69%		
<b>Fiscal 2013-2014</b>													
HOTEL MOTEL TOTALS	\$747,023.55	\$ 920,757.76	\$ 1,030,665.11	\$ 763,352.91	\$ 825,488.39	\$ 416,010.05	\$ 551,208.66	\$ 342,218.25	\$ 381,430.60	\$ 558,374.96	\$ 543,393.61	\$ 735,554.89	\$7,815,478.74
SHORT TERM TOTALS	\$ 33,446.95	45,745.95	\$ 50,346.00	\$ 41,024.81	\$ 29,761.19	\$ 24,954.53	\$ 44,968.38	\$ 22,272.52	\$ 22,234.62	\$ 32,874.93	\$ 28,753.80	\$ 50,931.41	\$ 427,315.09
<b>COMBINED Monthly TOTAL</b>	<b>\$780,470.50</b>	<b>\$ 966,503.71</b>	<b>\$ 1,081,011.11</b>	<b>\$ 804,377.72</b>	<b>\$ 855,249.58</b>	<b>\$ 440,964.58</b>	<b>\$ 596,177.04</b>	<b>\$ 364,490.77</b>	<b>\$ 403,665.22</b>	<b>\$ 591,249.89</b>	<b>\$ 572,147.41</b>	<b>\$ 786,486.30</b>	<b>\$8,242,793.83</b>
Year to Date TOTALS	\$780,470.50	1,746,974.21	\$2,827,985.32	\$3,632,363.04	\$4,487,612.62	\$4,928,577.20	\$5,524,754.24	\$5,889,245.01	\$6,292,910.23	\$6,884,160.12	\$7,456,307.53	\$8,242,793.83	
Monthly Gain/Decline previous year	\$ 37,994.95	23,716.94	\$ 38,480.63	\$ 11,776.12	\$ 73,477.99	\$ 37,907.10	\$ 38,191.26	\$ 10,168.80	\$ 47,625.17	\$ 26,653.71	\$ 44,021.16	\$ 37,582.42	
	5.12%	2.52%	3.69%	1.49%	9.40%	9.40%	6.84%	2.87%	13.38%	4.72%	8.34%	5.02%	
YTD Gain/Decline over previous year	\$ 37,994.95	61,711.89	\$ 100,192.52	\$ 111,968.64	\$ 185,446.63	\$ 223,353.73	\$ 261,544.99	\$ 271,713.79	\$ 319,338.96	\$ 345,992.67	\$ 390,013.83	\$ 427,596.25	
	5.12%	3.66%	3.67%	3.18%	4.31%	4.75%	4.97%	4.84%	5.35%	5.29%	5.52%	5.47%	
<b>Fiscal 2012-2013</b>													
HOTEL MOTEL TOTALS	\$710,921.54	\$ 905,677.98	\$ 999,339.49	\$ 761,082.34	\$ 750,520.78	\$ 382,476.17	\$ 523,432.60	\$ 336,172.61	\$ 341,291.97	\$ 530,565.68	\$ 503,888.32	\$ 711,472.33	\$7,456,841.81
SHORT TERM TOTALS	\$ 31,554.01	37,108.79	\$ 43,190.99	\$ 31,519.26	\$ 31,250.81	\$ 20,581.31	\$ 34,553.18	\$ 18,149.36	\$ 14,748.08	\$ 34,030.50	\$ 24,237.93	\$ 37,431.55	\$ 358,355.77
<b>COMBINED Monthly TOTAL</b>	<b>\$742,475.55</b>	<b>\$ 942,786.77</b>	<b>\$ 1,042,530.48</b>	<b>\$ 792,601.60</b>	<b>\$ 781,771.59</b>	<b>\$ 403,057.48</b>	<b>\$ 557,985.78</b>	<b>\$ 354,321.97</b>	<b>\$ 356,040.05</b>	<b>\$ 564,596.18</b>	<b>\$ 528,126.25</b>	<b>\$ 748,903.88</b>	<b>\$7,815,197.58</b>
Year to Date TOTALS	\$742,475.55	1,685,262.32	\$2,727,792.80	\$3,520,394.40	\$4,302,165.99	\$4,705,223.47	\$5,263,209.25	\$5,617,531.22	\$5,973,571.27	\$6,538,167.45	\$7,066,293.70	\$7,815,197.58	



Actuals represent the amount paid for a specific month even though cash may have been deposited the following month.