

**LODGERS TAX REPORTED**

<b>Fiscal 2015-2016</b>	<u>June</u>	<u>July</u>	<u>August</u>	<u>September</u>	<u>October</u>	<u>November</u>	<u>December</u>	<u>January</u>	<u>February</u>	<u>March</u>	<u>April</u>	<u>May</u>	<u>TOTAL</u>
HOTEL MOTEL TOTALS	\$819,778.82	\$ 974,110.88	\$ 1,153,452.53	\$ 889,374.73	\$ 935,039.46	\$ -	\$ -	\$ -	\$ -	\$ -	\$ -	\$ -	4,771,756.42
SHORT TERM TOTALS	\$ 43,407.39	\$ 57,123.10	\$ 65,684.71	\$ 53,523.09	\$ 54,181.70	\$ -	\$ -	\$ -	\$ -	\$ -	\$ -	\$ -	\$ 273,919.99
<b>COMBINED Monthly TOTAL</b>	<b>\$863,186.21</b>	<b>\$ 1,031,233.98</b>	<b>\$ 1,219,137.24</b>	<b>\$ 942,897.82</b>	<b>\$ 989,221.16</b>	<b>\$ -</b>	<b>\$ -</b>	<b>\$ -</b>	<b>\$ -</b>	<b>\$ -</b>	<b>\$ -</b>	<b>\$ -</b>	<b>\$5,045,676.41</b>
<b>Year to Date TOTALS</b>	<b>\$863,186.21</b>	<b>\$ 1,894,420.19</b>	<b>\$ 3,113,557.43</b>	<b>\$ 4,056,455.25</b>	<b>\$ 5,045,676.41</b>	<b>\$ -</b>	<b>\$ -</b>	<b>\$ -</b>	<b>\$ -</b>	<b>\$ -</b>	<b>\$ -</b>	<b>\$ -</b>	
Monthly Gain/Decline previous year	\$ 5,353.98	\$ (56,234.48)	\$ 26,028.34	\$ 41,171.04	\$ 120,910.64	\$ -	\$ -	\$ -	\$ -	\$ -	\$ -	\$ -	
	0.62%	-5.17%	2.18%	4.57%	13.92%	0.00%	0.00%	0.00%	0.00%	0.00%	0.00%	0.00%	
YTD Gain/Decline over previous year	\$ 5,353.98	\$ (50,880.50)	\$ (24,852.16)	\$ 16,318.88	\$ 137,229.52	\$ -	\$ -	\$ -	\$ -	\$ -	\$ -	\$ -	
	0.62%	-2.62%	-0.79%	0.40%	2.80%	0.00%	0.00%	0.00%	0.00%	0.00%	0.00%	0.00%	

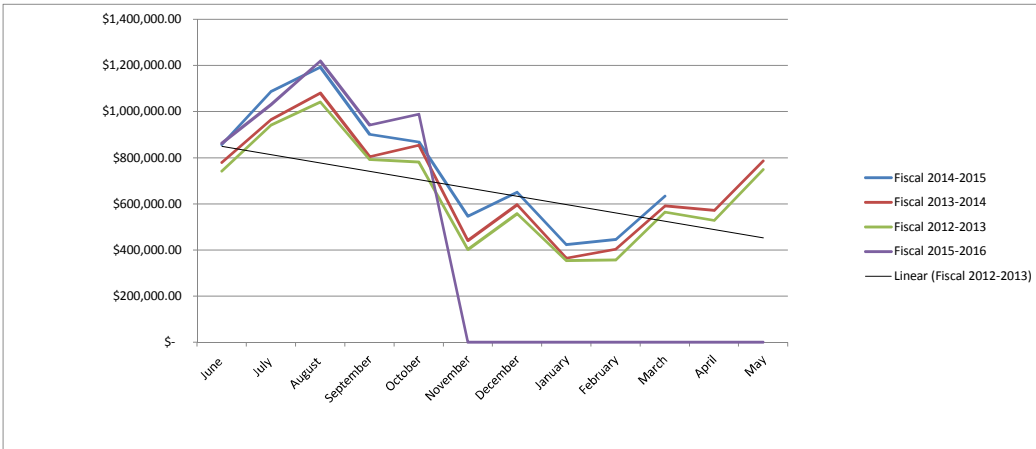
<b>Fiscal 2014-2015</b>	<u>June</u>	<u>July</u>	<u>August</u>	<u>September</u>	<u>October</u>	<u>November</u>	<u>December</u>	<u>January</u>	<u>February</u>	<u>March</u>	<u>April</u>	<u>May</u>	<u>TOTAL</u>
HOTEL MOTEL TOTALS	\$817,848.38	\$ 1,044,642.06	\$ 1,140,493.35	\$ 857,470.01	\$ 814,263.43	\$ 514,194.37	\$ 598,500.41	\$ 404,807.16	\$ 423,923.48	\$ 606,638.51	\$ 606,645.22	\$ 786,985.17	8,616,411.55
SHORT TERM TOTALS	\$ 39,983.85	\$ 42,826.40	\$ 52,615.55	\$ 44,256.77	\$ 54,047.09	\$ 32,367.40	\$ 52,651.33	\$ 19,070.24	\$ 21,114.70	\$ 27,942.41	\$ 37,161.53	\$ 41,801.40	\$ 465,838.67
<b>COMBINED Monthly TOTAL</b>	<b>\$857,832.23</b>	<b>\$ 1,087,468.46</b>	<b>\$ 1,193,108.90</b>	<b>\$ 901,726.78</b>	<b>\$ 868,310.52</b>	<b>\$ 546,561.77</b>	<b>\$ 651,151.74</b>	<b>\$ 423,877.40</b>	<b>\$ 445,038.18</b>	<b>\$ 634,580.92</b>	<b>\$ 643,806.75</b>	<b>\$ 828,786.57</b>	<b>\$9,082,250.22</b>
<b>Year to Date TOTALS</b>	<b>\$857,832.23</b>	<b>\$ 1,945,300.69</b>	<b>\$ 3,138,409.59</b>	<b>\$ 4,040,136.37</b>	<b>\$ 4,908,446.89</b>	<b>\$ 5,455,008.66</b>	<b>\$ 6,106,160.40</b>	<b>\$ 6,530,037.80</b>	<b>\$ 6,975,075.98</b>	<b>\$ 7,609,656.90</b>	<b>\$ 8,253,463.65</b>		
Monthly Gain/Decline previous year	\$ 77,361.73	\$ 120,964.75	\$ 112,097.79	\$ 97,349.06	\$ 13,060.94	\$ 105,597.19	\$ 54,974.70	\$ 59,386.63	\$ 41,372.96	\$ 43,331.03	\$ 71,659.34		
	9.91%	12.52%	10.37%	12.10%	1.53%	23.95%	9.22%	16.29%	10.25%	7.33%	12.52%		
YTD Gain/Decline over previous year	\$ 77,361.73	\$ 198,326.48	\$ 310,424.27	\$ 407,773.33	\$ 420,834.27	\$ 526,431.46	\$ 581,406.16	\$ 640,792.79	\$ 682,165.75	\$ 725,496.78	\$ 797,156.12		
	9.91%	11.35%	10.98%	11.23%	9.38%	10.68%	10.52%	10.88%	10.84%	10.54%	10.69%		

<b>Fiscal 2013-2014</b>	<u>June</u>	<u>July</u>	<u>August</u>	<u>September</u>	<u>October</u>	<u>November</u>	<u>December</u>	<u>January</u>	<u>February</u>	<u>March</u>	<u>April</u>	<u>May</u>	<u>TOTAL</u>
HOTEL MOTEL TOTALS	\$747,023.55	\$ 920,757.76	\$ 1,030,665.11	\$ 763,352.91	\$ 825,488.39	\$ 416,010.05	\$ 551,208.66	\$ 342,218.25	\$ 381,430.60	\$ 558,374.96	\$ 543,393.61	\$ 735,554.89	\$7,815,478.74
SHORT TERM TOTALS	\$ 33,446.95	\$ 45,745.95	\$ 50,346.00	\$ 41,024.81	\$ 29,761.19	\$ 24,954.53	\$ 44,968.38	\$ 22,272.52	\$ 22,234.62	\$ 32,874.93	\$ 28,753.80	\$ 50,931.41	\$ 427,315.09
<b>COMBINED Monthly TOTAL</b>	<b>\$780,470.50</b>	<b>\$ 966,503.71</b>	<b>\$ 1,081,011.11</b>	<b>\$ 804,377.72</b>	<b>\$ 855,249.58</b>	<b>\$ 440,964.58</b>	<b>\$ 596,177.04</b>	<b>\$ 364,490.77</b>	<b>\$ 403,665.22</b>	<b>\$ 591,249.89</b>	<b>\$ 572,147.41</b>	<b>\$ 786,486.30</b>	<b>\$8,242,793.83</b>
<b>Year to Date TOTALS</b>	<b>\$780,470.50</b>	<b>\$ 1,746,974.21</b>	<b>\$ 2,827,985.32</b>	<b>\$ 3,632,363.04</b>	<b>\$ 4,487,612.62</b>	<b>\$ 4,928,577.20</b>	<b>\$ 5,524,754.24</b>	<b>\$ 5,889,245.01</b>	<b>\$ 6,292,910.23</b>	<b>\$ 6,884,160.12</b>	<b>\$ 7,456,307.53</b>	<b>\$ 8,242,793.83</b>	
Monthly Gain/Decline previous year	\$ 37,994.95	\$ 23,716.94	\$ 38,480.63	\$ 11,776.12	\$ 73,477.99	\$ 37,907.10	\$ 38,191.26	\$ 10,168.80	\$ 47,625.17	\$ 26,653.71	\$ 44,021.16	\$ 37,582.42	
	5.12%	2.52%	3.69%	1.49%	9.40%	9.40%	6.84%	2.87%	13.38%	4.72%	8.34%	5.02%	
YTD Gain/Decline over previous year	\$ 37,994.95	\$ 61,711.89	\$ 100,192.52	\$ 111,968.64	\$ 185,446.63	\$ 223,353.73	\$ 261,544.99	\$ 271,713.79	\$ 319,338.96	\$ 345,992.67	\$ 390,013.83	\$ 427,596.25	
	5.12%	3.66%	3.67%	3.18%	4.31%	4.75%	4.97%	4.84%	5.35%	5.29%	5.52%	5.47%	

<b>Fiscal 2012-2013</b>	<u>June</u>	<u>July</u>	<u>August</u>	<u>September</u>	<u>October</u>	<u>November</u>	<u>December</u>	<u>January</u>	<u>February</u>	<u>March</u>	<u>April</u>	<u>May</u>	<u>TOTAL</u>
HOTEL MOTEL TOTALS	\$710,921.54	\$ 905,677.98	\$ 999,339.49	\$ 761,082.34	\$ 750,520.78	\$ 382,476.17	\$ 523,432.60	\$ 336,172.61	\$ 341,291.97	\$ 530,565.68	\$ 503,888.32	\$ 711,472.33	\$7,456,841.81
SHORT TERM TOTALS	\$ 31,554.01	\$ 37,108.79	\$ 43,190.99	\$ 31,519.26	\$ 31,250.81	\$ 20,581.31	\$ 34,553.18	\$ 18,149.36	\$ 14,748.08	\$ 34,030.50	\$ 24,237.93	\$ 37,431.55	\$ 358,355.77
<b>COMBINED Monthly TOTAL</b>	<b>\$742,475.55</b>	<b>\$ 942,786.77</b>	<b>\$ 1,042,530.48</b>	<b>\$ 792,601.60</b>	<b>\$ 781,771.59</b>	<b>\$ 403,057.48</b>	<b>\$ 557,985.78</b>	<b>\$ 354,321.97</b>	<b>\$ 356,040.05</b>	<b>\$ 564,596.18</b>	<b>\$ 528,126.25</b>	<b>\$ 748,903.88</b>	<b>\$7,815,197.58</b>
<b>Year to Date TOTALS</b>	<b>\$742,475.55</b>	<b>\$ 1,685,262.32</b>	<b>\$ 2,727,792.80</b>	<b>\$ 3,520,394.40</b>	<b>\$ 4,302,165.99</b>	<b>\$ 4,705,223.47</b>	<b>\$ 5,263,209.25</b>	<b>\$ 5,617,531.22</b>	<b>\$ 5,973,571.27</b>	<b>\$ 6,538,167.45</b>	<b>\$ 7,066,293.70</b>	<b>\$ 7,815,197.58</b>	



Actuals represent the amount paid for a specific month even though cash may have been deposited the following month.