

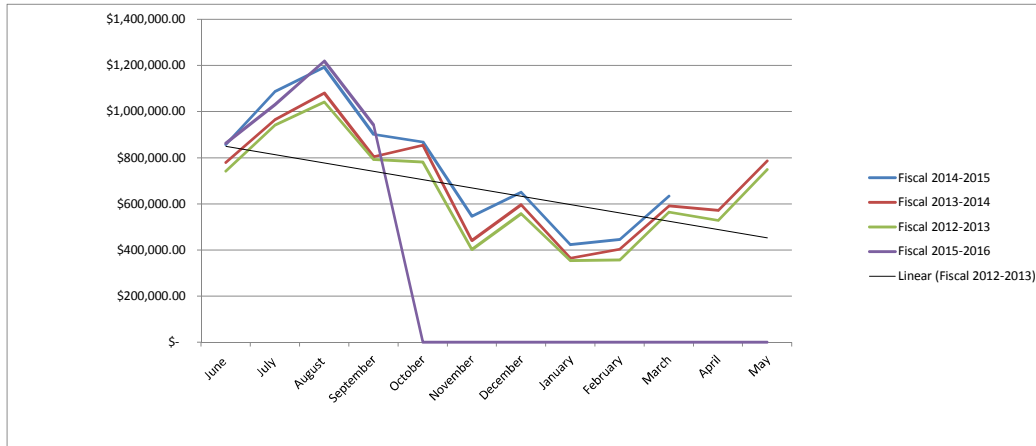
LODGERS TAX REPORTED

Fiscal 2015-2016	June	July	August	September	October	November	December	January	February	March	April	May	TOTAL
HOTEL MOTEL TOTALS	\$819,778.82	\$ 974,110.88	\$ 1,153,452.53	\$ 889,374.73	\$ -	\$ -	\$ -	\$ -	\$ -	\$ -	\$ -	\$ -	\$ 3,836,716.96
SHORT TERM TOTALS	\$ 43,407.39	\$ 57,123.10	\$ 65,684.71	\$ 53,523.09	\$ -	\$ -	\$ -	\$ -	\$ -	\$ -	\$ -	\$ -	\$ 219,738.29
COMBINED Monthly TOTAL	\$863,186.21	\$ 1,031,233.98	\$ 1,219,137.24	\$ 942,897.82	\$ -	\$ -	\$ -	\$ -	\$ -	\$ -	\$ -	\$ -	\$ 4,056,455.25
Year to Date TOTALS	\$863,186.21	\$ 1,894,420.19	\$ 3,113,557.43	\$ 4,056,455.25	\$ -	\$ -	\$ -	\$ -	\$ -	\$ -	\$ -	\$ -	\$ -
Monthly Gain/Decline previous year	\$ 5,353.98	\$ (56,234.48)	\$ 26,028.34	\$ 41,171.04	\$ -	\$ -	\$ -	\$ -	\$ -	\$ -	\$ -	\$ -	
	0.62%	-5.17%	2.18%	4.57%	0.00%	0.00%	0.00%	0.00%	0.00%	0.00%	0.00%	0.00%	
YTD Gain/Decline over previous year	\$ 5,353.98	\$ (50,880.50)	\$ (24,852.16)	\$ 16,318.88	\$ -	\$ -	\$ -	\$ -	\$ -	\$ -	\$ -	\$ -	
	0.62%	-2.62%	-0.79%	0.40%	0.00%	0.00%	0.00%	0.00%	0.00%	0.00%	0.00%	0.00%	

Fiscal 2014-2015	June	July	August	September	October	November	December	January	February	March	April	May	TOTAL
HOTEL MOTEL TOTALS	\$817,848.38	\$ 1,044,642.06	\$ 1,140,493.35	\$ 857,470.01	\$ 814,263.43	\$ 514,194.37	\$ 598,500.41	\$ 404,807.16	\$ 423,923.48	\$ 606,638.51	\$ 606,645.22	\$ 786,985.17	\$ 8,616,411.55
SHORT TERM TOTALS	\$ 39,983.85	\$ 42,826.40	\$ 52,615.55	\$ 44,256.77	\$ 54,047.09	\$ 32,367.40	\$ 52,651.33	\$ 19,070.24	\$ 21,114.70	\$ 27,942.41	\$ 37,161.53	\$ 41,801.40	\$ 465,838.67
COMBINED Monthly TOTAL	\$857,832.23	\$ 1,087,468.46	\$ 1,193,108.90	\$ 901,726.78	\$ 868,310.52	\$ 546,561.77	\$ 651,151.74	\$ 423,877.40	\$ 445,038.18	\$ 634,580.92	\$ 643,806.75	\$ 828,786.57	\$ 9,082,250.22
Year to Date TOTALS	\$857,832.23	\$ 1,945,300.69	\$ 3,138,409.59	\$ 4,040,136.37	\$ 4,908,446.89	\$ 5,455,008.66	\$ 6,106,160.40	\$ 6,530,037.80	\$ 6,975,075.98	\$ 7,609,656.90	\$ 8,253,463.65	\$ 8,253,463.65	\$ 8,253,463.65
Monthly Gain/Decline previous year	\$ 77,361.73	\$ 120,964.75	\$ 112,097.79	\$ 97,349.06	\$ 13,060.94	\$ 105,597.19	\$ 54,974.70	\$ 59,386.63	\$ 41,372.96	\$ 43,331.03	\$ 71,659.34	\$ 71,659.34	
	9.91%	12.52%	10.37%	12.10%	1.53%	23.95%	9.22%	16.29%	10.25%	7.33%	12.52%	12.52%	
YTD Gain/Decline over previous year	\$ 77,361.73	\$ 198,326.48	\$ 310,424.27	\$ 407,773.33	\$ 420,834.27	\$ 526,431.46	\$ 581,406.16	\$ 640,792.79	\$ 682,165.75	\$ 725,496.78	\$ 797,156.12	\$ 797,156.12	
	9.91%	11.35%	10.98%	11.23%	9.38%	10.68%	10.52%	10.88%	10.84%	10.54%	10.69%	10.69%	

Fiscal 2013-2014	June	July	August	September	October	November	December	January	February	March	April	May	TOTAL
HOTEL MOTEL TOTALS	\$747,023.55	\$ 920,757.76	\$ 1,030,665.11	\$ 763,352.91	\$ 825,488.39	\$ 416,010.05	\$ 551,208.66	\$ 342,218.25	\$ 381,430.60	\$ 558,374.96	\$ 543,393.61	\$ 735,554.89	\$ 7,815,478.74
SHORT TERM TOTALS	\$ 33,446.95	\$ 45,745.95	\$ 50,346.00	\$ 41,024.81	\$ 29,761.19	\$ 24,954.53	\$ 44,968.38	\$ 22,272.52	\$ 22,234.62	\$ 32,874.93	\$ 28,753.80	\$ 50,931.41	\$ 427,315.09
COMBINED Monthly TOTAL	\$780,470.50	\$ 966,503.71	\$ 1,081,011.11	\$ 804,377.72	\$ 855,249.58	\$ 440,964.58	\$ 596,177.04	\$ 364,490.77	\$ 403,665.22	\$ 591,249.89	\$ 572,147.41	\$ 786,486.30	\$ 8,242,793.83
Year to Date TOTALS	\$780,470.50	\$ 1,746,974.21	\$ 2,827,985.32	\$ 3,632,363.04	\$ 4,487,612.62	\$ 4,928,577.20	\$ 5,524,754.24	\$ 5,889,245.01	\$ 6,292,910.23	\$ 6,884,160.12	\$ 7,456,307.53	\$ 8,242,793.83	\$ 8,242,793.83
Monthly Gain/Decline previous year	\$ 37,994.95	\$ 23,716.94	\$ 38,480.63	\$ 11,776.12	\$ 73,477.99	\$ 37,907.10	\$ 38,191.26	\$ 10,168.80	\$ 47,625.17	\$ 26,653.71	\$ 44,021.16	\$ 37,582.42	
	5.12%	2.52%	3.69%	1.49%	9.40%	9.40%	6.84%	2.87%	13.38%	4.72%	8.34%	5.02%	
YTD Gain/Decline over previous year	\$ 37,994.95	\$ 61,711.89	\$ 100,192.52	\$ 111,968.64	\$ 185,446.63	\$ 223,353.73	\$ 261,544.99	\$ 271,713.79	\$ 319,338.96	\$ 345,992.67	\$ 390,013.83	\$ 427,596.25	
	5.12%	3.66%	3.67%	3.18%	4.31%	4.75%	4.97%	4.84%	5.35%	5.29%	5.52%	5.47%	

Fiscal 2012-2013	June	July	August	September	October	November	December	January	February	March	April	May	TOTAL
HOTEL MOTEL TOTALS	\$710,921.54	\$ 905,677.98	\$ 999,339.49	\$ 761,082.34	\$ 750,520.78	\$ 382,476.17	\$ 523,432.60	\$ 336,172.61	\$ 341,291.97	\$ 530,565.68	\$ 503,888.32	\$ 711,472.33	\$ 7,456,841.81
SHORT TERM TOTALS	\$ 31,554.01	\$ 37,108.79	\$ 43,190.99	\$ 31,519.26	\$ 31,250.81	\$ 20,581.31	\$ 34,553.18	\$ 18,149.36	\$ 14,748.08	\$ 34,030.50	\$ 24,237.93	\$ 37,431.55	\$ 358,355.77
COMBINED Monthly TOTAL	\$742,475.55	\$ 942,786.77	\$ 1,042,530.48	\$ 792,601.60	\$ 781,771.59	\$ 403,057.48	\$ 557,985.78	\$ 354,321.97	\$ 356,040.05	\$ 564,596.18	\$ 528,126.25	\$ 748,903.88	\$ 7,815,197.58
Year to Date TOTALS	\$742,475.55	\$ 1,685,262.32	\$ 2,727,792.80	\$ 3,520,394.40	\$ 4,302,165.99	\$ 4,705,223.47	\$ 5,263,209.25	\$ 5,617,531.22	\$ 5,973,571.27	\$ 6,538,167.45	\$ 7,066,293.70	\$ 7,815,197.58	\$ 7,815,197.58



Actuals represent the amount paid for a specific month even though cash may have been deposited the following month.