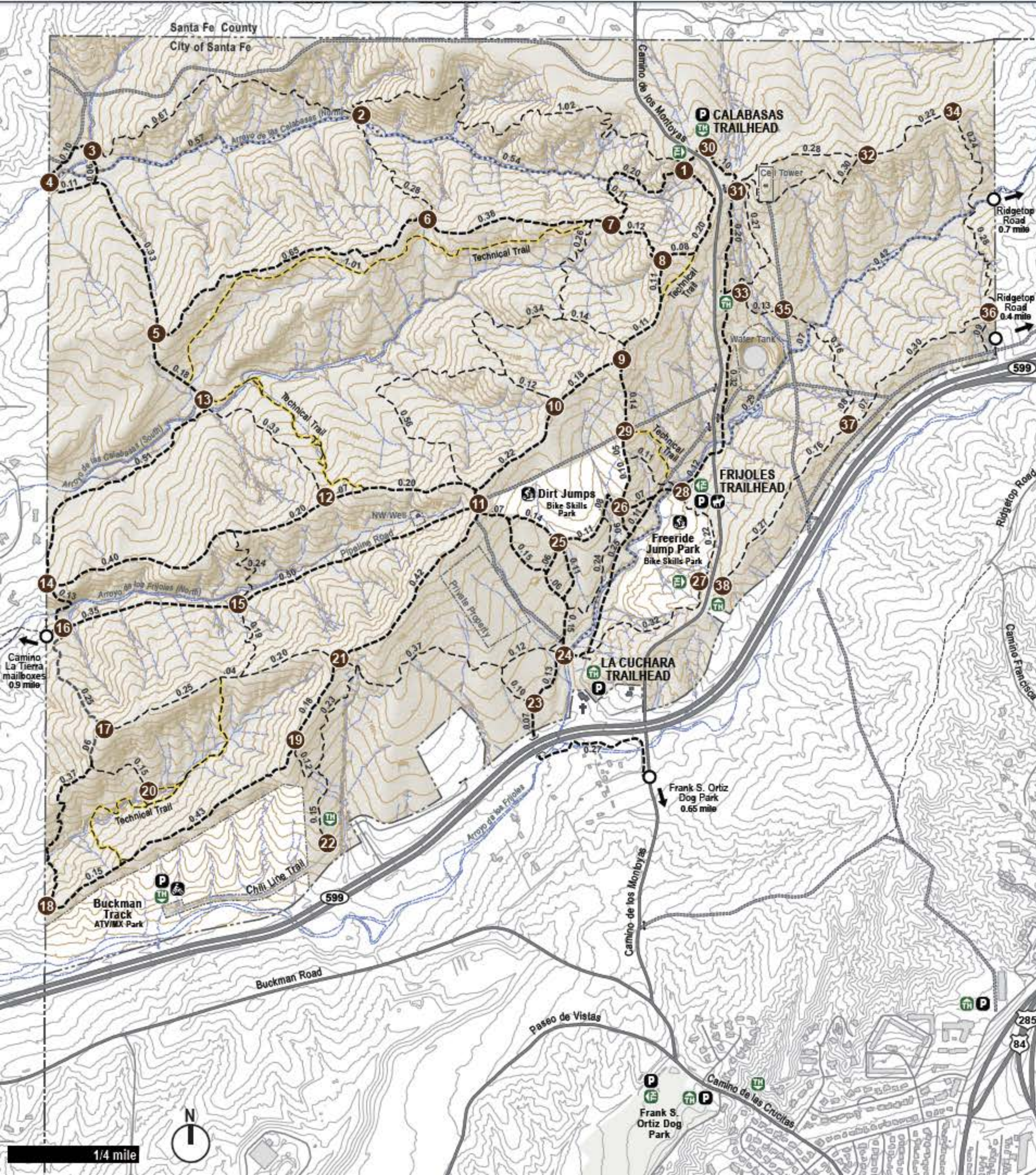


La Tierra TRAILS



MAP INFORMATION

TRAILS	USERS	10 ft. Contour
Multi-Use Trail	Hiker / Biker / Horse	10 ft. Contour
Arroyo Trail	Hiker / Biker / Horse	Trail Junction
Hiker / Biker Trail	Hiker / Biker	Trailhead
Technical Trail	Biker	Parking (10+ vehicles)
Offsite Trail	Biker	Horse Trailer Parking
0.00 Trail Segment Distance (miles)	Trail Access Point	

Welcome to the La Tierra Trails

The La Tierra Trail system offers 25+ miles of hiker, biker, and equestrian trails, plus designated technical parks for BMX, mountain bikes, and ATV/MX. With an elevation range of 350 vertical feet over a 1,500 acre area, the La Tierra Trails are designated as easy to moderate hiking trails and easy to moderate biking trails, all within three miles of the Santa Fe Plaza.

Multi-Use trails are generally wider trails with less abrupt grade changes, while Hiker-Biker trails are mostly narrower, single-track trails. Some trails within the system are identified as 'technical trails' with features or steeper grades.

Route suggestions include:

A Short Hike (2.0 miles)
Park at the Calabasas Trailhead off Camino de los Montoyas. Start at junction **1** proceed to **2 6 7** and return to **1**

Ridgetop Loop with Good Views (2.7 miles)
Park at La Cuchara Trailhead. Start at **24** proceed to **21 17 16 14 12 11 25** and back to the trailhead.

Mountain Biking and Trail Running Loop (10.0 miles)
Park at La Cuchara Trailhead. Start at **24** proceed to **19 18 17 16 14 13 5 3 2 1**. Cross road to east side to **30 32 34 36 37 35 33 31 30**. Cross road to west side to **1 8 9**. Take long loop up to **10**. Take longer route down and back up to **11 21 24** and back to the trailhead.

Map data source: 2013 City of Santa Fe and Santa Fe County GIS data