

**REQUEST FOR QUALIFICATIONS**

**UPDATE April 1, 2021**

**CITY OF SANTA FE SEEKS ARTISTS FOR  
CULTURE CONNECTS: COMMUNITY CONVENTION CENTER MURAL**

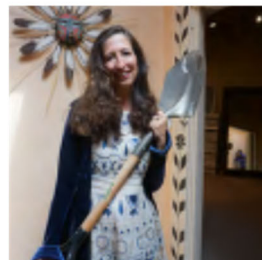
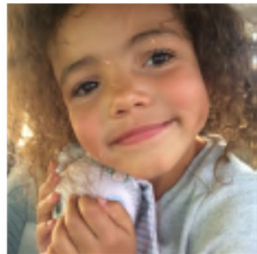
*"Culture embodies the shared complex and diverse heritage of a community, including its tangible and intangible virtues...It is the quiet and restless imagination that becomes expression, from which emanates writing, song, performance, painting, sculpture, cuisine, dance, design and story. When recognized, coalesced and leveraged, culture is transformative. It ignites creativity, consciousness and capacity."*

Project Location: Santa Fe Community Convention Center  
Community Gallery Wall located off of Marcy Street, corridor under portal

Project Budget: \$50,000

**DATE ISSUED: March 18, 2021/REISSUED on April 1, 2021**

**DUE DATE: April 22, 2021**



Photos courtesy of (from left to right): Chrissie Orr, Chris Hanna, Chris Hanna, Chris Hanna, Juan Rios, Juan Rios, Xochitl Chavez, Xochitl Chavez

**OVERVIEW /HISTORICAL**

"Located at the intersection of the 35<sup>th</sup> parallel north and the 105<sup>th</sup> meridian west, at 7,199 feet above sea level, the City of Santa Fe covers an area of 52.502 square miles. More than 80,000 people live here. It is a place set in the context of Indigenous homelands. Beneath the modern city lay the remains of a village including gardens, middens and wall footings delineating houses

## Art in Public Places Mayor's Office

dating from between A.D. 600 and 1425. Contemporary Native American Tewa communities still recognize the site as 'Ogap'oge (White Shell Water Place).

When Spain would officially occupy what were former Indigenous homelands, beginning about 1607 this particular land would eventually come to be resettled and named La Villa Real de la Santa Fé. Since the 17<sup>th</sup> century, the city has reflected the significance of Hispanics in a rich variation of lineage (Indigenous, African, European). This hybridity, though unique in longevity of place, makes it a part, still, of the Mexican-American diaspora.

Over time, people from every state, continent and many ethnic and cultural backgrounds have settled in Santa Fe, a complexity that at times has contributed to both synergy and tension. It is a dynamic rather than static social environment, made rich by people whose values, experiences, histories, traditions, languages, philosophies and creativity make Santa Fe unique among world cities."

Culture Connects Santa Fe: A Cultural Cartography  
[https://www.santafenm.gov/cultural\\_roadmap](https://www.santafenm.gov/cultural_roadmap)

**This project seeks to activate and celebrate the people of Santa Fe.**

This project is funded through the Art In Public Places program which allocates 2% of capital improvement projects towards permanent public artworks. These projects are part of the 2018 Gross Revenue Tax Bond projects.

### GOALS AND LOCATION OF ARTWORK – UPDATED

Portal/Community Gallery Wall  
Located off of Marcy Street



## **PUBLIC ART IS AN ESSENTIAL ELEMENT OF THE BUILT ENVIRONMENT AND SENSE OF PLACE. THROUGH THIS PROJECT, WE SEEK TO:**

- Enhance the lives of Santa Feans, children, and families through the creation of engaging public spaces available for daily use
- Invest in local artists through large-scale commissions
- Support place-keeping in our city, and increase civic pride through public art
- Create lasting, innovative works of art that influence and shape the development of underutilized, underrepresented spaces as locations for community gathering and celebration
- Increase awareness of our cultural histories, shared values and future generations
- Promote public art as a meaningful art form
- Contribute to Santa Fe's standing as a destination for public art
- Highlight the cultural relevance of art as a means to represent community

## **HISTORIC DISTRICT CONSIDERATIONS**

The Community Convention Center is sited on sacred grounds and situated within the Downtown Historic District. The following considerations must be taken into account:

- Mural to be painted directly onto tower walls
- Non-aerosol paint application
- Protective coating to be applied

## **BUDGET**

The all-inclusive artwork budget is **approximately \$50,000**. This budget includes artist fees, liability insurance, and all costs associated with the design, engineering, fabrication, permitting, delivery and installation of the artwork.

## **TENTATIVE SCHEDULE**

<b>April 22, 2021</b>	<b>Deadline for RFQ Submissions 5pm MST to <a href="mailto:artscommission@santafenm.gov">artscommission@santafenm.gov</a></b>
May 2021	Application Reviews and Finalists (3-5 Artists) Selected to Develop Proposals
June/July 2021	Finalists presentations; Artist and Artwork Proposal Selected
August 2021	Design presentation to Arts Commission and Historic Board
Summer 2021	Artwork Final Design Completed
Summer 2021	Fabrication Started
September 2021	Artwork Installation Completed

## **TECHNICAL ASSISTANCE – ONE-ON-ONE APPOINTMENTS**

If you would like your submission materials reviewed, please make an appointment no less than two weeks (or by April 8, 2021) prior to the submission deadline. Technical assistance needs often increase during the final two weeks of the call; therefore we cannot guarantee a review of materials during the last days of the call. Assistance is offered on a first-come first-served basis. To request an appointment, email to [artscommission@santafenm.gov](mailto:artscommission@santafenm.gov) no later than April 8, 2021 5pm MST.

# Art in Public Places Mayor's Office

## ELIGIBILITY

This public art project is open to artists or artist teams led by an experienced artist residing or working within the City of Santa Fe and Santa Fe County. Artists who have not had medium scale project experience are encouraged to apply in artist teams with other artists of appropriate experience. Artists who have public artwork already in the Public Art Portfolio (permanent artworks, does not include temporary) will be eligible if this project has a higher budget than the previously commissioned project or if the artist has not done a public art project with the City for five years. Artist/lead artist must be 18 years of age or older.

## RFQ SELECTION CRITERIA

The Arts and Culture Departments strives to create artworks which reflect aesthetic and technical quality, innovation, site-specificity and civic engagement. The selected artist or artist team will be required to participate in a rigorous design process. This process includes research through site visits and design meetings, conservator review, structural engineering, budget tracking and timeline management.

Artists will be selected on the basis of their qualifications, as demonstrated by the quality of their past work and suitability of their artistic expression for this particular site.

Under Culture Connects with a lens of equity and inclusion, the Arts and Culture Department reserves the right to reserve two (2) of the five (5) finalists positions for Black, Indigenous, People of Color (BIPOC) and those from traditionally underserved communities.

Artist applications will be evaluated on the following criteria:

Artist Selection Criteria	
Artwork	<input type="checkbox"/> Proven artistic merit and strong professional qualifications that demonstrate the artist's ability to achieve the guiding principles of the Art in Public Places Program: aesthetic and technical quality; innovation; site specificity; civic engagement; and the ability to transform a space and user experience <input type="checkbox"/> Ability to create artwork for the location indicated in this RFQ
Function & Technology	<input type="checkbox"/> Artist or artist team demonstrate ability to effectively assess the spatial and technical conditions of an architectural space and propose an integrated, easily maintainable, durable, permanent artwork <input type="checkbox"/> Proven experience completing a prior exterior mural
Process and Budget	<input type="checkbox"/> Artist or artist team demonstrate ability to execute project within project timeline and within budget <input type="checkbox"/> Artist or artist team to demonstrate ability to work with a multidisciplinary team, for example, government agencies, architects, and engineers

## Art in Public Places Mayor's Office

### TO APPLY

Application materials must be received **on or before April 22 2021 at 5pm Mountain Standard Time to [artscommission@santafenm.gov](mailto:artscommission@santafenm.gov)**; **Subject: Culture Connects: Community Convention Center Mural Public Art Project Submittal.**

Any application materials received after the date and time specified above will be rejected and considered non-responsive, and returned to the Artist unopened.

### Submit the following materials as **ONE PDF or MS Word format**:

NOTE: if you need assistance in creating this document, please set an appointment for assistance. Assistance is offered on a first-come first-served basis. To request an appointment, email to [artscommission@santafenm.gov](mailto:artscommission@santafenm.gov) no later than April 8, 2021 5pm MST.

1. A maximum one-page letter of interest, addressing:
  - ☐ Your artistic practice, your sources of inspiration, and your method for developing high quality, innovative, and timelessly meaningful artwork
  - ☐ Why this project interests you, your connection to Santa Fe and perspective on cultural history. You may indicate if you identify as BIPOC
2. In one page (maximum) address this additional information:
  - ☐ Your approach to public engagement
  - ☐ Your demonstrated project approach when faced with restricted site conditions, strict technical constraints, and materials requirements, including specifications to create applied on-site murals utilizing scaffolding and/or lifts
  - ☐ Artist teams (if applicable): your respective roles in the collaboration and history of collaboration
3. Resume (not to exceed two pages)
  - ☐ Including name, mailing address, phone number(s), fax, email, and web page/Instagram or other social media/digital platform (if applicable)
  - ☐ Include a team bio if applying as an artist team
  - ☐ List your related arts and community experience
4. Up to 6 images of your relevant work (refer to Artist Selection Criteria)  
Please select work that best reflects your approach and style relevant to this project  
Include for each image:
  - ☐ Title, date, medium, and dimensions
  - ☐ Artwork location
  - ☐ Brief project description (maximum 100 characters)
  - ☐ Project budget
  - ☐ Commissioning agency or client, and project manager (if applicable)
5. Three professional references, with title, phone, and email addresses included

**Application materials must be received on or before April 22, 2021 at 5pm MST to:**

**TO: [artscommission@santafenm.gov](mailto:artscommission@santafenm.gov)**  
**SUBJ: Culture Connects: Multicultural Mural Public Art Project Submittal**



## SELECTION PROCESS

A Project Coordination Committee (PCC) is composed of but not limited to an Arts Commissioner; one representative Community Engagement Department; historic and arts professionals and community member(s). The Arts and Culture Department staff serves as a non-voting advisor to the PCC. Artists should send images that can be understood by an audience that is not professionally versed in the arts. Artists should not send art proposals in response to this RFQ.

The public artist will be selected through a two phased process:

In the first phase, artists' responses to this RFQ will be evaluated by the Project Coordination Committee (PCC) with facilitation by the Project Manager. Up to five (5) finalists and one alternate will be shortlisted for the second phase.

During the second phase of the selection process, finalists will be invited to develop a conceptual design proposal and presentation to the PCC. With guidance from Arts and Culture Department, the PCC reviews artist applications, conducts finalist interviews, selects the artists or artist teams and reviews the project from design development through artwork installation. Proposal honorarium of \$500 for the development and presentation of a conceptual proposal.

NOTE: finalists will be required to register as a City Vendor, have a City Business License and submit a W9 in order to receive payment.

**Artists should send images that can be understood by an audience that is not professionally versed in the arts.**

**Do not send art proposals in response to this RFQ. This is qualification stage only and finalists will be selected to develop conceptual proposals during Phase 2 (see previous page).**

## ABOUT THE PARTICIPATING DEPARTMENTS

**Arts and Culture Department** provides leadership by and for the City to support arts and cultural affairs; we recommend policies and programs that develop and promote artistic excellence in our community. Our vision is for a thriving, collaborative, interdisciplinary cultural community that possesses a variety of resources, spaces and pathways with which to support educational, economic and creative needs of Santa Fe through the lens of Culture Connects to ensure diversity, equity, inclusion and access.

[https://www.santafenm.gov/arts\\_and\\_culture\\_department](https://www.santafenm.gov/arts_and_culture_department)

## Community Engagement Department

The City of Santa Fe Communication, Constituent Services, Council Services, and Multimedia staff work together to provide a variety of services and act as a liaison for all things between residents and our local government.

The Constituent and Council Services includes the following:

- Constituent Services
- Council Services
- Communication
- Multimedia

### ADDITIONAL INFORMATION

- *Do not send original artwork.*
- *Late applications will not be considered.*
- *If artists are applying as a team, the team must be declared at the time of application in the letter of interest. Include team bio, outline for the roles and responsibilities of each member, and brief resumes for all team members with the application. Please submit a minimum of 6 images per team (not per artist) of completed or proposed projects.*
- *The Arts and Culture Department reserves the right to accept or reject any and all responses received, or commission an artist through another process.*
- *All artists who submit their materials for review will receive written notification of the results of the selection process, including identification of the selected artist(s).*
- *This request for qualifications does not constitute an offer to contract or a promise for remuneration, recognition, or any other thing. Submission of any materials in response to this request for qualifications will not constitute an express or implied contract. The information contained and/or any program or event described herein may be changed, amended, modified, canceled, revoked or abandoned without notice at any time and for any reason in the sole discretion of the Arts and Culture Department or the City of Santa Fe.*
- *Artists will not be eligible for more than two City permanent public projects at any given time.*
- *Priority will be given to artists who have had no prior commission of the same or higher budget with the Arts and Culture Department.*
- ***If artwork proposal and/or designs are selected, the artist will be required to enter into a contract with the City of Santa Fe. Because the artwork will be located on public property, and because the City of Santa Fe is a public entity subject to laws, rules, and regulations which are not necessarily applicable to private persons or companies, the Arts and Culture Department has prepared a form agreement for use in connection with artwork commissioned for Public Art. A copy of the form agreement can be found on the Arts and Culture's website, at [https://www.santafenm.gov/arts\\_and\\_culture\\_department](https://www.santafenm.gov/arts_and_culture_department)***  
*If an artist is selected, the artist acknowledges that he/she is willing and able to enter into a contract in the form made available on the Arts and Culture Department website. The Arts and Culture Department reserves the right to revise or change its form agreement at any time, for any reason, and to require artists to use the revised form for contracting purposes.*

END OF REQUEST FOR QUALIFICATIONS