

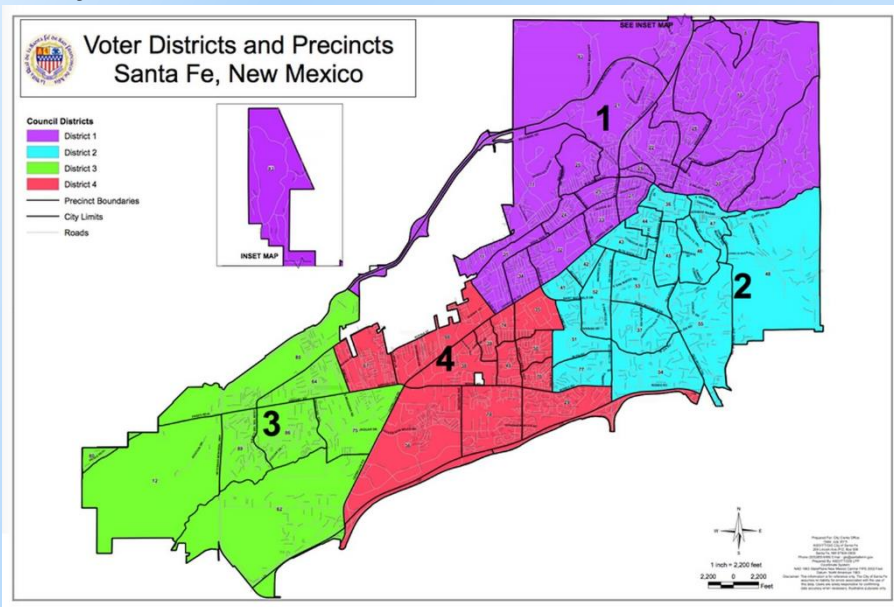
City of Santa Fe Water & Santa Fe County Utilities

Water Resources Planning Webinar

October 19 & 20, 2020



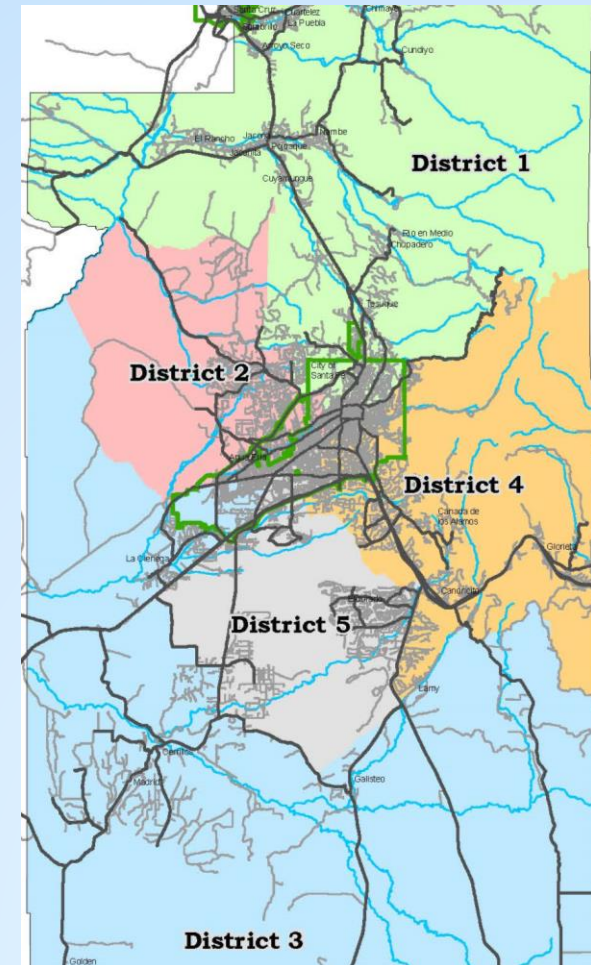
City Council Districts map for poll question



See also https://www.santafenm.gov/district_maps

County Districts map for poll question

See also: <https://santafecountynm.maps.arcgis.com/home/index.html>



Introduction of Panelists

- Jesse Roach : City of Santa Fe Water
- Lucy Moore : Moderator/Facilitator
- Virginie Pointeau : Moderator/Facilitator
- Anjali Bean : County Utilities
- Bill Schneider : City of Santa Fe Water



Webinar Purpose

- This webinar is designed to provide background information.
 - Overview of history of water resources planning and development
 - Current City and County initiatives
 - Proposed planning cycle
- There will be Q&A to provide opportunity for clarifying this background information.



Opportunities for feedback:

- Breakout sessions next week
 - Sunday 10/25 3:30 pm - 5:30 pm
 - Monday 10/26 10 am - noon
 - Thursday 10/29 5:30 pm – 7:30 pm

Zoom info: <https://santafenm-gov.zoom.us/j/8352202097>

Or dial in: 1 346 248 7799 Meeting ID: 835 220 2097

Info at https://www.santafenm.gov/water_division

- Online survey (more on this later).

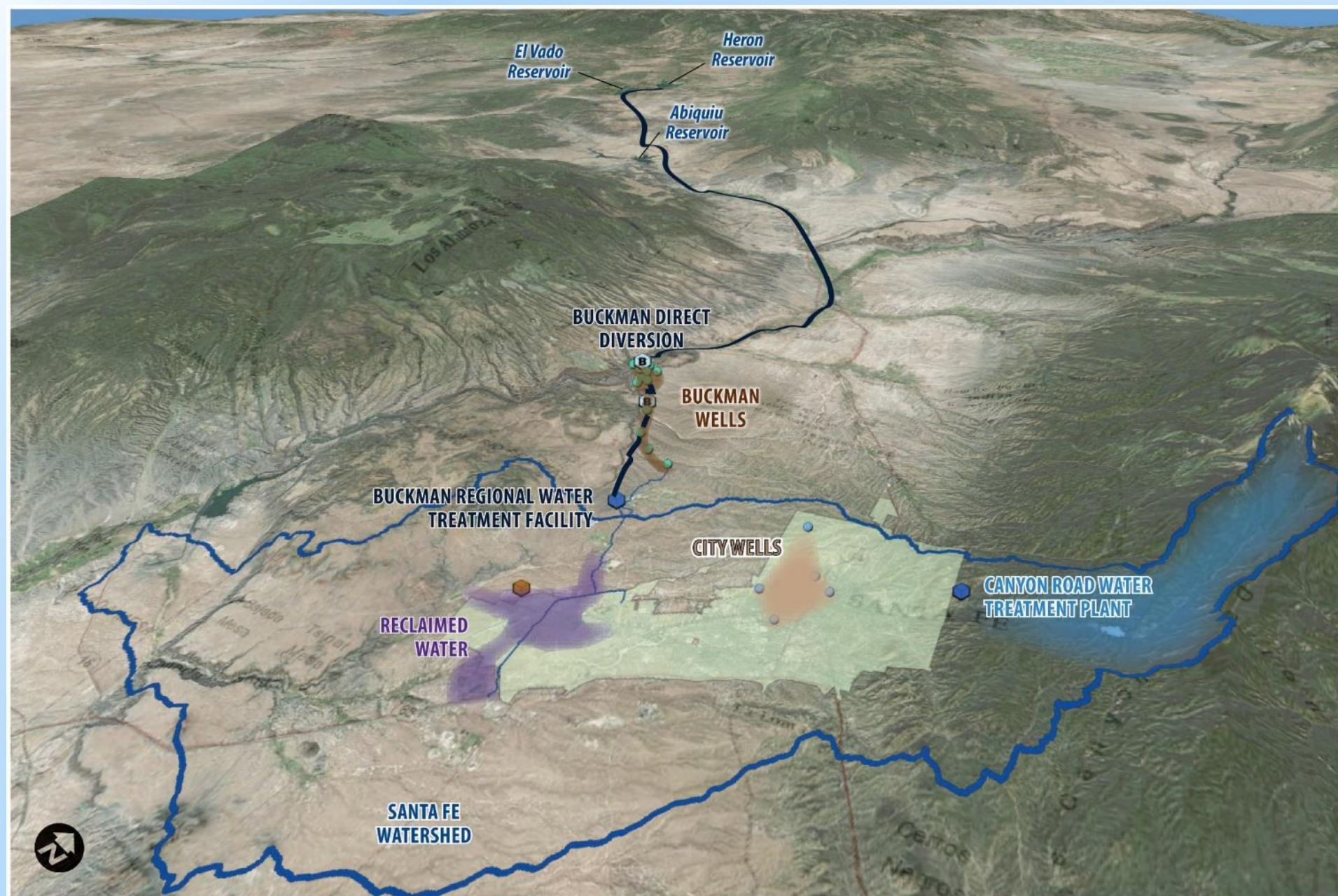
<https://forms.gle/8DxJ3aCAzzXmpArw5>

or from https://www.santafenm.gov/water_division

or https://www.santafecountynm.gov/public_works/utilities/wrp

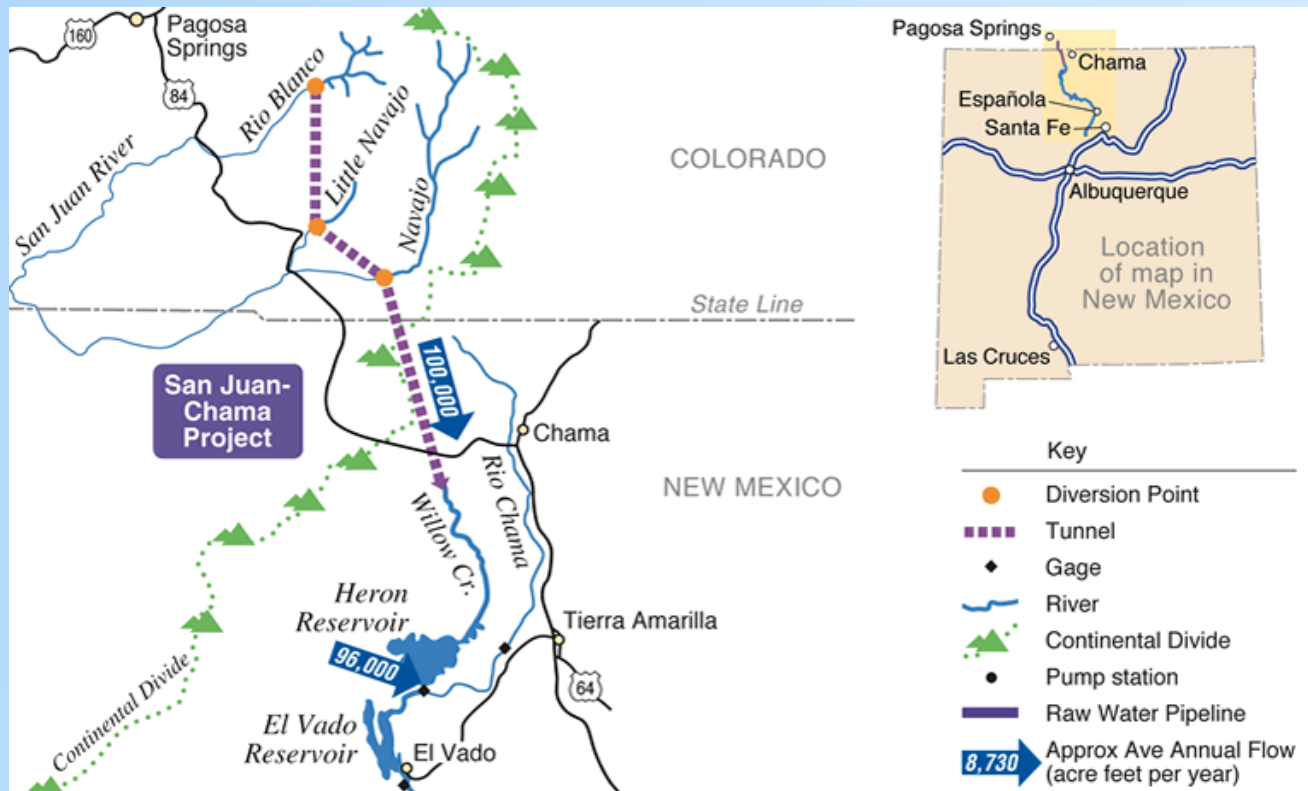


Water Resources Planning & Development in Santa Fe



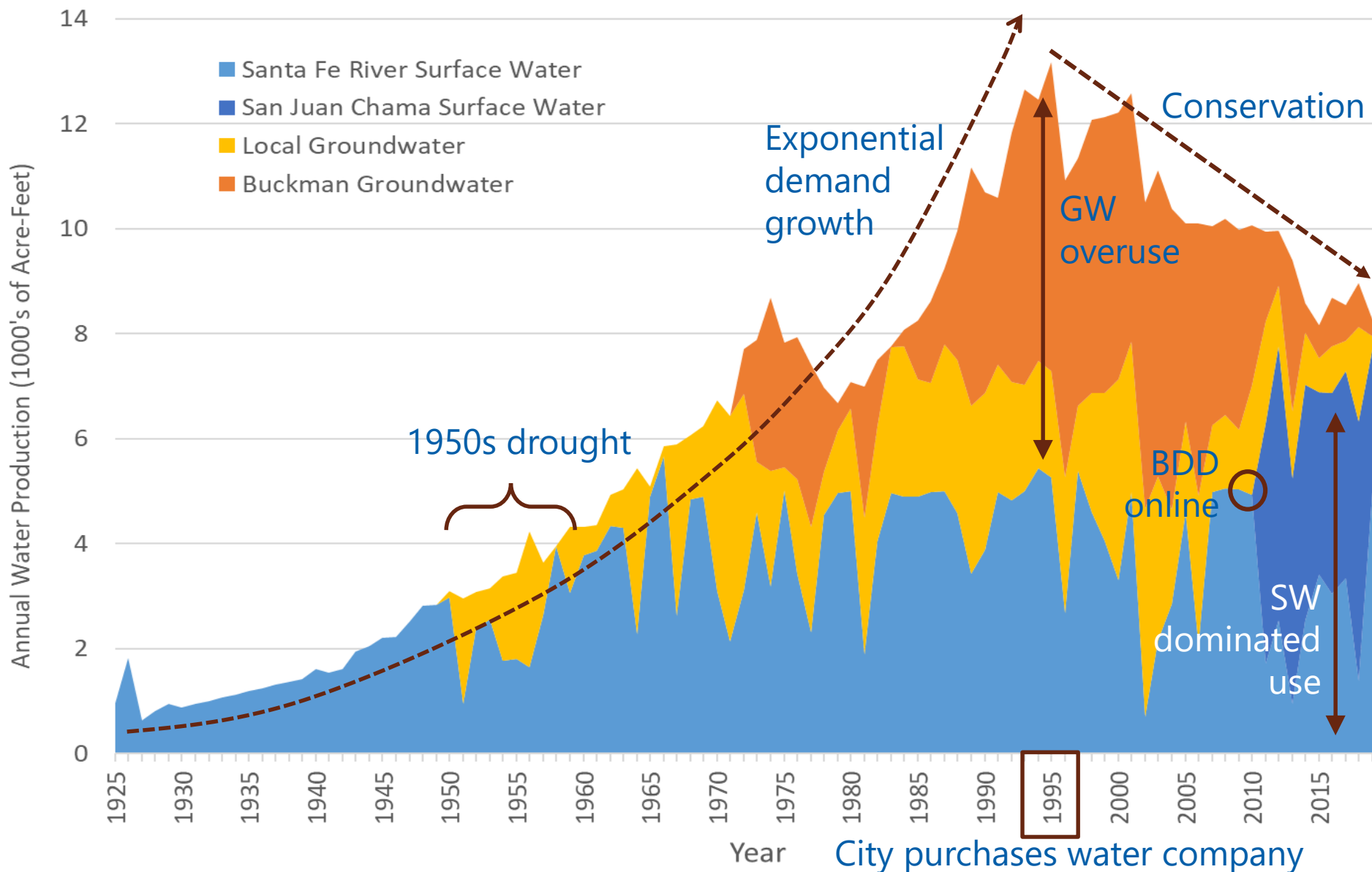
San Juan Chama (SJC) Water

- Portion of New Mexico's share of Colorado River water under the Colorado River Compact
- Approximately 100,000 acre-feet per year (AF/yr) average target diversion from Blanco, Little Navajo, and Navajo tributaries to the San Juan, gravity flow through tunnels into Chama system.
- City and County full allocation of 5605 AF/yr

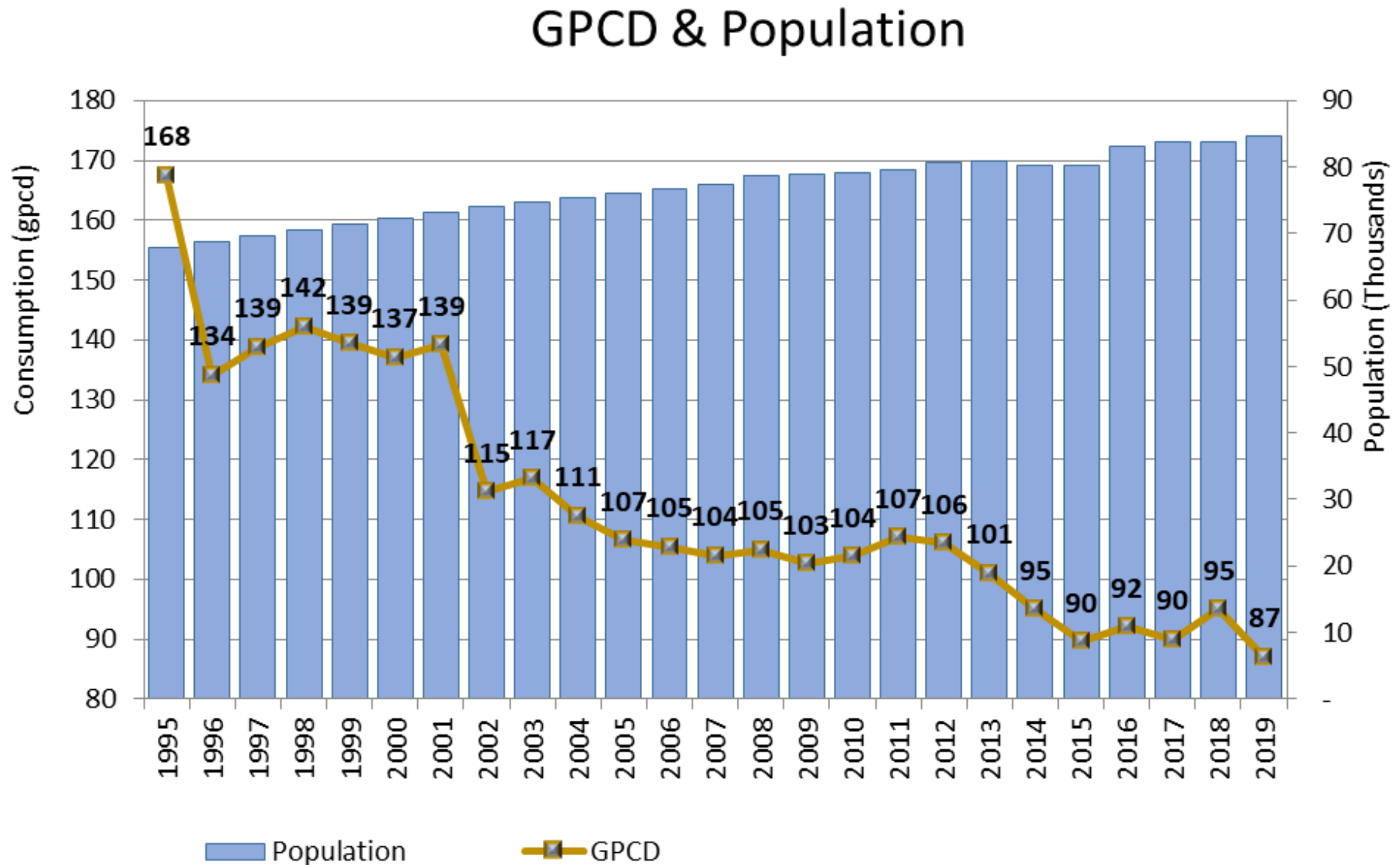


City Historical Supply & Demand

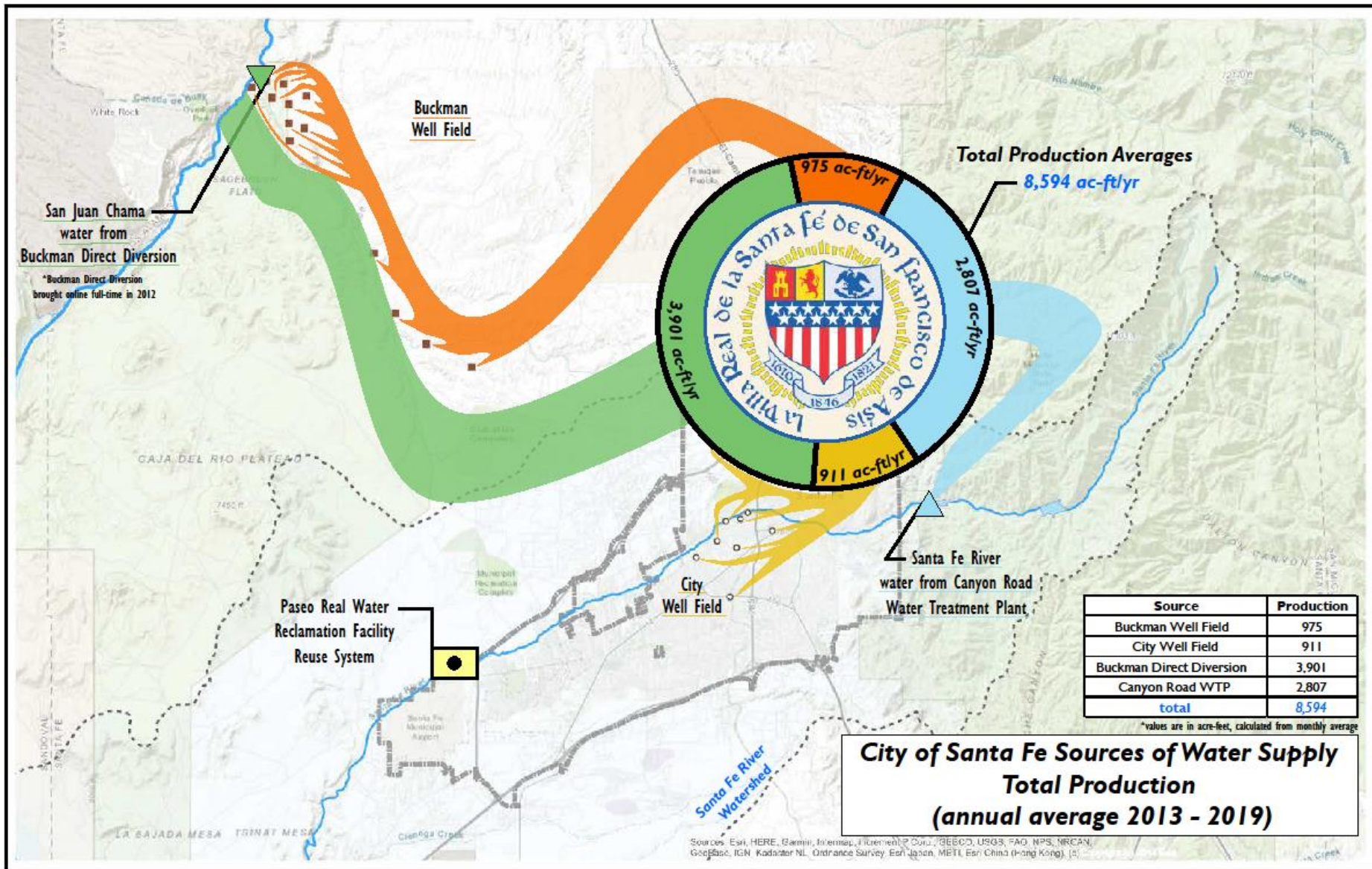
City of Santa Fe Annual Water Production by Source 1925 - 2019



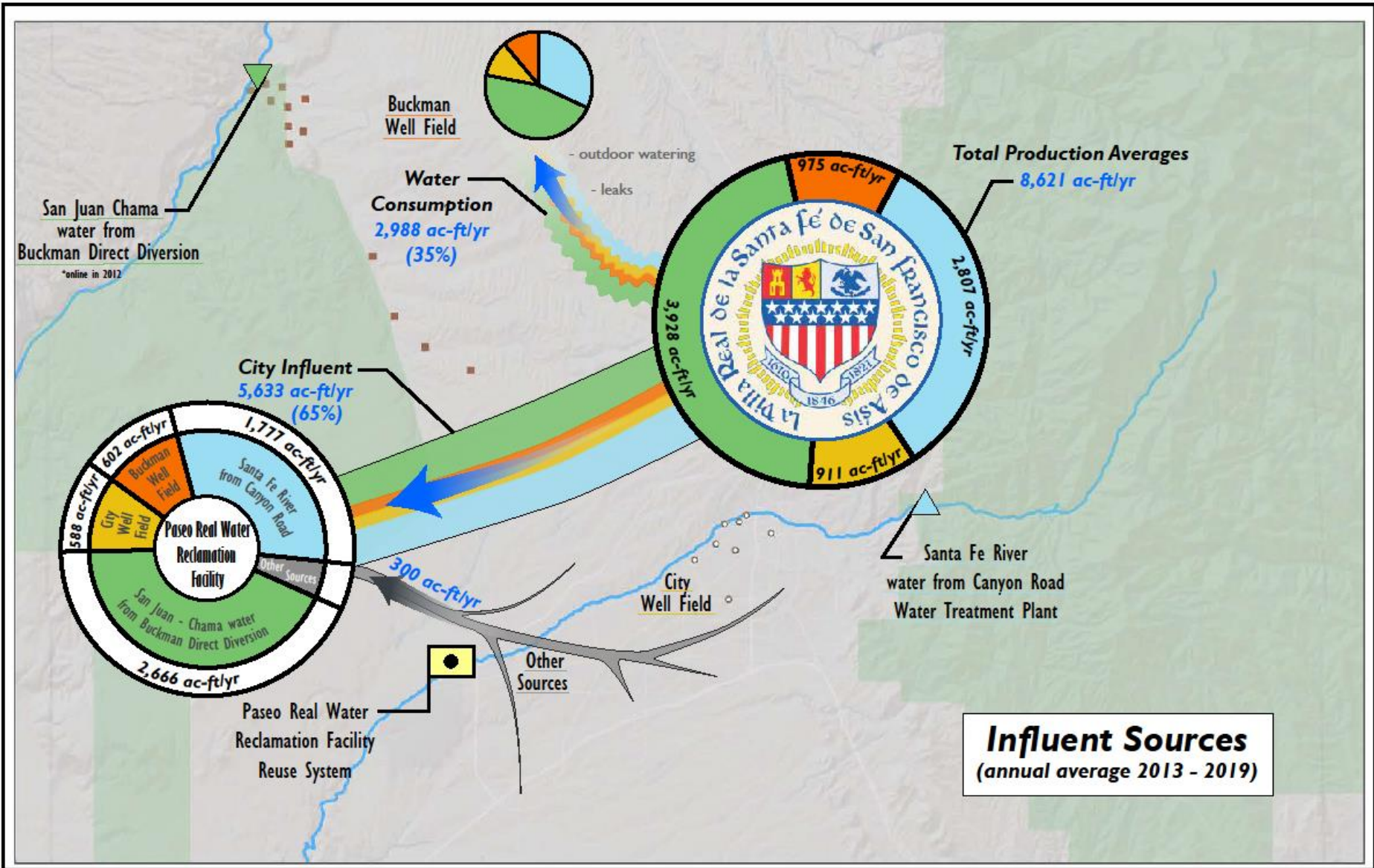
City Population & Per Capita Water Use



2013-2019 City Water Use

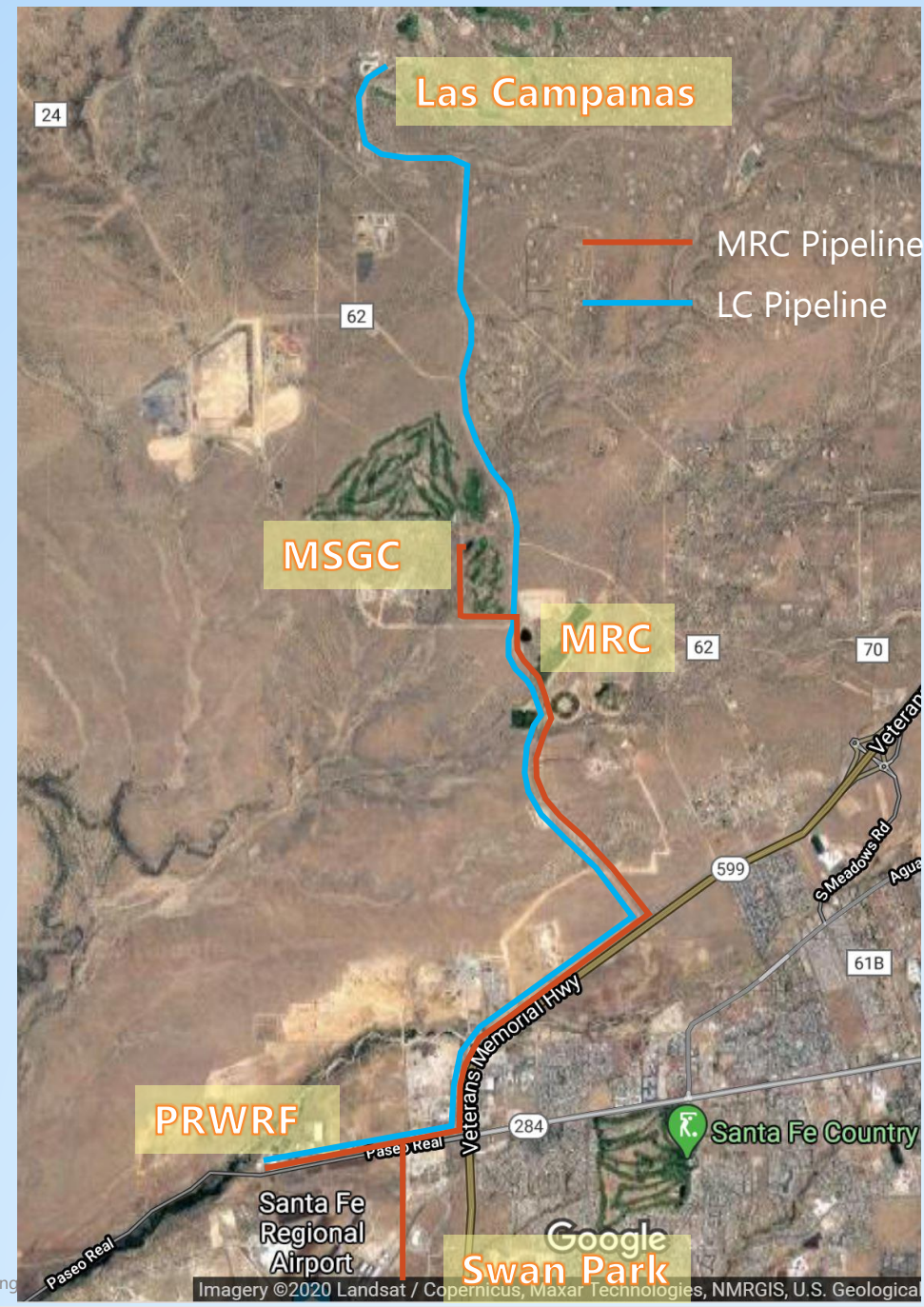


2013-2019 Flows to WWTP (influent)

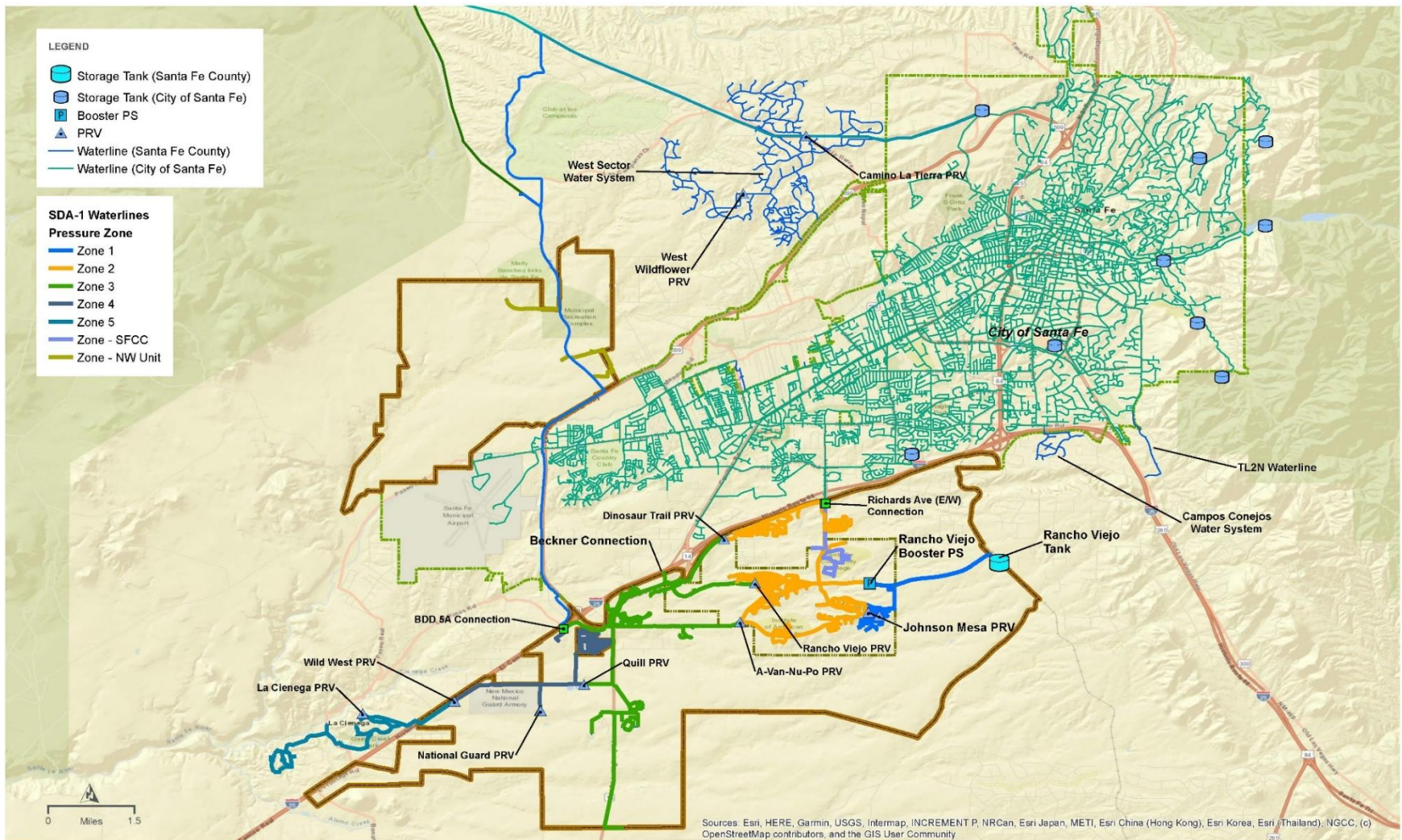


Non-Potable Reuse (purple pipe)

- Effluent is used for turf irrigation at
 - Swan Park
 - Santa Fe Country Club
 - MRC
 - Marty Sanchez
- ~1270 AF/yr 2013-2019
- Could also be delivered to Las Campanas



County Utility Service Area



WWW UTILITY MASTER PLAN
EXISTING WATER SYSTEM - OVERALL MAP

FIGURE 3-1

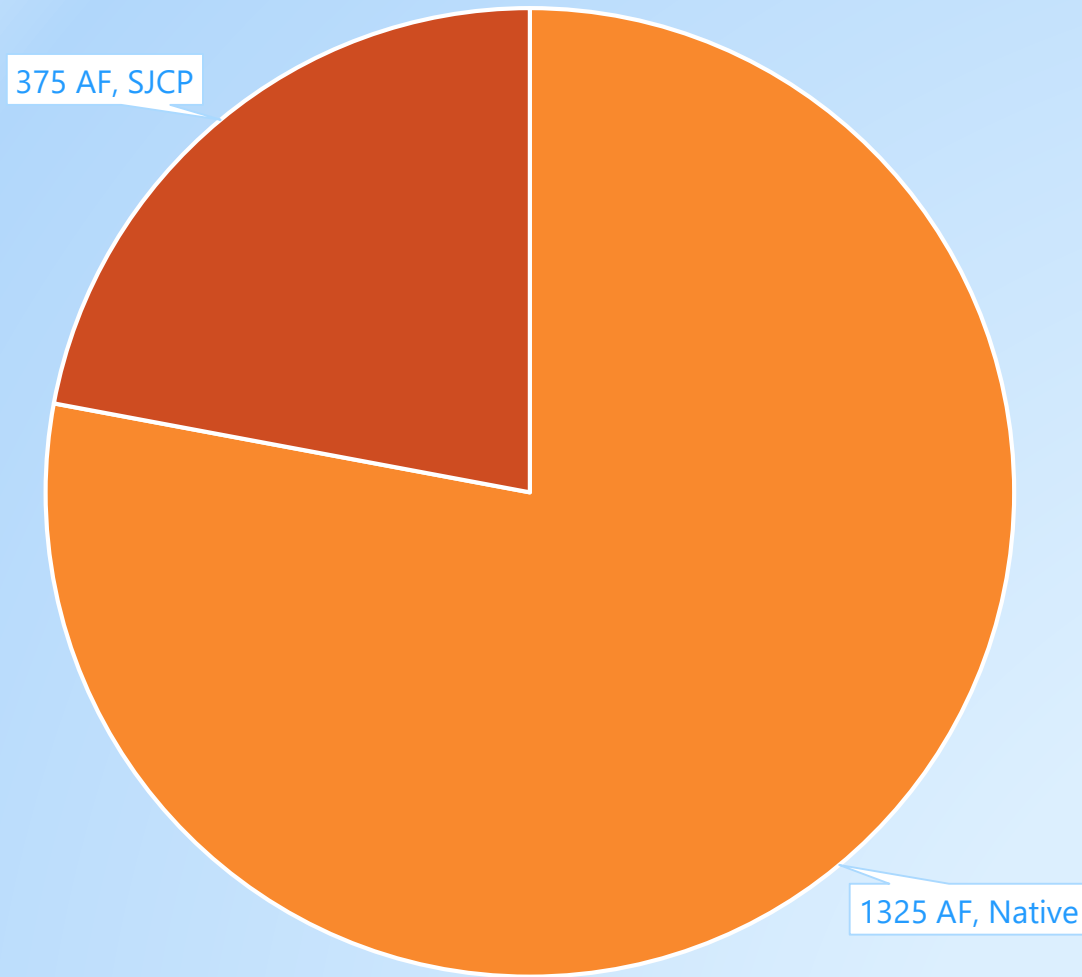
WATER AND WASTEWATER UTILITY MASTER PLAN FOR SDA-1

- Hyde Park Estates
- Cañoncito-Eldorado
- Pojoaque Basin

Regional Water System

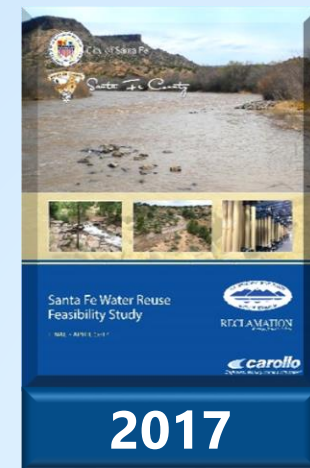
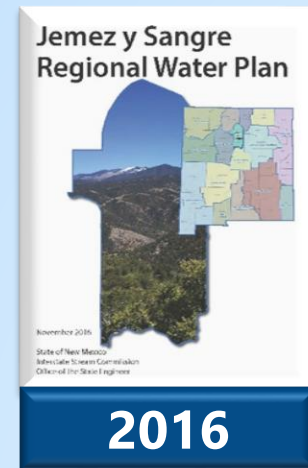
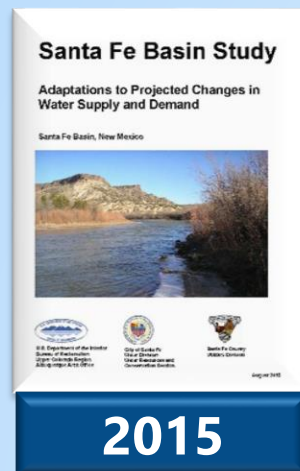
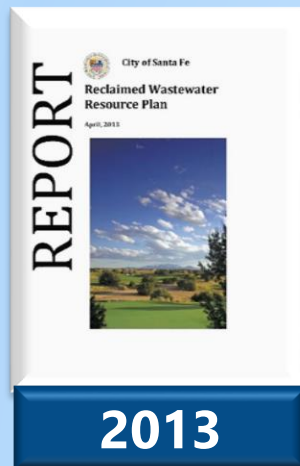
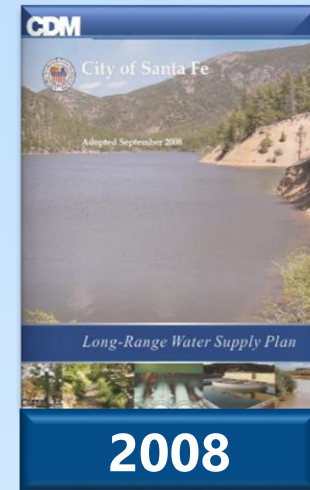
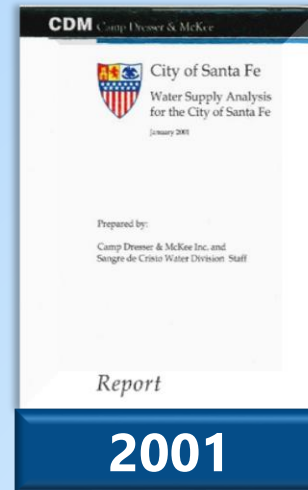
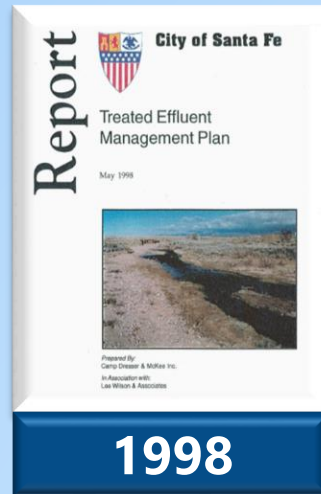
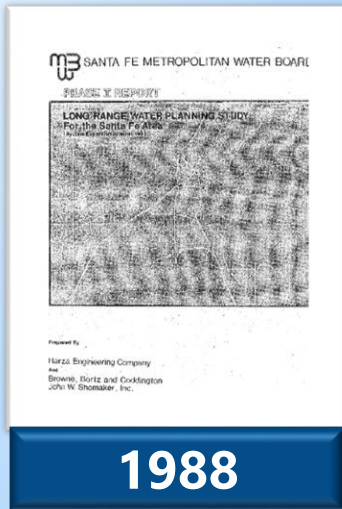


County Sources of Supply at BDD



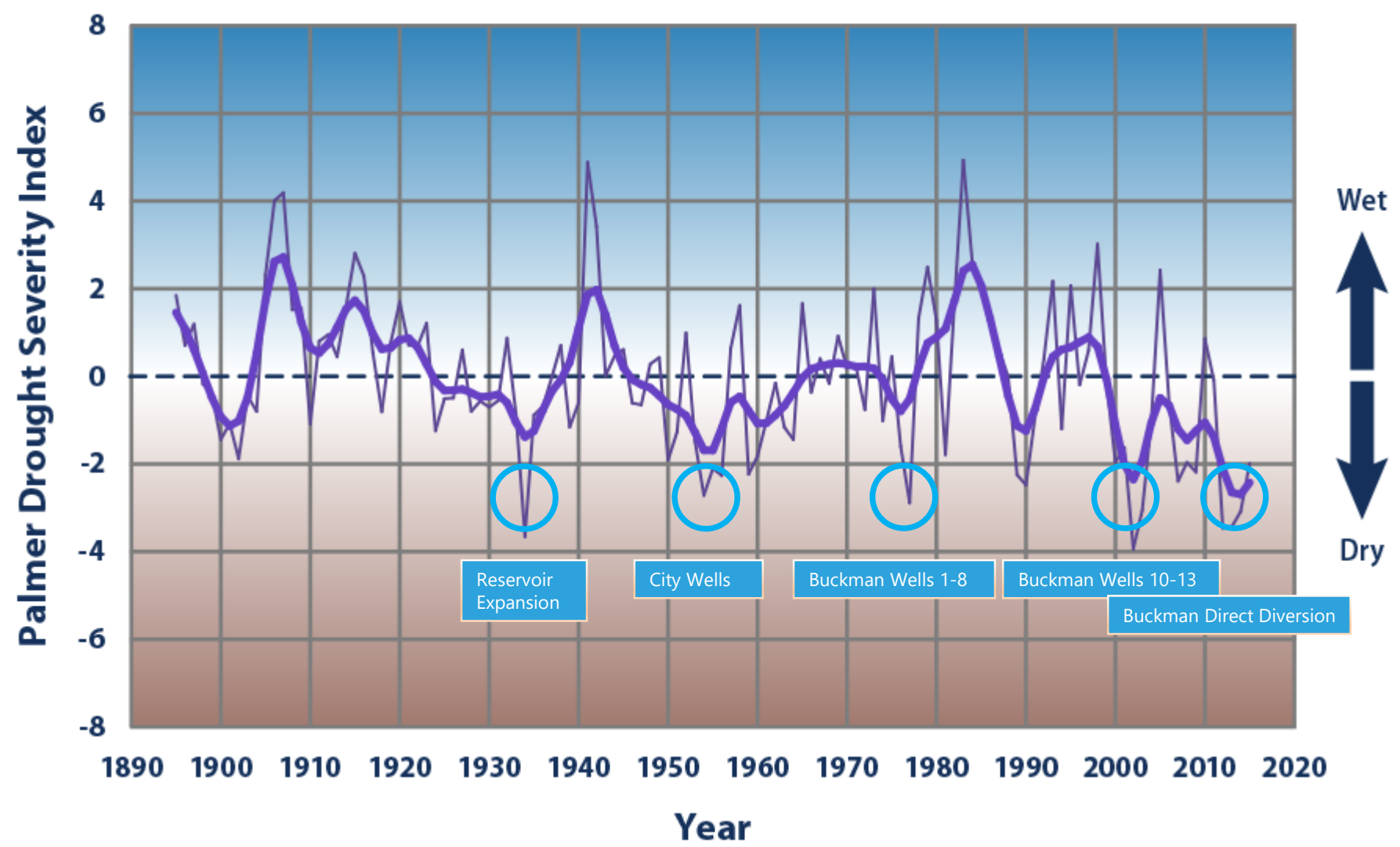
Native SJCP

30 Years of Santa Fe Water Planning



Can we get out in front of the next shortage?

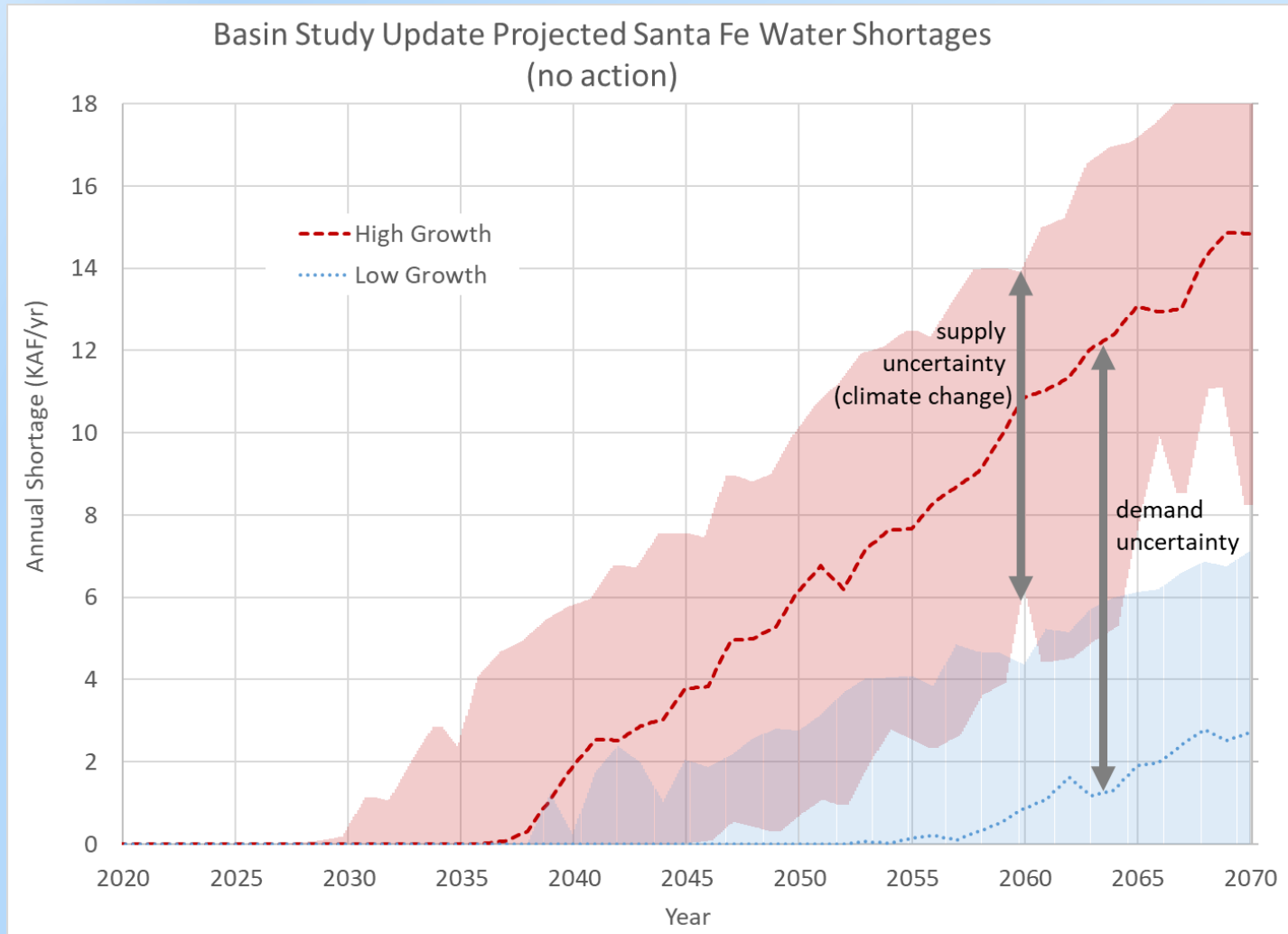
Drought Severity in the Southwestern United States, 1895–2015



Most recent planning efforts

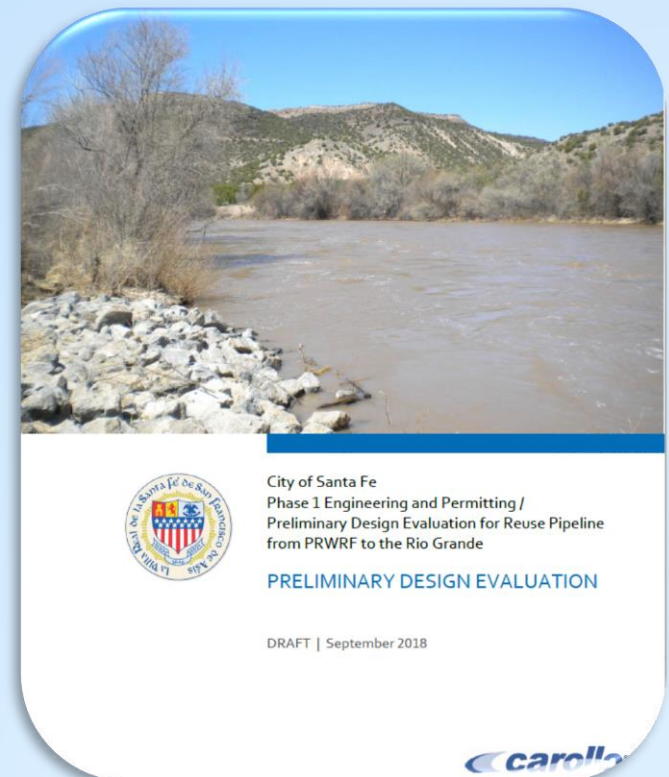
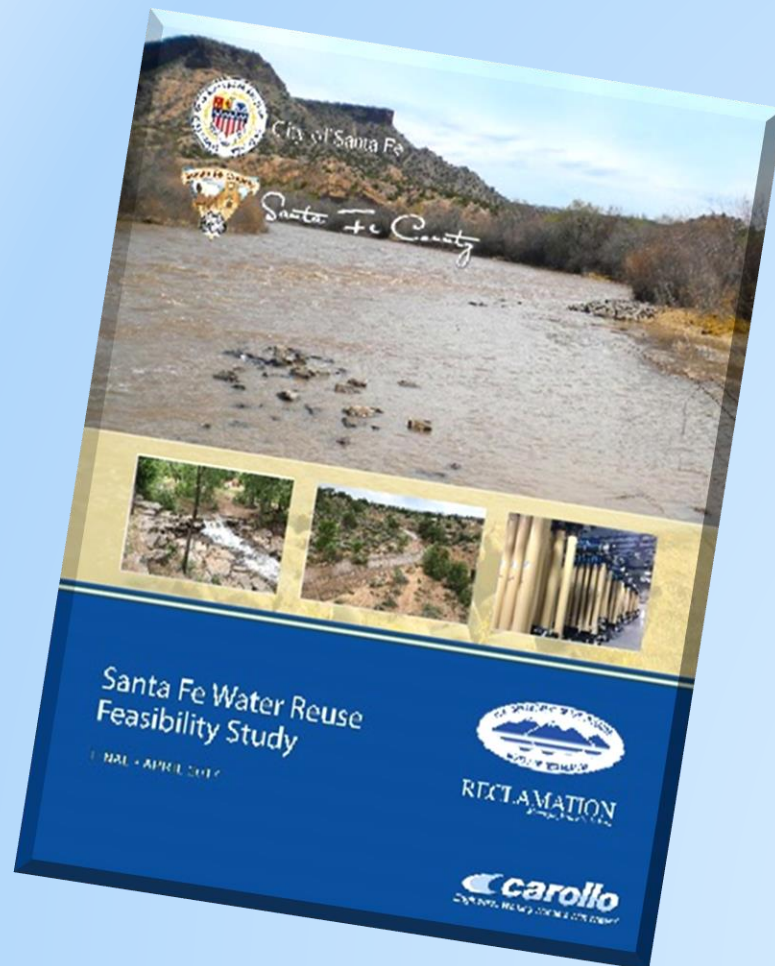
Santa Fe Basin Study and Basin Study Update:

- Growing demand & less reliable supply will lead to shortages
- Best way to avoid these shortages is more efficient use of effluent



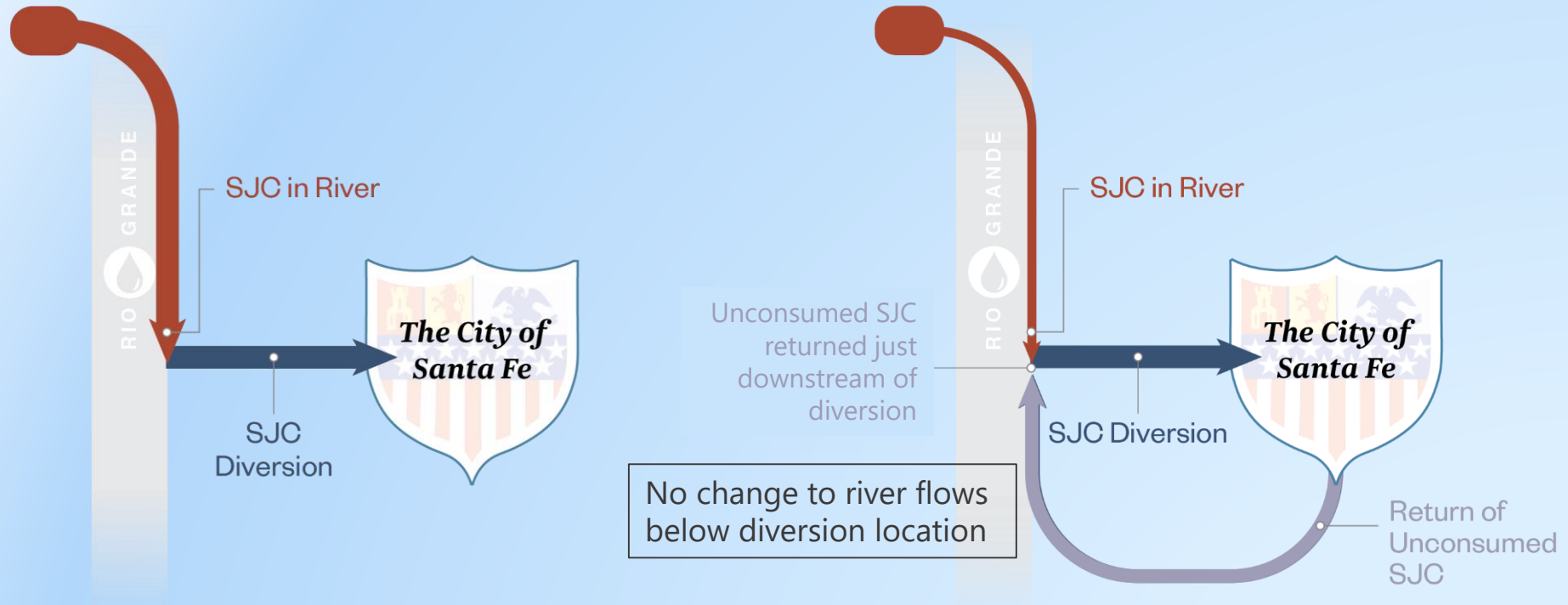
Current focus: SJC return flow pipeline

Returning water originating from the BDD to the Rio Grande was contemplated in the original BDD design, and was identified in the last round of planning as the preferred alternative for using effluent to increase our water supply.



Current City focus: SJC return flow pipeline

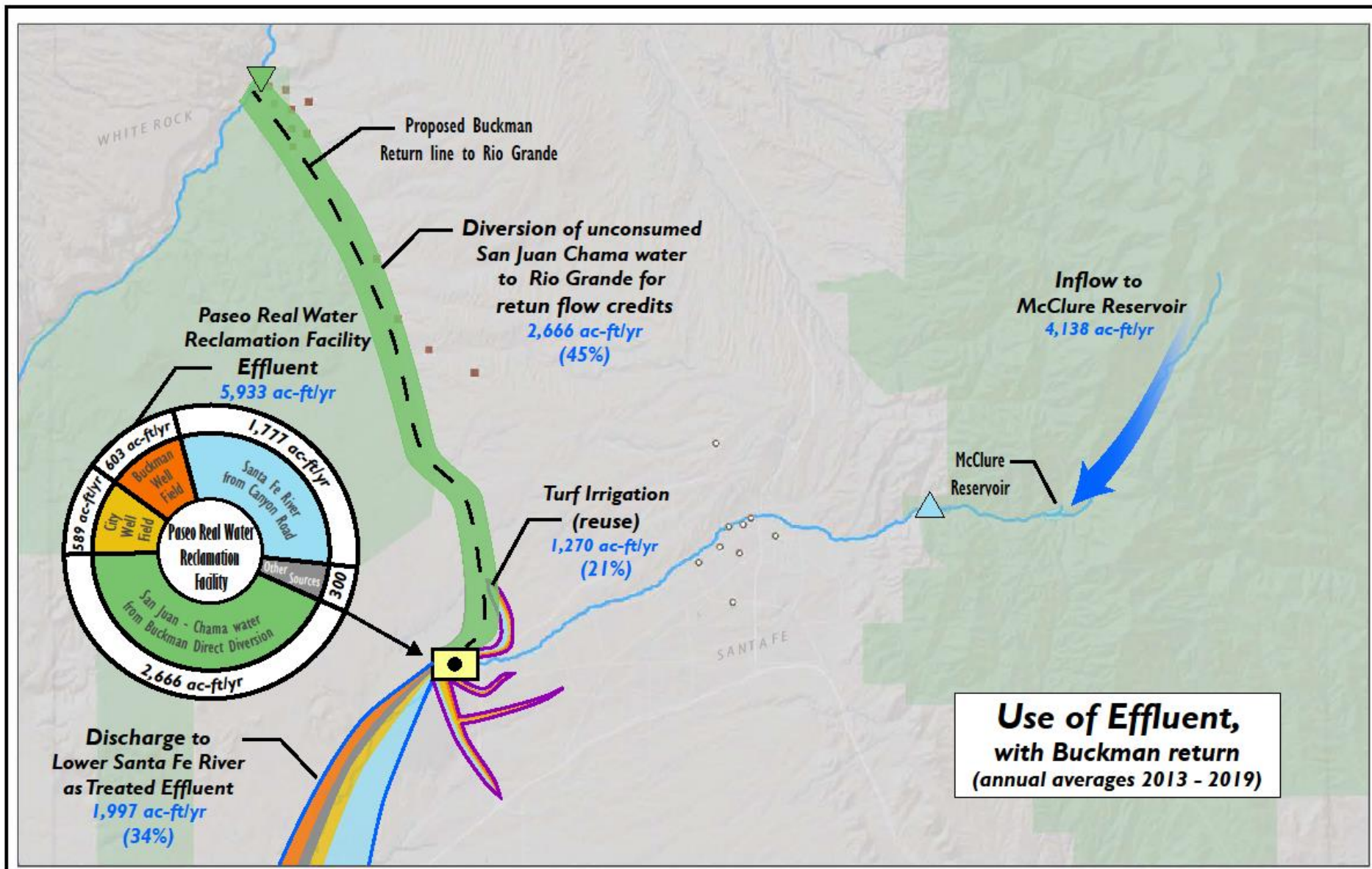
Goal: Achieve full consumption of SJC water by getting credit for returning unconsumed SJC water (we get no credit for discharge to lower Santa Fe River) to the Rio Grande.



Current: all diversions at BDD from upstream reservoir releases

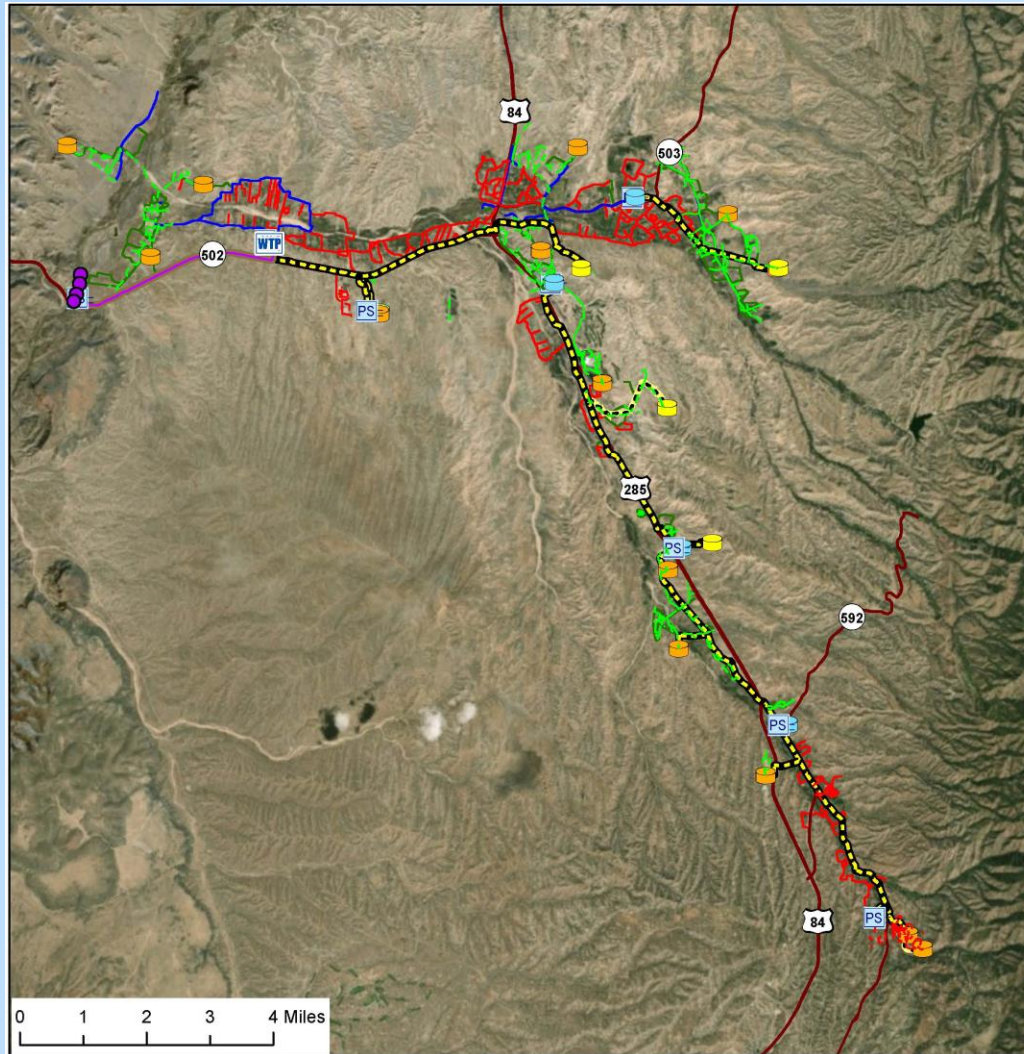
With pipeline: same diversions at BDD with less release from upstream reservoirs. River "made whole" with effluent return.

Current City focus: SJC return flow pipeline



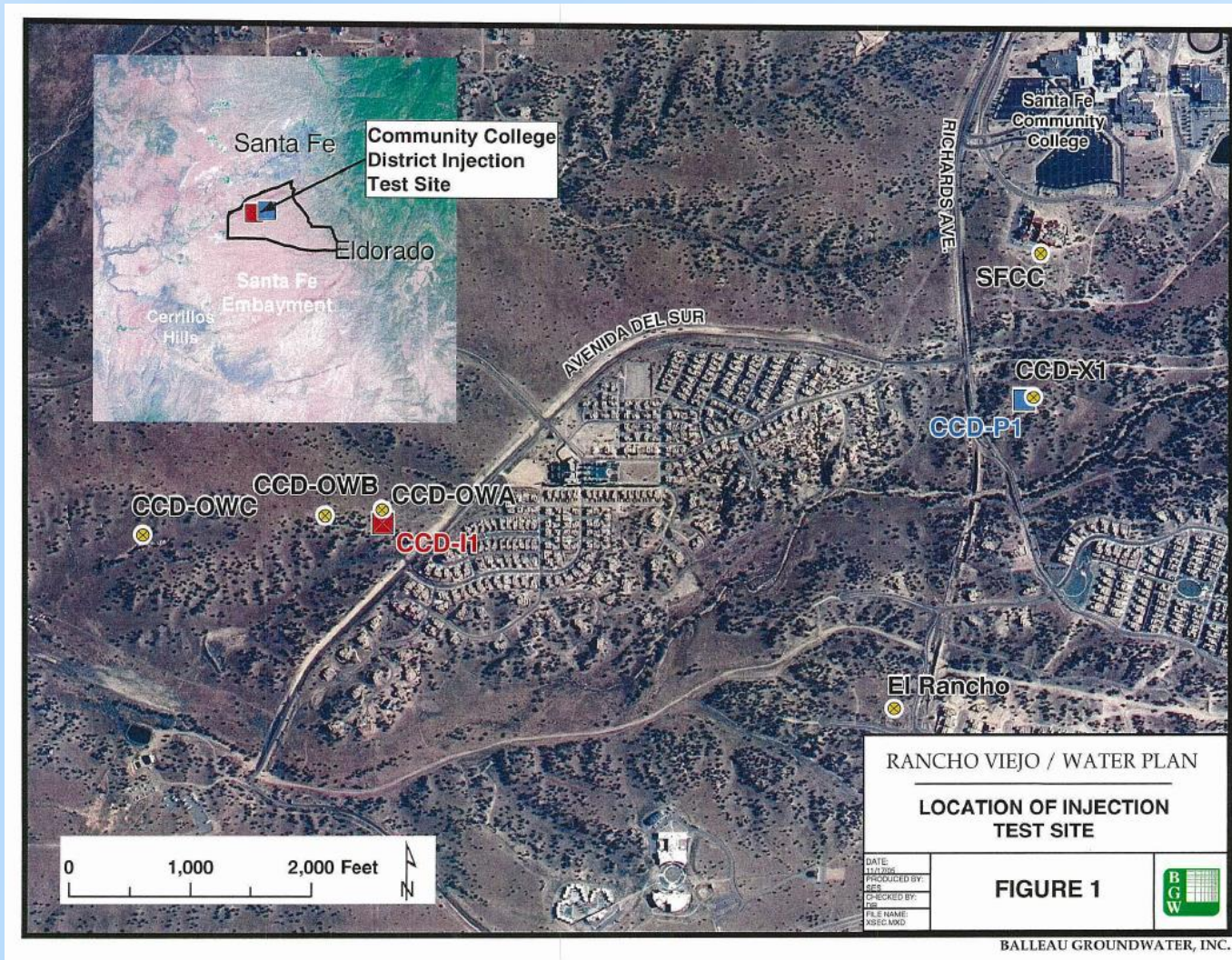
Current County Focus: PBRWS

Pojoaque Basin Regional Water System



Current County Focus: ASR

Rancho Viejo Aquifer Storage and Recovery



Questions?

- Post your questions with the Q&A feature
- If you want to ask your question verbally, raise your hand
- Q&A questions will be answered first and verbal questions as time allows

