

Figure 4-19: Monterey Drive Improvement Area

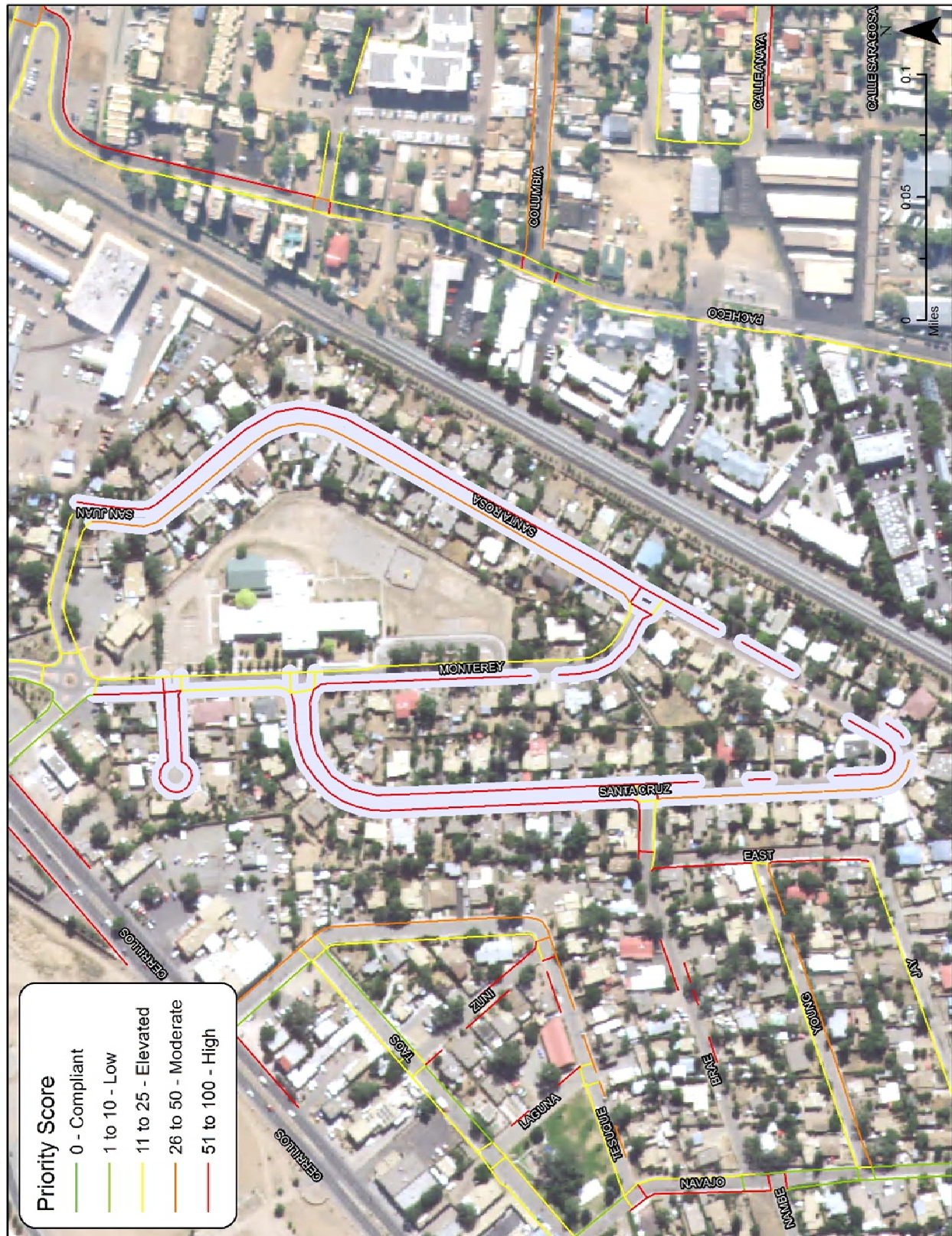
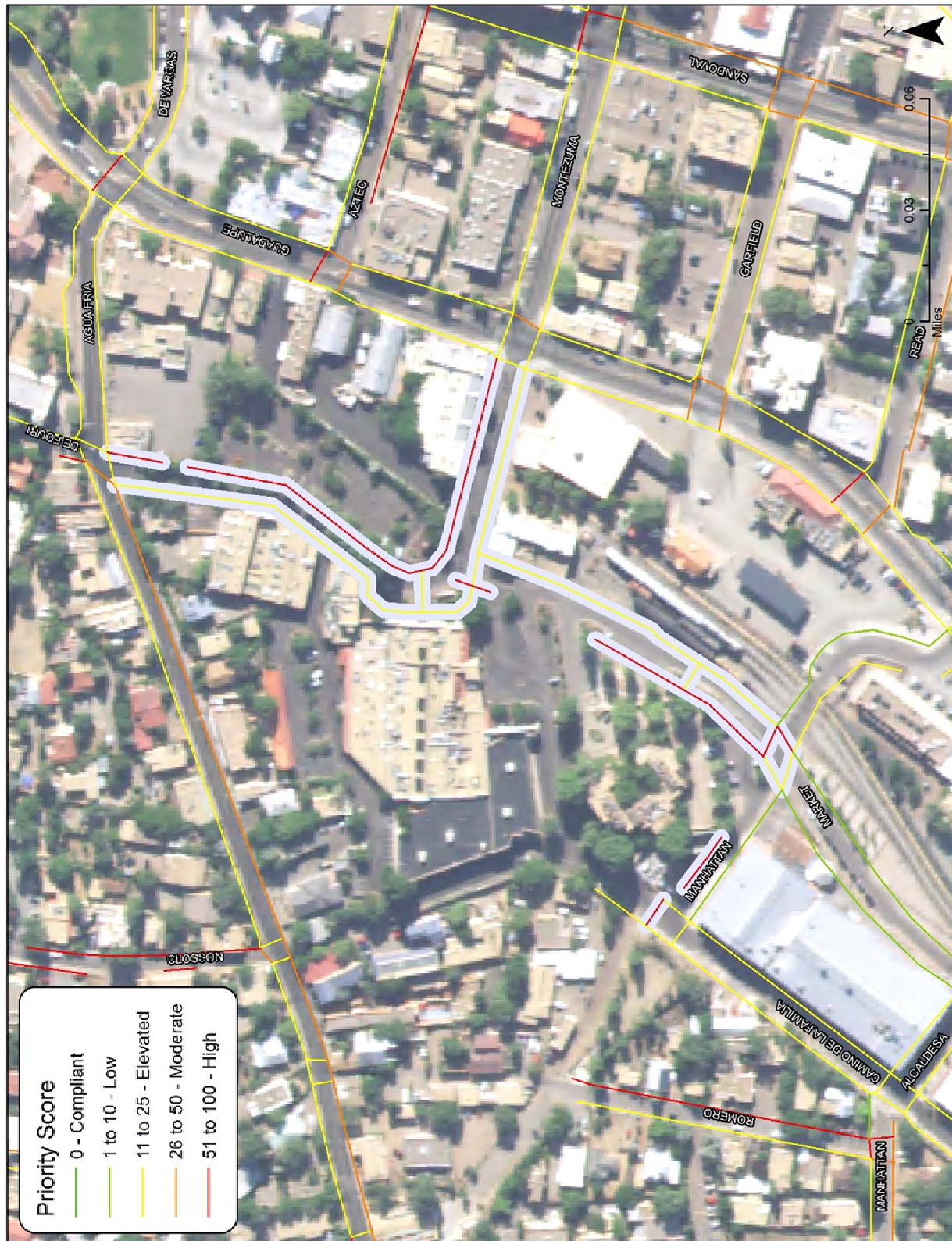


Figure 4-20: Manhattan Avenue, Market Street and Montezuma Avenue Improvement Area

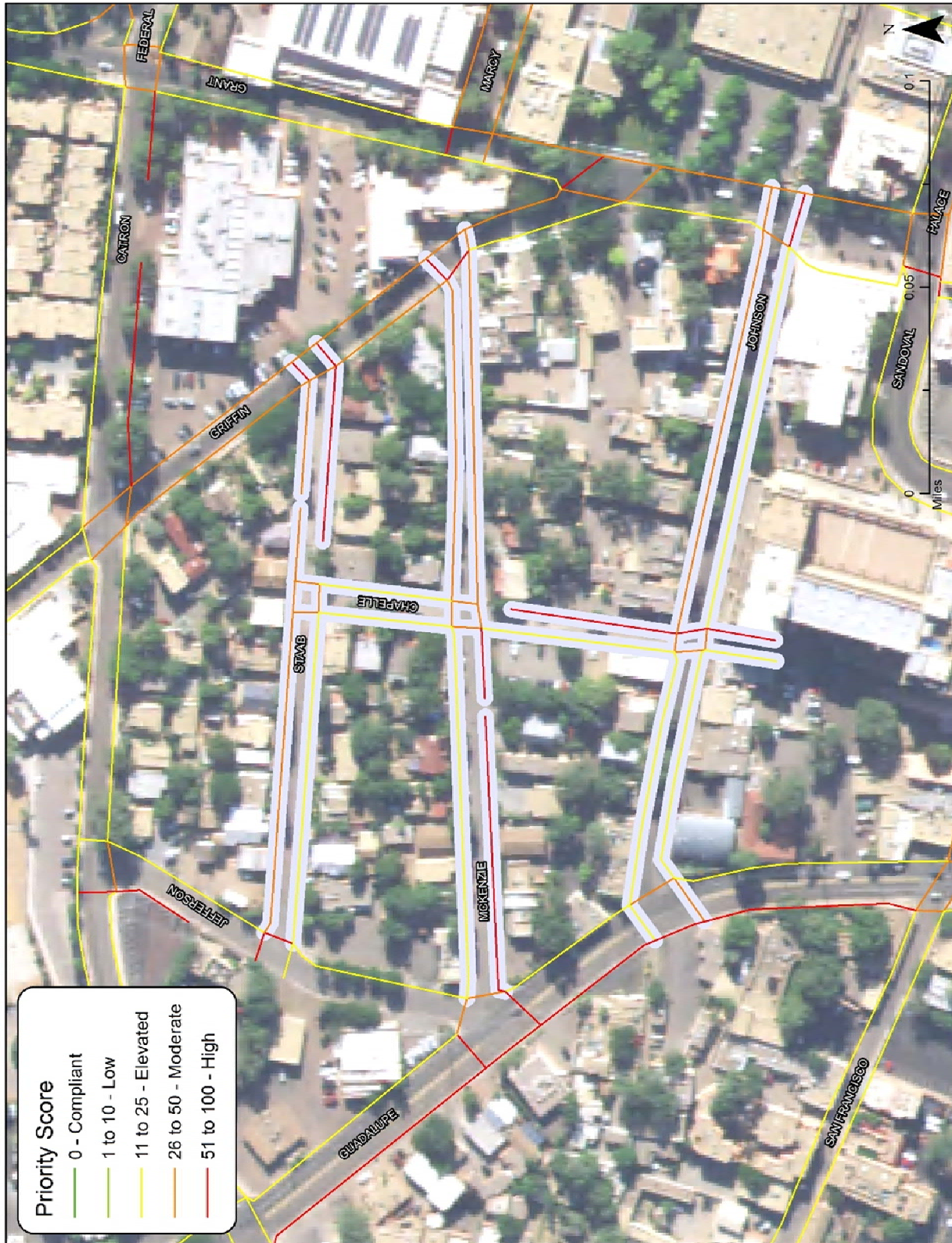


Priority #10: Chapelle Street, Johnson Street, McKenzie Street and Staab Street

Chapelle Street and the intersecting streets of Johnson Street, McKenzie Street, and Staab Street make up a small residential area in the heart of downtown Santa Fe. As the downtown area grows, a number of businesses have developed along Guadalupe Street. This small downtown neighborhood is becoming a link between downtown destinations and the newly developing areas along Guadalupe Street. This improvement area can be seen in Figure 4-21.

This area presents a number of accessibility challenges in missing curb ramps, a large number of obstructions, cross slope issues and surface obstructions. Intersection improvements should also be made to crossings on Guadalupe Street and Griffin Street.

Estimated Cost: \$315,000+



This page intentionally left blank