

## District 1

District 1 has the highest percentage of high priority assets at 19%. District 1 also has the highest percentage of elevated priority assets, 39%. Figure 4-3 provides the complete prioritization breakdown. The district encompasses large portions of the historic downtown area and surrounding suburbs. Many sidewalks and curb ramps within this district are relatively old in comparison to the rest of the city. Many issues found in District 1 include narrow sidewalks (less than 48 inches wide), non-continuous sidewalks, and obstructions.

High priority areas are located across the district. Some notable areas include Agua Fria Street, E. Alameda Street and Cerrillos Road. Many neighborhoods also have high priority areas. These areas can be seen in greater detail in Figure 4-4.

**Figure 4-3: District 1 Prioritization Scoring**

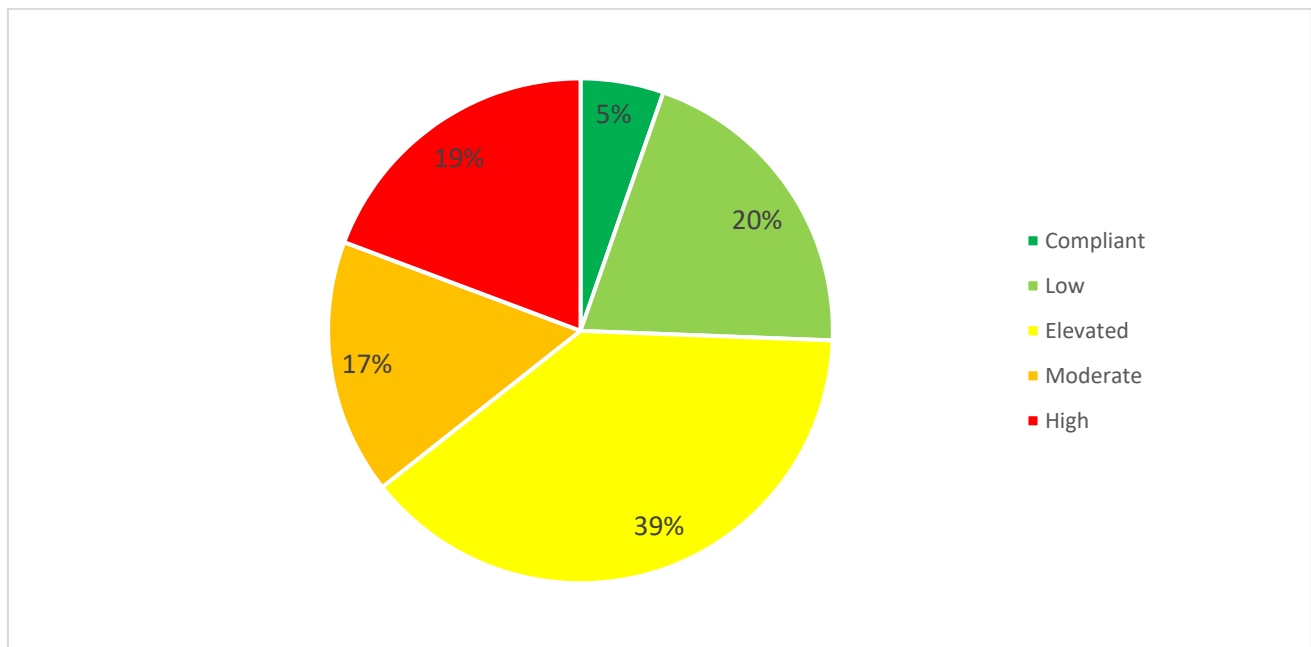
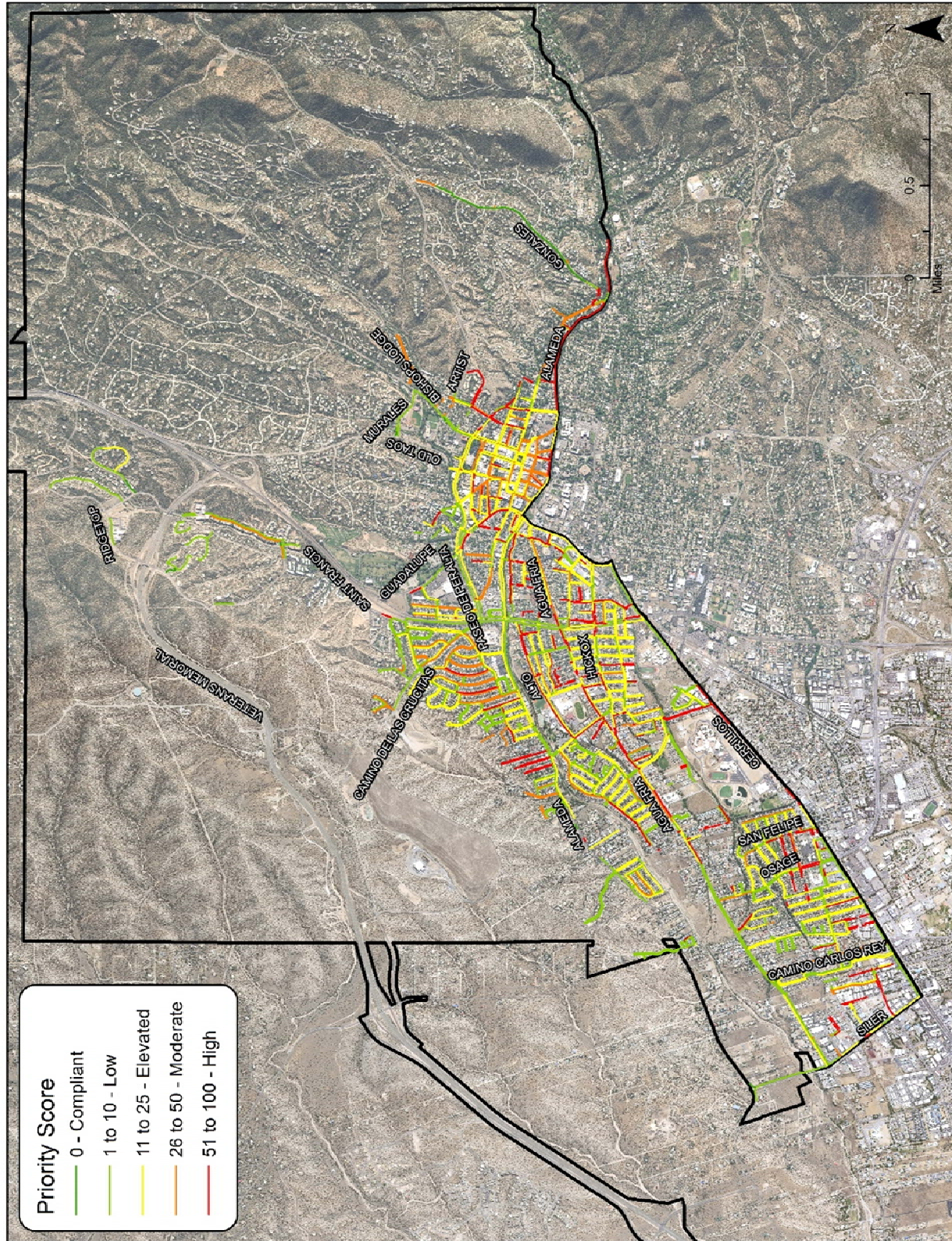




Figure 4-4: District 1 Prioritization



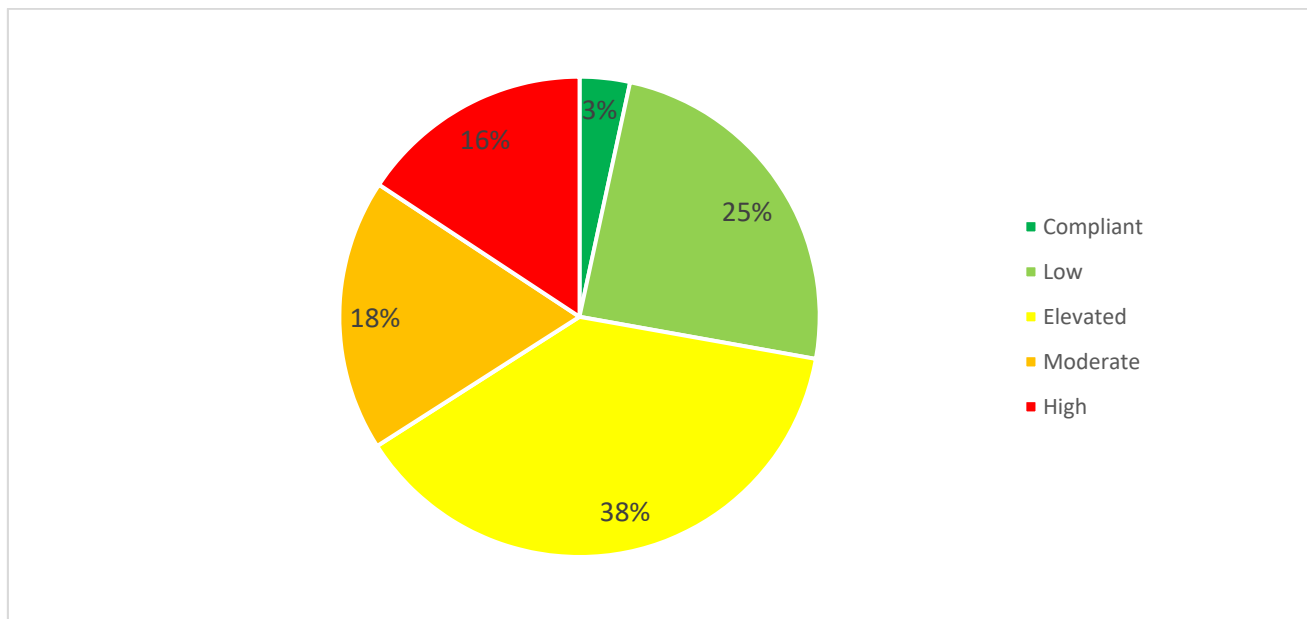


## District 2

District 2 makes up the southern portion of downtown and surrounding suburbs. Overall the condition of pedestrian assets in District 2 is mid-range. The district contains the highest percentage of moderate priority areas with 18%. As seen in Figure 4-5, high priority assets make up 16% of the total. Similar to District 1, this district also features older curb ramps and sidewalks which have deteriorated over time. As seen in Figure 4-6, many of the streets in District 2 do not contain curb ramps or sidewalks.

High priority areas in District 2 include Alta Vista Street, Canyon Road, and Cerrillos Road. Many neighborhoods close to downtown and along Cerrillos Road also contain high priority areas.

**Figure 4-5: District 2 Prioritization Scoring**





Downloaded from <http://ajphaphysocpharm.sagepub.com/> at 11:06 11 November 2014

