



Agenda

DATE 2/19/13 TIME 8:47a

FILED BY Terrie Rodriguez

RECEIVED BY [Signature]

## LEAD Task Force

**Monday, February 25, 2013**

**Santa Fe Community Convention Center, Nambe Room**

**201 West Marcy**

**4:00pm-6:00 p.m.**

1. Call to Order – Chairperson Emily Kaltenbach
2. Approval of Agenda
3. Approval of Minutes
4. New Business: Continued facilitated discussion/mapping of model - Eligibility; Treatment; Process; Funding (each sub-committee to present the essential portions for the model)
5. Next Meeting – February 25, 2013
6. Adjournment

**Persons with disabilities in need of accommodations, contact the  
City Clerk's Office at 955-6512, five (5) working days prior to meeting date.**

**Index Summary of Minutes  
LEAD Task Force  
February 25, 2013**

<b><u>INDEX</u></b>	<b><u>ACTION TAKEN</u></b>	<b><u>PAGE(S)</u></b>
<b>Cover Sheet</b>		<b>1</b>
<b>Call to Order</b>	<b>The meeting was called to order at 4:00 pm by the Chair. Meeting was held in the Nambe Room, Santa Fe Convention Center.</b>	<b>2</b>
<b>Roll Call</b>	<b>A quorum was established by sign in roll call.</b>	<b>2</b>
<b>Approval of Agenda Changes: Next meeting changed from February 25, 2013 to March 25, 2013.</b>	<i>Ms. Brown moved to approve the agenda as amended, second by Ms. Ansheles, motion carried by unanimous voice vote.</i>	<b>2</b>
<b>Approval of Minutes</b>	<i>Mr. Kopelman moved to approve the minutes as presented, second by Ms. Picard, motion carried by unanimous voice vote.</i>	<b>2</b>
<b>New Business 1. Updates from Sub-Committees Harm Reduction/Treatment Legal/Eligibility Model/Process Funding/Cost Analysis</b>	<b><i>Break Out Sessions and Recommendations Discussed</i></b>	<b>3-4</b>
<b>Next Meeting</b>	<b><i>March 25, 22013</i></b>	<b>4</b>
<b>Adjournment</b>	<b><i>The meeting was adjourned at 6:15 pm</i></b>	<b>4</b>
<b>Note: Sign in may be modified when sign in sheets are provided to stenographer.</b>		<b>4</b>

**LEAD TASK FORCE  
MINUTES  
MONDAY – FEBRUARY 25, 2013  
NAMBE CONFERENCE ROOM  
SANTA FE, NEW MEXICO  
4:00 PM – 6:00 PM**

**1. Call to order**

The meeting of the LEAD Task Force was called to order by the Chair, Emily Kaltenbach at 4:05 pm in the Nambe Room of the Convention Center, Santa Fe, New Mexico. A quorum did exist by roll call.

**Roll Call**

**Present:**

Emily Kaltenbach, Chair  
Mayor David Coss  
Councilor Patti Bushee  
Thom Allena  
Cathy Ansheles  
Steve Kopelman  
Laura Brown  
Yolanda Briscoe  
Jeneen Lujan  
Jessica Dimas  
Sgt. Jerome Sanchez  
Krishna Picard  
Bennett Bauer  
Maria Jose Rodriguez Cadiz  
Kevin Gallegos, Rio Arriba DWI  
Louise Sanchez, Rio Arriba DWI

**Others Present:**

Mark Boschelli

Brian Burns, Santa Fe Community  
Foundation  
Christs Coggins  
Johee Rand, Consultant  
Fran Lucero, Stenographer

**Excused/Not Present**

Kathy Armijo-Etre, Excused  
Raye Byford, Excused  
Yolanda Briscoe, Excused  
Pablo Sedillo, Excused  
Bill Dimas  
Eric Garcia  
George L. Ortiz  
Jayde Archuleta  
Kate Ferlic  
Ken Johnson  
Marcela Diaz

**Staff Present:**

Terrie Rodriguez, Staff Liaison

**2. The Chair outlined the order of business. Break out in to respective groups for 30 minutes. Role of the task force is to give the high level recommendations; more detail will follow under Phase II.**

**3. Approval of Agenda**

Correct the date of next meeting from February 25, 2013 to March 25, 2013

*Ms. Brown moved to approve the agenda as amended, second by Ms. Ansheles, motion carried by unanimous voice vote.*

**4. Approval of Minutes**

*Mr. Kopelman moved to approve the minutes as presented, second by Ms. Picard, motion carried by unanimous voice vote.*

## **5. New Business**

Continued facilitated discussion/mapping of model – Eligibility, Treatment; Process; Funding (each sub-committee to present the essential portions for the model).

**<30 Minutes>**

The Chair noted that whatever was agreed upon at today's meeting would be sent to all for review and she would like to receive back any comments.

First Presentation: LEAD COST BENEFIT ANALYSIS (EXHIBIT A) –  
Joohee Rand, Consultant

Second Presentation: LEAD PROCESS RECOMMENDATIONS (Presented as an overhead by  
Sgt. Jerome Sanchez – a document is on file with the Staff Liaison).

Follow Up: Sgt. Sanchez will research the Records Retention law for this type of services to assure that security and HIPPA are met.

Sgt. Sanchez asked the members if they would agree to pick the place instead of naming a specific place, all were in agreement with this change to the process.

Additional research will be needed to learn of the liability factor from medical clearance/release. Seattle will allow them to walk away from their treatment plan. Q: How many times is their threshold?

Ms. Picard recommended a future meeting to discuss Intake. She also stated that those in the legal and law enforcement field would like to talk to those in Seattle.

Third Presentation: RECOMMENDATIONS – Emily Kaltenbach, Chair

### **TREATMENT WORK GROUP RECOMMENDATIONS:**

- **ASSESSMENT – DETERMINATION OF LEVEL OF CARE**
- **ICP (INDIVIDUALIZED CARE PLAN) IEP MODEL**
- **ASSERTIVE CASE MANAGEMENT**
- **MEDICATION ASSISTED TREATMENT (SUBOXONE/METHADONE)**
  - **METHADONE IS NOT ON TASK FORCE – RECOMMEND INVITING THEM TO ATTEND**
  - **MORE ADDICTION TREATMENT PROVIDERS**
- **SOBER HOUSING (NEED ADDITIONAL HOUSING OPTIONS)**
- **DETOX/SOBERING (NEED FOR ADDITIONAL SERVICES)**
- **COORDINATION WITH PROBATION/PAROL/DRUG COURT**
- **PRIMARY CARE SERVICES**
  - **MAKE SURE EVERY LEAD PARTICIPANT HAS A MEDICAL HOME**
- **GROUP THERAPY & OTHER OUTPATIENT SERVICES**
  - **NEED FOR ADDITIONAL IOP (INPATIENT OUTPATIENT)**
- **CASE REVIEW/ONGOING CONTACT**
  - **DAILY CLINICAL MEETING**
  - **ANOTHER MEETING W/ LEAD OFFICER AND CM – WEEKLY**
  - **COORDINATE WITH SOS/SVH OPIATE TREATMENT GROUPS**

- **HARM REDUCTION – NALOXONE & SYRINGE EXCHANGE (EDUCATION OR ID ON ICP)**
- **WRAP AROUND SERVICES (?)**
  - **EDUCATION**
  - **TRANSPORTATION**
  - **JOB TRAINING (HARM REDUCTION PRINCIPLE)**
  - **HOUSING**
  - **MENTORING**
  - **FOOD**
  - **TRAUMA TREATMENT**

The members were asked to begin thinking about who they should send to Seattle for future discussion. It was recommended that someone from Law Enforcement definitely be a candidate to go to Seattle.

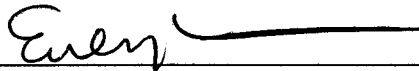
**6. Next Meeting - March 25, 2013**

The next meeting will be a panel discussion. The Chair advised that Mr. Sedillo has offered the jail facility to hold this meeting. Community members who might fall under the discussed categories will be invited to participate. There are individuals who have already been identified to attend.

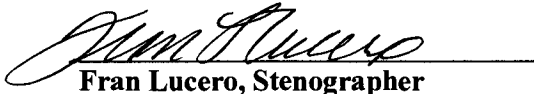
**7. Adjournment**

There being no further business to come before the LEAD Task Force, the meeting was adjourned at 6:15 pm.

**Signature Page:**



**Emily Kaltenbach, Chair**



**Fran Lucero, Stenographer**

# LEAD COST BENEFIT ANALYSIS

---



## **Cost Benefit Analysis Framework - Initial Discussions**

February 25, 2013

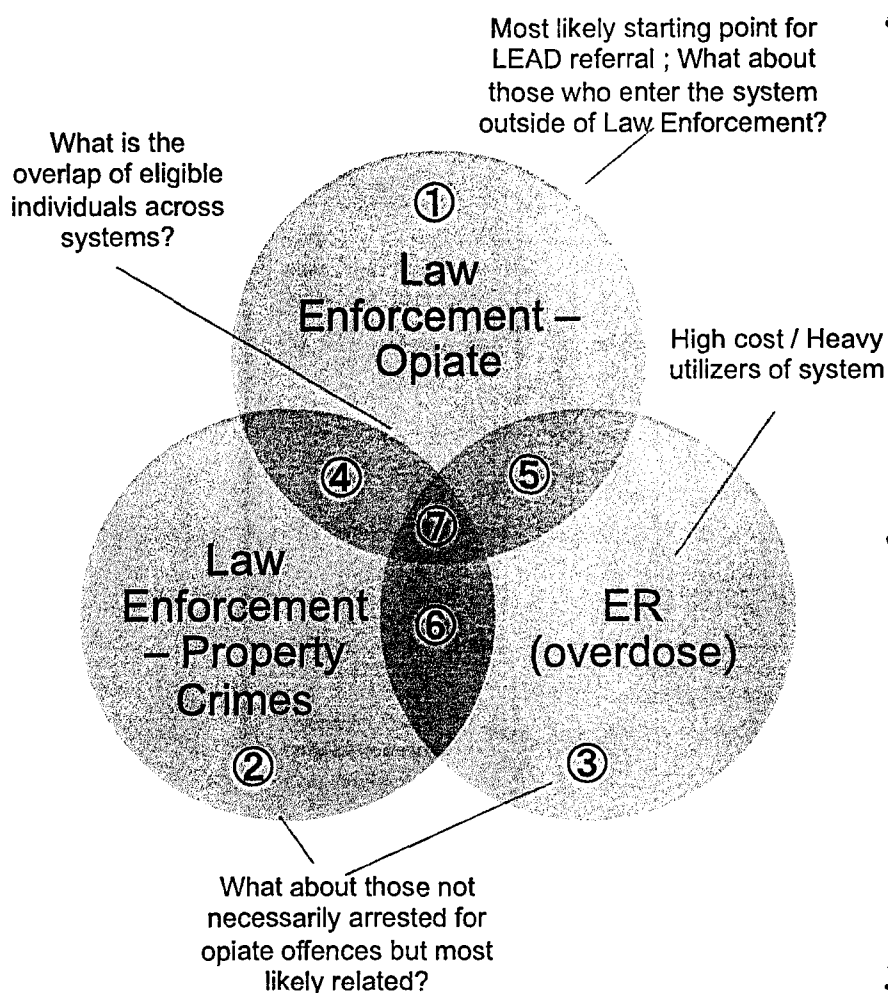
*Prepared by Joohee Rand, Consultant*



# Key Drivers of LEAD Economics and Impact

- **Eligibility**
  - **Criteria**  
(e.g., high utilizers of ER/Law Enforcement systems *or* broad/“blended” user base)
    - > Will affect assumptions on other variables and cost saving potential
    - > Consider developing scenarios based on “type” and # of eligible individuals
  - **# of eligible individuals referred / participating**
- **% Reduction in Recidivism**
- **Average cost of Law Enforcement, Court and Medical processes avoided/saved through LEAD (per participant)**
  - Due to initial LEAD referral
  - Due to reduction in recidivism (likely greater cost saving potential)
- **New LEAD process costs**  
(treatment, case management, social services)

# Individuals / Cases for LEAD Eligibility



## • What is the eligibility criteria and entry point for LEAD?

- **Direct opiate-related offences only (1,3,7,5)**
- **Property crimes and ER cases** that can be linked to opiate cases in the system through cross-reference (2, 3)
- **Are we missing key population?** (E.g., Juvenile or aging out of Juvenile, Potential high risk criminals if left untreated)
- What is our **criteria for prioritizing target participants?**
- **Pilot / 1<sup>st</sup> Yr vs. Long-Term**

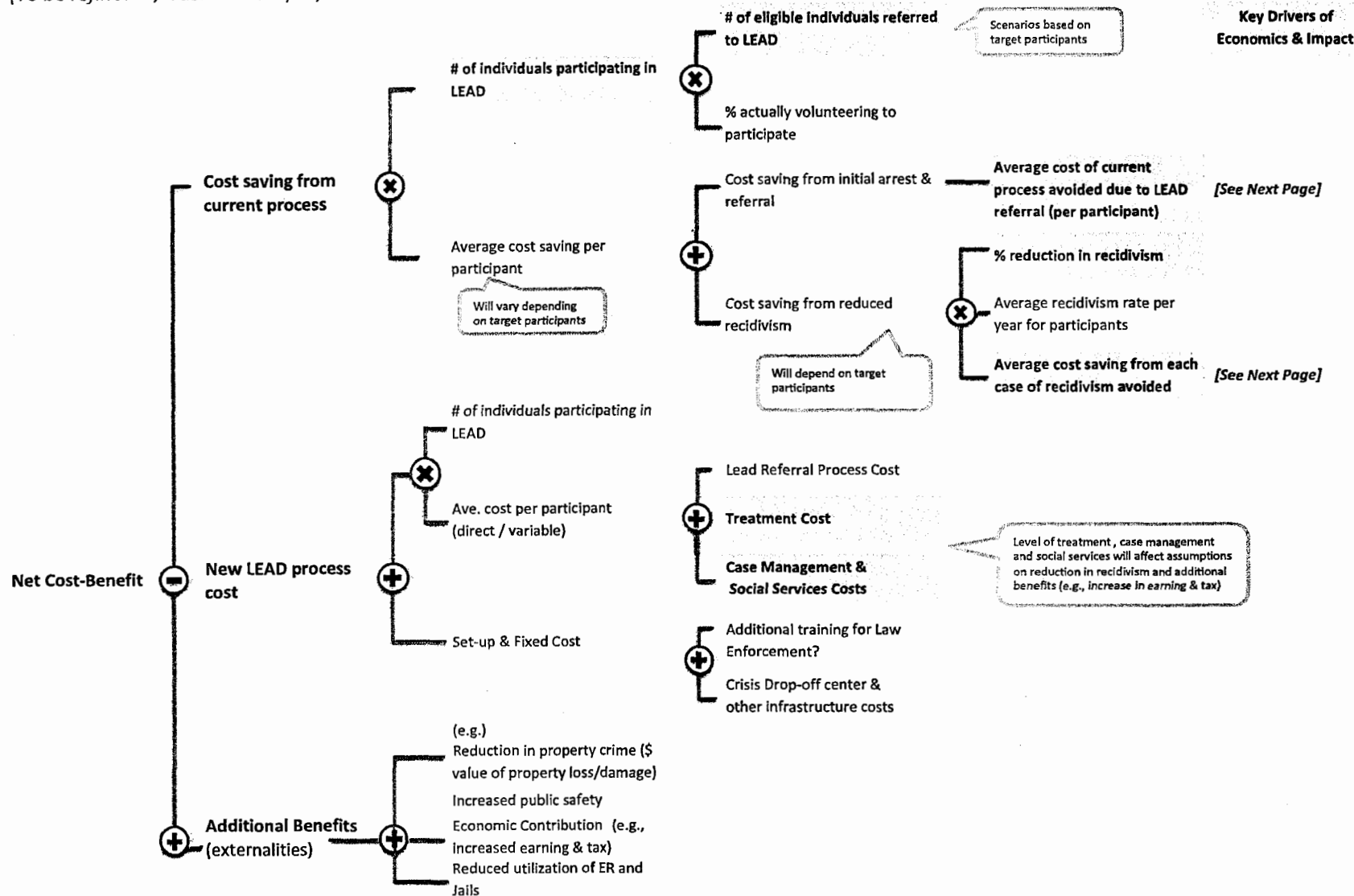
## • For cost benefit analysis:

- **Direct opiate-related law enforcement costs** *assuming initial referral takes place in opiate-related arrests (1,4,7,5)*
- **Cross-reference individuals across property crimes (2) and ER overdose(3)** that are not initially identified as opiate-related offences; Important for full assessment of:
  - Recidivism to the system
  - Savings across systems*(possible?)*
- **Process based on “individuals” recommended** with cross-reference and tracking across systems vs. individual “cases”



# LEAD Cost Benefit Analysis Framework - 1. Overall

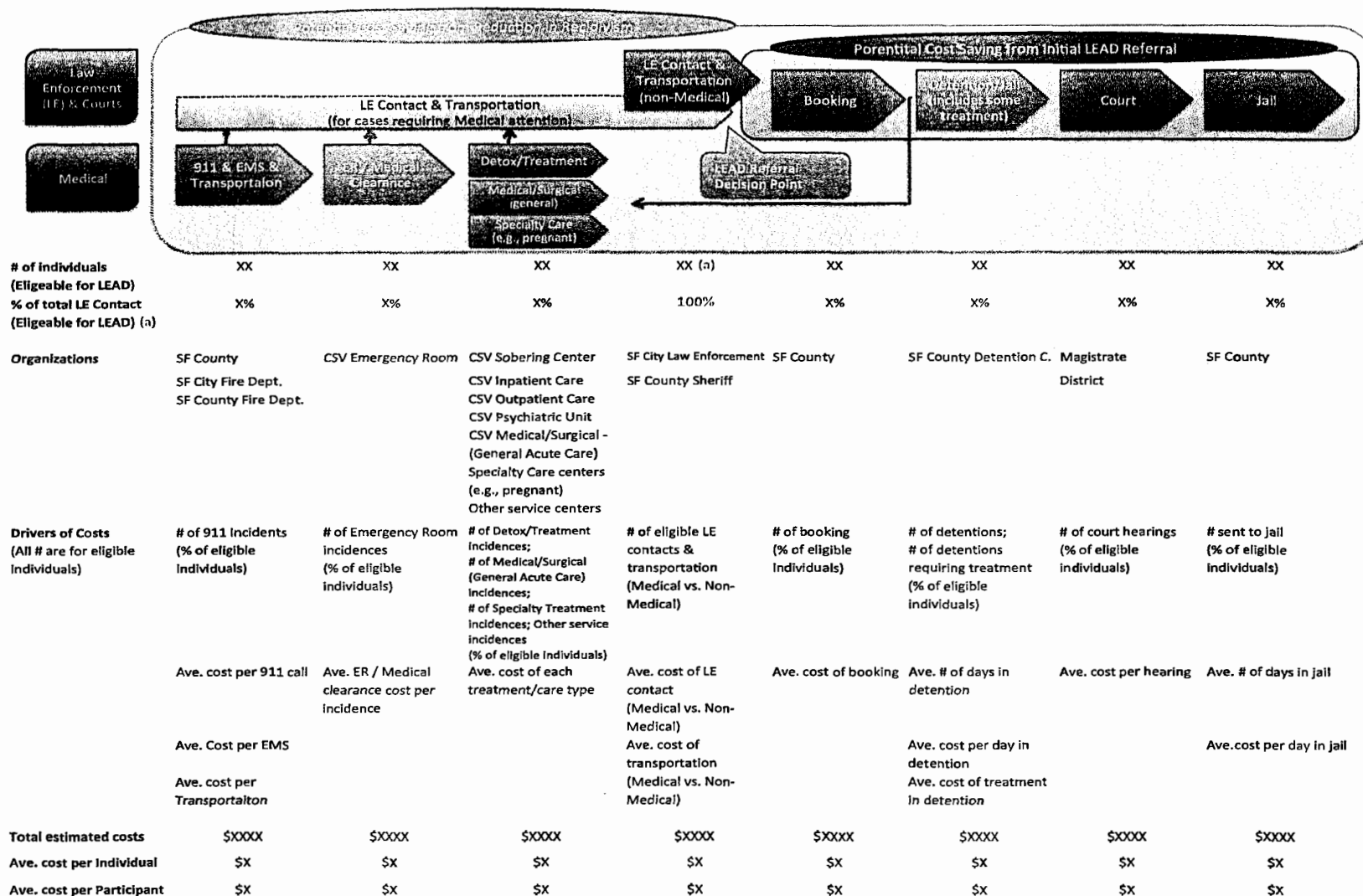
(To be refined w/ Task Force input)



# LEAD Cost Benefit Analysis Framework

## 2. Current Process for Opiated-Related Arrests & Potential Savings

(To be refined w/ Task Force input)



## Next Steps

- Define/refine analysis framework with Task Force Input, including
  - Overall framework
  - Current process mapping
  - Eligibility criteria / scenarios
- Meet with each Task Force sub-committee?
- Collect data from respective organizations across systems
- Evaluate cost-benefit based on scenarios
- *First focus on current cost savings; Estimate new LEAD process costs with Task Force recommendation*