

1 **CITY OF SANTA FE, NEW MEXICO**

2 **RESOLUTION NO. 2012-46**

3 **INTRODUCED BY:**

4 Councilor Romero  
5 Councilor Trujillo  
6 Councilor Wurzburger  
7 Councilor Calvert  
8 Councilor Ives  
9 Councilor Rivera

10 **A RESOLUTION**

11 **DIRECTING STAFF TO PREPARE THE REQUIRED DOCUMENTS TO AMEND THE**  
12 **CURRENT AGREEMENT BETWEEN THE CITY OF SANTA FE AND THE SANTA FE**  
13 **RAILYARD PARK STEWARDS FOR CONTINUED SERVICES TO BE PROVIDED AT**  
14 **THE SANTA FE RAILYARD PARK AND PLAZA FOR \$100,000 PER YEAR TO BE PAID**  
15 **OVER A THREE YEAR TERM, BEGINNING FY 2012/2013.**

16  
17 **WHEREAS**, on February 24, 2010, the Governing Body adopted Resolution No. 2010-11  
18 directing staff to identify funding and to enter into a three year agreement with the Railyard Stewards  
19 for \$25,000 per year to provide services for the Railyard Park; and

20 **WHEREAS**, on October 13, 2010, the Governing Body adopted Resolution No. 2010-82 to  
21 amend Resolution No. 2010-11 in order to authorize the city manager to increase the maximum  
22 amount paid to the Railyard Stewards for services to be performed to \$50,000 per year; and

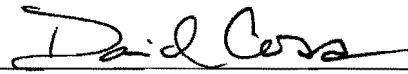
23 **WHEREAS**, the Railyard Stewards state in the *Railyard Stewards Tasks Accomplished and*  
24 *Added Value 2011 Report to the City of Santa Fe ("Report")* that in-kind contributions equal 3,960  
25 hours for a total of in-kind amount of \$109,950, see *Report*, attached hereto as Exhibit A; and

1           **WHEREAS**, such in-kind hours added value to the City of Santa Fe because the Railyard  
2 Stewards provided volunteer outreach, marketing, community and youth education and care for the  
3 Railyard Park and Plaza; and

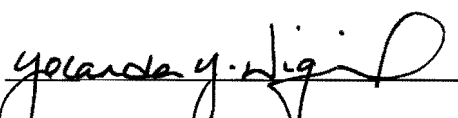
4           **WHEREAS**, the Governing Body appreciates the value of benefits the City has received  
5 from the Railyard Stewards and wishes to increase the annual amount provided to the Railyard  
6 Stewards.

7           **NOW, THEREFORE, BE IT RESOLVED BY THE GOVERNING BODY OF THE**  
8 **CITY OF SANTA FE** that staff is directed to prepare the required documents to amend the current  
9 agreement between the City of Santa Fe and the Santa Fe Railyard Park Stewards for continued  
10 services to be provided at the Santa Fe Railyard Park and Plaza for \$100,000 per year, to be paid over  
11 a three year term, beginning FY 2012/2013.

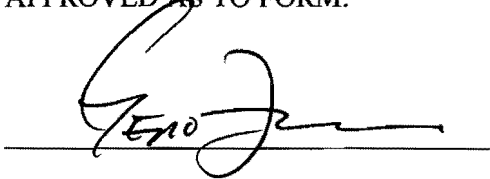
12           **PASSED, APPROVED, and ADOPTED** this 25<sup>th</sup> day of April, 2012.

13  
14   
15 \_\_\_\_\_  
16           **DAVID COSS, MAYOR**

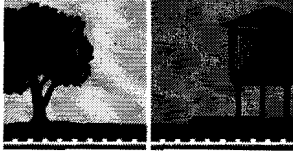
17           **ATTEST:**

18  
19   
20 \_\_\_\_\_  
21           **YOLANDA Y. VIGIL, CITY CLERK**

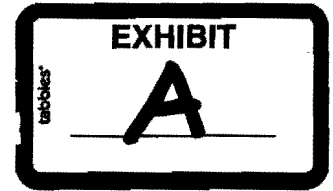
22           **APPROVED AS TO FORM:**

23   
24 \_\_\_\_\_  
25           **GENO ZAMORA, CITY ATTORNEY**

*mdb/Cao/M/Melissa/Resolutions 2012/2012-46 Railyard Park Stewards*

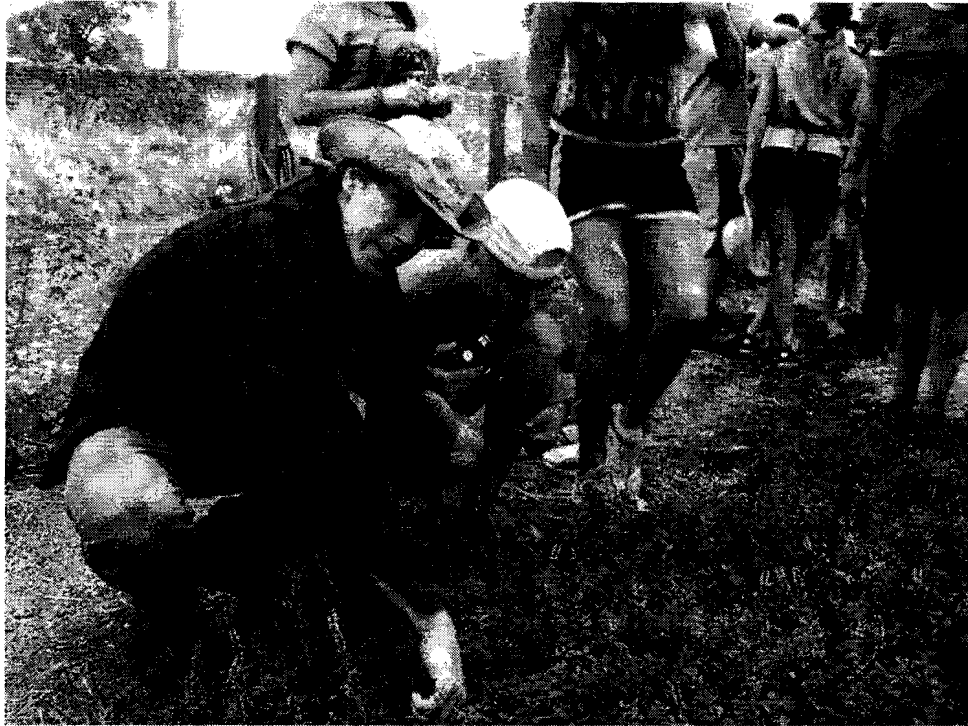


**RAILYARD  
STEWARDS**



## **Tasks Accomplished and Added Value** *2011 Report to the City of Santa Fe*

---



*Volunteers from the national Overland Youth Crews work in the park in the summer of 2011. Photo: The Railyard Stewards, 2011.*

The Railyard Stewards are honored to partner with the City of Santa Fe in the Railyard Park + Plaza. The Stewards leverage funding through thousands of volunteer hours and shared resources. In 2011 we focused on deepening our horticulture and volunteer programs and solidified our structure: we formed a 501(c)3 non-profit organization separate from The Trust for Public Land (as planned), and increased our staff and annual budget. We also increased our community workshops and our green job training programs, and continued our community and youth service-learning programs.

### **Tasks Accomplished in 2011**

The Railyard Stewards had a very busy year in 2011. Thank you to the City of Santa Fe for making this possible! Our accomplishments include:

- Provided over 144 park care events with community and youth volunteers
- Provided over 2300 hours of hands-on park care with volunteers and the community
- Had a total of 736 youth individual volunteer visits and 256 individual adult volunteer visits
- Engaged over 15 schools and youth groups in direct programs

- Increased our green job training hours with at-risk youth and young adults
- Secured awards for the Railyard Park + Plaza, including the Rudy Bruner Award for Urban Excellence
- Launched the Railyard Art Program with installations by Don Kennel (the Yard Dog sculpture) and Axel Contemporary Gallery; created online application system for applications
- Provided 22 community workshops and tours, a 55% increase from 2010
- Assisted the City and the Santa Fe Railyard Community Corporation (SFRCC) with coordination of the Railyard Community Room with the public
- Provided furniture and supplemented folding chairs and other amenities in the Railyard Community Room
- Sent out a monthly e-newsletter to over 700 recipients about happenings in the Railyard, including events ranging from community celebrations and workshops to business and gallery events
- Increased our staff from 1.15 FTE in 2010 to 1.95 FTE in 2011
- Secured a year-long, half time VISTA Americorps intern from the Western Hardrock Watershed Team funded by the Department of the Interior



*Many of the partners in the Railyard Park + Plaza pose with the first place 'Best of Santa Fe' award. Photo: The Railyard Stewards, 2011.*

**Added Value to the City of Santa Fe:**

The Railyard Stewards provided many hours of work for volunteer outreach, marketing, community and youth education and care for the Railyard Park and Plaza in 2011. Our budget shows direct costs (see attachment), and in-kind contributions, with a rate estimate of costs for these services, are listed on page 3.

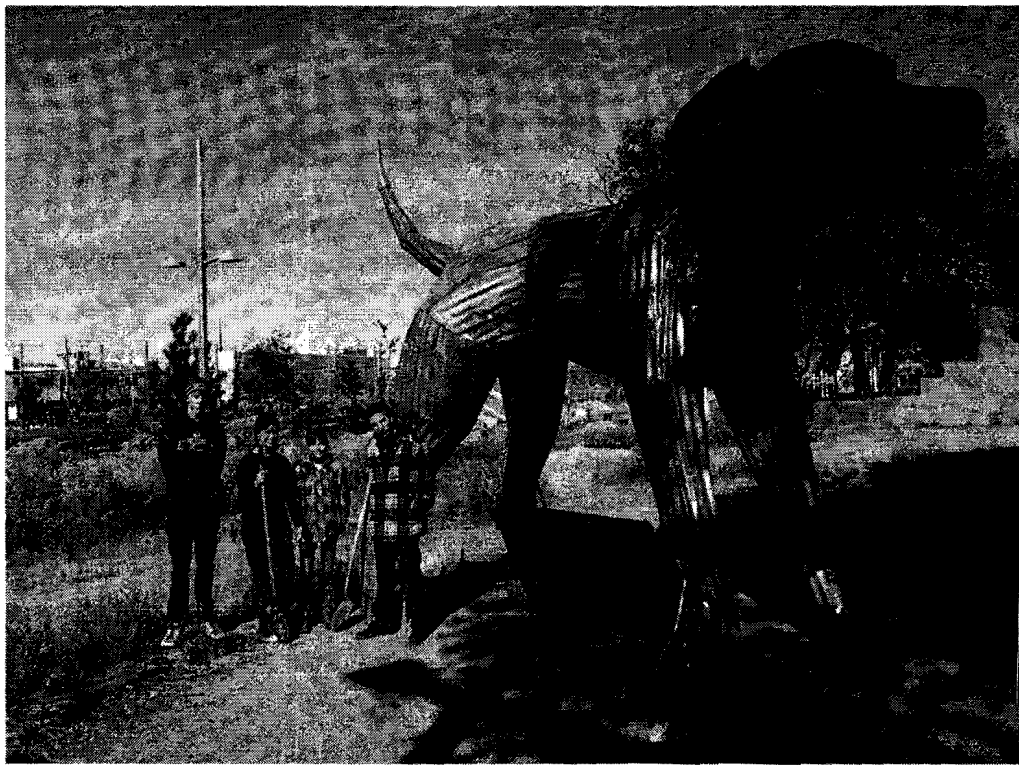
**BUDGET:** Our 2011 expenses were \$131,240 (\$50,000 towards expenses was provided by the city in 2011). The added value for direct costs excluding the City input of \$50,000 is \$81,240.

**IN-KIND CONTRIBUTIONS:**

<b>In-Kind Contribution</b>	<b>2011</b>	<b>Dollar Equivalent</b> (Includes estimated rate and taxes)
<b>Railyard Park Care:</b> Hands-on horticultural care in the Railyard Park and Plaza by the Stewards, community volunteers and youth groups to keep the park beautiful and healthy.	2300 Hours	\$46,000 (\$20/hour)
<b>Railyard Stewards Board Members: Specialized Skills:</b> The Railyard Stewards board provides hundreds of hours of skilled volunteer labor in fundraising, updating and creating the park care manual, providing expertise on art and installation, providing free labor on design and construction questions, creating marketing and public outreach tools, planning our volunteer recruitment activities, providing workshops to the public in areas of specialty, and guiding the specialized horticultural care of the Railyard Park + Plaza.	750 Hours	\$26,250 (\$35/hour)
<b>VISTA Americorps Intern:</b> In 2011 the Stewards secured a year-long, half time intern from the Western Hardrock Watershed Team (funded by the Department of the Interior). This shows estimated in-kind value for August – December 2011.	340 Hours	\$5,100 (\$15/hour)
<b>Workshop Presenters and Horticultural Volunteers: Specialized Skills:</b> The Railyard provided 22 community workshops and tours in the park in 2011. Topics ranged from fruit tree pruning to growing grain and vegetable gardening. The majority of presenters donated their time to share their specialized skills with the public (only two presenters were given a stipend for their presentation).	110 Hours	\$3,850 (\$35/hour)
<b>Community Gardens:</b> The Railyard Stewards coordinate the two Railyard Community Gardens, including membership and volunteers, youth and school programs, partners, and food donations to the Food Depot and St. Elizabeth's shelter.	450	\$9,000 (\$20/hour)
<b>Railyard Art Committee Hours:</b> The Stewards coordinate hundreds of volunteer hours for the Railyard Art Program (for temporary public art); hours include committee member time on policy development, outreach, and site and artist coordination.	350	\$12,250 (\$35/hour)
<b>In-Kind Materials:</b> The value of plants, tools, compost, community room materials, etc. provided for the public and park care volunteers	NA	\$5,000
<b>Donated Technical Materials and Services:</b> As a non-profit organization, the Stewards receive donated and discounted equipment and services. This estimate is for donated items in 2011, including office equipment, software, and website development.	NA	\$2,500
<b>TOTAL IN-KIND:</b>	<b>3960 Hours</b>	<b>\$109,950</b>
<b>TOTAL ADDED VALUE (2011 BUDGET AND IN-KIND)</b>	<b>\$191,190</b>	



*Volunteers from the United World College work with YouthWorks and the Stewards in a cultural exchange service-learning session at the Railyard in the summer of 2011. Below: Students from Santa Fe Prep's Teen Action Program pose with the Yard Dog sculpture. Photos: The Railyard Stewards, 2011.*



**Railyard Stewards 2011 Budget:**

	<b><u>TOTAL</u></b>
	<b><u>Jan - Dec</u></b>
	<b><u>11</u></b>
<b>Income</b>	
BEGINNING CASH	4,838
PUBLIC SUPPORT	51,907
PROGRAM REVENUE	75,505
OTHER INCOME	<u>0</u>
<b>Total Income</b>	<b>132,250</b>
<b>Expense</b>	
STAFFING EXPENSES	89,891
CONTRACTED SERVICES	13,828
BUSINESS EXPENSES	3,025
FACILITIES & EQUIPMENT	10,162
PROGRAM OPERATIONS	11,826
Other Types of Expenses	194
TRAVEL & MEETINGS	2,314
Uncategorized Expenses	<u>0</u>
<b>Total Expense</b>	<b>131,240</b>