

1
2
3
4
5
6
7
8
9
10
11
12
13
14
15
16
17
18
19
20
21
22
23
24
25

CITY OF SANTA FE, NEW MEXICO

RESOLUTION NO. 2007-111

A RESOLUTION

AMENDING THE GENERAL PLAN DESIGNATION FROM OFFICE TO TRANSITIONAL MIXED USE FOR A PARCEL GENERALLY LOCATED AT THE SOUTHEAST CORNER OF AIRPORT ROAD AND BUFFALO GRASS ROAD COMPRISING AN AREA 3.708 ACRES MORE OR LESS ("WESTON STUDIO GALLERY GENERAL PLAN AMENDMENT" GENERAL PLAN AMENDMENT CASE #M 2007-24)

WHEREAS, the owner of the subject property has submitted an application to amend the General Plan Future Land Use Map designation of the property from "Office" to "Transitional Mixed Use"; and

WHEREAS, pursuant to Section 3-19-9 NMSA 1978, the General Plan may be amended, extended or supplemented; and

WHEREAS, the general plan amendment criteria set forth in Chapter 14 of the City Code of the City of Santa Fe, New Mexico Article 14-3.2(D), have been met; and

WHEREAS, reclassification of the subject property would be substantially consistent with the General Plan themes and policies for Land Use (General Plan, Chapter 3) and Growth Management (General Plan, Chapter 4).

Section 1. The following real property (the "Property") located within the municipal boundaries of the city of Santa Fe, which has been annexed pursuant to Case No. ZA 2007-06 is restricted to and classified as Mixed Use (MU.)

A certain parcel of land lying within Section 12, Township 16N, Range 8E, N.M.P.M., and adjacent Airport Road right-of-way pursuant to Section 3-17-18 NMSA

1 1978, both shown on the Annexation Plat (Exhibit A) and more particularly described in
2 the attached Legal Description (Exhibit B) and incorporated herein by reference.

3 **Section 2.** The Master Plan is hereby approved (Exhibit C) and incorporated
4 herein by reference.

5 **Section 3.** This Ordinance shall be published one time by the title and general
6 summary and shall become effective five days after such publication.

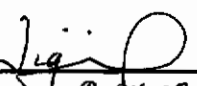
7 **NOW, THEREFORE, BE IT RESOLVED BY THE GOVERNING BODY OF THE CITY**
8 **OF SANTA FE** that the General Plan Future Land Use Map designation for land
9 generally at the southeast corner of Airport and Buffalo Grass Road amended to change
10 the designation from "Office" to "Transitional Mixed Use" as shown in "Exhibit A"
11 attached hereto.

12 **PASSED, APPROVED and ADOPTED this 28th day of November, 2007.**

13
14 

15 **DAVID COSS, MAYOR**

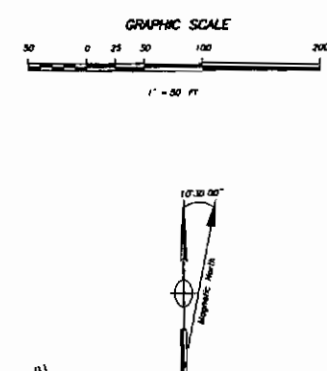
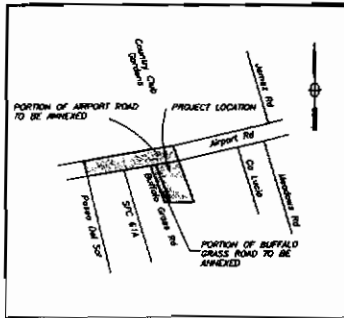


16
17
18 
19 **YOLANDA Y. VIGIL, CITY CLERK** 9-24-08

20
21 **APPROVED AS TO FORM:**

22 
23
24 **FRANK KATZ, CITY ATTORNEY**

25



OWNERS CONSENT
 THAT THE UNDERSIGNED OWNERS AND PROPRIETORS HAVE REVIEWED THIS PLANNING PLAT HAS PREPARED TO SHOW THE LANDS TO BE ANNEXED INTO THE CITY OF SANTA FE, LYING WITHIN THE COUNTY OF NEW MEXICO, ALL THAT APPEARS ON THIS PLAT IS MADE WITH THE FREE CONSENT AND IN ACCORDANCE WITH THE DESIRES OF THE UNDERSIGNED AND PROPRIETORS. THESE LANDS LIE WITHIN THE PLANNING AND PLATTING JURISDICTION OF THE CITY OF SANTA FE LYING WITHIN THE COUNTY OF SANTA FE, NEW MEXICO.

Will Weston July 29 2008
 DELL WESTON PROPERTY OWNER DATE

STATE OF NEW MEXICO } SS
COUNTY OF SANTA FE }

THE FOREGOING INSTRUMENT WAS ACKNOWLEDGED BEFORE ME THIS DAY OF July 29 2008

NOTARY PUBLIC *William J. [Signature]*



- DOCUMENTS OF REFERENCE**
1. RECORD IS BASED ON PLAT OF SURVEY BY CHARLES HARTUNG, MAPS 100, 2008 FOR DEL WESTON, DATED OCTOBER 15, 1985 AND RECORDED IN PLAT BOOK 158 PAGE 014, RECORDS OF SANTA FE COUNTY, NEW MEXICO (SHOWN IN PARENTHESES).
 2. WARRANTY DEED FROM ALBERT WIELAND TO DELL WESTON, RECORDED ON JANUARY 20, 1988, IN BOOK 345 PAGE 183-194 AS DOCUMENT NO. 548,877, RECORDS OF SANTA FE COUNTY, NEW MEXICO.
 3. THIS PROPERTY IS SUBJECT TO ALL EASEMENTS OF RECORD (SHOWN HEREON IF ANY).
 4. PLAT OF SURVEY BY MEREDITH A. ANDRICH, MAPS NO. 5300 FILED JULY 8, 2008 AS DOCUMENT NO. 133,638 IN PLAT BOOK 352 PAGE 014, RECORDS OF SANTA FE COUNTY, NEW MEXICO.

CITY OF SANTA FE, N.M. APPROVALS

REVIEWED AND APPROVED BY THE CITY COUNCIL OF THE CITY OF SANTA FE AT ITS MEETING ON NOVEMBER 21 2007

AS CASE NO. #H2007-25 WESTON STUDIO GALLERY ANNEXATION
Bill # 2007-60
ORDINANCE # 2007-46 DATE 8/20/08

CITY MANAGER *[Signature]* DATE 8-20-08

REVIEWED AND APPROVED BY THE PLANNING COMMISSION OF THE CITY OF SANTA FE AT ITS MEETING ON OCTOBER 9 2007

AS CASE NO. #M2007-25 WESTON STUDIO ANNEXATION

CITY ENGINEER *[Signature]* DATE 07/20/08
 CITY PLANNER *[Signature]* DATE 07/30/08

- NOTES.**
1. CONDITION OF APPROVAL #1) DEVELOPMENT SHALL BUILD TO ENERGY STAR STANDARDS
 2. CONDITION OF APPROVAL #2) AS PER PUBLIC WORKS DEPARTMENT, ENGINEERING DIVISION, TRAFFIC IMPACTS SECTION, JOHN ROMEIRO ROAD DATED JULY 11, 2007
 3. CROSS REFERENCE DEDICATION PLAT BY _____ PG _____
 4. ANNEXATION ORDINANCE #2007-46
 5. REFERENCING #1-MU ORDINANCE #2007-47
 6. GENERAL PLAN AMENDMENT RESOLUTION #2007-111

LEGAL DESCRIPTION FOR AREA "C"

A TRACT OF LAND LYING AND BEING WITHIN SECTION 12, T18N, R08E, N.M.P.M., SANTA FE COUNTY, STATE OF NEW MEXICO AND BEING MORE PARTICULARLY DESCRIBED AS FOLLOWS:

BEGINNING AT THE SOUTHWEST CORNER OF THIS TRACT FROM WHENCE A CITY OF SANTA FE CONTROL INSTRUMENT NO. 1007 BEARS S04°10'30"E, A DISTANCE OF 243.80 FEET; THENCE FROM SAID POINT AND PLACE OF BEGINNING N87°12'30"W, A DISTANCE OF 74.00 FEET TO A POINT; THENCE N87°12'30"W, A DISTANCE OF 101.83 FEET TO A POINT; THENCE S04°10'30"E, A DISTANCE OF 243.80 FEET TO A POINT; THENCE S89°10'40"E, A DISTANCE OF 436.18 FEET TO A POINT; THENCE S28°21'12"E, A DISTANCE OF 184.67 FEET TO THE POINT AND PLACE OF BEGINNING.

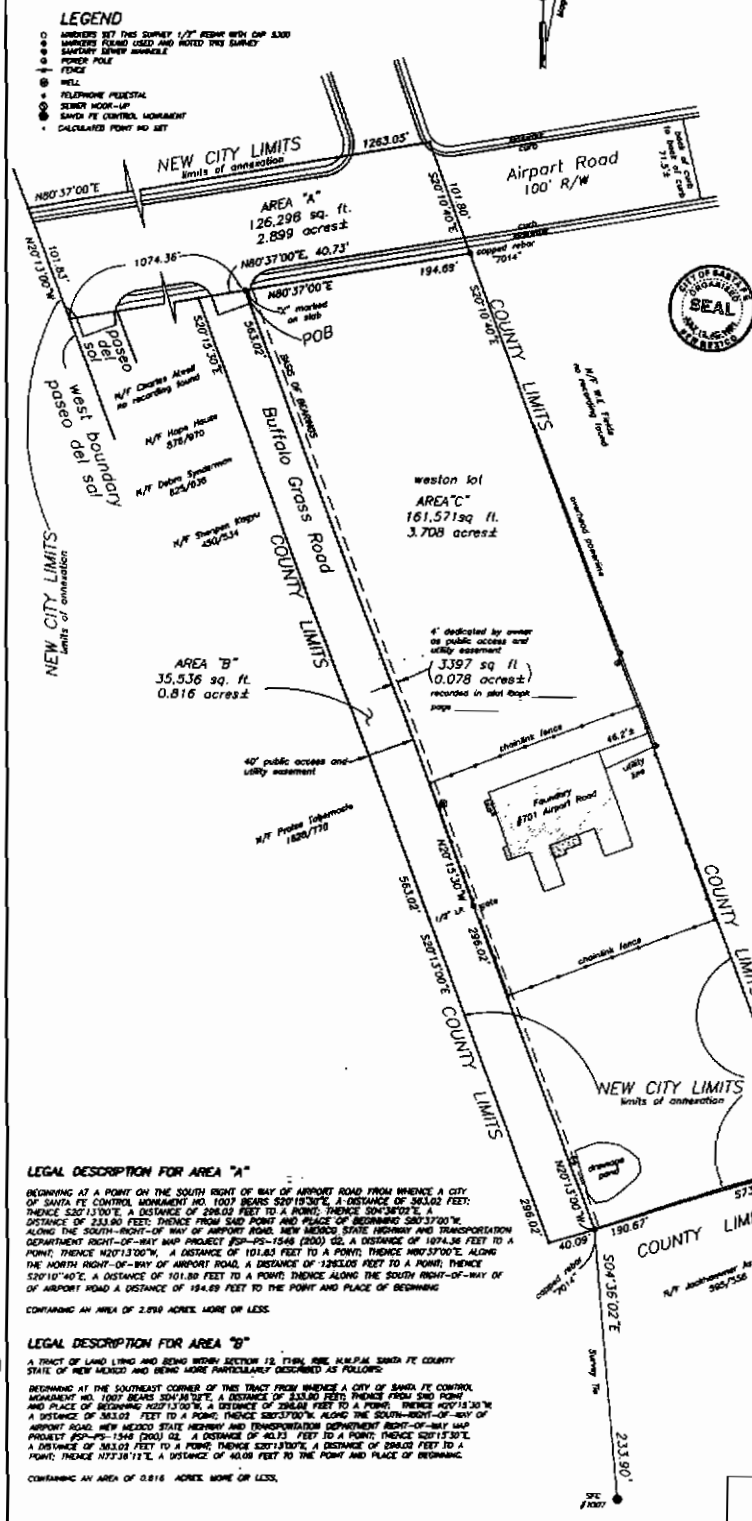
CONTAINING AN AREA OF 3.708 ACRES, MORE OR LESS.

STATE OF NEW MEXICO } SS
COUNTY OF SANTA FE } INSTRUMENT NO. 1937506

I HEREBY CERTIFY THAT THIS INSTRUMENT WAS FILED FOR RECORD ON THE 9th DAY OF SEPTEMBER 2008 AT 11:53 O'CLOCK A.M. AND WAS DULY RECORDED IN PLAT BOOK 168 PAGE 081 OF THE RECORDS OF SANTA FE COUNTY, NEW MEXICO.

WITNESSED AND SEALED OF THE OFFICE OF VALERIE ESPANOLA, THE SANTA FE COUNTY CLERK.

Valerie Espanola
 DEPUTY SANTA FE COUNTY CLERK, OFFICE, STATE OF NEW MEXICO



LEGAL DESCRIPTION FOR AREA "A"

BEGINNING AT A POINT ON THE SOUTH RIGHT-OF-WAY OF AIRPORT ROAD FROM WHENCE A CITY OF SANTA FE CONTROL INSTRUMENT NO. 1007 BEARS S04°10'30"E, A DISTANCE OF 363.02 FEET; THENCE S87°12'30"E, A DISTANCE OF 246.00 FEET TO A POINT; THENCE S04°10'30"E, A DISTANCE OF 243.80 FEET; THENCE FROM SAID POINT AND PLACE OF BEGINNING S87°12'30"E, A DISTANCE OF 74.00 FEET TO A POINT; THENCE S04°10'30"E, A DISTANCE OF 101.83 FEET TO A POINT; THENCE S89°10'40"E, A DISTANCE OF 436.18 FEET TO A POINT; THENCE S28°21'12"E, A DISTANCE OF 184.67 FEET TO THE POINT AND PLACE OF BEGINNING.

CONTAINING AN AREA OF 2.899 ACRES, MORE OR LESS.

LEGAL DESCRIPTION FOR AREA "B"

A TRACT OF LAND LYING AND BEING WITHIN SECTION 12, T18N, R08E, N.M.P.M., SANTA FE COUNTY, STATE OF NEW MEXICO AND BEING MORE PARTICULARLY DESCRIBED AS FOLLOWS:

BEGINNING AT THE SOUTHWEST CORNER OF THIS TRACT FROM WHENCE A CITY OF SANTA FE CONTROL INSTRUMENT NO. 1007 BEARS S04°10'30"E, A DISTANCE OF 243.80 FEET; THENCE FROM SAID POINT AND PLACE OF BEGINNING N87°12'30"W, A DISTANCE OF 74.00 FEET TO A POINT; THENCE S04°10'30"E, A DISTANCE OF 243.80 FEET TO A POINT; THENCE S89°10'40"E, A DISTANCE OF 436.18 FEET TO A POINT; THENCE S28°21'12"E, A DISTANCE OF 184.67 FEET TO THE POINT AND PLACE OF BEGINNING.

CONTAINING AN AREA OF 0.816 ACRES, MORE OR LESS.

CERTIFICATE

I, MEREDITH A. ANDRICH, A NEW MEXICO REGISTERED PROFESSIONAL SURVEYOR CERTIFY THAT ON NOVEMBER 7, 2008, I CONDUCTED AND AM RESPONSIBLE FOR THIS SURVEY; THAT THIS SURVEY IS TRUE AND CORRECT TO THE BEST OF MY KNOWLEDGE AND BELIEF; THAT THIS SURVEY AND PLAT MEET THE MINIMUM STANDARDS FOR SURVEYING IN THE STATE OF NEW MEXICO.

[Signature] 7/29/08
 MEREDITH A. ANDRICH DATE

Exhibit A

A - Z SURVEYING INC.

5330 ADIA, P.O. BOX 87907, SANTA FE - NM 87507, TELEPHONE (505) 471-5386

NEEDING INFORMATION FOR COUNTY CLERK
 ANNEXATION PLAT FOR
DELL WESTON
 #701 AIRPORT ROAD - TRACT A2
 WITHIN SECTION 12,
 TOWNSHIP 18 NORTH, RANGE 8 EAST, N.M.P.M.
 SANTA FE COUNTY, NEW MEXICO

CHECKED BY: _____ DATE: _____ SURVEY NO: _____
 SCALE: 1"=50' JULY 3 LOB-633

EXHIBIT B:

RESOLUTION NO. 2007- 111

**LEGAL DESCRIPTION
WESTON STUDIO GALLERY GENERAL PLAN AMENDMENT**

(CASE NO. M2007-24)

LEGAL DESCRIPTION FOR AREA "A"

BEGINNING AT A POINT ON THE SOUTH RIGHT OF WAY OF AIRPORT ROAD FROM WHENCE A CITY OF SANTA FE CONTROL MONUMENT NO. 1007 BEARS S20°15'30"E, A DISTANCE OF 563.02 FEET; THENCE S20°13'00"E, A DISTANCE OF 296.02 FEET TO A POINT; THENCE S04°36'02"E, A DISTANCE OF 233.90 FEET; THENCE FROM SAID POINT AND PLACE OF BEGINNING S80°37'00"W, ALONG THE SOUTH-RIGHT-OF WAY OF AIRPORT ROAD, NEW MEXICO STATE HIGHWAY AND TRANSPORTATION DEPARTMENT RIGHT-OF-WAY MAP PROJECT #SP-PS-1546 (200) 02, A DISTANCE OF 1074.36 FEET TO A POINT; THENCE N20°13'00"W, A DISTANCE OF 101.83 FEET TO A POINT; THENCE N80°37'00"E, ALONG THE NORTH RIGHT-OF-WAY OF AIRPORT ROAD, A DISTANCE OF 1263.05 FEET TO A POINT; THENCE S20°10'40"E, A DISTANCE OF 101.80 FEET TO A POINT; THENCE ALONG THE SOUTH RIGHT-OF-WAY OF AIRPORT ROAD A DISTANCE OF 194.69 FEET TO THE POINT AND PLACE OF BEGINNING.

CONTAINING AN AREA OF 2.899 ACRES, MORE OR LESS.

LEGAL DESCRIPTION FOR AREA "B"

A TRACT OF LAND LYING AND BEING WITHIN SECTION 12, T16N, R8E, N.M.P.M. SANTA FE COUNTY, STATE OF NEW MEXICO AND BEING MORE PARTICULARLY DESCRIBED AS FOLLOWS:

BEGINNING AT THE SOUTHEAST CORNER OF THIS TRACT FROM WHENCE A CITY OF SANTA FE CONTROL MONUMENT NO. 1007 BEARS S04°36'02"E, A DISTANCE OF 233.90 FEET; THENCE FROM SAID POINT AND PLACE OF BEGINNING N20°13'00"W, A DISTANCE OF 296.02 FEET TO A POINT; THENCE N20°15'30"W, A DISTANCE OF 563.02 FEET TO A POINT; THENCE S80°37'00"W, ALONG THE SOUTH-RIGHT-OF-WAY OF AIRPORT ROAD, NEW MEXICO STATE HIGHWAY AND TRANSPORTATION DEPARTMENT RIGHT-OF-WAY MAP PROJECT #SP-PS-1546 (200) 02, A DISTANCE OF 40.73 FEET TO A POINT; THENCE S20°15'30"E, A DISTANCE OF 563.02 FEET TO A POINT; THENCE S20°13'00"E, A DISTANCE OF 296.02 FEET TO A POINT; THENCE N73°36'12"E, A DISTANCE OF 40.08 FEET TO THE POINT AND PLACE OF BEGINNING.

CONTAINING AN AREA OF 0.816 ACRES, MORE OR LESS.

LEGAL DESCRIPTION FOR AREA "C"

A TRACT OF LAND LYING AND BEING WITHIN SECTION 12, T16N, R8E, N.M.P.M. SANTA FE COUNTY, STATE OF NEW MEXICO AND BEING MORE PARTICULARLY DESCRIBED AS FOLLOWS:

BEGINNING AT THE SOUTHWEST CORNER OF THIS TRACT FROM WHENCE A CITY OF SANTA FE CONTROL MONUMENT NO. 1007 BEARS S04°36'02"E, A DISTANCE OF 233.90 FEET; THENCE FROM SAID POINT AND PLACE OF BEGINNING N20°13'00"W, A DISTANCE OF 296.02 FEET TO A POINT; THENCE N20°15'30"W, A DISTANCE OF 563.02 FEET TO A POINT; THENCE N80°37'00"E, A DISTANCE OF 194.69 FEET TO A POINT; THENCE S20°10'40"E, A DISTANCE OF 835.15 FEET TO A POINT; THENCE S73°36'12"W, A DISTANCE OF 190.67 FEET TO THE POINT AND PLACE OF BEGINNING.

CONTAINING AN AREA OF 3.708 ACRES, MORE OR LESS.

