

1 CITY OF SANTA FE, NEW MEXICO

2 RESOLUTION NO. 2009-86

3 INTRODUCED BY:

4 C. DOMINGUEZ
5
6
7
8
9

10 A RESOLUTION

11 AMENDING TABLE 37, PAGE 36 OF THE CITY OF SANTA FE IMPACT FEES
12 CAPITAL IMPROVEMENTS PLAN AND LAND USE ASSUMPTIONS, 2007-2012
13 REGARDING PLANNED PARK IMPROVEMENTS ADDING NEW PARKS TO BE
14 ELIGIBLE TO RECEIVE IMPACT FEE FUNDING.

15
16 WHEREAS, on January 9, 2008, the governing body approved Resolution No. 2008-07
17 adopting the *Impact Fee Capital Improvements Plan and Land Use Assumptions, 2007-2012* for
18 the city of Santa Fe; and

19 WHEREAS, Table 37 of the capital improvements plan entitled "Planned Park
20 Improvements, 2007-2012," lists both Neighborhood and Regional parks to be improved; and

21 WHEREAS, Section 14-8.15(A)(4) SFCC 1987 states: "Land dedicated for
22 neighborhood parks shall be based upon a rate of 3 acres per 1,000 persons, or per 500 housing
23 units"; and

24 WHEREAS, staff of the Housing and Community Development Department have
25 estimated that there is a population of 7,000 residents in Tierra Contenta; and

1 **WHEREAS**, Tierra Contenta’s 7,000 residents should currently have 21 acres of
2 neighborhood parks and there are only 1.95 acres; and

3 **WHEREAS**, at full build out Tierra Contenta should have 29.6 acres of neighborhood
4 parks; and

5 **WHEREAS**, the following projections for 2015 are for Census Tracts 13 and 12.01
6 which are located north and south of Airport Road from Cerrillos Road to Highway 599:

2015 Projections for Entire Census Tracts 13 and 12.01	Total
Houses	9,145
Population	27,346
Children	8.802

11
12 ; and

13 **WHEREAS**, city of Santa Fe Resolution No. 2007-2 stated that positive and healthy
14 lifestyle choices for school-age children are a priority for the City of Santa Fe; and

15 **WHEREAS**, Resolution No. 2007-77 stated that “the Governing Body desires to
16 promote healthy lifestyles and physical activity by making improvements to the City’s parks,
17 open space, trails and recreational facilities”; and

18 **WHEREAS**, because of the City of Santa Fe’s healthy lifestyles initiatives, population
19 growth and the identified need for additional development of neighborhood and community parks
20 throughout the southwest portions of the city, including Tierra Contenta, it is appropriate to
21 amend the Impact Fee Capital Improvements Plan to include additional parks and their
22 improvements as eligible for capital impact fee funding.

23 **NOW, THEREFORE, BE IT RESOLVED BY THE GOVERNING BODY OF THE**
24 **CITY OF SANTA FE** that Table 37, page 36 of the Impact Fee Capital Improvements Plan is
25 amended to include the following list and estimated cost of “Planned Park Improvements, 2007-

1 2012”:

2

3

4

5

6

7

8

9

10

11

Planned Park Improvements	Estimated Cost
Plaza at the Southside Library – Phase 1B, Unit 1	\$250,000.00
Southwest Activity Node, <i>See attached Exhibit A</i> Tierra Contenta Master Plan which shall include, without limitation, a dog park, playground with water feature, baseball and soccer fields, and a skate park	\$ 75,000.00
Colonia Prisma Park Planning (2.523 acres), <i>See</i> <i>attached Exhibit B</i>	\$ 10,000.00

12 PASSED, APPROVED, and ADOPTED this 9th day of September, 2009.

13

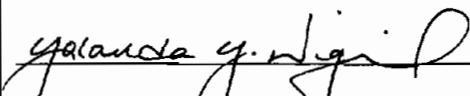
14

15 

16 DAVID COSS, MAYOR

17 ATTEST:

18

19 

20 YOLANDA VIGIL, CITY CLERK

21 APPROVED AS TO FORM:

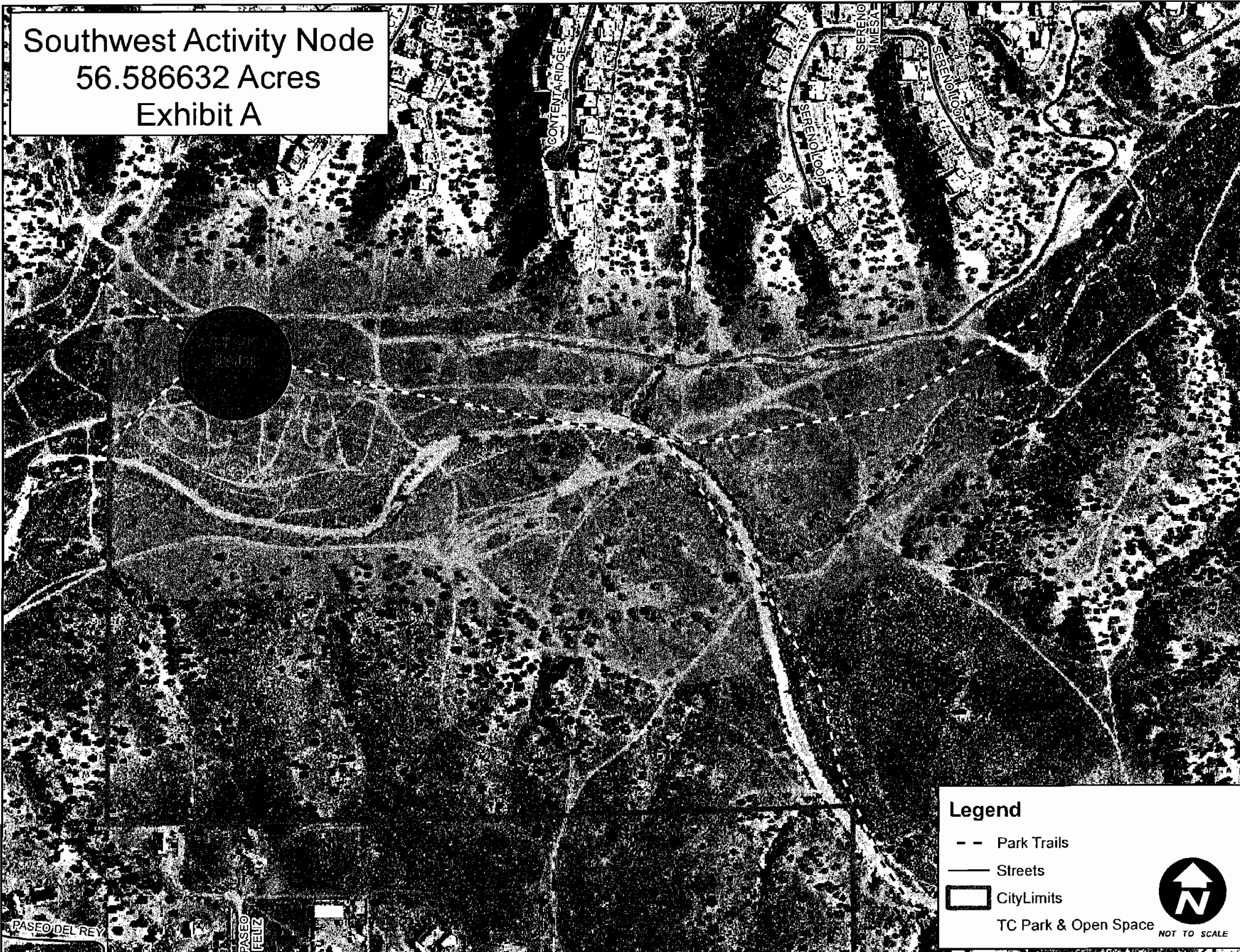
22

23 

24 FRANK D. KATZ, CITY ATTORNEY

25 *jp/ca/jpmb/2009 res/Impact fees CIP SW parks*

Southwest Activity Node
56.586632 Acres
Exhibit A



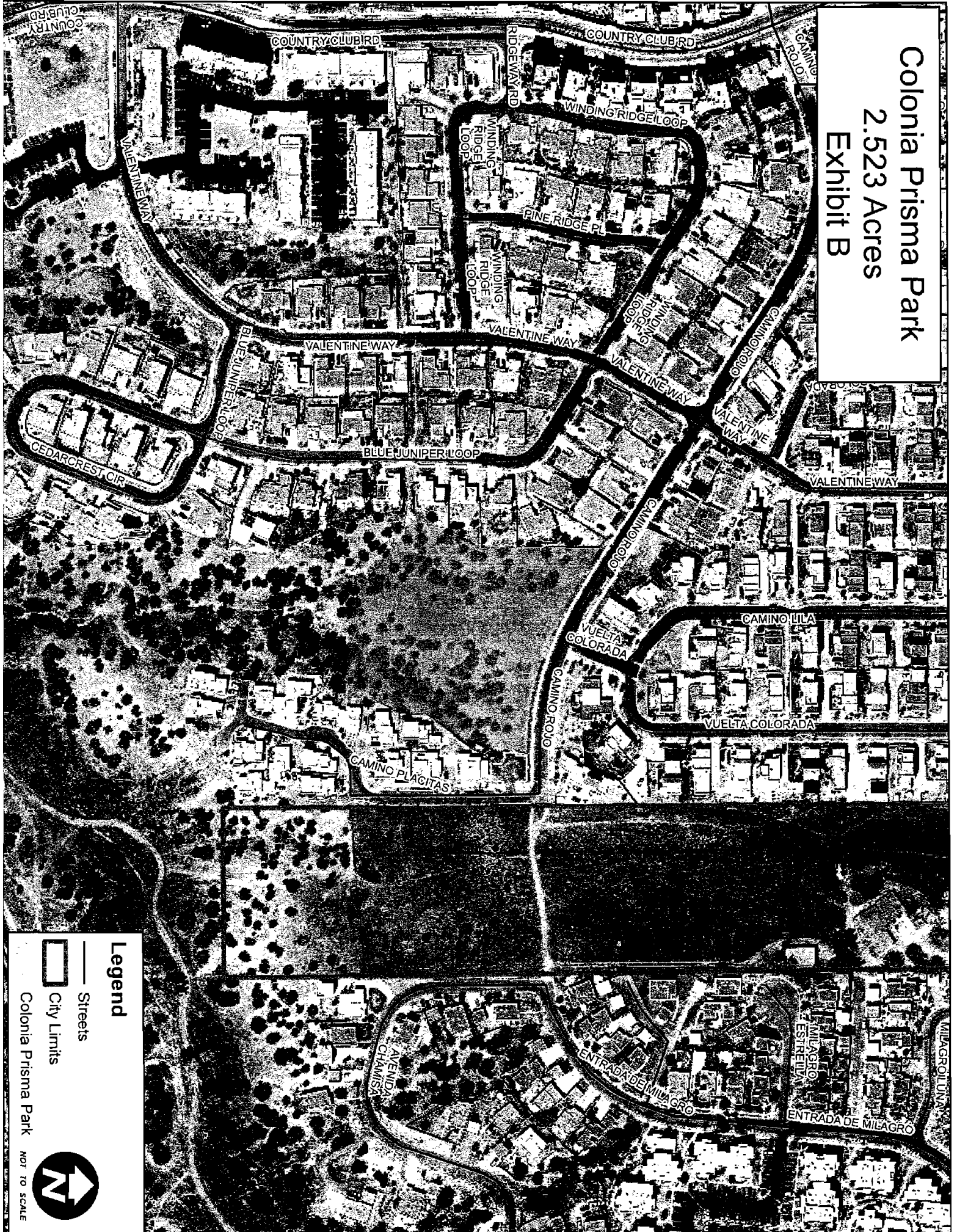
Legend

- - Park Trails
- Streets
- ▭ City Limits
- TC Park & Open Space



NOT TO SCALE

Colonia Prisma Park
2.523 Acres
Exhibit B



Legend

- Streets
- ▭ City Limits

Colonia Prisma Park



NOT TO SCALE