



CITY CLERK'S OFFICE
Agenda DATE 5/12/16 TIME 2:25p
SERVED BY [Signature]
RECEIVED BY [Signature]

SUSTAINABLE SANTA FE COMMISSION

Wednesday, May 18, 2016, 4:00 p.m.

Councilors' Conference Room, City Hall (200 Lincoln Avenue)

- A. CALL TO ORDER
- B. ROLL CALL
- C. APPROVAL OF AGENDA
- D. APPROVAL OF MINUTES: April 20, 2016
- E. COMMUNICATIONS FROM THE FLOOR
- F. REPORT FROM, AND ASSIGNMENT OF, ACTIONEER
- G. DISCUSSION/ACTION ITEMS
 - 1. Presentation: Santa Fe Food Policy Council, Morgan Day, Coordinator
 - 2. Presentation: PNM Rate Case, Mariel Nanasi, New Energy Economy
 - 3. A RESOLUTION ESTABLISHING THE VERDE FUND TO REDUCE SYSTEMIC POVERTY, ACHIEVE CARBON NEUTRALITY, AND EMPOWER SANTA FE'S WORKFORCE; AUTHORIZING THE ONE-TIME APPROPRIATION OF \$300,000 OF UNBUDGETED EXCESS LAND USE PERMIT FEES [5% OF THE ¼% GRT EFFECTIVE JANUARY 1, 2017]; DIRECTING THE CITY MANAGER TO PRESENT A PLAN TO THE GOVERNING BODY ON STEPS TO IMPLEMENT THE VERDE FUND [WITHIN 90 DAYS]; AND ALLOWING FOR A PUBLIC HEARING TO MAKE DESIRED CHANGES TO THE PLAN AND APPROVE AS MODIFIED. (Mayor Gonzales) (Alexandra Ladd / John Alejandro / Zackary Quintero)
 - 4. Updates: 25-Year Sustainability Plan Updates: RFP status; plan timeline; committees
- H. ITEMS FROM THE CHAIR & CO-CHAIR
- I. ITEMS FROM THE COMMISSION
- J. ITEMS FROM STAFF
- K. ITEMS FROM THE PUBLIC
- L. ITEMS FOR NEXT AGENDA
- M. ADJOURNMENT

Next Meeting: June 15, 2016

NOTE: Persons with disabilities in need of accommodations, contact the City Clerk's office at 955-6520, five (5) working days prior to meeting date.

SUSTAINABLE SANTA FE COMMISSION
INDEX
May 18, 2016

Cover Page		Page 0
Call to Order and Roll Call	The Sustainable Santa Fe Commission meeting was called to order by Ms. Beth Beloff, Chair. A quorum was declared at time of roll call.	Page 1
Approval of Agenda	<i>No Changes to Agenda</i> Commissioner Holian moved to approve the agenda as presented, second by Mr. Schiffbauer, motion carried by unanimous voice vote.	Page 2
Approval of Minutes: April 20, 2016	Commissioner Holian moved to approve the minutes of April 20, 2016 as presented, second by Ms. Smith, motion carried by unanimous voice vote.	Page 2
Communications from the Floor	Introductions – Presentation by Monte del Sol Charter School	Page 2-3
Report from and Assignment of Actioneer	Informational	Page 3-4
Discussion and Action Items: <ul style="list-style-type: none"> - Presentation – Santa Fe Food Policy Council, Morgan Day (Exhibit B) - PNM Rate Case, (Exhibit C) - A Resolution establishing the Verde Fund to reduce systemic poverty, achieve carbon neutrality, and empower Santa Fe's workforce; authorizing the one-time appropriation of \$300,000 of unbudgeted excess land use permit fees (5% of the ¼% GRT effective January 1, 2017); directing the City Manager to present a plan to the Governing Body on steps to implement the Verde Fund [within 90 days]; and allowing for a public hearing to make desired changes to the plan and approve as modified. 	Informational Informational Commissioner Holian moved to approve the Resolution establishing the Verde Fund to reduce systemic poverty, achieve carbon neutrality, and empower Santa Fe's workforce; authorizing the one-time appropriation of \$300,000 of unbudgeted excess land use permit fees (5% of the ¼% GRT effective January 1, 2017); directing the City Manager to present a plan to the Governing Body on steps to implement the Verde Fund [within 90 days]; and allowing for a public hearing to make desired changes to the plan and approve as modified, second by Mr. Hirsch, motion carried by unanimous voice vote.	Page 4-11

- Update: 25-Year Sustainability Plan Updates: RFP Status	Informational	
Items from the Chair and Co-Chair	Reflected above under reports	Page 11
Items from the Commission	Reflected above under reports	Page 11
Items from Staff	Reflected above under reports	Page 11
Items from the Public	Earth Care Composting	Page 11
Items for Next Agenda	County Agriculture Initiative – July Meeting Next Meeting: June 15, 2016	Page 11
Adjournment	There being no further business to come before the Santa Fe Sustainable Commission, the meeting was adjourned at 7:10 pm	Page 12
Signature Page		Page 12

SUSTAINABLE SANTA FE COMMISSION
Wednesday, May 18, 2016 4:00 to 7:10 p.m.
City Councilor's Conference Room, Santa Fe, New Mexico

MINUTES

A. Call to Order

The Sustainable Santa Fe Commission meeting was called to order by Ms. Beth Beloff, Chair at 6:00 pm. A quorum was not present for this meeting.

B. Roll Call

Present:

Beth R. Beloff, Chair
Robb Young Hirsch
Christian Casillas
Kathleen S. Holian
Michael Loftin
Glenn Schiffbauer
Linda Smith
Jack McGowan

Not Present/Excused:

Amanda Hatherly
Tejinder Ciano

Others Present:

The Chair invited those in attendance and the Commission members to introduce themselves.

Mayor Javier Gonzales

Public:

Mariel Nanasi, New Energy Economy	Robert Jessen, Monte Del Sol
Sarah Aagard, Santa Fe Forward	Carol Oppenheimer, Santa Fe Forward
Brent Bernard, Teacher, Monte Del Sol	Morty Simon, Santa Fe Forward
Paul Zelizer, Parent, Monte Del Sol	Morgan Day, Santa Fe Policy Council
Alison Watt, Monte Del Sol Registrar	Seth Roffman, Green Fire Times
Angela Kunkowski, Earth Care	Joe Eiquen, El Dorado, 285 Recycles
Andy Otto, Santa Fe Water Shed	

Students, Monte Del Sol – Jaime Garcia, Rachel Zelizer, Arturo Jessen, Hazel Simmons, Roberto Horta, Esther Kovari, Dan Reaves

Staff Present:

John Alejandro, Staff Liaison
Anna Serrano for Fran Lucero, Stenographer

- C. **Approval of Agenda**
Commissioner Holian moved to approve the agenda as presented, second by Mr. Schiffbauer, motion carried by unanimous voice vote.
- D. **Approval of Minutes: April 20, 2016**
Commissioner Holian moved to approve the minutes of April 20, 2016 as presented, second by Ms. Smith, motion carried by unanimous voice vote.
- E. **Communication from the Floor**

Chair Beloff introduced the teachers and students from Monte del Sol Charter School were introduced. On Earth Day, our school invited experts from the community in different areas of sustainability to work with our students to develop some ideas and suggestions to help our city become carbon neutral by 2040. The students provided a handout in the following areas: (Exhibit A) – Students did an exceptional presentation to the Sustainable Santa Fe Committee members.

- Food and Farming: Expert: Mark Winne, Santa Fe Food Policy Council
- Waste: Experts: Christian Casillas, Santa Fe County Solid Waste
- Electricity: Experts: Craig O'Hare, Santa Fe County
- Consumer Products
- Esther Kovari: Transportation – The city should create more bike lanes on all new roads.

Esther Kovari, Teacher for Monte del Sol Charter School and students proceeded with their presentation. Above are the topics they discussed listing the experts from the Community.

Food and Farming: One recommendation was to have the City of Santa Fe could decrease meat consumption throughout the schools and the city by declaring “Meatless Monday” since Animal Agriculture is a major source of greenhouse emissions. The city could increase the amount of organic waste being composted by partnering with the Farmers Market and issuing credits or coupons for food from the Farmers Market when residents put their food waste out on recycling day. This compost could also be sold to farmers and households to cover the cost of the composting program.

Waste: The second section is what to do with all the waste we produce as a society. One idea was to create a phone Ap to increase the number of people who recycle, residents would take pictures of their recyclables each week and this would be sent to the city and residents would receive points. Develop an Ap that would allow people to scan the product barcode to learn if the packaging is recyclable.

Electricity: Energy and discussion of solar systems for new commercial businesses. This would help turn Santa Fe in to a carbon neutral place that we want it to be. We should take steps to educate on energy usage. The city should get a municipal electric utility to transfer in to renewable energy services.

Consumer Products: In order to promote a sustainable style for recreational activities we could have an outside theater using old recycled cars for seating. Possible promotion of maker's space at Meow Wolf – small entrepreneurs could operate

businesses out of there and recycle materials from consumer products and repurposing items.

Transportation: The city should create more bike opportunities; bike lanes should be required on all new roads.

Thank you for presentation. Great ideas that fit in to working groups with the Sustainable Santa Fe Committee.

Commissioner Holian asked if the students would be willing to make presentation to the Santa Fe County Commission. The teachers and students were complimented and would be happy to present.

F. Report from and Assignment of Actioneer – Linda Smith

- Kathy to send out entire Jemez y Sangre Water Plan to all
- ~~John to invite Erin Ortigoza and Morgan Day to May meeting.~~ **Done**
- John to send out energy report cards to us as they become ready. **There is still work in progress, once the water usage and reports are consolidated, a monthly report card will be done. Possibly in the next month.**
- John to make formal ask of School Board for sustainability programs in schools. **In discussion with Lisa Randall from SFPS, she is providing direction on how to approach the School Board.**
- Working group preliminary summaries to Beth and John by May 18th.
- ~~Slides of Ecoponex presentation to be sent to all.~~ **Done – John will resend to the members. John to add a link on Commission's website for the slides to be posted.**
- Benjamin's contact information to be sent to all.
- Arrange tour of SFCC for Commission. **Keep this on as an action item, when Amanda returns, she can orchestrate this topic item.**
- Meeting to be called for SSFC awards discussion to include Rob Hirsch, John Alejandro, Beth Beloff, Amanda Hatherly and Women of Green people and others if they are interested. **The Chair will arrange a meeting with Women of Green next week in the absence of Ms. Hatherly.**
- Amanda to help Kathy with Water Workshop at SFCC. **There has been communication with Rosemary Romero on Sangre y Jemez, city and county to work on this together in the future. It would be worthwhile to review the draft plan before the deadline as comments were provided. F/U: Commissioner Holian would like some feedback – part of the plan is that a major new source of water may be a transfer of agricultural water rights in to the city and county utilities and she would like feedback on this particular issue. Note these are agricultural water rights.**
- ~~Kathy to send out meeting dates for Agricultural Revitalization Initiative.~~
- Beth to send out email invitation to next Environmental Protection and Restoration Working Group.
- John to find out when the applicant names for the RFP can be released. **Once bid has been awarded.**
- ~~Christian to send invites to Monte del Sol Earth Day Events.~~ **Done**
- ~~Add Councilor Harris to our distribution list.~~ **Done**
- Beth to circulate some samples of science bites to all. TBD

- Send Beth ideas for 5-minute science bites. **The Chair did send them out. Working on 2-minute science bites.**

G. Discussion/Action Items

1. Presentation: Santa Fe Food Policy Council, Morgan Day, Coordinator

Ms. Day noted that there is a huge overlap with the work that they do, Sustainability, conservation of our natural resources, energy conservation and many other issues that relate to sustainability. Ms. Day provided information on what the Santa Fe Food Policy Council does in the city and county and introduced a policy document that is easy to access and understand because it has action oriented items and goals. Many of the goals are directly related to sustainable issues. The Council as noted is a policy organization comprised of 13 members' who are nominated by the city and county and they represent specific stakeholder groups in the community. City staff and county staff are represented; there is also space for non-profit groups, nutrition education, SNAP outreach, groups that are focused on farming or farmers themselves. As an advisory council we work in partnership with our governmental partners as well as community partners and provide advice on food, nutrition, agriculture, health, transportation and land use and conservation. The document provided to the members shows the Food Plan that has been adopted by the city/county. The plan focuses on three main ideas, 1) how we get food in Santa Fe, 2) how we grow food and 3) how we learn about food. The idea is that by focusing on these three main areas, we will not only have less hungry population we will have a healthier population, we will be using our land wisely for food production in ways that will support sustainability and preservation of our natural resources. Ms. Day has worked with Commissioner Holian, Mr. Alejandro and others on creating recommendations for the Climate Action Task Force on food security and the relationship in the way we interact with food and climate change. Recently at the Food Policy Council we went through the recommendations that came out of the Climate Action Task Force in order to prioritize the items. In particular there is one recommendation that overlaps and that is to align public transportation around food to offer locally grown foods. Transportation is not always available to sources where healthy food is grown. We would like to make transportation more accessible.

The Chair and members expressed their thanks to Ms. Day and noted that this information fits well in the Ecoponex goals. They look forward to collaborating with the Food Policy Council. She also mentioned the double up food bucks at Farmers Market which helps those who are on EBT, which doubles the amount they can purchase on fruits and vegetables. The New Mexico Farmers Market Association, Santa Fe Farmers Market Institute and Downtowns Growers Association are working together to get the word out to the farmers and the public for the use of the EBT card. The Chair said they will also help through Outreach. A question came up on the Southside Market – Ms. Day will refer this question to their contact to provide information back to the members through our staff liaison, Mr. Alejandro. The Chair added that this is a perfect example of a successful program operated by the city/county. (Exhibit B)

2. Presentation: PNM Rate Case, Mariel Nanasi, New Energy Economy

Rate request was for \$23 million dollars, rate increases have gone up over 66% and the request now is to increase at 15%. That has amounted to a 401% increase in profits for PNM. The rate increase all share one fact, PNM did no financial analysis in; 1) a \$589 million dollar take or pay coal contract is seeking lost recovery for; (Four Corner Coal Contract is not one of those things that is an asset), because it just goes through a fuel clause which is an automatic payment that PNM and other regulated agencies get to charge. If they incur a cost for fuel we pay it. Unless it is on the burden of others to show it is not prudent and reasonable. This is a \$589 million take or pay coal contract that starts July, 2016 and goes for 15 years until 2031. The market for coal in the United States has been declining rapidly so there is not much of a market for coal, just the fuel. Take or pay means, if you take the coal you pay for it, and if you don't take the coal you still pay for it – there is a term called stranded assets which means if this happened and PNM agreed to it, now if we don't pay them it becomes a stranded asset. There is a way for PNM to get out of the contract, but it takes a couple of years and there is a penalty depending on when it happens would depend on what they have to pay. (More detail was provided by Ms. Nanasi). 2) Increase in pollution controls – we have to reduce carbon pollution 3) EPA promulgated methane rules and the other reason EPA wants to get out of this plan is because of future regulatory risks and future litigation risks. EPA did do a financial analysis and they will be getting out as of July 1, 2016 – EPA will have no more coal in their portfolio and they replaced it with solar and gas. Another thing PNM did without a financial analysis, PNM bought more nuclear at Palo Verde in Arizona. It will not create any jobs in NM; second of all we have not figured out what to do with waste in nuclear production. In addition it is hundreds of millions of dollars we will be locked in for decades. In lease right now they have it depreciated until 2036 that is when the PRC has given them a permit. Ms. Nanasi said in cross examination she asked PNM if they knew what the price of it was before they purchased it and they said, no. The “why” is that they are a monopoly and hoping that the PRC will grant them cluster recovery and that all of us who are PNM rate carriers will pay for it. Thirdly, there was no cost benefit analysis – Vice President of Generations - there is something called balance draft, PNM put it on the San Juan Plant; they are the majority owner of that. No cost analysis was done. Vice President of Generations said that at no time will it make financial sense to put the technology in. That is \$50 million dollars which basically equals over \$1 billion dollar of assets that they are trying to bring in. They want to increase the fixed fee, right now our fee is \$5 and they want to increase it to \$13+ at 163% higher than any among the regional peers in the four corner states. Councilor Ives plans to bring a resolution before the city council to oppose these specific things in their rate case and let the PRC know of that. If that should happen, Ms. Nanasi would like to have the support of the Sustainable Santa Fe Commission and is happy to provide added information on what she has said today. The county of Bernalillo and the city of Albuquerque will also be expressing their concerns as indicated above and the LED light situation. (Fact Sheet was presented to the Chair and will be distributed by staff to the commissioners.) (Exhibit C)

The protocol for a motion to support a future resolution was not a possibility at this time. It has to go through the proper channels and the language has to be reviewed before any action can be taken.

3. **A Resolution establishing the Verde Fund to reduce systemic poverty, achieve carbon neutrality, and empower Santa Fe's workforce; authorizing the one-time appropriation of \$300,000 of unbudgeted excess land use permit fees (5% of the ¼% GRT effective January 1, 2017); directing the City Manager to present a plan to the Governing Body on steps to implement the Verde Fund [within 90 days]; and allowing for a public hearing to make desired changes to the plan and approve as modified.**

Mr. Alejandro addressed this request and stated that the revised resolution was included in the packet. The fund itself will initially be funded for a one-time \$300,000 unbudgeted excess land use permit fees. These are fees that are construction related paid to the city for new development or new construction. The Land Use Department has stated that based on their projections they will have an excess in fees and \$300,000 can go to the Verde Fund.

Mayor Gonzales: Thank you to all of the committee members who have agreed to serve on this commission, this commission is especially important based on the mission to be a carbon neutral community by 2040. It is struggling when we know that families in our community are struggling to make it month-to-month. The idea of the Verde Funds starts by recognizing that there are two major risks to our community when we think about the future and one is climate change. The impact of people living in poverty is huge. There is a lot of evidence around the responsibility and burden that people in poverty have to bear and one is climate change. 25% of our kids go to bed hungry at night, 20% of our families are at poverty level and a large portion look at being homeless. These are realities. We need to start somewhere to acknowledge that the problem exists. The Verde Fund came forward, and I was creative on the funding; we took \$50 million dollars that exists in the Water Company at the time and we invested with the State Investment Council and we took the revenues and use that for the Verde Fund. We have spent the last several months organizing how we would make this happen. The Land Use Department came in with a report stating based on the pipeline of permits that we would have an increase in land use fees estimated at \$3 million dollars over the course of next year which is a good sign that our construction is building up. We asked for \$300,000 from the Council and conditions have been set clearly. We have to set the framework on how the money is going to be expended. We are funding a program that is solely focused on our 2040 goal to reduce poverty, it is about finding the nexus between the two and investing in a program that addresses both. We could think of for example creating revenues for retrofitting homes, weatherizing home, you cut utility costs; you put money in the pockets of people for things that are important for their families. Paying home visitors in early childhood who can do an energy audit on ways to deal with food security and the family. There is a big population and we need to set the criteria on how the money is sent. The \$300,000 is meant to be the igniter, the first push for private industry or philanthropic agencies to step in and offer their help. Other sources are foundations and federal government. The second is to find a sustainable revenue source. This has to be a long term commitment by our city so that every year we know we have a resource to address our components. The Mayor does believe this can be a model for the country; the people sitting around this table possess the expertise to make this program a success in addressing the issues. "In closing, I don't think people wait

until they have all the money in the bank before they choose to say they have a problem and we can't do it now either. We don't have enough money to solve the issues of poverty and climate change in our community. We do have our voice and mechanism through policy, through political and community will to say, yes – this is where we need to solve problems. The city can start with this small investment. We will spend the year with everyone to collaborate and find a sustainable revenue source and be able to move forward.” There are so many places around the city whose functions could be modified to intersect with what we are trying to do; when modified their resources could be extended. You don't need to look further than our water company to know that when we talk about long term water security for our city and when you look at the nexus between energy and water, the water company needs to think aggressively about broadening its mission and its mandate to not only deliver reliable water to our spicket but to make sure that they are investing in some of the issues that address long term water security. Finding a program like that is going to require some policy changes and I have asked the Chair for the Sustainable Santa Fe Commission to work toward and figure out how we can modify it.

Ms. Morgan Day stated that the Santa Fe Food Policy Council is also in favor of the Verde Fund and hopes they receive a favorable vote from the Governing Body.

The Chair acknowledged Santa Fe Forward for their diligent work on the Verde Fund. Mayor Gonzales expressed his thank you and is grateful for the time that is contributed to the city as volunteers on the Sustainable Santa Fe Commission.

Commissioner Holian moved to approve the Resolution establishing the Verde Fund to reduce systemic poverty, achieve carbon neutrality, and empower Santa Fe's workforce; authorizing the one-time appropriation of \$300,000 of unbudgeted excess land use permit fees (5% of the ¼% GRT effective January 1, 2017); directing the City Manager to present a plan to the Governing Body on steps to implement the Verde Fund [within 90 days]; and allowing for a public hearing to make desired changes to the plan and approve as modified, second by Mr. Hirsch, motion carried by unanimous voice vote.

4. Updates: 25-Year Sustainability Plan Updates – RFP Status, plan timeline, committees.

Beth R. Beloff, Chair – RFP Status – The applicants have been narrowed down from 7 to 2, with excellent credentials and they are interested in serving this community. We are down to a decision to hopefully be made before the end of this week. The group that we select will go back through the procurement process. Mr. Alejandro explained the administrative process to get this to City Council for approval. The Chair added that after the interviews they prodded further and asked more questions of both consulting groups on questions that came up and their answers will assist in making the decisions. The Chair said in the bigger picture, the Consultants they have spoken to will probably push their work in to February-March, 2017, they will start sometime in June. The understanding is that before the next budget review we should have good recommendations and ideas on economic aspects that could go before the Finance Committee on the budget process. Mr. Hirsch said he was of the understanding that this work

would be done in December. Mr. Alejandro added clarity to the timeline, we had hoped to have this completed by December and that date will be included in the contract as this is our commitment to the Mayor. As the final contract is discussed we can possibly reset the date. The Chair would like to revisit the scope of work and date; Mr. Alejandro is confident that we can meet the date. All of the consultants that submitted bid understand the scope of work, they are bringing expertise outside of this state, they will take everything that has been done already, they will supplement and include the best practices, and they will evaluate the short term and long term commitment. For all intent and purposes, it is believed they can complete by December. We cannot start any work until the Governing Body has approved the contract and it is reflected in the timeline. It is incumbent to work on the draft; Mr. Alejandro and the consultant can communicate on the work done by the committee.

Education/Environmental Protection and Restoration: (Chair Beloff) The Education working group is operating under the following goals to improve the understanding of the Santa Fe Community, children, student and adults regarding sustainability issues through programs and actions facilitated by the schools in the city, local businesses, non-profits and volunteers. To move the community to action regarding climate change mitigation through educational campaigns, outreach, and planned actions. To empower the community to act on sustainability through public education campaigns, outreach and planned action. To encourage Pre-K – 12 schools and Higher Ed to incorporate sustainability education into its curriculum and activities as a marvel of sustainability and to engage student green teams. They also have short and long term actions. The Chair will send out this list to the members. There is a need for management structure to diffuse sustainability thinking throughout all of the actions of the city and the county.

Robb Young Hirsch – Working group met early part of May, they are focusing on initiating focus group, one is La Familia through Jackie Monroe who works there, one through the SFCC with Emily who works there and is involved in issues regarding diversity. Since that time we learned that the consultant who could be hired is interested in stakeholder engagement and that is a major element of their professional support for what we are doing. Focus groups are important to the consultant as well. We are supportive of the community survey and trying to get it implemented, we will work with the Consultant and the groups we have been reaching out to in the community to match the generous support that Beth was potentially and her husband to put up to do the survey. We are looking at ways that we can work within a current budget to help low income residents and at the same time help sustainability and climate action. We support the Verde Fund and those priorities and we support an ongoing funding mechanism to demonstrate the priority through the funding that is ongoing. The other area where there is a focus is strategic political viability on what we are trying to put forward. We keep on building political viability going forward. The chair states that one key to acquire political viability is community engagement. I place a lot of emphasis on community involvement and hearing what is important to this constituency. We can then decide does the community know about sustainability and climate change. Do we need to do more on outreach and communication? We applaud what you are doing.

Kathleen S. Holian – Food Security – No separate food security sub-committee as the Food Policy Council is doing that. Ms. Day also noted today in her presentation that they address the issues of social equity and sustainability already. Thank you to Morgan Day for the presentation. Mr. Alejandro who serves on the Food Policy Council will bring recommendations to the Santa Fe Sustainable Commission. The area of food security is one of those that clearly cross the boundary between the city and the county. Food security has a lot to do with what happens in the rural areas of our county as well as what is happening in the city. I would like to request as a consideration that the Food Policy Council bring forward recommendations for resolutions or other actions that the County should consider. If there are resolutions that Commissioner Holian should take back to the county for consideration, this information would be helpful. Mr. Alejandro noted that there is a county staff representative on the Actioneer list to be invited to present to the Commission on agriculture and food policy. The county plan should be ready by end of May; the Chair would like to invite them to come to the June meeting.

Water: At the last meeting discussion took place on having a regional workshop gathering at the SFCC to discuss water issues and discussing some of the more controversial features of that. It turns out that the Jemez y Sangre plan has to be turned in by the end of this month and time does not permit for this type of venue. In talking to Mr. Birdman he suggested that the city/county should get together and plan a workshop on this topic. This would be a great recommendation from this commission; this is another area that crosses boundaries. This item should be placed on the Actioneer list. Mr. Alejandro noted that this body cannot pass resolutions; a resolution sponsor would need to be identified through the city. It could be a resolution that asks the City Manager to get together with the County. Mr. Alejandro will do the research on how that works; this should also be added to the Actioneer list. Also to be added is to find a City Councilor who would consider being a sponsor and having Commission Holian coordinate through the county.

Lack of Quorum

Urban Agriculture: Mr. Alejandro reported from last meeting that the Urban Agricultural Ordinance; the City Attorney has some concerns with sections within the ordinance that have an impact on city code. The review of the city code that has to be amended is work in progress to match the requirements of the Urban Ag Ordinance. The hope is to have this come to this commission at the beginning of June.

Linda Smith – Energy group developed a long list of recommendations from the Climate Action task force. Four short term recommendations have been identified and they have also outlined items for the process. Starting with performance contracting and they understand that the city is moving in that direction, establishing a comprehensive plan to optimize a savings to that approach. Another recommendation is PACE - Property Access to Clean Energy and key is to develop a working partnership with Santa Fe County. There is state legislation on this but it directs the county to be the lead. The next piece is to

assure that it is viable by identifying potential commercial projects that could go forward and matching that up with review that it is going to work. Commissioner Holian said it is important to include the County Treasure in this type of topic and discussion. Mr. Alejandro said it is important when the new Sustainable Director for the county comes on board to sit and discuss our priorities and cross over items. The County Manager will be included in these discussions. The timeline to have this person on board is within 1 month. The county would administer this program, procedurally once the Director is on board more detail can be detailed as well as future projects. The Chair noted that the funds for the PACE project would come from them so there would not be a financial burden to Santa Fe County. The amount was not available at this time. The next recommendation which has already been mentioned is the energy report card. The follow up piece is to share with staff and possibly have the City Manager issue and executive order endorse and implement the low cost no cost recommendations. Lastly, relatively new is on take up solar. There is a discovery group with members of the energy group, the city and county and local participants. The group identified issues, barriers and a plan of action with action items to be prioritized and reviewed for stream lining to permitting processes. Parallel to this; an education outreach campaign on cost and financing available for solar.

Mr. Christian Casillas complimented the work of this group. He said he was wondering about the drafts that committees will be submitting, the potential impact, say for example the PACE funding, if you did 30 projects what might the total capacity be in emission reductions. He is looking at the first steps of metrics to understand the carbon mitigation potential. Ms. Smith noted that this is a next step item for the group is to establish measurable content. Mr. Casillas said that even ball park estimates from the team members would be a helpful first step. The Chair noted that another method would be economic development potential. In terms of the education outreach component, Mr. Casillas is working with SFCC on workshops for possibly August and September focusing on educational components pertaining to solar with an audience/participants of home owners, lenders, solar installers and building off some of the barriers. Mr. Alejandro also recommended that energy conservation be a part of that agenda.

Christian Casillas, Climate Group

The group has worked hard and has a draft report that will be done for the next meeting. It includes the estimations for the county, metropolitan planning area and the city and the most complete estimations are at the county level. The Chair asked if this document could be sent in a PDF for comment. Follow up is for Mr. Casillas to meet with Mr. Alejandro and the Chair next week to determine date of release to the commission members. The Chair noted that the interactive map should be included, it was fascinating. You can hover over any city in the US and get an estimate broken down by sector of greenhouse gas emissions.

Justin Green standing in for Amanda Hatherly: Energy Use and Production - Build Environment Green – Land Use – We were tasked with residential and commercial buildings, land use on how you build – we looked at it in a variety of dimensions – including metrics, creating some regulations and maybe some proactivity within the administration. Along those metrics and regulations the areas we would work within would be energy, youth and production, water use

and harvesting and reuse, healthy urbanism and community building and how you develop access to food, jobs and water. In land use, there is a need for affordable units, developing entrepreneurship in land use and this is a creative solution of what we would call Santa Fe Style of residential casitas, etc., to have your grandchildren move on to the property. We have 3 sheets of recommendations. The Actioneer will distribute this list. The Chair said she will be interested in focusing on the Gaps and sharing that with the consultant. Mr. Casillas said that in relation to Land Use we may want to invite someone from the Forest Service, they have done a thorough report on carbon stocks in the Santa Fe National Forest. The chair asked if carbon sequestration is included. Mr. Casillas said that is a big one and there is so much uncertainty in assessing carbon stocks. The report has reference to what carbon stocks use to be historically. The Chair noted that the off-set stock issue is going to definitely be a topic with the consultant. Mr. Alejandro inquired about the presentation time as this would be probably about 1-hour, it could possibly be a special meeting under the working group. It would be good to have consultant present at July meeting for a special commission meeting.

Glenn Schiffbauer - Waste Sub-Committee (Teijinder Ciano)

At the last Waste sub-committee meeting staff from the Environmental Services Division and Solid Waste Management, reported on studies they have been doing with other cities on Zero Waste Plan. A key event is occurring this month, it is the first time Santa Fe County is going beyond their drop off system; they will be getting involved on curb side collection of trash and recyclables through the private sector. It is important to let this Commission know that there will be a public hearing on the 31st of May after 5:00 pm in the Santa Fe County Chambers and most everyone has been e-mailed with the information. Mr. Schiffbauer encouraged attendance; everyone will be allowed 3-minutes to speak. It will show support to the county for recycling.

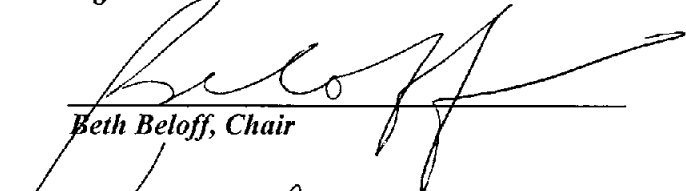
Transportation – A meeting is scheduled for next week with Rio Metro and the North Central RTD. North Central RTD has a new plan as the city with the MPO and discussion will be to see how they can complement each other. MPO is happy to share their plan when the consultants are here.

- H. Items from the Chair and Co-Chair**
None
- I. Items from the Commission**
None
- J. Items from the Staff**
None
- K. Items from the Public**
Earth Care – Compost Santa Fe Campaign – Exhibit D
- L. Items for next Agenda**
County Agriculture Initiative – July Meeting
Next Meeting: June 15, 2016

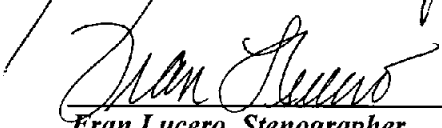
M. **Adjournment**

There being no further business to come before the Santa Fe Sustainable Commission, the meeting was adjourned by the Chair at 7:10 pm


Signature Sheet:



Beth Beloff, Chair



Fran Lucero, Stenographer



Monte del Sol Students Presentation to Sustainable Santa Fe Commission

Wednesday May 18, 2016

On Earth Day, our school invited experts from the community in different areas of sustainability to work with our students to develop some ideas and suggestions to help our city become carbon neutral by 2040. We'd like to present some of these ideas to you today!

Monte del Sol teachers: Bret Bernard, Joan Henderson, Esther Kovari & Rhonda Ward.

Food & Farming:

Expert: Mark Winne, Santa Fe Food Policy Council

- The City could decrease meat consumption (since animal agriculture is a major source of greenhouse emissions), by declaring "Meatless Mondays." Schools and other institutions could serve vegetarian meals every Monday.
- The City could increase the amount of organic waste being composted by issuing credits or coupons for food from the Farmers' Market when residents put their food waste out on recycling day to be composted. In the future this compost could be sold to farmers and households, to cover the cost of the composting program. An incentive system for restaurants could also be implemented.

Waste:

Experts: Christian Casillas

Adam Schlacter, Santa Fe County Solid Waste

- In order to increase the number of people who recycle, and the percentage of waste is recycled, a phone app could be developed by the City. Residents would use this to take pictures of their recycled materials each week, and these would be sent in to the City. Residents would receive points towards incentives like gift cards.
- Another idea is to develop an app that would be able to scan product barcodes, so that people could determine whether the packaging is recyclable.

Electricity:

Expert: Craig O'Hare, Santa Fe County

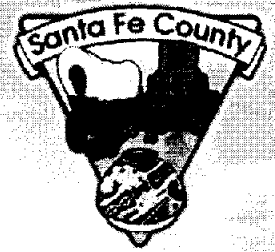
- In order to promote renewable energy, the City should require all new commercial construction to include solar PV.
- All existing commercial parking lot could be required by the City to use a certain percentage of their revenue to go towards installing solar PV in the lot.
- All students in the City should be required to take a class in sustainability every year throughout their school career!
- The City should create a municipal electrical utility.

Consumer products:

- In order to promote more sustainable lifestyles, consuming, and recreational activities, the City, or a private entrepreneur, should develop a new style Drive-In Movie Theater. Old junked cars from junk yards will be used to provide the seating at this theater, and people can ride their bikes or walk there!
- The City could help promote the new "Makers' Space" at Meow Wolf. Small-scale entrepreneurs could operate businesses out of there, that recycle materials from waste consumer products, such as repurposing old clothes into new and fashionable items.

Transportation:

- The City should create more bike lanes, and require bike lanes on all new roads.



Planning for

Santa Fe's Food Future

Querencia---

A story of food, farming and friends

A publication of the Santa Fe Food Policy Council
October 2014



EXHIBIT B

The New Mexico landscape is one of many contrasts:
deserts, mountains, meadows, orchards, and gardens;
dry as the bones in the cemetery, our final resting place.
Part of what defines our *querencia*,
which gives us this sense of place, is our food,
contrary to those who say that there can be no sense of place
in today's global experiment.
And our food cannot be separated from how we work the
land and how we water our crops.

Again we learn from folklore:
paravos, paranos, y para los animalitos de Dios;
for you, for us, and for God's animals (and plants).
Water is a *don divino*, a divine right,
not a commodity to be sold to the highest bidder.
This dry landscape,
with a beauty only we might understand and find sustenance in,
is what defines our *querencia*.

- Estevan Arellano
New Mexican Historian, Farmer, and Writer

TABLE OF CONTENTS

Executive Summary	1
The Santa Fe Food Policy Council	2
Food Plan Method	3
Strengthening the Food System for the Santa Fe Region	4
Food and Agriculture System Map	6
Recommended Policy Interventions	
Getting Food	8
Learning About Food	11
Growing Food	14
Thank You and Acknowledgments	23
At a Glance: Recommendations	24



Executive Summary

Planning for Santa Fe's Food Future was developed by the Santa Fe Food Policy Council to ensure that a safe, healthy, and affordable food supply will be available to all residents for decades to come. This tool examines various issues through the lens of food, including health, distribution, economy, education, agriculture, land and water conservation. It also bridges local, state, and national issues pertaining to food.

The Santa Fe Food Plan recommends a variety of actions designed to promote food security (availability of healthy food, which is affordable to all residents), improve access to retail food outlets that offer healthy and affordable food, encourage healthy eating by all residents to reduce obesity and diet-related diseases such as diabetes, educate consumers, support farmers and ranchers, enhance the food system infrastructure (distribution and storage facilities, transportation, processing), and protect the natural resources necessary to produce food. This is not a static document, but a dynamic one that is meant to be discussed, acted on, monitored, evaluated, and modified periodically.

This plan is divided into three sections: "Getting Food," "Growing Food," and "Learning About Food." Each section provides a list of recommendations that support that respective goal, and each of the recommendations identifies agencies and/or organizations that should take responsibility for its implementation.

In "Getting Food," the Food Plan encourages the Santa Fe community to use all available means to make healthy and affordable food accessible to its residents. To that end, the recommendations ask public officials to ensure that public transportation services can be easily used by residents to connect them to high quality retail food outlets.

The Food Plan's "Learning About Food" section underscores the connection between our food supply and healthy living. "Food is medicine" is not just a saying, but the best guidance one can receive when choosing what to eat and how to prepare it. The recommendations call for the widespread adoption of wellness policies, institutional practices, and educational programs that expand healthy community food environments and encourage responsible food choices for people of all ages.

The "Growing Food" section highlights the critical role that farmers and our region's natural resources play in ensuring our food supply. The recommendations strongly urge that city and county governments use all available authorities to promote new and existing gardening, farming, and ranching opportunities.

The Santa Fe Food Policy Council is respectfully requesting that the Santa Fe City Council and the Santa Fe Board of County Commissioners adopt *Planning for Santa Fe's Food Future: Querencia, A Story of Food, Farming, and Friends*. If adopted, the Food Plan should become the guiding document for City and County officials, food and farm organizations, and a variety of community groups that support healthy living, resilient communities and robust economies. It is expected that the full implementation of the Food Plan's recommendations will occur over three years. This collaborative effort is our foundation from which we build a food system that nourishes all people in our community in a just, sustainable, and regenerative manner.



The Santa Fe Food Policy Council

Starting more than 30 years ago, academic experts and food activists began to see that the food system was touching more and more parts of our lives. Environmental issues, public health, issues of social and economic justice were all part of a food system and had a direct bearing on the food we ate.

Food experts and activists realized that our food system was influenced by many factors including the marketplace and actions of local, state and federal governments. However, the average citizen didn't have much of a role in shaping them. One way to address this lack of participation was by creating food policy councils, to bring together all stakeholders in a community and give them a say in constructing a system that reflected their values.

Today's food policy councils come in different sizes and sometimes address different issues. But at heart they reflect the idea of food democracy. Achieving the goal of food security means bringing the bulk of society to work together to ensure there's enough affordable, easily accessible, and nutritious food for everyone.

Our local contribution to the growing national food policy council movement is the Santa Fe City and County Advisory Council on Food Policy. Established in 2008 by a joint City/County resolution, the Council's creation acknowledges a shared commitment to and concern for improving the local food production system and the importance of a vibrant and accessible "food future" for Santa Fe.

The Council is devoted to recommending laws, rules, and regulations that create and maintain a reliable and sustainable food system that nourishes everyone in the community. For more information, please go to www.santafefoodpolicy.org.



Food Plan Method

The Food Plan is the culmination of extensive community-level research that included interviews with hundreds of citizens, public and private officials, and food system stakeholders. It draws on the latest food, farm, and health related data relevant to the Santa Fe community. A review of current food system policies, programs, and regulations was also conducted. To the greatest extent possible, the Food Plan has aligned its recommendations with existing city and county plans including the County Health Action Plan, the County Sustainable Growth Management Plan, and the Sustainable Santa Fe Plan.

Data was referenced from a variety of resources available to our community: the Santa Fe Food Policy Council's Community Food Assessment, Santa Fe County 2013: A Community Health Profile, The Santa Fe County Health Action Plan, The City of Santa Fe's Sustainable Santa Fe Plan, The Sustainable Growth Management Plan (SGMP), and The Sustainable Land Development Code (SLDC), as well as a number of other local and state-wide research publications.

The Santa Fe Food Policy Council embarked upon a county-wide interview process, conducting over 60 interviews with stakeholders working in positions which relate to food access, health, education and production. We also held 6 Food Plan dialogue sessions in settings throughout Santa Fe County to learn about community members' first-hand experiences and priorities.

This process gave us the opportunity to understand how community members, agencies and Santa Fe City and County employees view their roles in changing the local food system. We inquired about the successes and challenges individuals have encountered while they live and work in the local food system. We captured visionary statements about how to improve our local food system relative to folks' daily routines, including how they take care of their families, make food choices, and interact with friends and neighbors to celebrate food.



Strengthening the Food System in the Santa Fe Region

New Mexico has a rich agricultural heritage; the land we call home has been in production for thousands of years, supporting diverse populations throughout history. Farming and ranching have shaped lives and landscapes for many generations and this deeply forged connection is a unique part of our culture which remains intact amidst advancing technology of this age.

Today, the potential for our regional food system is unprecedented. New Mexicans, like many Americans, get most food from supermarkets which are served by vast and complex networks of transportation and storage. Veins of food travel throughout the country and world to reach homes here in Santa Fe County, with external producers and processors currently providing up to 98% of the food we access. Yet, another system exists within the national food network. Local markets in New Mexico and all over the country are increasingly providing a diversity of products which change with the seasons and celebrate wondrous varieties of regional seed stock. These local markets range from supermarkets that highlight local food to schools and other institutions buying more from local growers to farmers' markets, where the growers sell directly to the people.

The desire for bananas in winter and tastes from local soil necessitate a balanced partnership of local and global food supplies. We have an opportunity to blend the best of these systems and to create a resilient network of food. This work is essential as we strive to provide a range of culturally appropriate, affordable, and nutritious options for all Santa Fe City and County residents. It is important to be informed about how we can strengthen our food system for three major reasons:

1. Anyone who eats has a stake in the food system. Every dollar spent has a great impact. When we buy food for our family we are essentially voting by helping to make decisions about the cost of different types of food, which companies and businesses we want to see thrive, even what is on the shelves of the grocery store next time we go to shop.
2. Informed residents can help shape government policies that control food production and the availability of food products. These policy decisions include what foods will be supported through subsidies, what taxes and regulations farmers will be required to comply with, and what foods are available at what cost and where.
3. While many of us may take our food for granted, there are at least 21,270 individuals (14.9 %) living in Santa Fe County who do not know where their next meal comes from. This is equal to two times the total population of Espanola, New Mexico.





Within the City, nearly 10% of low income families live a mile or more from the nearest grocery store. These individuals not only have difficulty accessing healthy foods, but increasingly find themselves faced with only unhealthy food choices as nearly one-third of the restaurants in the county are fast food. Such limited access also contributes to a growing rate of obesity. With almost 30,000 county residents experiencing the effects of obesity, the current generation of youth is poised to be the first generation with a lower life expectancy than that of their parents. Limited access to fresh, affordable foods is a challenge for many of us. Thus, strengthening the food system in the Santa Fe region should be considered a major goal of our community.

For many, our relationship with food is changing. Our increased dependency on convenient and low cost food options means we rely more and more on heavily processed foods. Schools, senior centers, hospitals, and even restaurants are forced to view price as the deciding factor when choosing what ends up on the menu. These factors limit our ability to make independent food choices, to retain our cultural food traditions and to live healthy, active lifestyles.

While this is our current reality, let us work together to create an alternative.

Let us imagine a world in which:

- ✎ **food is valued at its true cost, while remaining available & affordable for all**
- ✎ **farmers and ranchers can make a living stewarding our rich agricultural traditions**
- ✎ **our respect for the land is upheld by all who inhabit it**
- ✎ **healthy foods color the plates of our children, elders and families**
- ✎ **food choices are determined not by price, but by what is good for our bodies and supports our traditions**
- ✎ **regulations are common sense and policies support our vision**
- ✎ **food is simple, celebrated, and of course, local**

"We have made the food system that we have... we have made it the way it is and we can make it a different way."

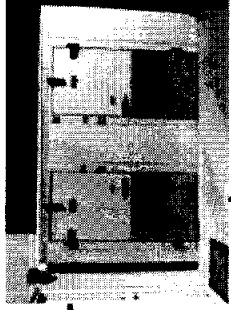
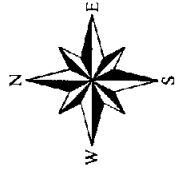
- Ricardo Salvador, Union of Concerned Scientists

SANTA FE COUNTY

Food & Agriculture System Map

Legend

- Farmer's Markets
- Food Programs*
- Senior Centers
- Food Stores
- Irrigated Land
- Cultivation Areas **
- Grazing Areas **
- Community Plan Areas
- Rail Runner/BNSF
- Major Roads
- Incorporated City Boundaries
- Santa Fe County Boundary



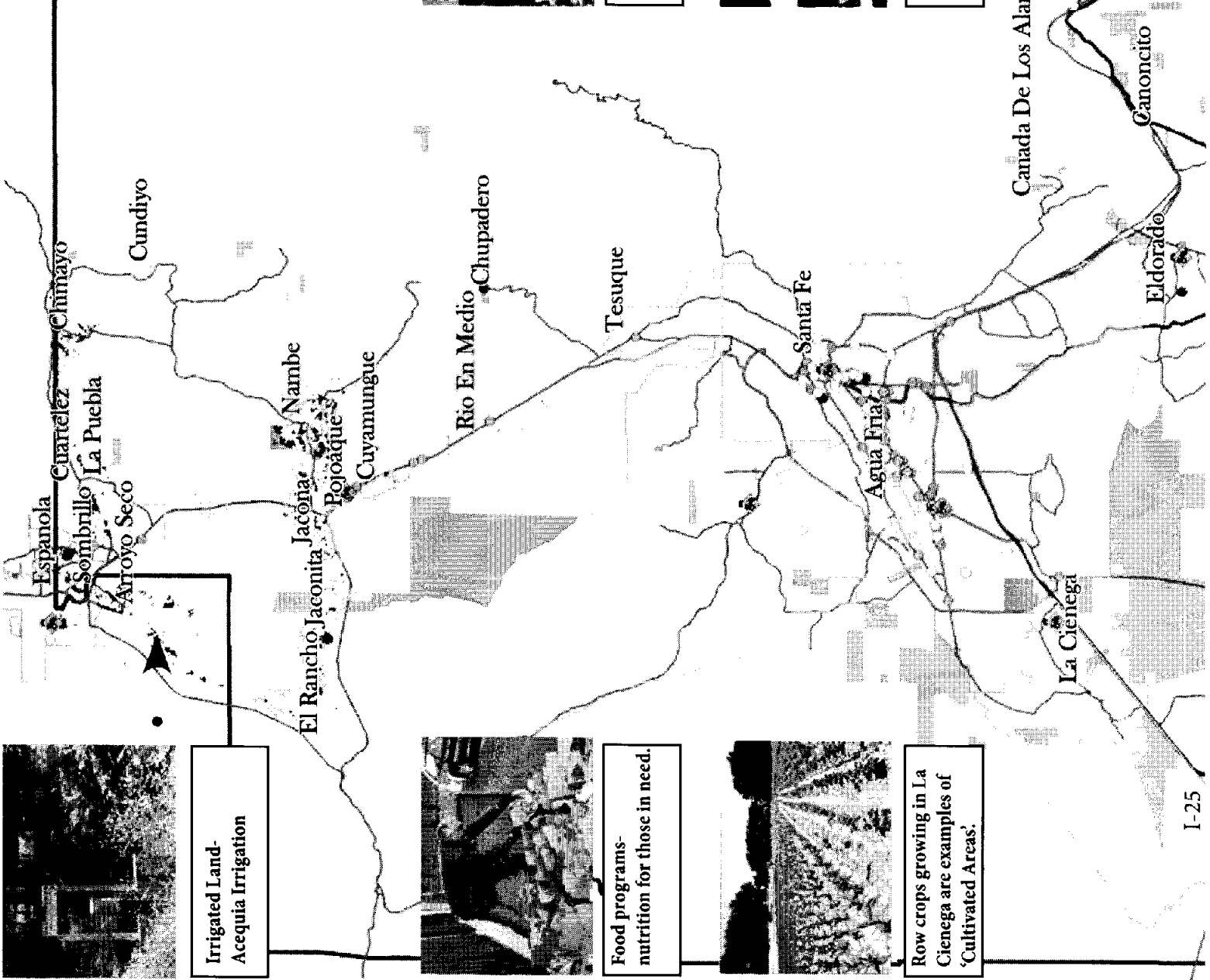
Cold storage for local food is an important part of safe food transport



Seed saving ensures a future supply of local, traditional food.



Farmers Markets growing throughout the County.



Irrigated Land- Acequia Irrigation



Food programs- nutrition for those in need.



Row crops growing in La Cienega are examples of 'Cultivated Areas'.

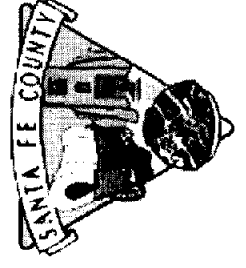
*Food Programs include non-profits, social aid, and emergency food programs which provide free and/or discounted food for those in need.

**Cultivation and Grazing Areas' are based on 2014 Agricultural Exemptions, parcel data from the County Assessors office. The properties identified on this map have been granted an Agricultural Exempt status based on agricultural cultivation or grazing activity occurring within the property, which may be only a portion of the entire property.

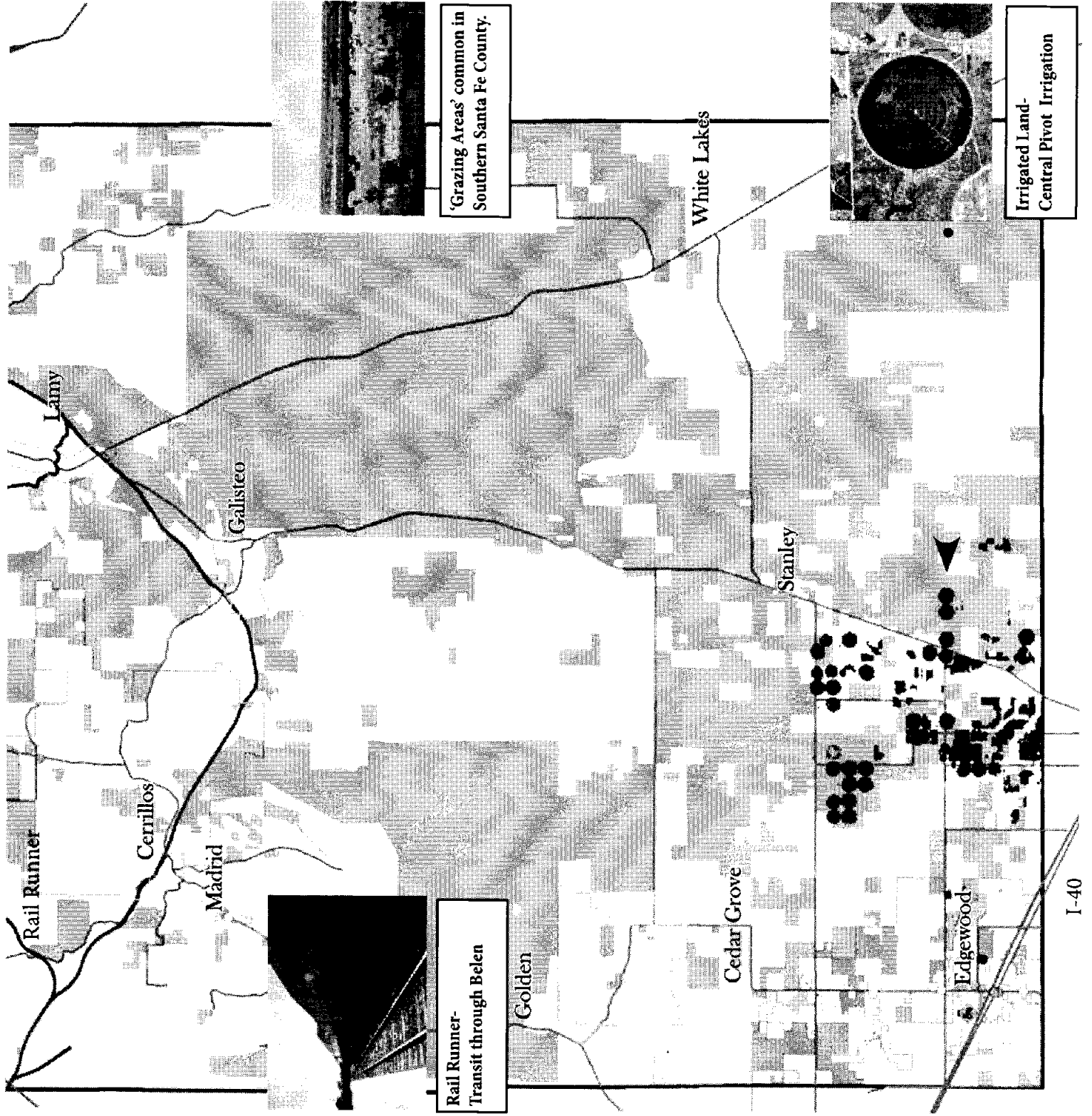
2008 Orthophotography

This information is for reference only. Santa Fe County assumes no liability for errors associated with the use of these data. User are solely responsible for confirming data accuracy.

Food access points data-2010
Area of grazing/ cultivation data-2014
Irrigated land data-2010



October 1, 2014



GETTING FOOD

Our vision for connecting diverse communities throughout the Santa Fe region to a reliable supply of healthy and affordable foods is rooted in building knowledge of available assistance programs and resources, as well as ensuring that these foods are readily available in local stores, farmers markets, senior centers, hospitals, and schools.

Goal 1: Improve residents' ability to access fresh, nutritious food.

- ✎ **Require public transportation routes to be aligned with food outlets that offer a full range of whole and fresh food options.**
Potential Partners: Santa Fe Trails, North Central Regional Transit
- ✎ **Require City- and County-operated institutions include an increasing amount and variety of local food in their meal service programs to a maximum feasible percentage.**
Potential Partners: Santa Fe County Community Services Department, City of Santa Fe Community Services, Area Agency on Aging, Santa Fe Public Schools, PED, CYFD
- ✎ **Support provision of infrastructure and programming to improve food access in rural and under-served areas.**
(Santa Fe County Sustainable Growth Management Plan, 2010, strategy 15.4.1, page 86.)
Potential Partners: Santa Fe County Growth Management Department
- ✎ **Increase seniors' awareness of various food assistance programs.**
Potential Partners: Santa Fe County Community Services Department, New Mexico Income Support Division (ISD) Santa Fe County Office, non-profits, City and County Senior Centers administration and staff

Goal 2: Promote self-reliance, family gardening, and food storage.

- ✎ **Conduct education and outreach campaigns which emphasize self-reliance as a cornerstone of sustainability.**
Potential Partners: Sustainable Santa Fe Commission, City of Santa Fe Environmental Services, Santa Fe City Council, Santa Fe Board of County Commissioners
- ✎ **Inspire our community to integrate emergency preparedness into our daily lives through various lifestyle shifts, from smart shopping techniques for storing food reserves to revitalizing food preservation and storage traditions.**
Potential Partners: Santa Fe County Emergency Management, New Mexico State Extension Service, City of Santa Fe Emergency Management, non-profits
- ✎ **Sponsor a "Grow Up Gardening" campaign which highlights creative and fun food production techniques tailored to families, including container and vertical gardening techniques for limited space.**
Potential Partners: Food for Santa Fe/Feeding Santa Fe, Santa Fe Farmers Market Institute, areas nurseries, and food retail outlets that offer seasonal plant starts





Goal 3: Prioritize getting local, fresh food into schools.

- ✎ Support and advocate for universal free school meals, which would make free healthy schools meals the norm for all children, regardless of family income.
Potential partners: NM State Legislature, NM's congressional delegation, the New Mexico Food and Agriculture Policy Council, New Mexico School Nutrition Association
- ✎ Continue to support Farm to School educational activities currently taking place within our schools, such as on-site school gardens, food system and farming curriculum, fruit and vegetable tastings, culinary programs, field trips to local farms and venues, farmers in the classroom, and food system entrepreneurship programs.
Potential Partners: Santa Fe Public Schools, Santa Fe Farm to School Coordinator, Cooking With Kids, the New Mexico Food and Agriculture Policy Council, Farm to Table, school district administration and staff across Santa Fe County, area farmers, and non-profits
- ✎ Work with School Food Service Directors and District Procurement offices to increase the availability of local foods in schools by setting up sustainable systems to purchase foods from local farmers, including standing purchase orders and bid processes that emphasize local purchasing.
Potential Partners: School District Procurement Offices, School Food Service Directors, Farm to Table, Cooking with Kids, the New Mexico Food and Agriculture Policy Council

Goal 4: Promote existing food assistance programs.

- ✎ Demonstrate and promote creative uses of Supplemental Nutrition Assistance Program (SNAP) benefits—from tips for shopping on a budget to home gardening using seeds and plant starts available for purchase with monthly assistance benefits.
Potential Partners: New Mexico ISD Santa Fe County Office, Santa Fe Farmers Market Institute, Local Organic Meals on a Budget, Homegrown NM
- ✎ Promote innovative programs aimed at increasing access to fresh, local food, such as the Southside Farmers Market and Santa Fe Farmers Market Double Buck Days which provide SNAP recipients with additional funds to shop at local farmers markets. Encourage clear signage at farmers markets and outreach about the WIC and Senior Farmers Market Nutrition Programs.
Potential Partners: Santa Fe Farmers Market Institute, New Mexico ISD Santa Fe County Office, NM Department of Health, Kitchen Angels, non profits
- ✎ Organize volunteers to collect leftover crops from local farms to expand the availability of fresh food at area food banks/food pantries.
Potential Partners: Food for Santa Fe/Feeding Santa Fe, The Food Depot, area farms, non profits

“No one in Santa Fe should go hungry”

- Carmichael Dominguez , Santa Fe City Council, District 3

Goal 5: Celebrate local food and support regional food economy.

- ✎ **Grow the demand for local food by organizing an outreach campaign aimed at educating and inspiring residents to buy local.**
Potential Partners: Santa Fe County Planning Division-Economic Development, Santa Fe Food Policy Council, Santa Fe Farmers Market Institute, New Mexico Farmers Marketing Association, NMDA Taste the Tradition and Grown with Tradition, area food retail, non-profits, community members, farmers
- ✎ **Develop a locally based approach to address concerns of consumers and producers about the potential impacts of Genetically Modified Organism (GMO) food consumption and production in the region.**
Potential Partners: Joint City-County GMO Task Force, Homegrown NM, Santa Fe County Extension, non profits and initiatives
- ✎ **Implement innovative strategies that support local economic development efforts such as mobile grocery stores and food carts to bring locally produced food into under-served areas of the county.**
Potential Partners: City of Santa Fe Economic Development, Santa Fe County Economic Development, North Central New Mexico Economic Development District, MoGro Mobile Grocery
- ✎ **Work with Santa Fe City and County to develop urban agriculture ordinances.**
Potential Partners: Santa Fe County Extension, Santa Fe Food Policy Council--Land Use subcommittee, Gaia Gardens, Homegrown NM, non profits
- ✎ **Maximize the efficiency of existing Community Commercial Kitchens and assess the need for additional facilities in order to enhance the economic potential of local value-added products and traditional foods**
Potential Partners: City of Santa Fe Economic Development, Santa Fe County Economic Development, Santa Fe SCORE, Southside Merchants Association , Santa Fe Business Incubator, Pojoaque Pueblo, non-profits, community members
- ✎ **Work with New Mexico regulatory agencies to streamline the process by which local producers and food processors can become certified for value added products.**
Potential Partners: City of Santa Fe Economic Development, Santa Fe County Economic Development and Planning Division, New Mexico Environment Department, New Mexico Food and Agriculture Policy Council, Farm to Table
- ✎ **Develop City and County Start-Up Resource Guides to help new entrepreneurs meet the requirements for starting food retail or agricultural businesses.**
Potential Partners: City of Santa Fe Economic Development, Santa Fe County Economic Development, Santa Fe Chamber of Commerce, Santa Fe Green Chamber of Commerce, Santa Fe Hispanic Chamber of Commerce



“We don’t just want to do more and more, we want to do more and better”

- Viola Lujan , Food Depot, Program Manager

LEARNING ABOUT FOOD

Our vision for food education is to equip residents with the knowledge, skills, passion and environment to make healthy choices for themselves, their families, and the community.

Goal 1: Expand opportunities for creative and experiential learning through cooking and nutrition

- ✎ **Align Farm to School curriculum with required district and testing standards to ensure that lessons are beneficial to students' learning processes and are reinforced across subjects.**
Potential Partners: Santa Fe Public Schools, Santa Fe Farm to School Coordinator, Cooking With Kids, school district administration and staff across Santa Fe County
- ✎ **Collaborate with area non-profits and agencies to conduct educational trainings that will clarify food safety requirements for using fruits and vegetables grown in our community, senior center, and school gardens in our local institutions.**
Potential Partners: New Mexico Environment Department, National Farm to School Network, Farm to Table, New Mexico State Extension Service, and the New Mexico Department of Agriculture (NMDA)
- ✎ **Develop education classes for parents and children that connect Farm to School activities with at-home cooking practices to help youth create lasting lifestyle shifts for themselves and their families.**
Potential Partners: National Farm to School Network, Local Organic Meals on a Budget, Cooking With Kids, Santa Fe Community College Culinary Arts program, school administration and staff, Americorps, Food Corps, and non-profits
- ✎ **Encourage area non-profits to develop nutrition education and cooking programs tailored to the needs of tribal communities such as shopping on a budget, meeting special dietary needs, and learning creative ways to utilize commodity foods.**
Potential Partners: Indian Health Services, Eight Northern Indian Pueblos Council (ENIPC) Commodity Foods Distribution Program, Tewa Women United, Cooking with Kids, Local Organic Meals on a Budget, Santa Fe Community College Culinary Arts program and other non-profits
- ✎ **Develop nutrition/healthy cooking classes and educational materials, with an emphasis on reaching people at higher risk for food insecurity and diet-related health concerns.**
Potential Partners: Santa Fe Community College, Cooking With Kids, Kitchen Angels, Food Depot, area culinary schools, La Familia Medical Center, Adelante, Youth Shelters and Family Services, and other non-profits



- ✎ **Work with local non-profits to develop culinary programs aimed at seniors that promote increased knowledge about cooking techniques, diversity of dishes and nutrition information.**

Potential Partners: Santa Fe County Community Services, City of Santa Fe Community Services, City and County Senior Center staff, Cooking with Kids, Local Organic Meals on a Budget and other non-profits

- ✎ **Work with area governmental departments, agencies, and organizations to develop prevention and management programs for diet related conditions to help transition folks' diets to meet medical needs in a way that is achievable and culturally appropriate.**

Potential Partners: Santa Fe County Community Services, City of Santa Fe Community Services and Wellness Coordinator, Christus St. Vincent Regional Medical Center, La Familia Medical Center and other medical clinics, Pueblo of Pojoaque Wellness and Healing Arts Center, Tewa Women United, the Flowering Tree Permaculture Institute: Pre-Contact Diet Project - Pueblo Food Experience, Kitchen Angels and other non-profits

Goal 2: Promote the development of healthy and safe built environments.

- ✎ **Work with City and County Land Use to develop Complete Streets Resolutions aimed at making our neighborhoods more attractive, accessible, and safe. Complete Streets is a national program that attempts to promote physical activity by making streets safe and functional for all drivers, pedestrians, and bicycles.**

Potential Partners: Santa Fe City Council, Santa Fe County Board of County Commissioners, City of Santa Fe Land Use, Santa Fe County Growth Management and Land Use, neighborhood associations

- ✎ **Establish "healthy food zones" near schools and public institutions to promote the availability of nutritious food and limit the marketing and availability of unhealthy foods.**

Potential Partners: Santa Fe City Council, Santa Fe County Board of County Commissioners, City of Santa Fe Land Use, Santa Fe County Growth Management and Land Use

- ✎ **Increase opportunities for school-based events which emphasize fun physical activities for youth such as walking school buses (an alternate form of student transport: students are chaperoned by two adults while walking to school), the Bike Rodeo, and Girls on the Run**

Potential Partners: School District administration and staff, La Familia Medical Center, REACH Community Leadership Team (CLT), non-profit organizations





Goal 3: Expand and diversify opportunities to access food assistance.

- ✎ Reinforce nutrition education and access by providing enrollment services, information, and vouchers for fresh, whole foods at area health care and senior centers

Potential Partners: La Familia Medical Center, REACH Community Leadership Team (CLT), New Mexico Income Support Division (ISD) Santa Fe County Office, New Mexico Farmers Marketing Association, City and County Senior Centers administration and staff, Santa Fe County Community Services, City of Santa Fe Community Services, non-profits

- ✎ Expand food assistance programs to meet specialized dietary needs and cultural preferences and to offer availability during the times and days many folks can most conveniently utilize their services, such as evenings and weekends.

Potential Partners: New Mexico ISD Santa Fe County Office, non-profits, food banks/pantries, and shelters

- ✎ Collaborate with area tribal governments, agencies, and organizations to ensure their communities have equal access to information and enrollment services for a variety of different assistance programs available to residents of Santa Fe County.

Potential Partners: Eight Northern Indian Pueblos Council (ENIPC) Commodity Foods Distribution Program, New Mexico ISD Santa Fe County Office, non-profits

Goal 4: Align and publicize wellness policies throughout the Santa Fe region.

- ✎ Support Implementation of school wellness policies that align with federal requirements with achievable goals that are culturally appropriate for the students, families, and staff they serve.

Potential Partners: School District administration, School Health Advisory Council (SHAC) nurses, and staff

- ✎ Support wellness policies for Santa Fe City and County employees and their families, which offer incentives, and innovative solutions to maintaining good nutrition and active lifestyles; institute a "Farm to Work" CSA program that brings local produce to the workplace.

Potential Partners: City of Santa Fe Wellness Coordinator, Santa Fe City Council, Santa Fe County Human Resources, Santa Fe Board of County Commissioners, Santa Fe Farmers Market Institute.

- ✎ Encourage private sector wellness initiatives, incentive programs and policies that contribute to the well-being of employees and their families.

Potential Partners: Whole Foods Market, La Montanita Co-op, other businesses

"We should learn to value food as we value ourselves"

- Lynn Walters , Cooking with Kids, Executive Director

GROWING FOOD

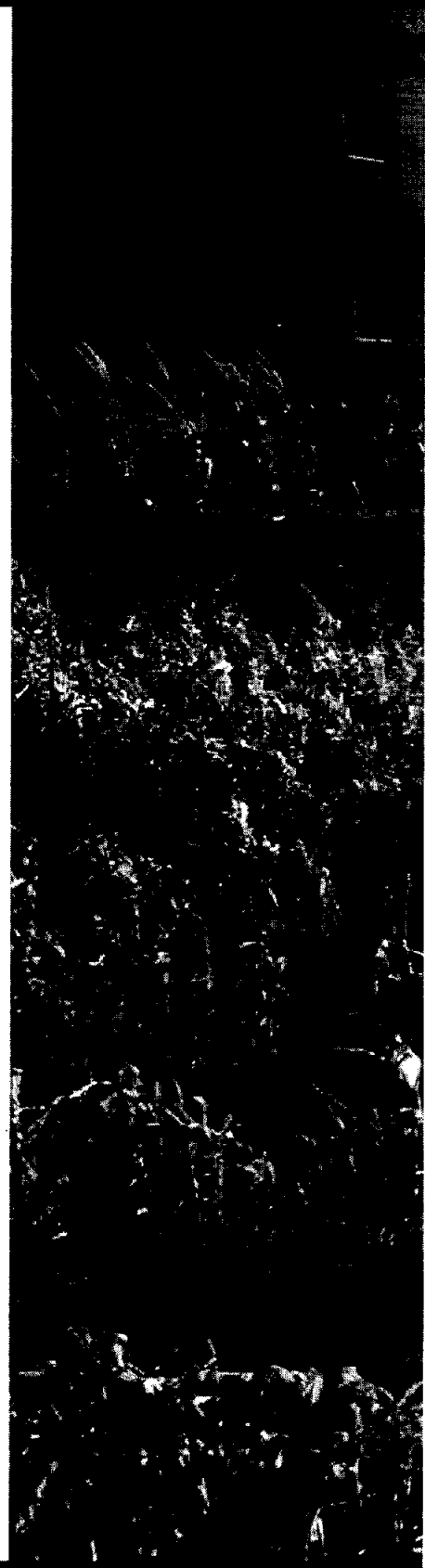
Our vision for food production in Santa Fe City and County views farming and ranching as an economically viable way of life that promotes stewardship of the land and resources. This vision supports food security through the integration of sustainable agricultural practices into the built environment.

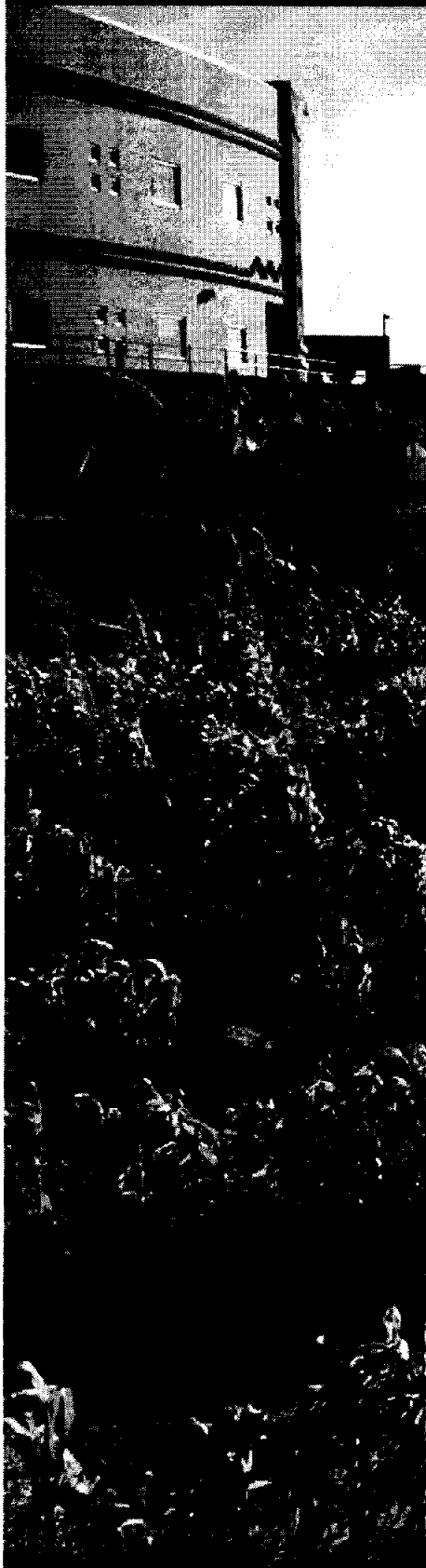
Goal 1: Increase the impact and efficiency of community gardens.

- ✎ **Enforce existing water conservation policies for community gardens. This will encourage appropriate growing methods that support efficient water usage and minimize negative environmental impacts.**
Potential Partners: City of Santa Fe Parks Division, Community Garden Council, Homegrown NM, Santa Fe Watershed Association
- ✎ **Support development of community gardens that create educational opportunities with diversified crops.**
Potential Partners: City of Santa Fe Parks Division, Community Garden Council, Homegrown NM, Santa Fe County Open Space, Santa Fe Community College, Institute of American Indian Arts
- ✎ **Define the populations intended to be served by community gardens and develop policies that ensure those populations have access and education to benefit from the increased food security of those gardens.**
Potential Partners: City of Santa Fe Parks Division, Community Garden Council, Homegrown NM, Earth Care, Somos un Pueblo Unido
- ✎ **Support the development of community gardens and other agricultural projects by providing water, land, and infrastructure on County or public land where appropriate. (Santa Fe County Sustainable Growth Management Plan, 2010, strategy 15.5.1, page86.)**
Potential Partners: Santa Fe County Open Space and Trails program, Santa Fe County Growth Management Department
- ✎ **Allow the option for community gardens to be considered as part of the open space requirements for new developments. (Santa Fe County Sustainable Growth Management Plan, 2010, strategy 15.5.2, page86.)**
Potential Partners: Santa Fe County Open Space and Trails program, Santa Fe County Growth Management Department

Goal 2: Develop on-site gardens at senior centers to increase the availability of fresh and local foods for seniors.

- ✎ **Design sustainability plans for senior center gardens to ensure they have operational support, are economically self-sufficient, and are integrated into the community.**
Potential Partners: Santa Fe County Community Services, City of Santa Fe Community Services, City of Santa Fe Parks Division, Santa Fe County Open Space and Trails program, Homegrown NM, non-profits





- ✎ **Connect garden coordinators to resources, technical support, and educational opportunities available within Santa Fe County.**
Potential Partners: Santa Fe County Community Services Department, City of Santa Fe Community Services, Santa Fe Community College, Institute of American Indian Arts (IAIA), Homegrown NM, non-profits
- ✎ **Develop the plan by which fruit and vegetables grown in senior center gardens can be practically harvested, washed, stored and integrated into food preparation for senior center meals.**
Potential Partners: Santa Fe County Community Services Department, New Mexico Environment Department, National Farm to School Network, Farm to Table, New Mexico State Extension Service

Goal 3: Increase the number of school gardens aimed at helping youth learn about food, farming, and healthy lifestyles.

- ✎ **Develop and implement plans for school gardens that address the need for continuing support from the school district and community. Encourage schools to use school gardens as outdoor classrooms, integrating learning about food into the school day, cafeteria meals, and afterschool and summer programs.**
Potential Partners: National Farm to School Network, school district administration and staff, Americorps, Food Corps, non-profits
- ✎ **Work with school administration and local governments to develop joint use agreements establishing community gardens on school grounds. This will increase opportunities for multi-generational and multi-cultural learning and help gardens become long-term resources that serve the entire community.**
Potential Partners: City of Santa Fe Community Services, Santa Fe County Community Services, school district administration and staff, non-profits
- ✎ **Develop partnerships with the Santa Fe Community College and/or other academic institutions to deliver arid-land agriculture training for residents and people pursuing careers in food production.**
Potential Partners: Santa Fe Community College, Sustainable Santa Fe, Santa Fe Community Farm, IAIA

Goal 4: Conserve water through educational programs, incentives, and policies.

- ✎ **Design educational landscapes in urban and rural settings that demonstrate the range of possibilities for water conservation, including harvested rainwater, xeric irrigation, re-vegetation and supplementing food production.**
Potential Partners: City of Santa Fe Water Division, Santa Fe County Water Policy Advisory Committee, City of Santa Fe Environmental Services Department, Santa Fe Watershed Alliance, non-profits, Sustainable Santa Fe

“The West was built on working landscapes, which are currently vulnerable to loss”
– Coleen Baker, Santa Fe County, Open Space Trails Program Manager

- ✎ **Require that urban farms that grow produce for sale or to donate to organizations that address food insecurity must provide a water use plan including a water budget for plantings and water sources which minimize the use of municipal drinking water for crop irrigation.**
Potential Partners: City of Santa Fe Water Division, Santa Fe County Water Policy Advisory Committee, City of Santa Fe Environmental Services Department, Santa Fe Watershed Alliance, non-profits, Sustainable Santa Fe
- ✎ **Support rebates and other incentives for agricultural use such as rain barrels, drip-irrigation, composting systems, and water conservation techniques in areas where appropriate.(Santa Fe County Sustainable Growth Management Plan, 2010, strategy 16.2.1, p. 87.)**
Potential Partners: City of Santa Fe Water Division, Santa Fe County Water Policy Advisory Committee, City of Santa Fe Environmental Services Department, Santa Fe Watershed Alliance, non-profits, Sustainable Santa Fe
- ✎ **Support the use of rain fed agriculture where collected water is used to irrigate crops. (Santa Fe County Sustainable Growth Management Plan, 2010, strategy 16.2.2, p. 87.)**
Potential Partners: Santa Fe County Growth Management Department, City of Santa Fe Water Division, Santa Fe County Water Policy Advisory Committee, City of Santa Fe Environmental Services Department, Santa Fe Watershed Alliance, non profits, Sustainable Santa Fe
- ✎ **Support farming techniques that facilitate the conversion from spray irrigation-based practices to lower water use systems such as no-till, drip irrigation, and/or greenhouse based agriculture. (Santa Fe County Sustainable Growth Management Plan, 2010, strategy 16.2.3, p. 87.)**
Potential Partners: Santa Fe County Growth Management Department, Santa Fe Watershed Association, New Mexico Acequia Association, Natural Resource Conservation Service (NRCS), New Mexico State Extension Service
- ✎ **Create educational programs that highlight our watershed, related policies, and water conservation tips.**
Potential Partners: City of Santa Fe Water Division, Santa Fe County Water Policy Advisory Committee, City of Santa Fe Environmental Services Department, Santa Fe Watershed Association, New Mexico Acequia Association, non-profits
- ✎ **Develop and publicize incentive programs to reduce in-home water use by utilizing gray water and rainwater for irrigation and other purposes that do not require potable water.**
Potential Partners: City of Santa Fe Water Division, Santa Fe County Water Policy Advisory Committee, City of Santa Fe Environmental Services Department, Santa Fe Watershed Alliance, non-profits



“Self-reliance is a cornerstone of sustainability”

– Martin Vigil, Santa Fe County, Emergency Management Director



Goal 5: Increase the viability and presence of local gardens, farms and ranches.

- ✎ **Work with Santa Fe County to incorporate land use allowances for agricultural activity into the Sustainable Land Development Code.**
Potential Partners: Santa Fe County Growth Management Department, Santa Fe County Board of County Commissioners, Water and Soil Conservation Districts, local farmers, non-profits
- ✎ **Create a LandLink program which connects landowners in Northern New Mexico with farmers who need land; Also provides opportunity to connect new farmers with experienced mentors.**
Potential Partners: Santa Fe Food Policy Council-Land Use Subcommittee, Santa Fe County Growth Management Department, North Central New Mexico Economic Development District
- ✎ **Collaborate with area agencies and organizations to help small and medium scale farms meet market-based and Federal food safety requirements.**
Potential partners: New Mexico State Extension Service, New Mexico Department of Agriculture, Farm to Table
- ✎ **Design and implement a City Harvest program, (as detailed in the Sustainable Santa Fe Plan), to create multiple growing, processing, storing and selling opportunities. (Sustainable Santa Fe Plan, 2008, Proposed Action 10-2 under Food Production, page 29-30.)**
Potential Partners: Santa Fe County Growth Management Department, City of Santa Fe Water Division, Santa Fe County Water Policy Advisory Committee, City of Santa Fe Environmental Services Department, Santa Fe Watershed Alliance, non-profits, Sustainable Santa Fe
- ✎ **Develop a Commercial Scale Urban Agricultural Permit to protect both neighborhood and agricultural interests within the City by setting policies for uses including, but not limited to water conservation, embedded greenhouse gas footprint, traffic, sales, employees, volunteers, visitors and community educational benefits.**
Potential Partners: City of Santa Fe Land Use and Zoning Department, Santa Fe City Council, neighborhood associations, non-profits, farmers, and community members
- ✎ **Work with the City and County to develop zoning and land use policies which clearly detail home-based agricultural activities such as raising chickens, small livestock, and honey bees.**
Potential Partners: City of Santa Fe Land Use and Zoning Department, Santa Fe City Council, Santa Fe County Growth Management and Land Use Department, neighborhood associations, non-profits, farmers, and community members
- ✎ **Encourage public and private land owners within the City to revitalize vacant and underutilized property by allowing land to be used for green space and gardening.**
Potential Partners: City of Santa Fe Land Use and Zoning Department, Santa Fe City Council, and community members

Goal 6: Develop agricultural incentives and innovative programs to support small farmers and maximize food production/distribution in our regional foodshed.

- **Promote and expand outreach and incentives for extended season farming techniques, supporting farmers to generate more income.**

Potential Partners: New Mexico State Extension Service, Natural Resource Conservation Service, Santa Fe Farmers Market Institute

- **Assess and develop resource tools such as conservation easements, improvement districts, and grants to support the viability of agricultural uses. (Santa Fe County Sustainable Growth Management Plan, 2010, strategy 14.2.2, page85.)**

Potential Partners: Santa Fe County Planning Division, Santa Fe Growth Management Department, Santa Fe Board of County Commissioners, New Mexico Land Conservancy

- **Coordinate with local communities and organizations to promote the development of agricultural products and markets, including the development of farmers markets, buy-local campaigns, and a local products website to market and distribute fresh goods. (Santa Fe County Sustainable Growth Management Plan, 2010, strategy 14.2.3, page85.)**

Potential Partners: Santa Fe County Growth Management Department, Santa Fe Food Policy Council, Santa Fe Farmers Market Institute, New Mexico Farmers Marketing Association, NMDA-Taste the Tradition and Grow with Tradition

- **Establish Specialty Crop programs which support local farm and food based businesses by creating subsidies for fruits and vegetables.**

Potential Partners: City of Santa Fe Economic Development, Santa Fe County Economic Development, New Mexico Department of Agriculture

- **Clarify and communicate the process by which landowners can apply for Agricultural Exemptions; Conduct a “Did You Know” campaign to make the public aware of qualifications for this classification, and to facilitate the application process.**

Potential Partners: Santa Fe County Growth Management, Office of the Santa Fe County Assessor, Santa Fe Food Policy Council--Land Use Subcommittee

- **Maximize the efficient use of existing infrastructure in our regional foodshed. For example, the Rail Runner is a public transit spine which could be used to transport growers and their produce, expanding markets and food access points from Belen to Santa Fe**

Potential Partners: Santa Fe County Growth Management, Rio Metro Board, Mid Region Council of Governments (MRCOG), University of New Mexico



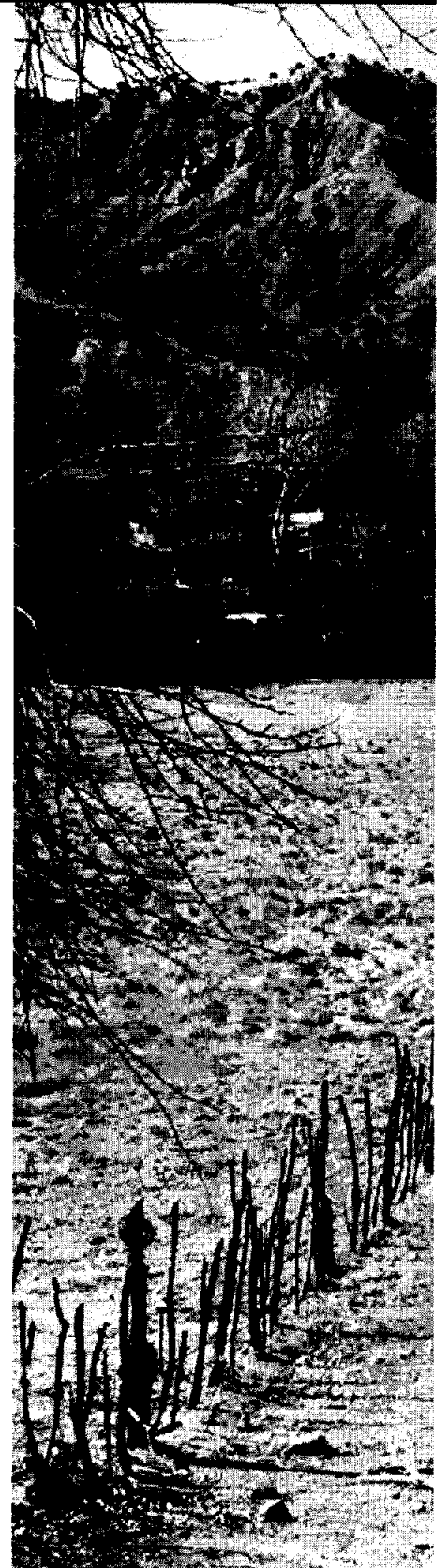


Goal 7: Adopt sustainable land/resource management practices at a regional scale.

- ✎ **Encourage City planning initiatives such as urban forestry, green belts, and edible infrastructure to create continuous green space which can provide habitat for animals, food, shade, and places to play.**
Potential Partners: City of Santa Fe Parks Division, City of Santa Fe Roadway and Trails Department, Southwest Area Planning Initiative
- ✎ **Develop a list-serv for urban food harvesting opportunities to connect individuals to existing food production sites, allowing them to collect crops that would otherwise go to waste.**
Potential Partners: City of Santa Fe, Santa Fe County Growth Management Department, Cula Gardens, non-profits, community members
- ✎ **Support the development of community elected “GMO Free Zones” to create buffer zones that protect farmland, crops, and seeds from the unknown impacts of genetically engineered organisms.**
Potential Partners: Santa Fe County Growth Management, New Mexico State Extension Service, area Tribal Governments, non-profits
- ✎ **Promote educational opportunities in community gardens and public spaces that highlight native, low water plants and traditional uses.**
Potential Partners: Homegrown New Mexico, Tesuque Agriculture Department, City of Santa Fe Parks Division, Santa Fe County Open Space and Trails Division, Southwest Area Planning Initiative
- ✎ **Develop incentives, policies and programs throughout the City and County designed to support farming and ranching activities and improve environmental resiliency: develop a composting program, build soil to increase land fertility and groundwater recharge, improve functionality of waterways and irrigation networks, and promote growth of plants that are resilient in a wider range of climate conditions and provide habitat for beneficial insects.**
Potential Partners: City of Santa Fe Parks Division, Santa Fe County Growth Management, New Mexico State Extension Service, area Tribal Governments, USDA, Santa Fe Watershed Association, Quivira Coalition, other non-profits
- ✎ **Collaborate with area agencies and organizations to develop “Farmer to Farmer” outreach programs focused on innovative farming and ranching practices that build soil health.**
Potential partners: Santa Fe Farmers Market Institute, Quivira Coalition, Natural Resource Conservation Service, New Mexico State Extension Service, Farm to Table, other non-profits

Goal 8: Prioritize sustainability and agriculture in future development in Santa Fe City and County.

- 👉 **Develop an Implementation Plan for the Agriculture and Ranching Element, Chapter 4 of the 2010 Sustainable Growth Management Plan.**
Potential Partners: Santa Fe Food Policy Council, Santa Fe County Growth Management, Santa Fe County Board of County Commissioners, Santa Fe Food Policy Council
- 👉 **Establish City and County development approval requirements to incorporate water-efficient edible landscapes, food production and composting areas for the future residents into their master plans.**
Potential Partners: City of Santa Fe Department of Housing and Community Development, Santa Fe County Building and Development Services, Santa Fe County Growth Management and Land Use, area developers
- 👉 **Establish City and County development approval requirements with standards and regulations that do not limit home-based agricultural activities otherwise allowed by land use approval authority.**
Potential Partners: City of Santa Fe Department of Housing and Community Development, Santa Fe County Growth Management and Land Use, Homegrown NM, area developers
- 👉 **Revise the City of Santa Fe's Development Code landscape requirements to allow and/or require a percentage of plants produce fruits or vegetables that have low to moderate water requirements.**
Potential partners: City of Santa Fe Parks Division, Sangre de Cristo Water Division, Santa Fe Watershed Association
- 👉 **Assess and develop a county-wide composting program that considers food waste, green waste, and manure. (Santa Fe County Sustainable Growth Management Plan, 2010, strategy 15.3.3, page 86.)**
Potential Partners: City of Santa Fe Environmental Services Division, Santa Fe County Growth Management, New Mexico State Extension Service, area Tribal Governments, USDA, Santa Fe Watershed Association, Quivira Coalition, other non-profits
- 👉 **Complete an Agricultural Overlay Zone to protect agricultural land and resources and create bonus and incentive zoning techniques.**
Potential Partners: Santa Fe County Growth Management Department, Santa Fe Food Policy Council—Land Use subcommittee





- Provide regulatory framework to accommodate sustainable historic development patterns and strengthen community planning efforts to ensure that traditional communities are supported in planning for their futures.

Potential Partners: Santa Fe County Growth Management

- Develop an agriculture preservation policy that is directed toward maintaining small agricultural parcels, including “working land” (such as barns, greenhouses, and other structures) as part of the developable land. (Santa Fe County Sustainable Growth Management Plan, 2010, strategy 14.1.3, page 85.)

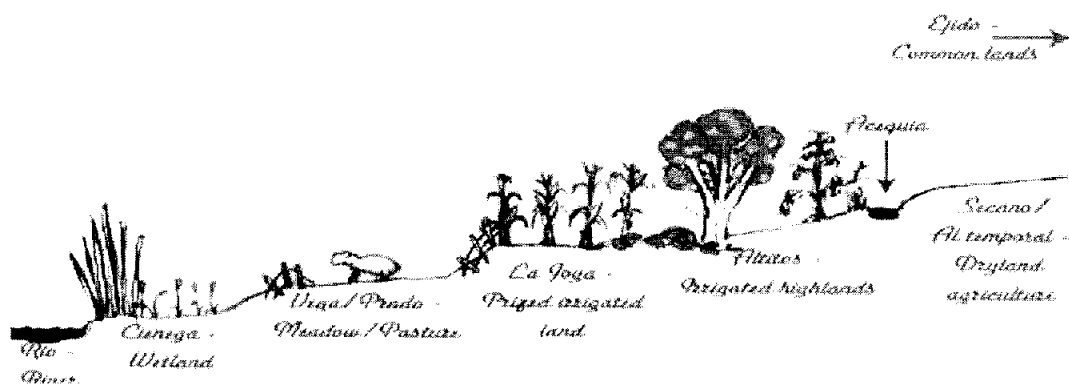
Potential Partners: Santa Fe County Planning Division, Santa Fe County Growth Management Department, Santa Fe Food Policy Council–Land Use Subcommittee, Santa Fe Board of County Commissioners, non-profits

- Create an inventory of agricultural lands and conduct a land suitability analysis to identify agricultural potential and determine high priority of protection for agricultural soils and other sensitive arable lands, especially historical agricultural lands with water rights. (Santa Fe County Sustainable Growth Management Plan, 2010, strategy 14.1.5, page 85.)

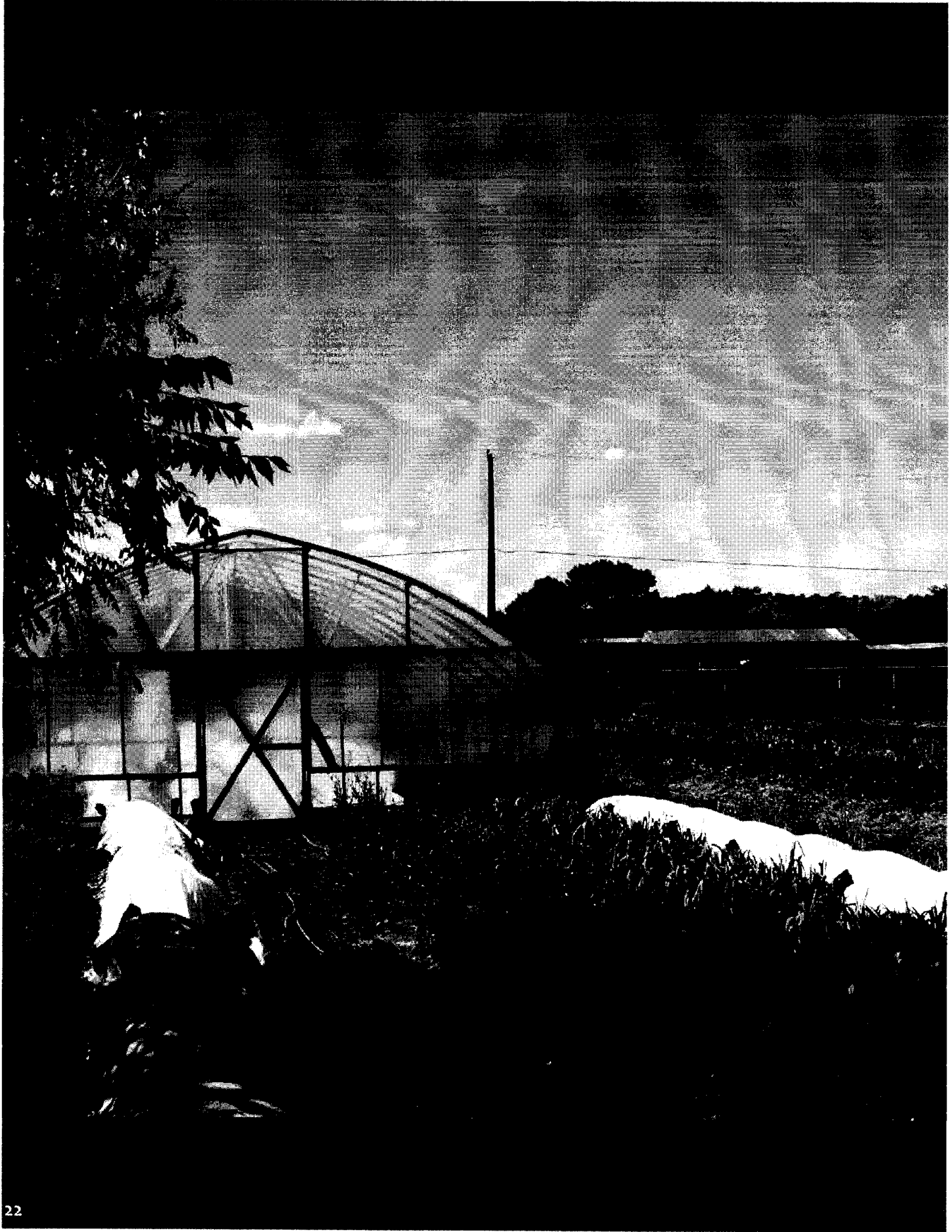
Potential Partners: Santa Fe County Growth Management Department, Santa Fe Food Policy Council–Land Use Subcommittee, Santa Fe Board of County Commissioners, New Mexico Acequia Association, non-profits

- Require clustering of new development on acequia-irrigated agricultural land. (Santa Fe County Sustainable Growth Management Plan, 2010, strategy 16.3.5, page 87.)

Potential Partners: Santa Fe County Growth Management Department, Santa Fe Food Policy Council, Santa Fe Board of County Commissioners, non-profits



Acequia landscape cross-section. Traditional communities are characterized by historic acequia irrigated farmlands which are important to the culture, heritage, community and natural environment. When developing in and around acequia landscapes, it is essential to understand, prioritize, and maintain the natural and agricultural systems’ integrity. (Santa Fe County Sustainable Growth Management Plan, 2010, page 76.)



Thank You & Acknowledgments

The Santa Fe Food Policy Council would like to thank the Santa Fe City Council and Board of County Commissioners. Above all, we would like to thank the community of Santa Fe for inspiring the vision for our local food system highlighted in this plan. Ours is a vision rooted in respect for the diverse history and deep connection to the land. It is one which celebrates our passion for local foods, honors our farming community, and embraces innovation as a path to ensuring food security for future generations.

SANTA FE CITY AND COUNTY ADVISORY COUNCIL ON FOOD POLICY CURRENT MEMBERSHIP

Susan J. Perry, Chair, Wellness Coordinator, City of Santa Fe
Tony McCarty, Vice- Chair, Executive Director, Kitchen Angels
Pamela Roy, Executive Director, Farm to Table
Katherine Mortimer, Sustainability Director, City of Santa Fe
Lynn Walters, Executive Director, Cooking with Kids
Mark Winne, Food Systems Author, Johns Hopkins University
Steve Warshawer, Founder, Beneficial Farms
Emigdio Ballon, Director of Agriculture, Tesuque Pueblo Farm
David Sundberg, Executive Chef, Blue Corn Brewery
Cydney Martin, Santa Fe County Extension Home Economist
Patricia Boles, Health and Human Services, Santa Fe County
Susan Odiseos, President, Food for Santa Fe/Feeding Santa Fe
Erin Lloyd Ortigoza, Staff, Santa Fe Food Policy Council Coordinator

With much appreciation to our funders and fiscal sponsor:
City of Santa Fe, Santa Fe County, Santa Fe Community Foundation,
McCune Charitable Foundation, Farm to Table (fiscal sponsor).

CONTRIBUTING STAKEHOLDERS 2013-2014

Santa Fe County Community Services Department, Santa Fe County Emergency Management, Santa Fe County Growth Management Department, Santa Fe County Open Space and Trails, City of Santa Fe Economic Development, City of Santa Fe Emergency Management, City Councilor Carmichael Dominguez, City of Santa Fe Environmental Services: Sustainable Santa Fe, City of Santa Fe Parks Division: Chamber of Parks Advisory Commission, City of Santa Fe Wellness Department, Farm to Table New Mexico, Cooking with Kids, Kitchen Angels, Adelante, The Food Depot, Food for Santa Fe, Bienvenidos Outreach, The Community Farm, The Street Food Institute, Santa Fe Farmers Market Institute, Santa Fe Southside Farmers Market, La Montanita Co-op and Cooperative Distribution Center, Santa Fe Community Co-op, Homegrown NM, GAIA Gardens, Santa Fe Watershed Alliance, La Familia Medical Center, Adelante, Santa Fe Public Schools, Institute for American Indian Arts, Santa Fe Community College, Area Agency on Aging, Eight Northern Pueblos Food Distribution Program on Indian Reservations (ENIPC), New Mexico Income Services Division, New Mexico Department of Health, Pueblo of Pojoaque, Pojoaque Farmers Market, Pueblo of Tesuque, Ohkay Owingeh Pueblo, the New Mexico Food and Seed Sovereignty Alliance, New Mexico Acequia Association, Edgewood Senior Center, Southside Quality of Life Initiative, New Mexico State Extension Service

At a Glance Recommendations

GETTING FOOD

Our vision for connecting communities in the Santa Fe region to a reliable supply of healthy and affordable foods is rooted in building knowledge of available assistance programs and resources, as well as ensuring that these foods are readily available in local stores, farmers markets, senior centers, hospitals, and schools.

Goal 1: Improve residents' ability to access fresh, nutritious food.

Goal 2: Promote self-reliance, family gardening, and food storage.

Goal 3: Prioritize getting local, fresh food into schools.

Goal 4: Promote existing food assistance programs.

Goal 5: Celebrate local food and support regional food economy.

LEARNING ABOUT FOOD

Our vision for food education is to equip residents with the knowledge, skills, passion and environment to make healthy choices for themselves, their families, and the community.

Goal 1: Expand opportunities for creative and experiential learning through cooking and nutrition.

Goal 2: Promote the development of healthy and safe built environments.

Goal 3: Expand and diversify opportunities to access food assistance.

Goal 4: Align and publicize wellness policies throughout the Santa Fe region.





GROWING FOOD

Our vision for food production in Santa Fe City and County views farming and ranching as an economically viable way of life that promotes stewardship of the land and resources. This vision supports food security through the integration of sustainable agricultural practices into the built environment.

Goal 1: *Increase the impact and efficiency of community gardens.*

Goal 2: *Develop on-site gardens at senior centers to increase the availability of fresh and local foods for seniors.*

Goal 3: *Increase the number of school gardens aimed at helping youth learn about food, farming, and healthy lifestyles.*

Goal 4: *Conserve water through educational programs, incentives, and policies.*

Goal 5: *Increase the viability and presence of local gardens, farms and ranches.*

Goal 6: *Develop agricultural incentives and innovative programs to support small farmers and maximize food production/distribution in our regional foodshed.*

Goal 7: *Adopt sustainable land/resource management practices at a regional scale.*

Goal 8: *Prioritize sustainability and agriculture in future development in Santa Fe City and County.*

Feeding America, Map the Meal Gap. 2011. www.feedingamerica.org

United States Department of Agriculture, Census of Agriculture. 2007. <http://www.agcensus.usda.gov>

O'Donnell Economics and Strategy. Santa Fe County 2013: A Community Health Profile. May 31, 2013. <http://www.santafecountynm.gov>

Mark Winne, Michael Burgan. Doing Food Policy Councils Right: A Guide to Development and Action. September 2012. www.markwinne.com

New Mexico Food and Agriculture Policy Council. Growing a Healthy Food System- Food and Agriculture in New Mexico. January 2005. www.farmtotablenm.org

The Santa Fe County Sustainable Growth Management Plan (SGMP), Santa Fe County General Plan, adopted by resolutions 2010-210 and 2010-225

A Community Health Profile: Santa Fe County 2013

The Santa Fe County Health Action Plan: FY 2012-2017

Photo Credits: Cooking with Kids, Evelyn Waters, Jennifer Dahlbom, Farm to Table, Food for Santa Fe, Santa Fe County Planning Division

This document is printed on 100% recycled paper

To download this document and get more information go to:

www.SantaFeFoodPolicy.org



G.2



new energy economy

Addressing the Climate Challenge
with Bold Solutions

An Evaluation of Specific Aspects of PNM's Rate Case

Background

PNM has filed a new Application to raise their rates an additional \$123.5 million at the New Mexico Public Regulation Commission (NMPRC). This is a residential rate increase of 15.8%, over and above the 50% increase of rates from 2008-2014, while New Mexico real median household incomes have declined by 6.4% since 2008. PNM ongoing earnings have increased by 461% during that same period.¹ As part of the newest increase request, PNM is asking for a 163% increase in the flat fee for residential ratepayers, hurting those who can least afford it.

PNM seeks to acquire nuclear

In addition, PNM has purchased 64 MWs of nuclear power from Palo Verde Nuclear Generating Station, and tie ratepayers to this resource until at least 2046. This purchase will cost ratepayers at minimum \$40 million per year. PNM has not presented the PRC with *any* financial or risk evaluations before it purchased the nuclear power. Rather than evaluating this purchase of nuclear power against other feasible alternatives of wind and solar power, PNM is skirting these pesky ratepayer protections because PNM knows that their preferred legacy nuclear investments can't compete against cheaper solar and wind!

Cost of electricity and economic environment

		2008	2014	% change
PNM				
Residential electricity cost	\$/kWh	0.0828	0.1297	56.6%
Overall Retail electricity cost	\$/kWh	0.0726	0.1081	48.9%
PNM Ongoing Earnings	\$k	15,684	88,000	461.1%
Real Median Household Income in NM	\$	47,841	44,803	-6.4%

Residential rates have further increased in 2015: YTD 2015 actuals through October were \$0.1361/kWh for a total increase from the base period in 2007-8 of 64%. Residential and overall retail electricity cost for 2008 is the actual for the 12 months prior to the rate increase implemented in April 2008 in case 07-00077-UT. Electricity costs includes all costs - base rates, fuel costs, all riders, etc. Electricity costs are reported in EIA-826 database. A summary of the data for the time periods indicated is provided in Exhibit DVW-2.

Median income for New Mexicans: www.deptofnumbers.com/income/new-mexico/

2008 Ongoing earnings

<http://www.pnmresources.com/~media/Files/P/PNM-Resources/quarterly-results/2008/2-6-09-updates-to-schedules-1-4.pdf>

2014 Ongoing earnings

¹ <http://www.pnmresources.com/~media/Files/P/PNM-Resources/quarterly-results/2014/q4-2014-earnings-release-and-reconciliations.pdf>

The only way the public has a chance of being protected against PNM's unending quest to increase their shareholders' profits at the expense of ratepayers is if the PRC requires PNM to analyze their resource choices against other alternatives in a transparent manner. PRC rules dictate that when new resources are added that the utility take into consideration the "risk and uncertainty (including but not limited to financial competitive, reliability, operational, fuel supply, price volatility and anticipated environmental regulation)" associated with all such options "through its projected life with a life-cycle or similar analysis". PNM did not conduct any analysis whatsoever.

PNM signs a \$580M coal contract at Four Corners

We've been focused on PNM's San Juan coal plant, but PNM also has an interest in nearby Four Corners Power plant, located on Navajo Nation. In December 2013 PNM signed a \$580 million coal contract but only told the PRC about it in December 2015 (after NEE asked PNM in discovery if they had ever communicated the purchase to the PRC). PNM has not explained, supported, nor justified the addition of the \$580M ratepayer obligation contained in the Four Corners Power Plant coal contract. The coal contract is a take-or-pay coal contract meaning if PNM takes the coal we have to pay and if PNM doesn't take the coal we have to pay. So much for skillful negotiating on our behalf. Again, it is not prudent or reasonable to be re-investing in coal for such a long time and it is irresponsible in the extreme to have not conducted financial analyses *before* signing the take-or-pay coal contract. Note: El Paso chose to leave the Four Corner Power plant because of rising costs for pollution controls and the exorbitant take-or-pay coal contract.

Both coal and nuclear are unnecessary and it is the job of the PRC to protect ratepayers from excessive purchases at exorbitant prices especially when they present enormous risks to the health, environment, and economy of New Mexicans.

(K)



COMPOST! SANTA FE is a city wide campaign to get SantaFeans composting and create awareness around how soil pulls carbon from the air and stores it in the ground!

JOIN US FOR WORKSHOPS, PRIZES, AND A CHANCE TO GET YOUR HIGH QUALITY DISCOUNTED COMPOSTING BIN
YOU can help reverse the effects of climate change IN YOUR OWN BACKYARD!

FREE Hands On Composting Workshops

EARTH DAY, FRIDAY APRIL 22ND, 2:00PM
SALAZAR, AMY BIEHL, AND EL CAMINO RAE
GARDEN FAIR, SATURDAY MAY 7TH 9AM-3PM
SF COUNTY FAIR GROUNDS
FRIDAY MAY 13TH WHOLE FOODS
THURSDAY MAY 26TH WHOLE FOODS

REUSE-APALOOZA, SATURDAY JUNE 4TH THE RAILYARD
SATURDAY JUNE 4TH 9-11AM
SF COUNTY FAIR GROUNDS
SATURDAY JULY 7TH 9-11AM
SF COUNTY FAIR GROUNDS

COMPOST! SANTA FE, FINAL EVENT AUGUST 27TH
(PICK UP YOUR PRE-ORDERED BIN) SF COUNTY FAIR GROUNDS

Teach your family environmental stewardship at every meal
Grow more and better food in your garden
Restore Santa Fe's soil
Reduce Climate Change
Minimise food waste



\$60

Sponsored By:



For More Information:

www.earthcarenm.org
Info@earthcarenm.org
(505) 983-6896

WHY COMPOST?

IF 500 COMPOST BINS ARE
OPERATING IN SANTA FE
BACKYARDS, THAT WILL REDUCE
CARBON EMISSIONS BY A NET 850
METRIC TONS OF CO₂ EMISSIONS
PER YEAR, FOR EVERY YEAR THEY
COMPOST

Effective and simple to use,
this \$120 value compost bin is a
great way of turning most kitchen
and garden waste into a rich and
powerful soil conditioner.

Strong, durable construction.
Windproof lid. Wide top opening
and convenient side harvest hatch
Made of 100% recycled materials

Two Ways to Pre-Order Your Bin

1) Online * EARTHCARENM.ORG

2) Return this form with your check or money order to: **Earth Care**
6600 Valentine Way Bldg. A
Santa Fe, NM 87507

Name _____ Phone() _____

Address _____ City _____ State _____

Zipcode _____ Email _____

Purchase a personal composting
bin at 50% discount

Purchase a bin at full price
and donate one to a lower income family

Call Earth Care:
(505)983-6896

\$60



EXHIBIT D