



# Agenda

CITY CLERK'S OFFICE

DATE 2/10/16 TIME 10:47

SERVED BY JOE

RECEIVED BY ANNE

## SUSTAINABLE SANTA FE COMMISSION

Wednesday, February 17, 2016, 4:00 p.m.

Councilors' Conference Room, City Hall (200 Lincoln Avenue)

- A. CALL TO ORDER
- B. ROLL CALL
- C. APPROVAL OF AGENDA
- D. APPROVAL OF MINUTES: January 13, 2016 and January 27, 2016
- E. COMMUNICATIONS FROM THE FLOOR
- F. REPORT FROM, AND ASSIGNMENT OF, ACTIONEER
- G. DISCUSSION/ACTION ITEMS
  - 1. A RESOLUTION DIRECTING THE CITY MANAGER TO DEVELOP A STORMWATER MANAGEMENT PROGRAM THAT UPDATES THE CITY'S STORMWATER MANAGEMENT POLICIES IN FURTHERENCE OF THE CITY'S ENVIRONMENTAL AND SUSTAINABILITY POLICIES AND GOALS. (Councilor Ives, Mayor Gonzales, and Councilor Maestas) (Melissa McDonald)
  - 2. Presentation: Water Resources (Andrew Erdmann, City of Santa Fe Water Division)
  - 3. Discussion: Property Assessed Clean Energy (PACE) (Jack McGowan)
  - 4. 25-year Sustainability Plan: committee updates
- H. ITEMS FROM THE CHAIR & CO-CHAIR
- I. ITEMS FROM THE COMMISSION
- J. ITEMS FROM STAFF
- K. ITEMS FROM THE PUBLIC
- L. ITEMS FOR NEXT AGENDA
- M. ADJOURNMENT

**Next Meeting: March 16, 2016**

**NOTE: Persons with disabilities in need of accommodations, contact the City Clerk's office at 955-6520, five (5) working days prior to meeting date.**

**SUSTAINABLE SANTA FE COMMISSION  
INDEX  
February 17, 2016**

Cover Page		Page 0
Call to Order and Roll Call	The Sustainable Santa Fe Commission meeting was called to order by Ms. Beth Beloff, Chair. A quorum was declared at time of roll call.	Page 1
Approval of Agenda	No changes.  <i>Commissioner Holian moved to approve the agenda as presented, second by Mr. McGowan, motion carried by unanimous voice vote.</i>	Page 1
Approval of Minutes January 13, 2016 and January 27, 2016	January 13, 2016 – Corrections: Page 2: <del>SFCC</del> Acronym incorrect for SSFC (Sustainable Santa Fe Commission)  <i>Commissioner Holian moved to approve the minutes of January 13, 2016 as amended, second by Mr. Ciano, motion carried by unanimous voice vote.</i>  January 27, 2016  <i>Commissioner Holian moved to approve the minutes of January 27, 2016 as presented, second by Mr. McGowan, motion carried by unanimous voice vote.</i>	Page 2
Communications from the Floor	Introductions	Page 2
Report from and assignment of Actioneer	Informational	Page 2
<b>Discussion and Action Items:</b> A Resolution directing the City Manager to develop a Stormwater Management Program that updates the City's Stormwater Management Policies in furtherance of the City's Environmental and Sustainability policies and goals.  Presentation: Water Resources (Andrew Erdman, City of Santa Fe Water Division)  Discussion: Property Assessed Clean Energy (PACE) (Jack McGowan)	<i>Commissioner Holian moved that we recommend approval of the resolution directing the City Manager to develop a Stormwater Management Program that updates the City's Stormwater Management Policies in furtherance of the City's Environmental and Sustainability policies and goals , second by Mr. Hirsch, motion carried by unanimous voice vote.</i>  <i>Informational</i>	Page 2-8

Discussion on Energy Working Group. Reprint – Summary of what is available from PACE and we will look to Commissioner Holian for her input. (Exhibit C)		
25-year Sustainability Plan: Committee Updates		
<b>Items from the Chair and Co-Chair</b>	<i>Informational</i>	Page 8
<b>Items from the Commissioners</b>	<i>Informational</i>	Page 9
<b>Items from Staff</b>	<i>None</i>	Page 9
<b>Next Meeting</b>	<i>March 16, 2016</i>	Page 9
Adjournment	There being no further business to come before the Santa Fe Sustainable Commission, the meeting was adjourned at 6:00 pm	Page 6
Signature Page		Page 9

**SUSTAINABLE SANTA FE COMMISSION**  
**Wednesday, February 17, 2016, 4:00 to 6:00 p.m.**  
**City Councilors' Conference Room, City Hall, 200 Lincoln Avenue**

**MINUTES**

**A. CALL TO ORDER**

The Sustainable Santa Fe Commission meeting was called to order by Ms. Beth Beloff, Chair at 4:05 pm. A quorum was present at time of roll call.

**B. ROLL CALL**

**Present:**

Beth R. Beloff, Chair  
Tejinder Ciano  
Jack McGowan  
Robb Young Hirsch  
Christian Casillas  
Amanda Hatherly  
Kathleen S. Holian  
Linda Smith

**Not Present/Excused:**

Michael Loftin  
Glenn Schiffbauer

**Others Present:**

The Chair invited those in attendance and the Commission members to introduce themselves.

**Public:**

Mary Schruben, City of Santa Fe  
Seth Roffman, Green Times  
Joe Eichner, Audience  
Andrew Erdman, Water Division  
Andy Otto, Santa Fe Water Shed

**Staff Present:**

John Alejandro, Staff Liaison  
Melissa McDonald, River and Watershed Coordinator  
Adam Schlachter – Santa Fe Solid Waste

Fran Lucero, Stenographer

**C. APPROVAL OF AGENDA**

No changes.

*Commissioner Holian moved to approve the agenda as presented, second by Mr. McGowan, motion carried by unanimous voice vote.*

**D. APPROVAL OF MINUTES: January 13, 2016 and January 27, 2016**

January 13, 2016 – Corrections:

Page 2: ~~SFCC~~ Acronym incorrect for SSFC (Sustainable Santa Fe Commission)

*Commissioner Holian moved to approve the minutes of January 13, 2016 as amended, second by Mr. Ciano, motion carried by unanimous voice vote.*

January 27, 2016

*Commissioner Holian moved to approve the minutes of January 27, 2016 as presented, second by Mr. McGowan, motion carried by unanimous voice vote.*

**E. COMMUNICATIONS FROM THE FLOOR**

None

**F. REPORT FROM, AND ASSIGNMENT OF, ACTIONEER**

**ACTIONEER LIST:**

- Mr. Alejandro was to look at the availability of data and consider a custom map that merges the MPO map, Santa Fe trends map and the newer county map. Mr. Alejandro is working with GIS, demographics are the same. Map will be produced demographics are from the MPO report.
- Mr. Alejandro to find out if we need to get a city Resolution for the \$50,000 to be allocated to the specific RFP. Start conversation with County for a match. Ask Attorney about co-mingling of city and potential county funds. Mr. Alejandro said that the resolution has been drafted and is going through the city process.
- All to provide Mr. Alejandro with feedback on the scope of work something like “assist with development of the final document.” Mr. Alejandro did receive.
- Mr. Alejandro to check date for budget timeline.

**G. DISCUSSION/ACTION ITEMS**

1. A Resolution directing the City Manager to develop a Stormwater Management Program that updates the City’s Stormwater Management Policies in furtherance of the City’s Environmental and Sustainability policies and goals.

Draft: Ms. McDonald. The red lined section indicates the major changes, noted on Page 2. This resolution is sponsored by Mayor Gonzales and Councilor Ives. There are regulatory changes are being revamped as well as the TMDLs.

The Chair noted that there is limited fiscal impact. Recommendation was in order to carry out with consultants, the Water Fund was identified. Ms. McDonald said she thinks there may be CIP funds available as well. The

recommendations that come out will have fiscal impact. It was stated that this is a way to list our goals and to talk about how it will impact us. This will also offer an opportunity to review the savings as there will be savings.

Red lined areas on the resolution are the changes that the River Commission recommended. Ms. McDonald will run the draft through Councilor Ives to see if he accepts the friendly amendments, the Sustainable Santa Fe Commission members were asked to send their comments by e-mail to Melissa McDonald. Mr. Otto from the Santa Fe Watershed Association was provided with the red-line draft as provided to the members. After this committee it goes to Public Works, Finance, PUC and final to City Council.

***Commissioner Holian moved that we recommend approval of the resolution directing the City Manager to develop a Stormwater Management Program that updates the City's Stormwater Management Policies in furtherance of the City's Environmental and Sustainability policies and goals , second by Mr. Hirsch, motion carried by unanimous voice vote.***

2. Presentation: Water Resources (Andrew Erdman, City of Santa Fe Water Division)

Exhibit B-1 & 2 (Santa Fe Water Resources: Managing for Long Term Resiliency and Map) Mr. Erdman provided a verbal recap of the documents attached to these minutes. Santa Fe has a Diverse Water Portfolio consisting of 4 direct sources, 2 ground, 2 surface and 2 indirect sources. Groundwater table in Exhibit B-1 identifies those sources. Annual demand has dropped from ~12,600 afy in 2001 to ~8200 afy in 2015; the service population has increased 30% in that time. Groundwater use has diminished from 93% in 2002 (drought year) to 15% in 2015 (wet year). Water Conservation measures have reduced per capita demand from 168 gallons per capita per day in 1995 to 95 GPCD in 2014, among the lowest in the west. Reclaimed water is being used to irrigate the newly opened SWAN Park and is being researched as an additional source of supply to meet future demand. Intake structures at Nichols and McClure have been rebuilt and are presently refilling water with future drinking water.

We have a very stellar conservation program.

Two different aquifers, water beneath town, those ground water levels are fairly stable and there is gradual decline. There is some use that doesn't belong to the city. Buckman permit is for 10,000 feet of water, we pumped 628 which we recovered. We are trying to stay on surface water. With the feasibility study we want to keep at a high level – costly due to energy consumption.

Mary Schruben: Do you have a number for the amount of people who have existing home wells in the city of Santa Fe and/or a guestimate for their use if they wanted to go from their grandfathered wells to city water? Do you factor that in for household use?

Mr. Erdman said that there are a lot of numbers: 900 households with wells, OSE said closer to 270 wells. The wells in the city are very old; the number of

900 might be very old and non-functional wells. ½ acre foot of water is enough for residential use. Water Department is working on the aquifer.

Agua Fria village does have to report to the OSE on water usage. They have an interesting well as they are right along the river.

Mr. Hirsh expressed his thanks for this presentation and asked Mr. Erdman for his recommendation on what we need to work on. Mr. Erdman said that the city has done a great job of getting this water number very low. We could do better at educating the public on water conservation.

Ms. Hatherly commented that WERS – started in Santa Fe and is now being recognized nationally. With the new green code houses may need a WERS rating.

Commissioner Holian is a member of the Water Alliance for the Western United States. They discuss how communities can be better at managing water resources. Santa Fe is recognized as one of the most progressive in water conservation.

Christian Casillas: Water Hardening – to squeeze efficiency. We should have incentives and water rebates for water conservation and rain barrel use. There is a lot of discussion around reductions and savings. Sometimes giving someone a rain barrel doesn't make it work if they are not using for watering, etc. Water Conservation also includes the use of rainwater and grey water. WERS will be part of the Green Code for residential construction.

Adam Schlachter: Rain barrels are good for composting and under review; unfortunately the pricing is not competitive. Base cost came in at \$55 per unit.

3. Discussion: Property Assessed Clean Energy (PACE) (Jack McGowan)  
Discussion on Energy Working Group. Reprint – Summary of what is available from PACE and we will look to Commissioner Holian for her input. (Exhibit C)

Mr. McGowan's report provided a program overview, summary and authorities for committee members review.

In NM only renewable energy projects can be funded with PACE. We asked Harold Trujillo, City of Santa Fe staff if he would run a request for an opinion to find out if energy efficiency could be included. He will request an opinion on non-traditional lease purchase agreements. Geothermal heat pumps could be viewed as renewable. PACE is a valuable approach; you can implement a project without capital dollars through regional sources. Residential PACE was put on hold because Fannie May and Freddie Mac would not finance a home that had PACE. Under Summary there are residential PACE that are being done. If you don't have a mortgage you can use PACE – the real opportunity is commercial PACE. Commercial PACE has been successful all over the country. It is appealing to the commercial world because you get low interest loans, you can finance 50% of the value of the building, you don't add any debt to the building. If you sell the building you sell the debt.

The repayment is through the property taxes so it doesn't show in the mortgage.

Mr. McGowan - Santa Fe County has all the steps in place to provide PACE - mechanisms are in place, financial process in which you would identify bond funding that would generate the cash pool for constituents to borrow from.

Commissioner Holian noted that Santa Fe County does not have a process in place, but it wouldn't be hard to revive it. The best next step is for Commissioner Holian to bring a resolution to the Santa Fe County Commission for the PACE commercial funding. Mr. McGowan will ask Mr. Harold Trujillo to see if wording for the resolution exists or if he can help with the wording. Mr. Alejandro located the last Santa Fe County Resolution and will share with Commissioner Holian.

Mr. Hirsh said we should do an outreach to other county communities and the NM Municipal League.

#### 4. 25-year Sustainability Plan: Committee Updates

Jack McGowan/Linda Smith:

Energy Group met today and came up with some immediate plans to make strong recommendations with arguments to get through the current barriers making three top recommendations coming from the earlier CAT actions and submit those arguments before the budget process begins.

- a. PACE (Report Above)
- b. Executive Order to mandate energy target savings in departments.
- c. Performance contracting stalled out or scope potentially reduced. We would like to bring that back and move forward. All of these three things are budget neutral. Mr. McGowan stated that based on earlier discussions there was a concern that funding was available through the state and may not be utilized as effectively as could be because the city might not move forward and that concern that we would need to pay it back.

Mr. Alejandro said we are going forward with the performance contract and he has three ENERSCOs (?) that will be meeting with Waste and Water, Southside library and Chavez Center in the next 2 weeks. Mr. McGowan said their recommendation is that we would still do the audit for all buildings and use the state funding. Mr. Alejandro stated that when they started this project they assessed all city facilities and narrowed it down to those three as they are facilities that we will hold on to for at least 20 years. ENERSCO is the contractor who is looking at the building portfolio and working with Public Works.

Climate: Mr. Casillas - John uncovered some information today on PNM's commercial and residential/industrial electricity use in 2009. It is a bit outdated but still helpful. In the next 3 weeks we will work on a document that will have the first rough cut of emissions from Santa Fe. The Chair



asked if it still important to get current data from Santa Fe. Mr. Casillas concurred, yes it is important. Ms. Beloff will provide assistance in acquiring this information if the confidentiality commitment is met. Mr. Alejandro said that it would need to go to the City Attorney and the Governing Body would need to approve.

Mr. Hirsch will be meeting tomorrow, report to follow at next meeting.

Commissioner Holian: Food Security Committee – Food Plan – Recommendations on getting food, growing food and learning food. A lot of the recommendations can be very relevant to the recommendations that this commission would like to make. It also identifies partners, who would work together to make those recommendations work. The Food Policy Council will have a retreat in the near future. They are going to specify their updated goals for this year and 2017 and will be part of the Food Security Plan. We should invite Morgan to present that. John Alejandro is the staff person for the Food Policy Council.

Commissioner Holian spoke about a Water Planning process that is going on right now and relevant to what Sustainable Santa Fe Commission wants to do on water issues. Discussion – State of NM is divided in to 16 different regions and there are regional water plans that were done 10-12 years ago in each of the regions and all are now being update. We are in the Jemez-Sangre region which includes Santa Fe County north of the Galisteo watershed all the way up to Espanola, essentially. This particular region includes three watersheds, Galisteo, Santa Fe and the Pojoaque watershed. The good thing about this is that what we are putting together is mandated by the state so we have to do this and it is very regional in nature. I think that is the way we have to think about water planning in the future. The goal of these water plans is to close the supply water gap in the future. We are all sharing these watersheds so we should not just do water planning in the city or the county, we need to work together. In principle they should be updated every 5 years. The Interstate Stream Commission gave us an initial draft of the water plans – there are two sections that haven't been drafted, Section 2 - public involvement and Section 8 which is a list of projects and policies that we want in the region. State funding is going to depend on the projects in this water plan. Every governmental entity should focus on getting what they need in to this water plan. This plan has to be done by the end of this year, draft due no later than June and it will be a public process. The state will take all the regional water plans and put together for a State Plan in order to coincide with the water compacts in Colorado and Texas. We need to do our plan to express that we need the water for our state.

Steering Committee: (Handout attached) – Brings a lot of people together from different communities, non-profits, business community and the Pueblos. Commissioner Holian noted that the OSE is paying to have facilitated meetings; Rosemary Romero is facilitating the meetings for the Jemez-Sangre region. Amy Lewis is the one who will put in our updates to the plan, she wrote the previous water plan.

Mr. Otto added that another aspect of having the 16 regional plans now, it gives us an opportunity to see what those regions are doing and having the state support is extremely beneficial. Having a staff member and facilitator is helpful.

Commissioner Holian said that Santa Fe County is participating actively and committing staff to this endeavor. The city is also participating cohesively with the County. There is a tremendous amount of data in the plan. There are also population projections in this updated plan. It was noted that there is a tremendous amount of data that they have pulled together and will be very relevant to what we want to do here. After reading the report, it reflects that the temperature in our region has increased by 1½ degrees Fahrenheit which is twice what the global average is since the 70s. There are many up to date reports on the website. Commissioner Holian will provide electronic and paper copies of the report to the committee members.

There is also a description of the process with a list of the major issues that have been identified in our region. This also has information on land reclamation, we recognize that healthy land creates better water sheds which improves our ground water supply and it also protects us from devastating wild fires. It does not only have to do with water it goes with the Environmental Committee. All the meetings are open to the public and Commissioner Holian will provide the dates and times for meetings.  
Document: Jemez y Sangre Regional Water Plan

Commissioner Holian said they need to come up with a plan for public outreach meetings and bring forward other information we are working on.

Ms. Schruben added comments on the food plan, the Food Policy Council will be having a retreat at the end of February/March and out of that they will create three action items for each section that they plan to take on for this year and for 2017 and later. It was recommended to invite the Food Policy Council to present that information to SSFC. Mr. Alejandro is the staff person for the Food Policy Council.

Commissioner Holian said that they need to come up with a plan for a Public Outreach effort. It was requested that the SSFC members send ideas to her. Goal is education and to try to get people to help us prioritize, we have list of projects and programs that we would like to do but we only have so much money to do it. We need to list the key issues also list the goals for the County.

Ms. Beth Beloff noted that Commissioner Holian would be released as Chair from the Environmental sub-committee and she will Chair. A request was made for a co-chair; with no volunteers Mr. Alejandro will assist the Chair.

Mr. Teijender Ciano – Waste sub-committee: 1<sup>st</sup> meeting next Friday.

Building Environment meeting next week – Amanda Hatherly  
Commercial – there is a lot of work being talked about. Energy efficiency, all of our existing buildings have a huge way to go before they are -

commercial buildings by 2030. Energy efficiency alone will not cut it. Next meeting is next Tuesday at 10:30 am at the Home Builders office. Ms. Hatherly provided information on energy efficient opportunities for homes.

Education Sub-committee – Meeting next week. 1<sup>st</sup> meeting was good, education is a cross cut – but the identified goals were not as clear. Early Childhood Education Initiative is one of the Mayor's goals, how do you involve them? SSFC will identify creative ways to partner to make the key priorities in those recommendations feasible.

Adam Schlachter: Suggested that we check with Joe Abeyta who runs the city television network, public access television and radio station at the college.

John Alejandro: There are two goals for the Education committee, public relations and marketing and the other is to figure out how do you take ideas and make them an actionable item. Mr. Alejandro provided some educational examples that are readily available. Need to look at programs that are successful and how we can partner or integrate them in to the school, i.e., volunteers, earth care, etc., promote education. Los Alamos National Laboratory has a tremendous amount of educational material, science kites, speakers, etc. A good place to start is to look at best practices from other states to see what they have done and how we can bring it to our states.

Survey Update: John Alejandro – with the legislative session happening – Brian Sanderoff has not been available to talk. Timeline: End of February.

John Alejandro: In the Mayor's state of the city speech he talked about creating part of these projects and he talked about taking a chunk of the water fund, putting it into the State Investment Council and having them invest it and drawing off of the revenue to fund those types of programs related to Sustainability and poverty issues. The hope is that this would be an annual source of funding that can be leveraged to administer programs in the community. Mr. Alejandro recommended that the plan not focus solely on the city doing everything. There are so many non-profits and organizations that will work with us to move forward.

The Chair asked that any committee meetings scheduled be sent to her and to Mr. Alejandro for attendance.

#### **H. ITEMS FROM THE CHAIR & CO-CHAIR**

**Chair:** In the Mayor's state of the city speech he talked about creating an office of Sustainability. This was a very high priority from the Climate Action Task Force. The Mayor is not only recommending a Verde Fund to address poverty and climate change equally and bring resources and investments but hopes to create a Sustainable office. The Mayor would like for this to have high priority and have teams ready to carry forth some of the recommendations. Mr. Alejandro will continue to update the timeline.

**I. ITEMS FROM COMMISSIONERS**

Mr. Hirsh asked Ms. McDonald if there are ways we can address water for better water quality in our community. Ms. McDonald noted that the Water Division does an annual report that is posted on the website.

Santa Fe Forward is going to have a meeting on Saturday to talk about how to support the Verde fund.

**J. ITEMS FROM STAFF**

None

**K. ITEMS FROM THE PUBLIC**

Next issue of Green Times - please submit articles for the March issue.

**L. ITEMS FOR NEXT AGENDA**

Possible presentation from the Food Policy Council.

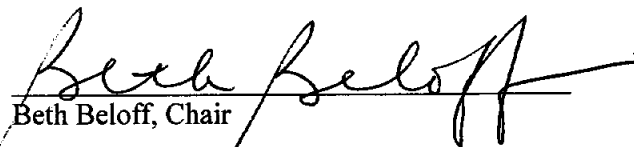
**M. NEXT MEETING**

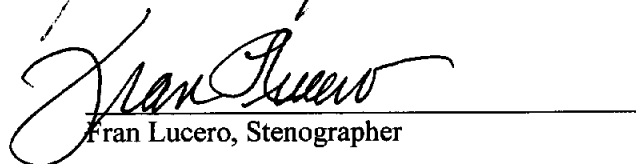
March 16<sup>th</sup>

**N. ADJOURN**

There being no further business to come before the Sustainable Santa Fe Committee, the meeting was adjourned at 6:00 pm.

Signature Sheet:

  
Beth Beloff, Chair

  
Fran Lucero, Stenographer

CITY OF SANTA FE, NEW MEXICO

RESOLUTION NO. 2016-\_\_

INTRODUCED BY:

Councilor Peter Ives

Mayor Javier Gonzales

Councilor Joseph Maestas

DRAFT

A RESOLUTION

DIRECTING THE CITY MANAGER TO DEVELOP A STORMWATER  
MANAGEMENT PROGRAM THAT UPDATES THE CITY'S STORMWATER  
MANAGEMENT POLICIES IN FURTHERANCE OF THE CITY'S ENVIRONMENTAL  
PROTECTION AND SUSTAINABILITY POLICIES AND GOALS.

WHEREAS, the City of Santa Fe and the State of New Mexico ~~are in arid climates and~~  
have experienced drought conditions for many years, putting strains on available water  
resources, riparian areas and aquifer recharge;

Deleted: have

WHEREAS, stormwater management by the Public Works Department's Streets and  
Drainage Division is accomplished through the operation and maintenance of the City's drainage  
infrastructure (arroyos, streets, curbs, drainage structures, culverts, erosion control structures,  
washouts, etc.);

Deleted: acequias

WHEREAS, minimizing pollutants in stormwater is essential for maintaining compliance  
with the Environmental Protection Agency's (EPA) Clean Water Act, the EPA's new clean water  
rule (2015), the National Pollutant Discharge Elimination System (NPDES) and Municipal  
Separate Storm Sewer System (MS4) permit program;

*Yribita*

1       **WHEREAS**, green infrastructure is an approach to stormwater management that  
2 protects, restores, or mimics the natural water cycle and reduces the need for conventional  
3 infrastructure by reducing stormwater volume, and improve water quality by reducing pollutant  
4 loads, stream bank erosion, and sedimentation.

Deleted: ing

5       Whereas the urban reaches of the Santa Fe River have been listed as an impaired  
6 waterbody for specific contaminants under Section 303(d) of the federal Water Quality Act (aka,  
7 Clean Water Act) attributed primarily to stormwater flows;

8       Whereas, this impairment will result in the adoption of Total Maximum Daily Loads  
9 (TMDLs) by the New Mexico Environment Department and the New Mexico Water Quality  
10 Control Commission for these contaminants;

11       Whereas these TMDLs will result in more restrictive permit requirements and controls  
12 for any current or new point source and non-point sources to the Santa Fe River, including the  
13 City's MS4 (Stormwater) Permit in the future;

14       **WHEREAS**, through the Public Works Department's River, Watershed & Trails  
15 Division, the Water Division, and the Santa Fe River Commission the City is currently  
16 implementing the Alameda Rain Gardens, a green infrastructure program;

17       **WHEREAS**, the City's Land Use Department has implemented green codes that  
18 encourage infiltration and green infrastructure measures;

19       **WHEREAS**, the City's Water Conservation Office has created rebates and incentives for  
20 passive and active rainwater systems;

21       **WHEREAS**, green infrastructure must be a part of the Sustainable Santa Fe  
22 Commission's 2040 goals;

23       **WHEREAS**, the City should continue to explore all available means to encourage and  
24 incentivize private individuals, commercial enterprises and governmental entities to use rainwater  
25 resources;

1       **WHEREAS**, the City should work to ensure the availability of all legal supplies of water  
2 for the benefit of the City of Santa Fe;

3       **WHEREAS**, the City will ensure its long-term sustainability and build resiliency within  
4 the City of Santa Fe by ensuring that it uses all water resources legally available;

5       **WHEREAS**, rain events are increasing in intensity and quantity in Santa Fe, and the City  
6 needs to develop and implement its long-term plan to deal with stormwater to ensure that it does  
7 not degrade the water quality of the SF River and its tributaries, is not destructive to private or  
8 public property and infrastructure, and ensure that it is used in beneficial ways;

9       **WHEREAS**, the City should promote and emphasize utilizing green infrastructure to  
10 slow down runoff, increase stormwater infiltration, prevent the transport of pollutants from urban  
11 and commercial areas, and maximize the benefits derived from precipitation events;

12       **WHEREAS**, the City should explore the expansion of its urban trails system along  
13 existing arroyos to promote healthy lifestyles and public safety; and

14       **WHEREAS**, implementing this Resolution, increasing green infrastructure, and  
15 managing stormwater as a resource will promote the well-being and health of the people of Santa  
16 Fe and will help build community;

17       **WHEREAS**, if the City needs to contract with a third party to explore the matters set  
18 forth herein, the City's Water Fund can be used to accomplish the purposes of this Resolution.

19       **NOW THEREFORE, BE IT RESOLVED BY THE GOVERNING BODY OF THE**  
20 **CITY OF SANTA FE** that under guidance of the city manager, city staff is directed to research,  
21 evaluate and report on current stormwater management policies that:

- 22       1. Employ and promote green infrastructure in all city infrastructure projects and  
23       improvements;
- 24       2. Examine and implement ways to slow stormwater down, making it less destructive,  
25       and allowing it to infiltrate better;

- 1 3. Foster the Santa Fe River Commission's participation in the Santa Fe River Corridor
- 2 Master Plan;
- 3 4. Promote and further the City's urban watershed policy, employing green
- 4 infrastructure improvements in all Public Works projects (roads, parks, trails, etc.) to
- 5 infiltrate stormwater, and use it more productively in parks and public places to
- 6 decrease irrigation costs and prevent the runoff of fertilizers, waste-products and
- 7 other contaminants;
- 8 5. Examine ways in which stormwater can be used productively in Santa Fe;
- 9 6. Facilitate collaboration among the Public Works Department, Parks and Recreation
- 10 Department, Public Utilities ~~Department~~ City Land Use Department, and private
- 11 stakeholders to evaluate the creation of a Santa Fe Arroyo and Flood Control District,
- 12 in cooperation with the County of Santa Fe;
- 13 7. Evaluate the nature and extent ~~for the possible expansion of City jurisdiction over~~
- 14 arroyos and other waterways throughout the City of Santa Fe, allowing for improved
- 15 arroyo management by the city and the extension of trail systems;
- 16 8. Develop a thorough and mapped understanding of the current stormwater system,
- 17 including existing city drop inlets, storm drains, pipes, and ~~outlet structures that flow~~
- 18 directly into the arroyo system and the Santa Fe River;
- 19 9. Consider how Public Works projects and private developments can create
- 20 opportunities for an integrated approach to stormwater management;
- 21 10. Provide recommendations from staff that would coordinate the efforts of the above
- 22 mentioned departments, commissions, committees and other entities to maximize
- 23 opportunities, while eliminating duplicative efforts.

24 **BE IT FURTHER RESOLVED** that the City Manager shall present a preliminary  
25 report with recommendations for the development of an updated stormwater policy within 120

Deleted: Water Division

Deleted: and

Deleted: flow



1 days of the adoption of this resolution.

2 PASSED, APPROVED AND ADOPTED this \_\_\_\_\_ day of \_\_\_\_\_, 2016.

3  
4 \_\_\_\_\_  
5 JAVIER M. GONZALES, MAYOR  
6

7 ATTEST:

8  
9 \_\_\_\_\_  
10 YOLANDA Y. VIGIL, CITY CLERK  
11

12 APPROVED AS TO FORM:

13 \_\_\_\_\_  
14 KELLEY A. BRENNAN, CITY ATTORNEY  
15  
16  
17  
18  
19  
20  
21  
22  
23  
24  
25

1  
2  
3  
4  
5  
6  
7  
8  
9

10 *M/Legislation/2016 Resolutions/Urban Stormwater Policy 2\_2\_16*

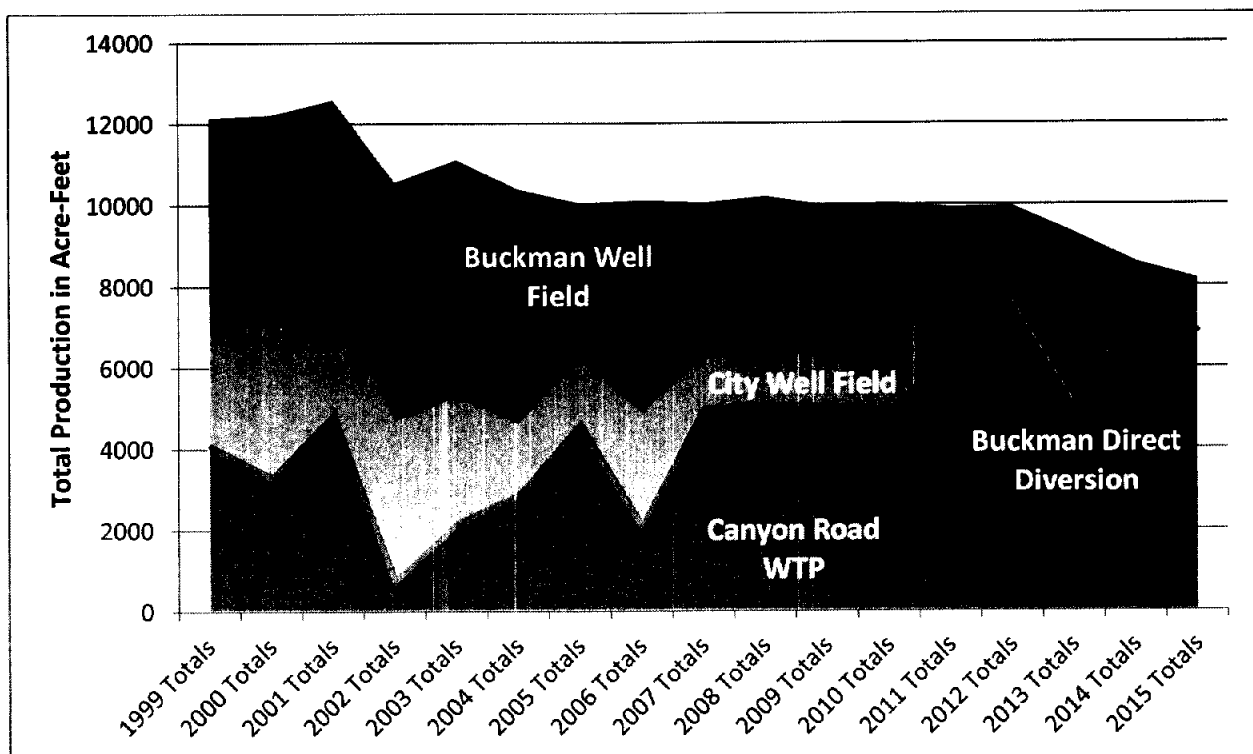
# Santa Fe's Water Resources:

## Managing for Long Term Resiliency

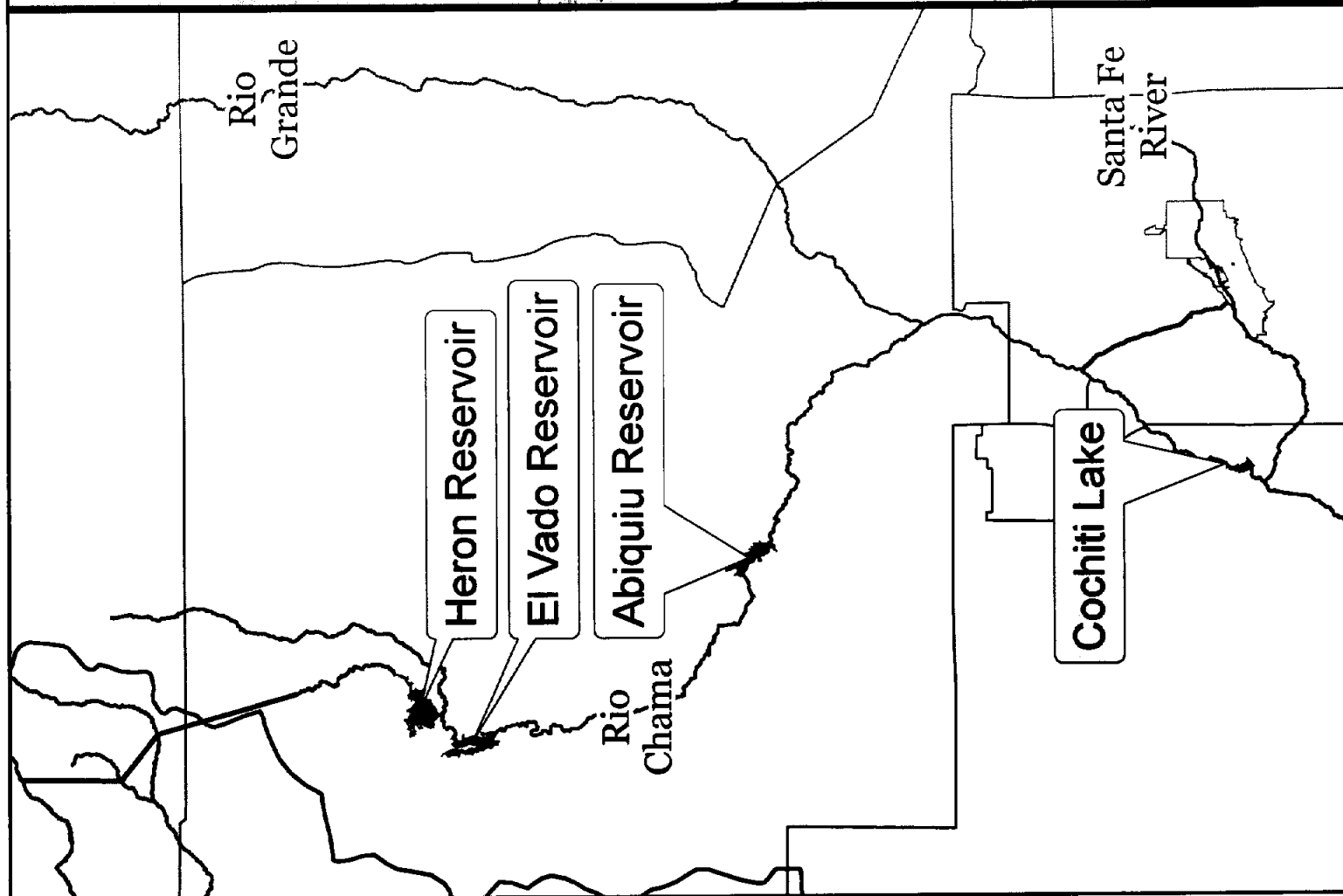
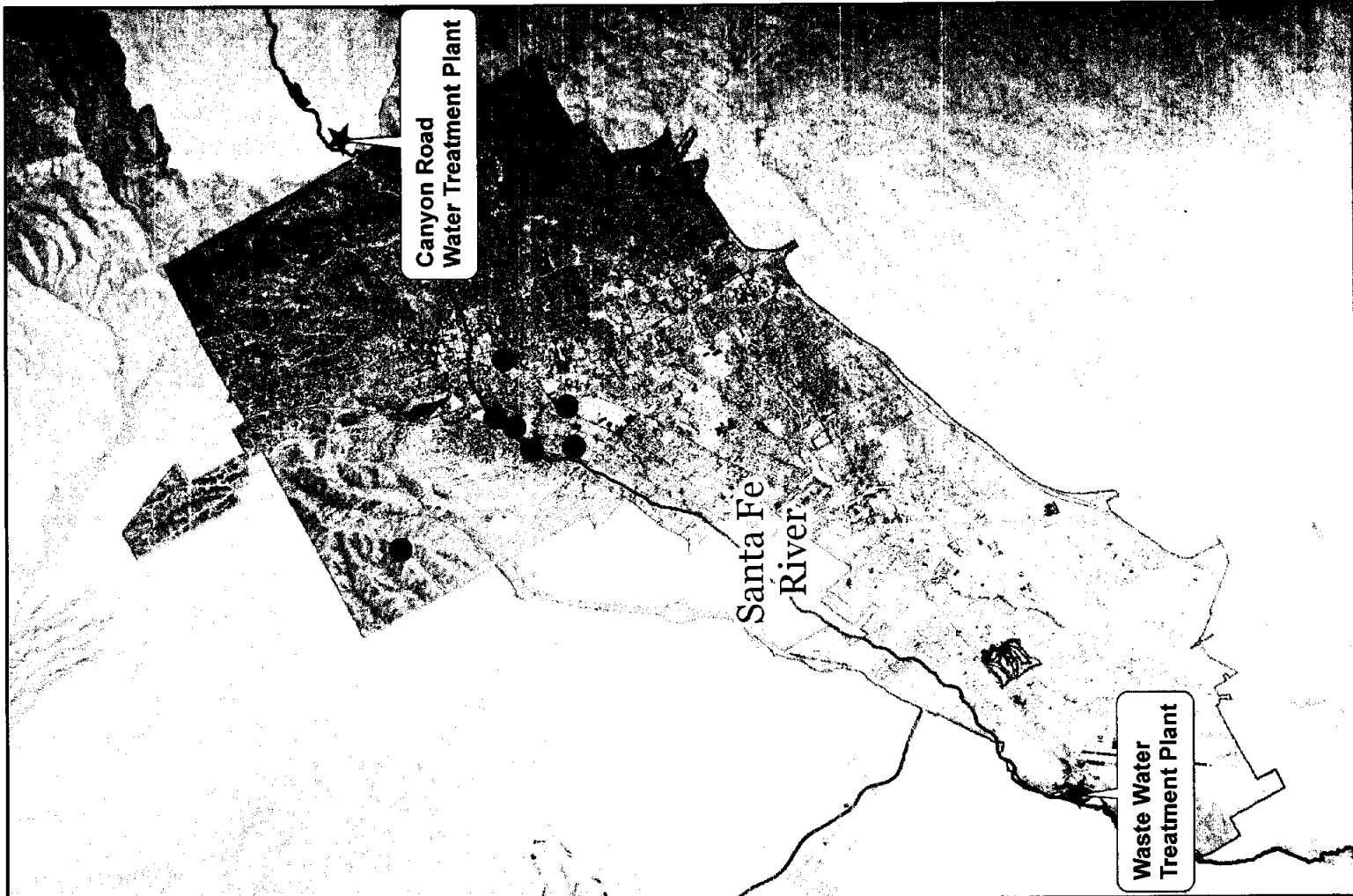
The City of Santa Fe has long been a leader in municipal water conservation,

- **Annual Demand has dropped** from ~12,600 afy in 2001 to ~8200 afy in 2015; the service population has increased ~30% in that time
- **Groundwater use has diminished** from 93% in 2002 (drought year) to 15% in 2015 (wet year)
- **Water Conservation Measures have reduced per capita demand** from 168 gallons per capita per day in 1995 to 95 GPCD in 2014, among the lowest in the west
- **Reclaimed Water is being used to irrigate** the newly opened SWAN Park and is being researched as an additional source of supply to meet future demand
- **Intake structures at Nichols and McClure have been rebuilt** and are presently refilling with future drinking water
- **Santa Fe has a Diverse Water Portfolio** consisting of 4 direct sources (2 ground; 2 surface) and 2 indirect sources (reuse & conservation)

Source of Supply		Quantity (afy)	% of Total	Quantity by Source (afy)	% by Source
Groundwater	City Well Field + St. Mike's	624	7.5%	1252	15%
	Buckman Well Field	628	7.5%		
Surface Water	San Juan – Chama Project (BDD)	3510	43%	6912	85%
	Santa Fe River	3402	42%		
TOTALS		8164	100%	8164	100%



*Exhibit B-1*



## Program Overview

- Implementing Sector: State of New Mexico
- Category: Financial Incentive
- State: New Mexico
- Incentive Type: PACE Financing
- Web Site: <http://www.emnrd.state.nm.us/ECMD/CleanEnergyTaxIncentives/PACE.html>
- Administrator: Programs administered locally
- Start Date: 07/01/2009
- Eligible Renewable/Other Technologies:

Solar Water Heat, Solar Space Heat, Geothermal Electric, Solar Thermal Electric, Solar Photovoltaics, Wind (All), Geothermal Heat Pumps, Wind (Small)

- Applicable Sectors: Commercial, Residential
- Terms: Determined locally

## Summary

*Note: In 2010, the Federal Housing Finance Agency (FHFA), which has authority over mortgage underwriters Fannie Mae and Freddie Mac, directed these enterprises against purchasing mortgages of homes with a PACE lien due to its senior status above a mortgage. Most residential PACE activity subsided following this directive; however, some residential PACE programs are now operating with loan loss reserve funds, appropriate disclosures, or other protections meant to address FHFA's concerns. Commercial PACE programs were not directly affected by FHFA's actions, as Fannie Mae and Freddie Mac do not underwrite commercial mortgages. Visit PACENow for more information about PACE financing and a comprehensive list of all PACE programs across the country.*

Property-Assessed Clean Energy (PACE) financing effectively allows property owners to borrow money to pay for energy improvements. The amount borrowed is typically repaid via a special assessment on the property over a period of years. In 2009 New Mexico enacted two separate bills authorizing local governments to offer these types of programs using different mechanisms. (Not all local governments in New Mexico offer PACE financing; contact your local government to find out if it has established a PACE financing program.)

## Renewable Energy Financing District Act

New Mexico enacted S.B. 647 in 2009, which authorizes municipalities and counties to create renewable energy financing districts (REFD) for the purpose of providing financing for consenting property owners within the district to install renewable energy technologies. Eligible technologies include photovoltaics, solar thermal, geothermal, and wind.

*Mr. McGowan's Report  
Exhibit C*

A county is authorized to create a REFD in both its unincorporated and incorporated areas (provided that the county receives the consent of the impacted municipalities in an incorporated area). A municipality may create a REFD within its borders.

Municipalities and counties must follow the same process for establishing a REFD. First, it must draft and adopt a resolution that includes specific details of the district, such as the types of renewable energy technologies to be included. After passing the resolution, the county or municipality must hold a public hearing and solicit feedback from stakeholders. Finally, after considering the opinions and comments, it is required to establish the REFD by way of ordinance. Once the district is formed, individual property owners may opt in to participate per the terms of the program. Any financing a property owner receives is repaid as an assessment on their property tax and will be a senior lien on the property until fully repaid. The district may issue bonds to fund financing programs and the standards for the district board's roles and powers.

Each district will be governed by a district board of five members. These members may be from the local government or individuals appointed by the local government (either way, the makeup of the board must be specified in the resolution and subsequent ordinance).

### **Solar Energy Improvement Special Assessment Act**

New Mexico also enacted H.B. 572 in 2009, which authorizes a county to pass an ordinance that creates a "solar energy improvement special assessment" provision. The county itself is not authorized to provide funding directly to property owners; rather, it creates rules for certifying certain private banks and financing institutions as "solar energy improvement financing institutions."

Solar energy improvement financing institutions are authorized to loan property owners up to 40% of the assessed value of the property for purposes of solar energy (photovoltaic or solar thermal) improvements. The property owner will enter into a direct agreement with a certified financial institution for the funding and they will be required to apply to the county as well, since the loan through the private institution will be paid via an assessment on their property tax and will constitute a lien on the property. The county devises the process for transferring funds collected via the special assessment to the participating financial institution. No county may pass an ordinance that contains additional provisions to those outlined in the law (e.g., an ordinance may not require property owners to receive an energy audit as a condition of participation).

### **Authorities**

- Name: N.M. Stat. § 5-18-1, et seq.
- Date Enacted: 04/10/2009
- Effective Date: 07/01/2009
- Name: N.M. Stat. § 4-55C-1, et seq.
- Date Enacted: 04/09/2009
- Effective Date: 07/01/2009



## ***ISC Regional Water Planning Update***

---

November 2015

Dear Interested Stakeholder:

I want to thank you for your ongoing efforts in support of effective regional and state water planning, and to provide some information on the status of the regional water plan process going forward.

The Interstate Stream Commission (ISC) is nearing completion of our internal review of the 16 Draft Regional Water Plan updates and will begin this month to disseminate a few each week to the regions. The goal is to have all draft plans finalized and accepted by the ISC Commissioners by the end of 2016.

### **Background**

In 2013, the ISC revised its updating methodology to ensure concurrent and consistent updating of all 16 regional water plans. As part of this process, the ISC adopted a "common technical platform" approach to be used as a foundation from which each region can then develop plan details. Unchanged from the previous water plan development, a representative steering committee from each region is organized to work closely with the ISC to update their respective region's plan.

A significant component of the common technical platform approach is the use of an "administrative water supply" method for determining each region's present and future water supply. This approach is based on legal and administrative constraints coupled with hydrological data and trends. The state adopted the common technical platform in part to provide greater interregional consistency in addressing water supply and demand challenges and to foster improved coordination and cooperation on interregional and statewide water management issues. The revised update approach is detailed in the "2013 Updated Regional Water Planning Handbook: Guidelines to Preparing Updates to New Mexico Regional Water Plans" ("Handbook") available on the Office of State Engineer website: <http://www.ose.state.nm.us/Planning>.

The ISC is optimistic that this approach will help make it easier to implement the policies, programs and projects contained in your updated regional water plans. The state's major water infrastructure funding source, the Water Trust Board, uses as a funding criterion for proposed projects whether that project or program is included in an "ISC-accepted Regional Water Plan" (from Water Trust Board Project Management Policies, Section 1.3 Project Prioritization). The Water Trust Board also looks to the State Water Plan for guidance in identifying priority statewide projects and programs. Ensuring consistency between the 16 regional water plans is essential to effectively integrate them into the State Water Plan,

as required by law. The State Water Plan will be updated from the current 2003 State Water Plan once all of the 16 updated Regional Water Plans are accepted by the ISC.

### **Current Status and Next Steps**

Over the past year and a half, the ISC and planning regions worked together to reconstitute and assemble the 16 regional steering committees per the 2013 Updated Regional Water Planning Handbook. The ISC, with its contractors' assistance, then worked with those regional steering committees to develop implementable strategies for solving each region's water challenges, which were incorporated into the draft regional water plans currently being reviewed by ISC. Meetings in your region will recommence when your region's updated draft plan is received by the Steering Committee for your review and input. ISC will send out to the steering committees the draft plan, along with guidance about how input will be gathered and addressed.

In order to complete all 16 regional plan updates within the next year, the ISC and its regional facilitators will be staging our work with the regions over the course of the year, and we will keep all the regions apprised of any scheduling changes. We ask that you have patience with this process and respect deadlines as provided by the facilitators for your region. The process going forward is generally as follows for all regions:

1. The ISC Water Planner will email to each region's steering committee that region's draft plan, providing as much time as possible in advance of your region's first ISC-facilitated meeting.
2. The ISC facilitator for your region will be in contact with your region (steering committee and interested stakeholders) about your first ISC-facilitated regional steering committee meeting. We encourage each steering committee to meet in advance of that meeting to internally review and discuss your draft.
3. ISC will be providing 3 facilitated meetings in your region.
4. ISC contractors will continue to coordinate with your steering committees on the dates and locations, as we did last year. More information on region-specific deadlines will be provided at your first meeting.

Information about the Interstate Stream Commission's state and regional water planning program is available on the OSE website. If you have questions or comments, please email us at [ISC.WaterPlanning@state.nm.us](mailto:ISC.WaterPlanning@state.nm.us). Please feel free to share this information.

Thank you for your interest and involvement in water planning in the State of New Mexico.

Sincerely,

Deborah K. Dixon, P.E.

Director

Interstate Stream Commission

*The ISC Regional Water Planning Program*



*Engaging Mutual Domestics*



## Interstate Stream Commission Regional Water Planning Program

### Jemez y Sangre Regional Water Plan

For Discussion February 5, 2016

## Key Issues in Planning Region and Related Proposed PPPs

### 1. Protect Existing Supplies

- a. Forest health and restoration/forest fire prevention
- b. Long-term water level decline and impacts on La Cienega Springs
- c. Building resiliency of infrastructure under climate change (bridges and culverts)-SF Co GIS infrastructure mapping
- d. Augmented recharge from storm water management
- e. Lower SF River management plan (SF Co)
- f. Groundwater monitoring (La Cienega, Espanola Basin model, EBTAG) (SF Co)
- g. Water quality monitoring for non PWS wells (SF Co) *Public Water System*
- h. Santa Cruz Flood Control (Dam rehab and barriers) (SFP SWCD)
- i. Mitigate flood with Earthen embankments (Santa Clara Pueblo)
- j. Post-fire restoration (Bandelier) (NMED)
- k. Rio Grande Corridor Restoration at Buckman (NMED)
- l. Hexavalent chromium in regional aquifer beneath Los Alamos and other contaminants in surface water on the Pajarito Plateau (PPP?)

### 2. Improve System Efficiency

- a. Drinking water system technical assistance (SF Co)
- b. Acequia infrastructure maintenance and upgrade financing
- c. Regionalize water infrastructure (SF Co)
- d. Regionalize Wastewater System (SF Co)

3. Mitigate Drought

- a. Emergency stages for drought (SF Co)

4. Reduce Demand

- a. San Juan-Chama canal lining
- b. Use of reclaimed wastewater (City and Co of SF)
- c. Use restrictions on lots (SF Co)
- d. Roof-top harvesting (SF Co)
- e. Metering of domestic wells (SF Co)
- f. Collect and Analyze Agricultural Data for conservation (SF Co)

5. Increase Supply

- a. Implementation and funding of the Aamodt Settlement
- b. San Juan-Chama Diversion for Los Alamos
- c. Return flow credit application for City of SF

6. Others?

**Jemez y Sangre Regional Water Plan Update**  
**Survey of Water Systems**  
**March 2015**

Date \_\_\_\_\_

1. Name of Water System or Governmental Entity and person and title completing the survey  
*(Acéquia, Mutual Domestic, County, Municipality)* \_\_\_\_\_

2. Actions under **Category I: Protect Existing Supplies** (Please check all boxes that apply and describe in space provided [For past or future projects use attached forms]).

Current	Reports, Data available	Proposed	May consider in the future	
<input type="checkbox"/>	<input type="checkbox"/>	<input type="checkbox"/>	<input type="checkbox"/>	Forest restoration project
<input type="checkbox"/>	<input type="checkbox"/>	<input type="checkbox"/>	<input type="checkbox"/>	Riparian restoration project
<input type="checkbox"/>	<input type="checkbox"/>	<input type="checkbox"/>	<input type="checkbox"/>	Develop storm water management ordinance
<input type="checkbox"/>	<input type="checkbox"/>	<input type="checkbox"/>	<input type="checkbox"/>	Projects to improve resilience under climate change
<input type="checkbox"/>	<input type="checkbox"/>	<input type="checkbox"/>	<input type="checkbox"/>	Develop well field management plan
<input type="checkbox"/>	<input type="checkbox"/>	<input type="checkbox"/>	<input type="checkbox"/>	Propose conjunctive use of surface and groundwater supplies
<input type="checkbox"/>	<input type="checkbox"/>	<input type="checkbox"/>	<input type="checkbox"/>	Expand treatment facilities to remove trace constituents (i.e., arsenic)
<input type="checkbox"/>	<input type="checkbox"/>	<input type="checkbox"/>	<input type="checkbox"/>	Restrict drilling of domestic wells within your jurisdiction
<input type="checkbox"/>	<input type="checkbox"/>	<input type="checkbox"/>	<input type="checkbox"/>	Develop/explore methods for instream flow
<input type="checkbox"/>	<input type="checkbox"/>	<input type="checkbox"/>	<input type="checkbox"/>	Wastewater treatment plant construction, repairs, or upgrades
<input type="checkbox"/>	<input type="checkbox"/>	<input type="checkbox"/>	<input type="checkbox"/>	Acéquia bylaws to prevent water transfers out of acéquia
<input type="checkbox"/>	<input type="checkbox"/>	<input type="checkbox"/>	<input type="checkbox"/>	Other _____

3. Actions under **Category II: Improve System Efficiency** (Please check all that apply and describe in space provided [For past or future projects use attached forms]).

Current	Reports, Data Available	Proposed	May consider in the future	
<input type="checkbox"/>	<input type="checkbox"/>	<input type="checkbox"/>	<input type="checkbox"/>	Wastewater reuse project
<input type="checkbox"/>	<input type="checkbox"/>	<input type="checkbox"/>	<input type="checkbox"/>	Project to replace septic tanks and provide for regional WWTP
<input type="checkbox"/>	<input type="checkbox"/>	<input type="checkbox"/>	<input type="checkbox"/>	Line irrigation ditches/acéquias
<input type="checkbox"/>	<input type="checkbox"/>	<input type="checkbox"/>	<input type="checkbox"/>	Develop a regional water system authority
<input type="checkbox"/>	<input type="checkbox"/>	<input type="checkbox"/>	<input type="checkbox"/>	Aquifer storage and recovery project with wastewater
<input type="checkbox"/>	<input type="checkbox"/>	<input type="checkbox"/>	<input type="checkbox"/>	Aquifer storage and recovery project with surface water
<input type="checkbox"/>	<input type="checkbox"/>	<input type="checkbox"/>	<input type="checkbox"/>	Optimize reservoir management ( <i>sediment removal, evaporative loss reduction</i> )
<input type="checkbox"/>	<input type="checkbox"/>	<input type="checkbox"/>	<input type="checkbox"/>	Groundwater modeling studies
<input type="checkbox"/>	<input type="checkbox"/>	<input type="checkbox"/>	<input type="checkbox"/>	Water audits
<input type="checkbox"/>	<input type="checkbox"/>	<input type="checkbox"/>	<input type="checkbox"/>	Leak detection and repair
<input type="checkbox"/>	<input type="checkbox"/>	<input type="checkbox"/>	<input type="checkbox"/>	Aquifer injection
<input type="checkbox"/>	<input type="checkbox"/>	<input type="checkbox"/>	<input type="checkbox"/>	Drill replacement wells
<input type="checkbox"/>	<input type="checkbox"/>	<input type="checkbox"/>	<input type="checkbox"/>	Transfer water use associated with domestic wells to utility system
<input type="checkbox"/>	<input type="checkbox"/>	<input type="checkbox"/>	<input type="checkbox"/>	Other _____

4. Actions under Category III: Mitigate Drought (Please check all that apply and describe the proposed project in the space provided [For past or future projects use attached forms]).

Current	Reports, Data Available	Proposed	May consider in the future	
<input type="checkbox"/>	<input type="checkbox"/>	<input type="checkbox"/>	<input type="checkbox"/>	Water banking/temporary leases of water rights
<input type="checkbox"/>	<input type="checkbox"/>	<input type="checkbox"/>	<input type="checkbox"/>	Emergency conservation ordinance to restrict water use
<input type="checkbox"/>	<input type="checkbox"/>	<input type="checkbox"/>	<input type="checkbox"/>	Shortage sharing agreements (acéquias)
<input type="checkbox"/>	<input type="checkbox"/>	<input type="checkbox"/>	<input type="checkbox"/>	Other _____

5. Actions under Category IV: Reduce Demand (Please check all that apply and describe the proposed project in the space provided [For past or future projects use attached forms] and provide an estimate of the amount of water demand reduction (per capita and/or total annual).

Current	Reports, Data Available	Proposed	May consider in the future	
<input type="checkbox"/>	<input type="checkbox"/>	<input type="checkbox"/>	<input type="checkbox"/>	Manage growth and land use
<input type="checkbox"/>	<input type="checkbox"/>	<input type="checkbox"/>	<input type="checkbox"/>	Water conservation focused on outdoor use
<input type="checkbox"/>	<input type="checkbox"/>	<input type="checkbox"/>	<input type="checkbox"/>	Water conservation focused on indoor use for new construction
<input type="checkbox"/>	<input type="checkbox"/>	<input type="checkbox"/>	<input type="checkbox"/>	Water conservation focused on indoor use through retrofits
<input type="checkbox"/>	<input type="checkbox"/>	<input type="checkbox"/>	<input type="checkbox"/>	Water harvesting (rooftop)
<input type="checkbox"/>	<input type="checkbox"/>	<input type="checkbox"/>	<input type="checkbox"/>	Rate structure incentive for water conservation
<input type="checkbox"/>	<input type="checkbox"/>	<input type="checkbox"/>	<input type="checkbox"/>	Graywater harvesting
<input type="checkbox"/>	<input type="checkbox"/>	<input type="checkbox"/>	<input type="checkbox"/>	Rebates or other incentives to reduce demand
<input type="checkbox"/>	<input type="checkbox"/>	<input type="checkbox"/>	<input type="checkbox"/>	Wastewater reuse
<input type="checkbox"/>	<input type="checkbox"/>	<input type="checkbox"/>	<input type="checkbox"/>	Other _____

6. Actions under Category V: Increase Water Supply (Please check all that apply and describe in space provided [For past or future projects use attached forms]).

Current	Reports, Data Available	Proposed	May consider in the future	
<input type="checkbox"/>	<input type="checkbox"/>	<input type="checkbox"/>	<input type="checkbox"/>	Use San Juan-Chama water
<input type="checkbox"/>	<input type="checkbox"/>	<input type="checkbox"/>	<input type="checkbox"/>	Acquire and transfer groundwater rights to increase water supply.
<input type="checkbox"/>	<input type="checkbox"/>	<input type="checkbox"/>	<input type="checkbox"/>	Acquire and transfer surface water rights to increase water supply.
<input type="checkbox"/>	<input type="checkbox"/>	<input type="checkbox"/>	<input type="checkbox"/>	Use new domestic wells (72-12-1) for future growth
<input type="checkbox"/>	<input type="checkbox"/>	<input type="checkbox"/>	<input type="checkbox"/>	Drill additional municipal wells for future growth
<input type="checkbox"/>	<input type="checkbox"/>	<input type="checkbox"/>	<input type="checkbox"/>	
<input type="checkbox"/>	<input type="checkbox"/>	<input type="checkbox"/>	<input type="checkbox"/>	Appropriate flood flows during years when excess is available
<input type="checkbox"/>	<input type="checkbox"/>	<input type="checkbox"/>	<input type="checkbox"/>	Build new reservoirs
<input type="checkbox"/>	<input type="checkbox"/>	<input type="checkbox"/>	<input type="checkbox"/>	Brackish water desalinization
<input type="checkbox"/>	<input type="checkbox"/>	<input type="checkbox"/>	<input type="checkbox"/>	Increase water supply by obtaining return flow credits
<input type="checkbox"/>	<input type="checkbox"/>	<input type="checkbox"/>	<input type="checkbox"/>	Develop aquifer storage and recovery project (describe source of water)
<input type="checkbox"/>	<input type="checkbox"/>	<input type="checkbox"/>	<input type="checkbox"/>	Interbasin transfer
<input type="checkbox"/>	<input type="checkbox"/>	<input type="checkbox"/>	<input type="checkbox"/>	Other _____

**- Jemez y Sangre - Regional Water Plan Update – DRAFT Steering Committee**

**\*\*=not yet confirmed**

Members of the steering committee should fulfill one or more of the following criteria:

- Be or represent a water right owner.
- Be directly affected by the outcome of water management decisions.
- Have or represent the authority to make decisions and implement outcomes.
- Represent one or more of the water use groups listed below.

<b>Water User Group<sup>a</sup></b>	<b>Name<sup>b</sup></b>	<b>Organization / Representation</b>
Agricultural – groundwater user	Paul White	SF Basin Water Association
Agricultural – surface water user	Jose Varela Lopez	La Cienega
	Ken Salazar**	Santa Cruz Irrigation District
	David Ortiz**	Pojoaque Valley Irrigation District
	Alfredo Montoya	Las Nuevas Acequias
County government (Santa Fe)	Kathy Holian, Commissioner	Santa Fe County
	Claudia Borchert, Director, SF County Utilities	Santa Fe County
	Gerard Schoeppner, Hydrologist	Santa Fe County
	Hvtce Miller, ** Tribal Liaison	Santa Fe County
(Los Alamos)	Brian Bossert, Asst. Administrator	Los Alamos County
	James Alarid, Deputy Utility Manager	Los Alamos County
	Engineering	

<sup>a</sup> Updated Regional Water Planning Handbook: Guidelines to Preparing Updates to New Mexico Regional Water Plans (NM ISC, 2013), Section C.

<sup>b</sup> Regions may appoint multiple representatives in each category, as desired and appropriate.

**DRAFT**

Water User Group <sup>a</sup>		Water User Representative	Organization/Association
County government (Rio Arriba)	David Trujillo, Deputy County Manager		Rio Arriba County
	Lucia Sanchez, Director of Planning		Rio Arriba County
	Chris Madrid		Rio Arriba County
	Mike Garcia		Rio Arriba County
Municipal government (Santa Fe)	Patricia Velez, Councilor		Santa Fe
	Andrew Esteban (alternate)		
	Rob Cooper, Water		Santa Fe
	Alice Lucero, Mayor**		Espanola
	Alice Lucero, Mayor**		Espanola
	Peggy Sue Martinez** Councilor		
	Peggy Sue Martinez** Steven Trujillo, Water Supplier		Espanola Public Works
	Steven Trujillo, Water Supervisor		Espanola Public Works
Rural Water Provider	Jim Jenkins, President		El Dorado Water District
	David Chakroff, General Manager		El Dorado Water District
	Khalsa Mukhtiar**		Cuatro Villas Mutual Domestic Water Users
Extractive industry	Jakes Jordaan**		Santa Fe Gold
Environmental interests	Toner Mitchell		Trout Unlimited
	Paul Paryski John Buchser (alternate)		Sierra Club
Local business	Simon Brackley		SF Chamber of Commerce
	Kathy Keith, Executive Director		Regional Development Corporation

<sup>a</sup> Updated Regional Water Planning Handbook: Guidelines to Preparing Updates to New Mexico Regional Water Plans (NM ISC, 2013), Section C.

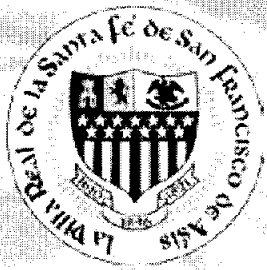
<sup>b</sup> Regions may appoint multiple representatives in each category, as desired and appropriate.

DRAFT

Water User Group <sup>a</sup>	Name <sup>b</sup>	Organization / Representation
Tribal	Ryan Swazo-Hinds	Tesuque
	Alyn Martinez	Pojoaque
	Philip Perez, Governor**	Nambe
		Ohkay Owingeh
		Santa Clara
Watershed Interest		San Ildefonso
	Andy Otto, Executive Director	Santa Fe Watershed Association
	Thomas Gonzales	USDA-NRCS
Federal agency (technical support to the region)	Sanford "Sandy" Hurlocker**	US Forest Service
	District Ranger, Espanola Ranger District, SF Natl. Forest	
	Duncan Sill	North Central Economic Development District
	Greg Kaufman	NMED- Surface Water Quality Bureau
	Jason Lithgow	State Land Office
State agency (technical support to the region)	Todd Haines	NM State Forestry
	Charlie Nylander	Jemez y Sangre chair
	Charles Vokes	Buckman Direct Diversion
Other groups as identified by the steering committee		

<sup>a</sup> Updated Regional Water Planning Handbook: Guidelines to Preparing Updates to New Mexico Regional Water Plans (NIM ISC, 2013), Section C.

<sup>b</sup> Regions may appoint multiple representatives in each category, as desired and appropriate.



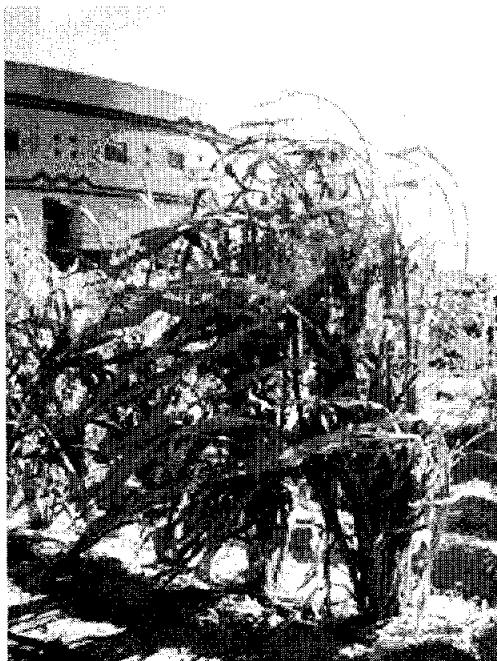
Planning for

# Santa Fe's Food Future

Querencia---

A story of food, farming and friends

A publication of the Santa Fe Food Policy Council  
October 2014





*The New Mexico landscape is one of many contrasts:  
deserts, mountains, meadows, orchards, and gardens;  
dry as the bones in the cemetery, our final resting place.  
Part of what defines our querencia,  
which gives us this sense of place, is our food,  
contrary to those who say that there can be no sense of place  
in today's global experiment.  
And our food cannot be separated from how we work the  
land and how we water our crops.*

*Again we learn from folklore:  
paravos, paranos, y para los animalitos de Dios;  
for you, for us, and for God's animals (and plants).  
Water is a don divino, a divine right,  
not a commodity to be sold to the highest bidder.  
This dry landscape,  
with a beauty only we might understand and find sustenance in,  
is what defines our querencia.*

**- Estevan Arellano**  
**New Mexican Historian, Farmer, and Writer**

## **TABLE OF CONTENTS**

<b>Executive Summary</b>	<b>1</b>
<b>The Santa Fe Food Policy Council</b>	<b>2</b>
<b>Food Plan Method</b>	<b>3</b>
<b>Strengthening the Food System for the Santa Fe Region</b>	<b>4</b>
<b>Food and Agriculture System Map</b>	<b>6</b>
<b>Recommended Policy Interventions</b>	
<b>Getting Food</b>	<b>8</b>
<b>Learning About Food</b>	<b>11</b>
<b>Growing Food</b>	<b>14</b>
<b>Thank You and Acknowledgments</b>	<b>23</b>
<b>At a Glance: Recommendations</b>	<b>24</b>



# Executive Summary

*Planning for Santa Fe's Food Future* was developed by the Santa Fe Food Policy Council to ensure that a safe, healthy, and affordable food supply will be available to all residents for decades to come. This tool examines various issues through the lens of food, including health, distribution, economy, education, agriculture, land and water conservation. It also bridges local, state, and national issues pertaining to food.

The Santa Fe Food Plan recommends a variety of actions designed to promote food security (availability of healthy food, which is affordable to all residents), improve access to retail food outlets that offer healthy and affordable food, encourage healthy eating by all residents to reduce obesity and diet-related diseases such as diabetes, educate consumers, support farmers and ranchers, enhance the food system infrastructure (distribution and storage facilities, transportation, processing), and protect the natural resources necessary to produce food. This is not a static document, but a dynamic one that is meant to be discussed, acted on, monitored, evaluated, and modified periodically.

This plan is divided into three sections: "Getting Food," "Growing Food," and "Learning About Food." Each section provides a list of recommendations that support that respective goal, and each of the recommendations identifies agencies and/or organizations that should take responsibility for its implementation.

In "Getting Food," the Food Plan encourages the Santa Fe community to use all available means to make healthy and affordable food accessible to its residents. To that end, the recommendations ask public officials to ensure that public transportation services can be easily used by residents to connect them to high quality retail food outlets.

The Food Plan's "Learning About Food" section underscores the connection between our food supply and healthy living. "Food is medicine" is not just a saying, but the best guidance one can receive when choosing what to eat and how to prepare it. The recommendations call for the widespread adoption of wellness policies, institutional practices, and educational programs that expand healthy community food environments and encourage responsible food choices for people of all ages.

The "Growing Food" section highlights the critical role that farmers and our region's natural resources play in ensuring our food supply. The recommendations strongly urge that city and county governments use all available authorities to promote new and existing gardening, farming, and ranching opportunities.

The Santa Fe Food Policy Council is respectfully requesting that the Santa Fe City Council and the Santa Fe Board of County Commissioners adopt *Planning for Santa Fe's Food Future: Querencia, A Story of Food, Farming, and Friends*. If adopted, the Food Plan should become the guiding document for City and County officials, food and farm organizations, and a variety of community groups that support healthy living, resilient communities and robust economies. It is expected that the full implementation of the Food Plan's recommendations will occur over three years. This collaborative effort is our foundation from which we build a food system that nourishes all people in our community in a just, sustainable, and regenerative manner.



# The Santa Fe Food Policy Council

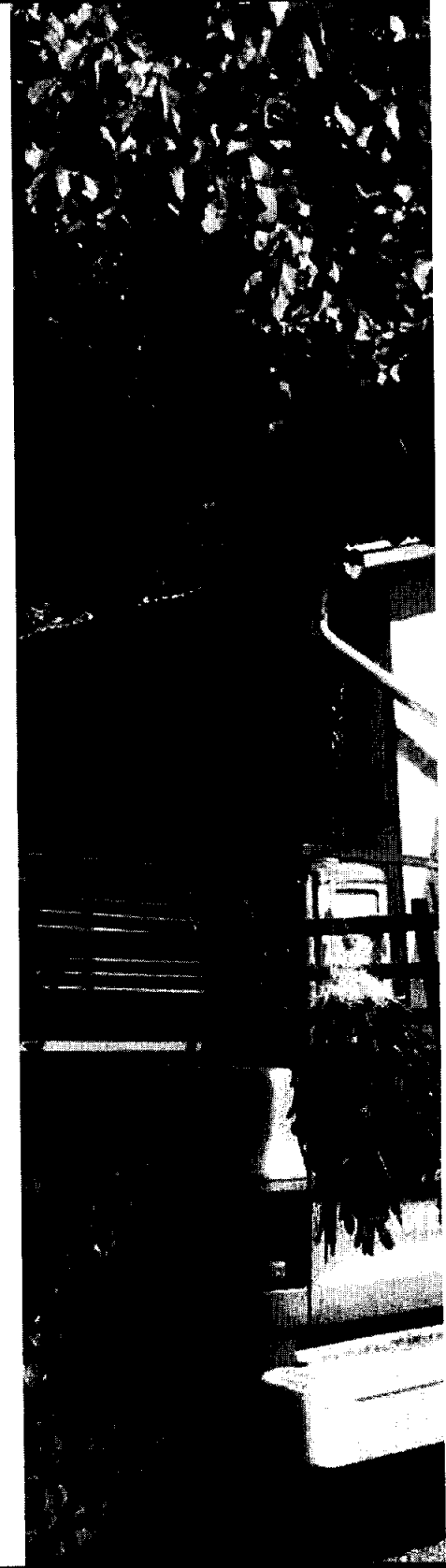
Starting more than 30 years ago, academic experts and food activists began to see that the food system was touching more and more parts of our lives. Environmental issues, public health, issues of social and economic justice were all part of a food system and had a direct bearing on the food we ate.

Food experts and activists realized that our food system was influenced by many factors including the marketplace and actions of local, state and federal governments. However, the average citizen didn't have much of a role in shaping them. One way to address this lack of participation was by creating food policy councils, to bring together all stakeholders in a community and give them a say in constructing a system that reflected their values.

Today's food policy councils come in different sizes and sometimes address different issues. But at heart they reflect the idea of food democracy. Achieving the goal of food security means bringing the bulk of society to work together to ensure there's enough affordable, easily accessible, and nutritious food for everyone.

Our local contribution to the growing national food policy council movement is the Santa Fe City and County Advisory Council on Food Policy. Established in 2008 by a joint City/County resolution, the Council's creation acknowledges a shared commitment to and concern for improving the local food production system and the importance of a vibrant and accessible "food future" for Santa Fe.

The Council is devoted to recommending laws, rules, and regulations that create and maintain a reliable and sustainable food system that nourishes everyone in the community. For more information, please go to [www.santafefoodpolicy.org](http://www.santafefoodpolicy.org).



# Food Plan Method



The Food Plan is the culmination of extensive community-level research that included interviews with hundreds of citizens, public and private officials, and food system stakeholders. It draws on the latest food, farm, and health related data relevant to the Santa Fe community. A review of current food system policies, programs, and regulations was also conducted. To the greatest extent possible, the Food Plan has aligned its recommendations with existing city and county plans including the County Health Action Plan, the County Sustainable Growth Management Plan, and the Sustainable Santa Fe Plan.

Data was referenced from a variety of resources available to our community: the Santa Fe Food Policy Council's Community Food Assessment, Santa Fe County 2013: A Community Health Profile, The Santa Fe County Health Action Plan, The City of Santa Fe's Sustainable Santa Fe Plan, The Sustainable Growth Management Plan (SGMP), and The Sustainable Land Development Code (SLDC), as well as a number of other local and state-wide research publications.

The Santa Fe Food Policy Council embarked upon a county-wide interview process, conducting over 60 interviews with stakeholders working in positions which relate to food access, health, education and production. We also held 6 Food Plan dialogue sessions in settings throughout Santa Fe County to learn about community members' first-hand experiences and priorities.

This process gave us the opportunity to understand how community members, agencies and Santa Fe City and County employees view their roles in changing the local food system. We inquired about the successes and challenges individuals have encountered while they live and work in the local food system. We captured visionary statements about how to improve our local food system relative to folks' daily routines, including how they take care of their families, make food choices, and interact with friends and neighbors to celebrate food.

# Strengthening the Food System in the Santa Fe Region

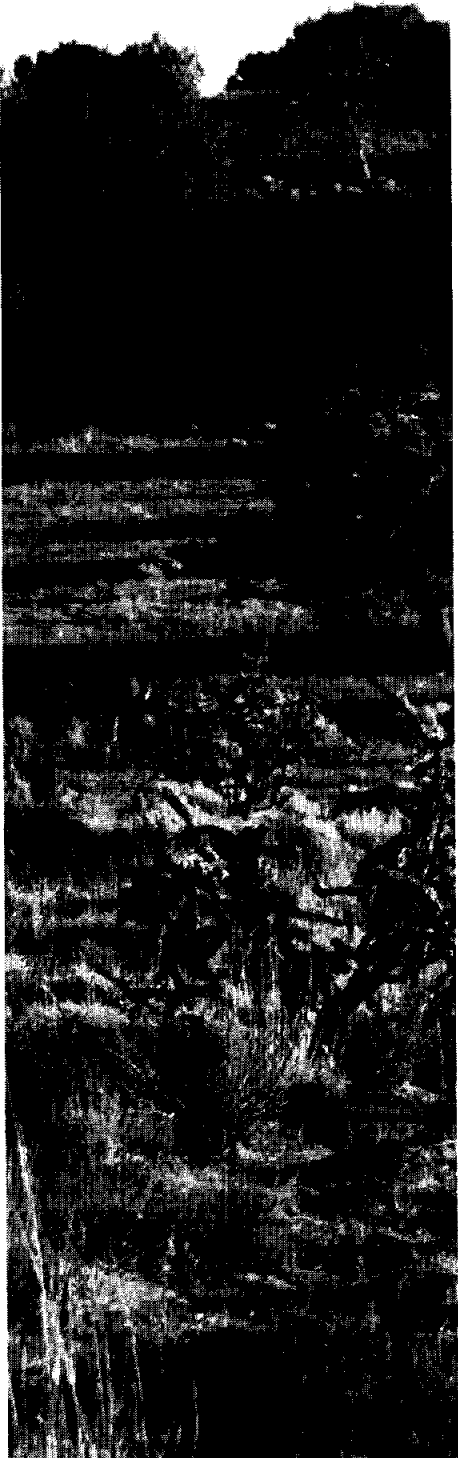
New Mexico has a rich agricultural heritage; the land we call home has been in production for thousands of years, supporting diverse populations throughout history. Farming and ranching have shaped lives and landscapes for many generations and this deeply forged connection is a unique part of our culture which remains intact amidst advancing technology of this age.

Today, the potential for our regional food system is unprecedented. New Mexicans, like many Americans, get most food from supermarkets which are served by vast and complex networks of transportation and storage. Veins of food travel throughout the country and world to reach homes here in Santa Fe County, with external producers and processors currently providing up to 98% of the food we access. Yet, another system exists within the national food network. Local markets in New Mexico and all over the country are increasingly providing a diversity of products which change with the seasons and celebrate wondrous varieties of regional seed stock. These local markets range from supermarkets that highlight local food to schools and other institutions buying more from local growers to farmers' markets, where the growers sell directly to the people.

The desire for bananas in winter and tastes from local soil necessitate a balanced partnership of local and global food supplies. We have an opportunity to blend the best of these systems and to create a resilient network of food. This work is essential as we strive to provide a range of culturally appropriate, affordable, and nutritious options for all Santa Fe City and County residents. It is important to be informed about how we can strengthen our food system for three major reasons:

1. Anyone who eats has a stake in the food system. Every dollar spent has a great impact. When we buy food for our family we are essentially voting by helping to make decisions about the cost of different types of food, which companies and businesses we want to see thrive, even what is on the shelves of the grocery store next time we go to shop.
2. Informed residents can help shape government policies that control food production and the availability of food products. These policy decisions include what foods will be supported through subsidies, what taxes and regulations farmers will be required to comply with, and what foods are available at what cost and where.
3. While many of us may take our food for granted, there are at least 21,270 individuals (14.9 %) living in Santa Fe County who do not know where their next meal comes from. This is equal to two times the total population of Espanola, New Mexico.





Within the City, nearly 10% of low income families live a mile or more from the nearest grocery store. These individuals not only have difficulty accessing healthy foods, but increasingly find themselves faced with only unhealthy food choices as nearly one-third of the restaurants in the county are fast food. Such limited access also contributes to a growing rate of obesity. With almost 30,000 county residents experiencing the effects of obesity, the current generation of youth is poised to be the first generation with a lower life expectancy than that of their parents. Limited access to fresh, affordable foods is a challenge for many of us. Thus, strengthening the food system in the Santa Fe region should be considered a major goal of our community.

For many, our relationship with food is changing. Our increased dependency on convenient and low cost food options means we rely more and more on heavily processed foods. Schools, senior centers, hospitals, and even restaurants are forced to view price as the deciding factor when choosing what ends up on the menu. These factors limit our ability to make independent food choices, to retain our cultural food traditions and to live healthy, active lifestyles.

While this is our current reality, let us work together to create an alternative.

Let us imagine a world in which:

- ✎ **food is valued at its true cost, while remaining available & affordable for all**
- ✎ **farmers and ranchers can make a living stewarding our rich agricultural traditions**
- ✎ **our respect for the land is upheld by all who inhabit it**
- ✎ **healthy foods color the plates of our children, elders and families**
- ✎ **food choices are determined not by price, but by what is good for our bodies and supports our traditions**
- ✎ **regulations are common sense and policies support our vision**
- ✎ **food is simple, celebrated, and of course, local**

*"We have made the food system that we have... we have made it the way it is and we can make it a different way."*

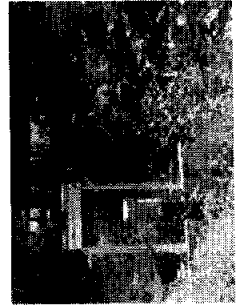
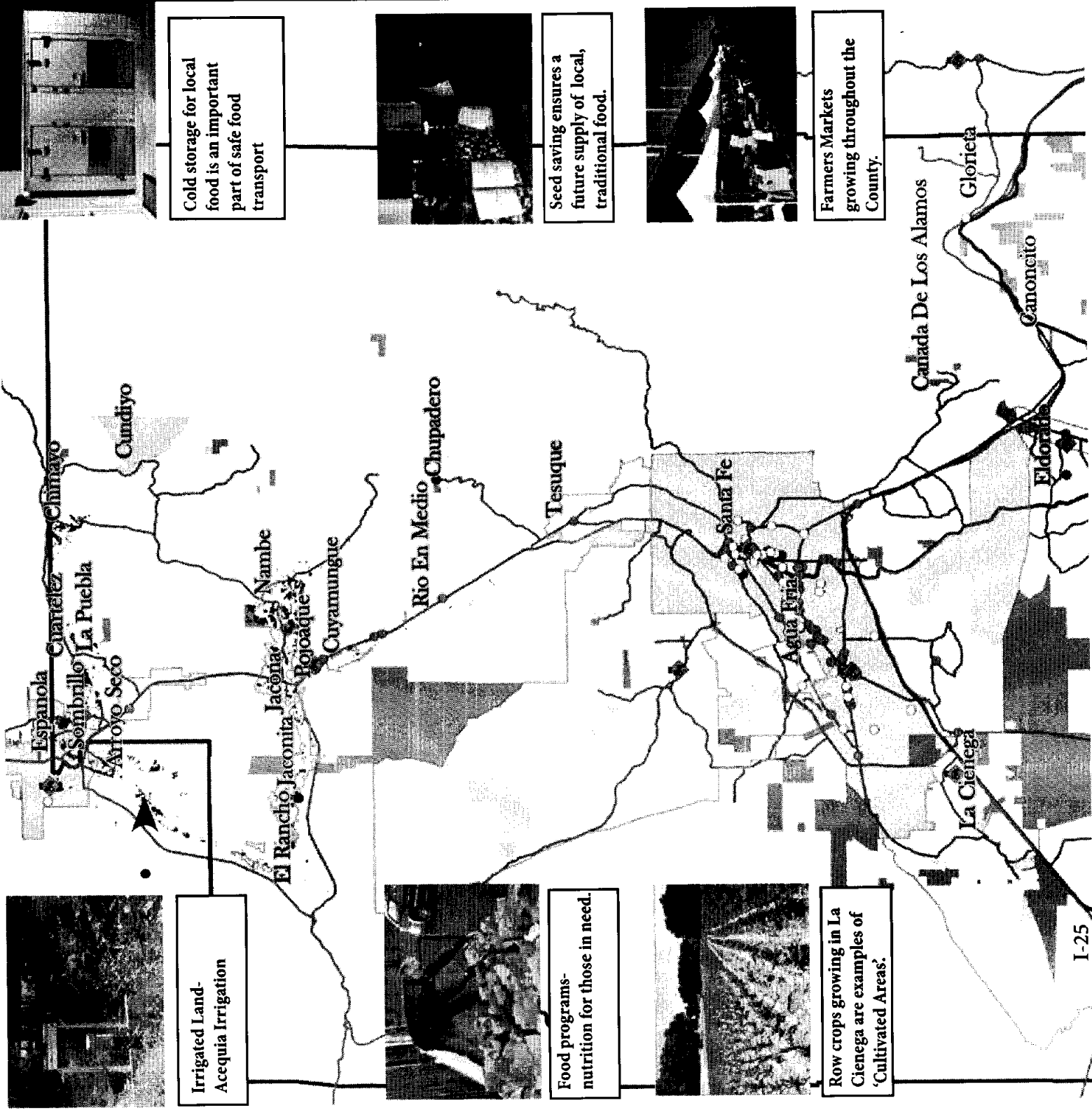
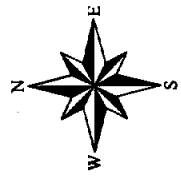
- Ricardo Salvador, Union of Concerned Scientists

# SANTA FE COUNTY

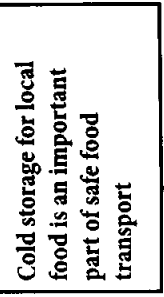
## Food & Agriculture System Map

### Legend

- ◆ Farmer's Markets
- Food Programs\*
- Senior Centers
- Food Stores
- Irrigated Land
- Cultivation Areas \*\*
- Grazing Areas \*\*
- Community Plan Areas
- ~ Rail Runner/BNSF
- ~ Major Roads
- Incorporated City Boundaries
- Santa Fe County Boundary



Irrigated Land-  
Acequia Irrigation



Cold storage for local food is an important part of safe food transport



Food programs-  
nutrition for those in need.



Seed saving ensures a future supply of local, traditional food.



Row crops growing in La Cienega are examples of 'Cultivated Areas'.



Farmers Markets growing throughout the County.

\*Food Programs include non-profits, social aid, and emergency food programs which provide free and/or discounted food for those in need.

\*\*'Cultivation and Grazing Areas' are based on 2014 Agricultural Exemptions, parcel data from the County Assessors office. The properties identified on this map have been granted an Agricultural Exempt status based on agricultural cultivation or grazing activity occurring within the property, which may be only a portion of the entire property.

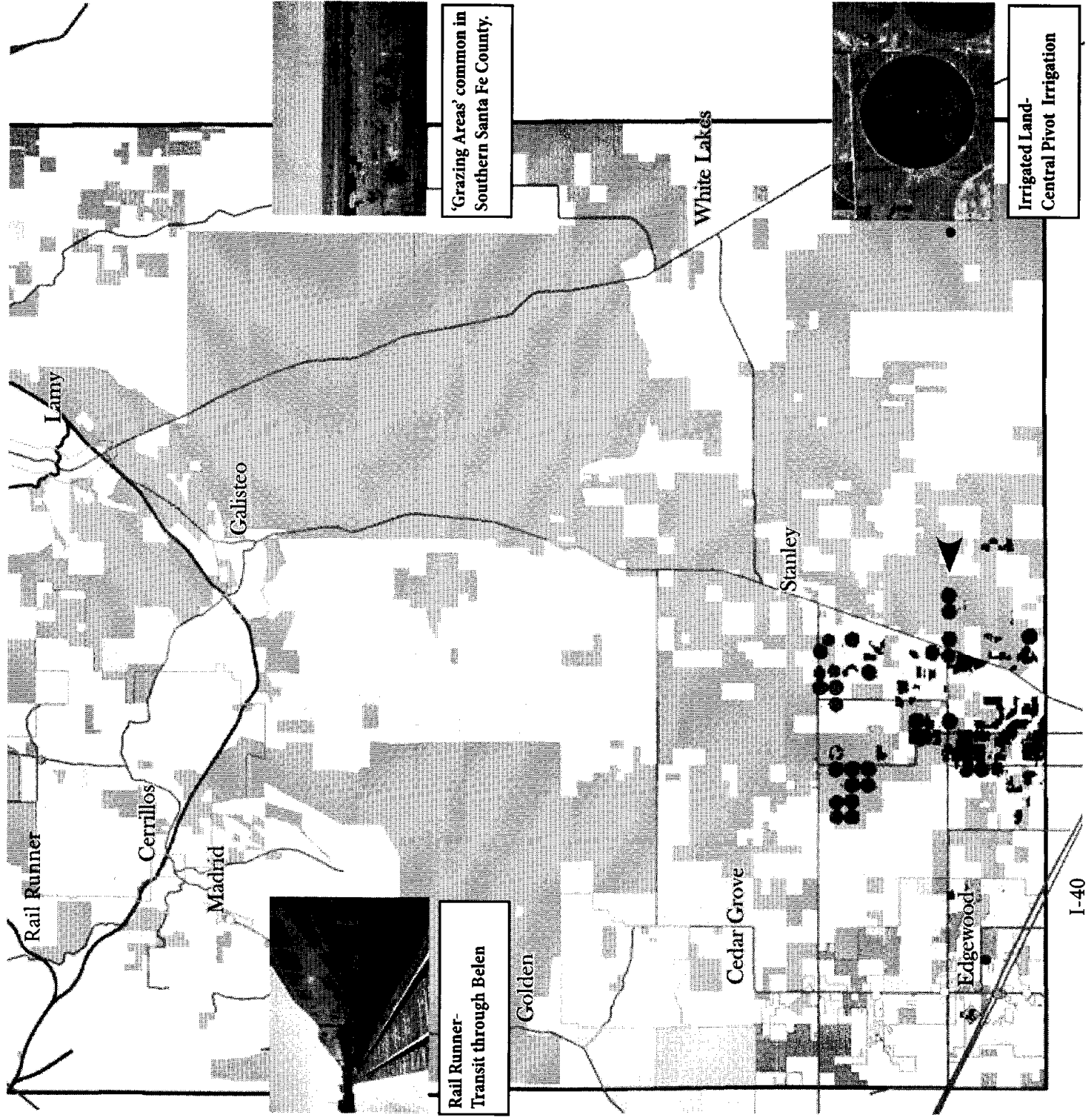
2008 Orthophotography

This information is for reference only.  
Santa Fe County assumes no liability for errors associated with the use of these data.  
User are solely responsible for confirming data accuracy.

Food access points data-2010  
Area of grazing/ cultivation data-2014  
Irrigated land data-2010



October 1, 2014





# GETTING FOOD

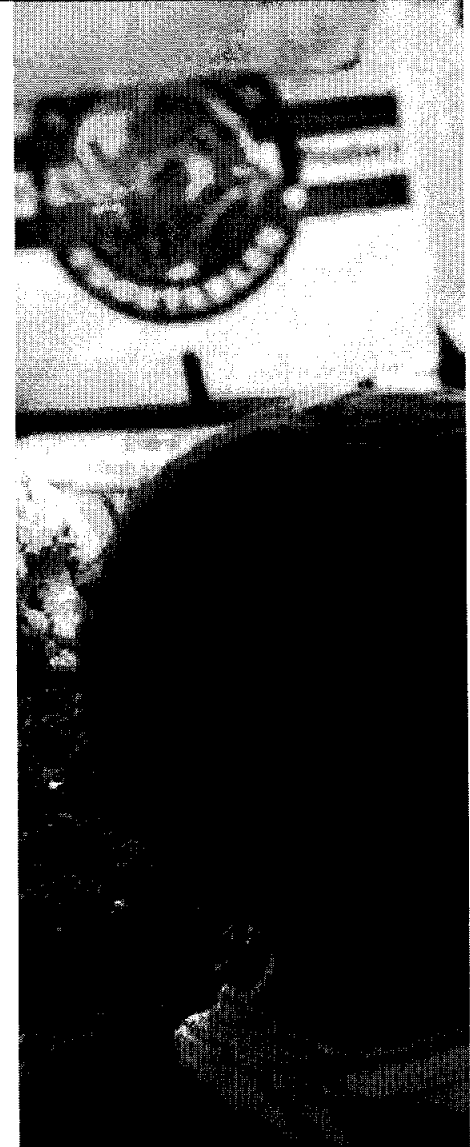
Our vision for connecting diverse communities throughout the Santa Fe region to a reliable supply of healthy and affordable foods is rooted in building knowledge of available assistance programs and resources, as well as ensuring that these foods are readily available in local stores, farmers markets, senior centers, hospitals, and schools.

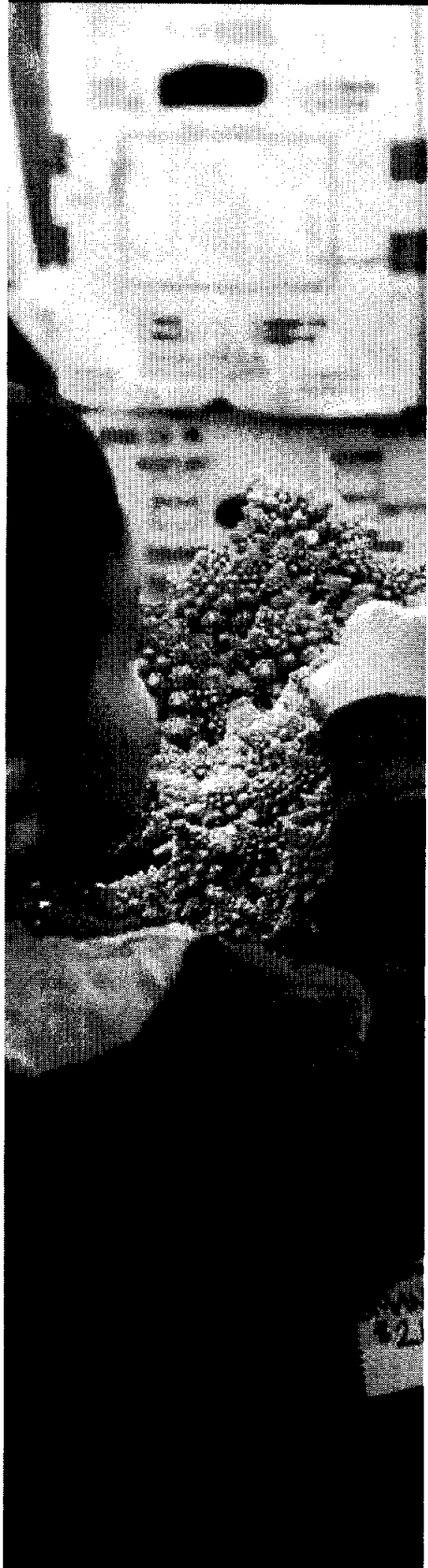
## **Goal 1: Improve residents' ability to access fresh, nutritious food.**

- ✎ **Require public transportation routes to be aligned with food outlets that offer a full range of whole and fresh food options.**  
*Potential Partners: Santa Fe Trails, North Central Regional Transit*
- ✎ **Require City- and County-operated institutions include an increasing amount and variety of local food in their meal service programs to a maximum feasible percentage.**  
*Potential Partners: Santa Fe County Community Services Department, City of Santa Fe Community Services, Area Agency on Aging, Santa Fe Public Schools, PED, CYFD*
- ✎ **Support provision of infrastructure and programming to improve food access in rural and under-served areas.**  
*(Santa Fe County Sustainable Growth Management Plan, 2010, strategy 15.4.1, page 86.)*  
*Potential Partners: Santa Fe County Growth Management Department*
- ✎ **Increase seniors' awareness of various food assistance programs.**  
*Potential Partners: Santa Fe County Community Services Department, New Mexico Income Support Division (ISD) Santa Fe County Office, non-profits, City and County Senior Centers administration and staff*

## **Goal 2: Promote self-reliance, family gardening, and food storage.**

- ✎ **Conduct education and outreach campaigns which emphasize self-reliance as a cornerstone of sustainability.**  
*Potential Partners: Sustainable Santa Fe Commission, City of Santa Fe Environmental Services, Santa Fe City Council, Santa Fe Board of County Commissioners*
- ✎ **Inspire our community to integrate emergency preparedness into our daily lives through various lifestyle shifts, from smart shopping techniques for storing food reserves to revitalizing food preservation and storage traditions.**  
*Potential Partners: Santa Fe County Emergency Management, New Mexico State Extension Service, City of Santa Fe Emergency Management, non-profits*
- ✎ **Sponsor a "Grow Up Gardening" campaign which highlights creative and fun food production techniques tailored to families, including container and vertical gardening techniques for limited space.**  
*Potential Partners: Food for Santa Fe/Feeding Santa Fe, Santa Fe Farmers Market Institute, areas nurseries, and food retail outlets that offer seasonal plant starts*





### **Goal 3: Prioritize getting local, fresh food into schools.**

- ✎ Support and advocate for universal free school meals, which would make free healthy schools meals the norm for all children, regardless of family income.  
*Potential partners: NM State Legislature, NM's congressional delegation, the New Mexico Food and Agriculture Policy Council, New Mexico School Nutrition Association*
- ✎ Continue to support Farm to School educational activities currently taking place within our schools, such as on-site school gardens, food system and farming curriculum, fruit and vegetable tastings, culinary programs, field trips to local farms and venues, farmers in the classroom, and food system entrepreneurship programs.  
*Potential Partners: Santa Fe Public Schools, Santa Fe Farm to School Coordinator, Cooking With Kids, the New Mexico Food and Agriculture Policy Council, Farm to Table, school district administration and staff across Santa Fe County, area farmers, and non-profits*
- ✎ Work with School Food Service Directors and District Procurement offices to increase the availability of local foods in schools by setting up sustainable systems to purchase foods from local farmers, including standing purchase orders and bid processes that emphasize local purchasing.  
*Potential Partners: School District Procurement Offices, School Food Service Directors, Farm to Table, Cooking with Kids, the New Mexico Food and Agriculture Policy Council*

### **Goal 4: Promote existing food assistance programs.**

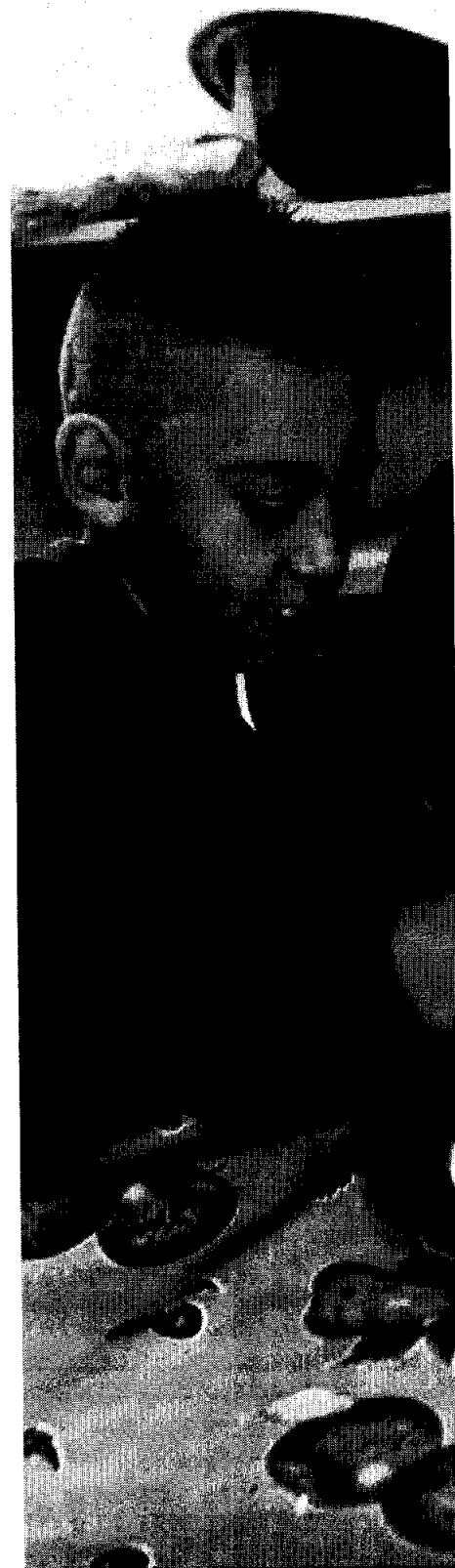
- ✎ Demonstrate and promote creative uses of Supplemental Nutrition Assistance Program (SNAP) benefits—from tips for shopping on a budget to home gardening using seeds and plant starts available for purchase with monthly assistance benefits.  
*Potential Partners: New Mexico ISD Santa Fe County Office, Santa Fe Farmers Market Institute, Local Organic Meals on a Budget, Homegrown NM*
- ✎ Promote innovative programs aimed at increasing access to fresh, local food, such as the Southside Farmers Market and Santa Fe Farmers Market Double Buck Days which provide SNAP recipients with additional funds to shop at local farmers markets. Encourage clear signage at farmers markets and outreach about the WIC and Senior Farmers Market Nutrition Programs.  
*Potential Partners: Santa Fe Farmers Market Institute, New Mexico ISD Santa Fe County Office, NM Department of Health, Kitchen Angels, non-profits*
- ✎ Organize volunteers to collect leftover crops from local farms to expand the availability of fresh food at area food banks/food pantries.  
*Potential Partners: Food for Santa Fe/Feeding Santa Fe, The Food Depot, area farms, non-profits*

**“No one in Santa Fe should go hungry”**

**- Carmichael Dominguez , Santa Fe City Council, District 3**

## **Goal 5: Celebrate local food and support regional food economy.**

- ✎ **Grow the demand for local food by organizing an outreach campaign aimed at educating and inspiring residents to buy local.**  
*Potential Partners: Santa Fe County Planning Division-Economic Development, Santa Fe Food Policy Council, Santa Fe Farmers Market Institute, New Mexico Farmers Marketing Association, NMDA-Taste the Tradition and Grow with Tradition, area food retail, non-profits, community members, farmers*
- ✎ **Develop a locally based approach to address concerns of consumers and producers about the potential impacts of Genetically Modified Organism (GMO) food consumption and production in the region.**  
*Potential Partners: Joint City-County GMO Task Force, Homegrown NM, Santa Fe County Extension, non-profits and initiatives*
- ✎ **Implement innovative strategies that support local economic development efforts such as mobile grocery stores and food carts to bring locally produced food into under-served areas of the county.**  
*Potential Partners: City of Santa Fe Economic Development, Santa Fe County Economic Development, North Central New Mexico Economic Development District, MoGro Mobile Grocery*
- ✎ **Work with Santa Fe City and County to develop urban agriculture ordinances.**  
*Potential Partners: Santa Fe County Extension, Santa Fe Food Policy Council—Land Use subcommittee, Gaia Gardens, Homegrown NM, non-profits*
- ✎ **Maximize the efficiency of existing Community Commercial Kitchens and assess the need for additional facilities in order to enhance the economic potential of local value-added products and traditional foods**  
*Potential Partners: City of Santa Fe Economic Development, Santa Fe County Economic Development, Santa Fe SCORE, Southside Merchants Association, Santa Fe Business Incubator, Pojoaque Pueblo, non-profits, community members*
- ✎ **Work with New Mexico regulatory agencies to streamline the process by which local producers and food processors can become certified for value added products.**  
*Potential Partners: City of Santa Fe Economic Development, Santa Fe County Economic Development and Planning Division, New Mexico Environment Department, New Mexico Food and Agriculture Policy Council, Farm to Table*
- ✎ **Develop City and County Start-Up Resource Guides to help new entrepreneurs meet the requirements for starting food retail or agricultural businesses.**  
*Potential Partners: City of Santa Fe Economic Development, Santa Fe County Economic Development, Santa Fe Chamber of Commerce, Santa Fe Green Chamber of Commerce, Santa Fe Hispanic Chamber of Commerce*



**“We don’t just want to do more and more, we want to do more and better”**

**- Viola Lujan , Food Depot, Program Manager**

# LEARNING ABOUT FOOD

Our vision for food education is to equip residents with the knowledge, skills, passion and environment to make healthy choices for themselves, their families, and the community.

## **Goal 1: Expand opportunities for creative and experiential learning through cooking and nutrition**

- ✎ **Align Farm to School curriculum with required district and testing standards to ensure that lessons are beneficial to students' learning processes and are reinforced across subjects.**  
*Potential Partners: Santa Fe Public Schools, Santa Fe Farm to School Coordinator, Cooking With Kids, school district administration and staff across Santa Fe County*
- ✎ **Collaborate with area non-profits and agencies to conduct educational trainings that will clarify food safety requirements for using fruits and vegetables grown in our community, senior center, and school gardens in our local institutions.**  
*Potential Partners: New Mexico Environment Department, National Farm to School Network, Farm to Table, New Mexico State Extension Service, and the New Mexico Department of Agriculture (NMDA)*
- ✎ **Develop education classes for parents and children that connect Farm to School activities with at-home cooking practices to help youth create lasting lifestyle shifts for themselves and their families.**  
*Potential Partners: National Farm to School Network, Local Organic Meals on a Budget, Cooking With Kids, Santa Fe Community College Culinary Arts program, school administration and staff, Americorps, Food Corps, and non-profits*
- ✎ **Encourage area non-profits to develop nutrition education and cooking programs tailored to the needs of tribal communities such as shopping on a budget, meeting special dietary needs, and learning creative ways to utilize commodity foods.**  
*Potential Partners: Indian Health Services, Eight Northern Indian Pueblos Council (ENIPC) Commodity Foods Distribution Program, Tewa Women United, Cooking with Kids, Local Organic Meals on a Budget, Santa Fe Community College Culinary Arts program and other non-profits*
- ✎ **Develop nutrition/healthy cooking classes and educational materials, with an emphasis on reaching people at higher risk for food insecurity and diet-related health concerns.**  
*Potential Partners: Santa Fe Community College, Cooking With Kids, Kitchen Angels, Food Depot, area culinary schools, La Familia Medical Center, Adelante, Youth Shelters and Family Services, and other non-profits*



- ✎ Work with local non-profits to develop culinary programs aimed at seniors that promote increased knowledge about cooking techniques, diversity of dishes and nutrition information.

*Potential Partners: Santa Fe County Community Services, City of Santa Fe Community Services, City and County Senior Center staff, Cooking with Kids, Local Organic Meals on a Budget and other non-profits*

- ✎ Work with area governmental departments, agencies, and organizations to develop prevention and management programs for diet related conditions to help transition folks' diets to meet medical needs in a way that is achievable and culturally appropriate.

*Potential Partners: Santa Fe County Community Services, City of Santa Fe Community Services and Wellness Coordinator, Christus St. Vincent Regional Medical Center, La Familia Medical Center and other medical clinics, Pueblo of Pojoaque Wellness and Healing Arts Center, Tewa Women United, the Flowering Tree Permaculture Institute: Pre-Contact Diet Project--Pueblo Food Experience, Kitchen Angels and other non-profits*

## **Goal 2: Promote the development of healthy and safe built environments.**

- ✎ Work with City and County Land Use to develop Complete Streets Resolutions aimed at making our neighborhoods more attractive, accessible, and safe. Complete Streets is a national program that attempts to promote physical activity by making streets safe and functional for all drivers, pedestrians, and bicycles.

*Potential Partners: Santa Fe City Council, Santa Fe County Board of County Commissioners, City of Santa Fe Land Use, Santa Fe County Growth Management and Land Use, neighborhood associations*

- ✎ Establish "healthy food zones" near schools and public institutions to promote the availability of nutritious food and limit the marketing and availability of unhealthy foods.

*Potential Partners: Santa Fe City Council, Santa Fe County Board of County Commissioners, City of Santa Fe Land Use, Santa Fe County Growth Management and Land Use*

- ✎ Increase opportunities for school-based events which emphasize fun physical activities for youth such as walking school buses (an alternate form of student transport: students are chaperoned by two adults while walking to school), the Bike Rodeo, and Girls on the Run

*Potential Partners: School District administration and staff, La Familia Medical Center, REACH Community Leadership Team (CLT), non-profit organizations*





### **Goal 3: Expand and diversify opportunities to access food assistance.**

- ✎ Reinforce nutrition education and access by providing enrollment services, information, and vouchers for fresh, whole foods at area health care and senior centers  
*Potential Partners: La Familia Medical Center, REACH Community Leadership Team (CLT), New Mexico Income Support Division (ISD) Santa Fe County Office, New Mexico Farmers Marketing Association, City and County Senior Centers administration and staff, Santa Fe County Community Services, City of Santa Fe Community Services, non-profits*
- ✎ Expand food assistance programs to meet specialized dietary needs and cultural preferences and to offer availability during the times and days many folks can most conveniently utilize their services, such as evenings and weekends.  
*Potential Partners: New Mexico ISD Santa Fe County Office, non-profits, food banks/pantries, and shelters*
- ✎ Collaborate with area tribal governments, agencies, and organizations to ensure their communities have equal access to information and enrollment services for a variety of different assistance programs available to residents of Santa Fe County.  
*Potential Partners: Eight Northern Indian Pueblos Council (ENIPC) Commodity Foods Distribution Program, New Mexico ISD Santa Fe County Office, non-profits*

### **Goal 4: Align and publicize wellness policies throughout the Santa Fe region.**

- ✎ Support Implementation of school wellness policies that align with federal requirements with achievable goals that are culturally appropriate for the students, families, and staff they serve.  
*Potential Partners: School District administration, School Health Advisory Council (SHAC) nurses, and staff*
- ✎ Support wellness policies for Santa Fe City and County employees and their families, which offer incentives, and innovative solutions to maintaining good nutrition and active lifestyles; institute a "Farm to Work" CSA program that brings local produce to the workplace.  
*Potential Partners: City of Santa Fe Wellness Coordinator, Santa Fe City Council, Santa Fe County Human Resources, Santa Fe Board of County Commissioners, Santa Fe Farmers Market Institute.*
- ✎ Encourage private sector wellness initiatives, incentive programs and policies that contribute to the well-being of employees and their families.  
*Potential Partners: Whole Foods Market, La Montanita Co-op, other businesses*

**"We should learn to value food as we value ourselves"**

**- Lynn Walters , Cooking with Kids, Executive Director**

# GROWING FOOD

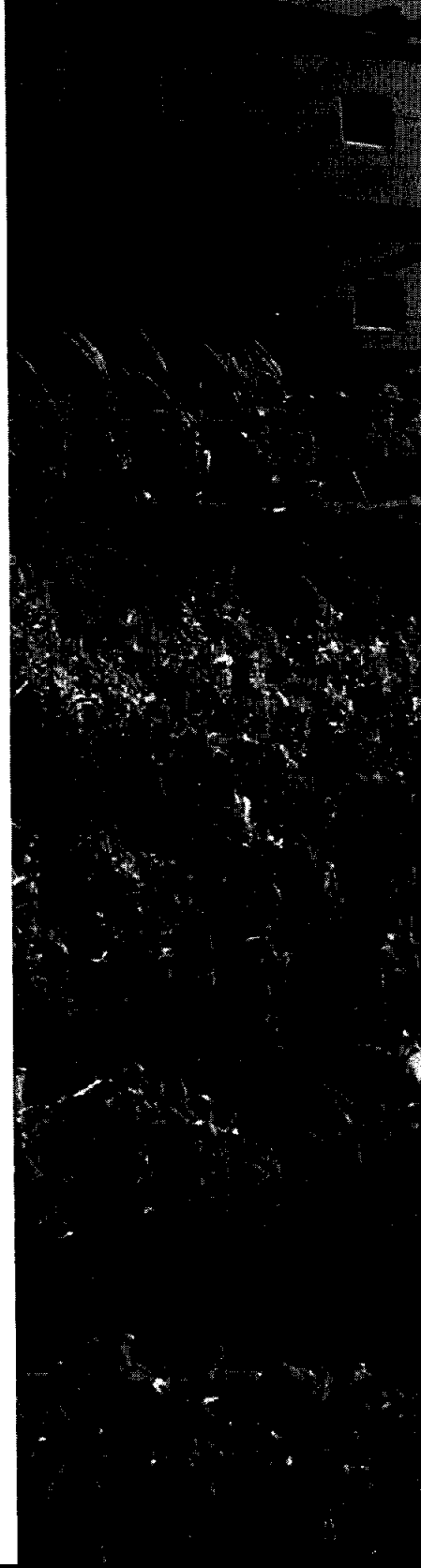
Our vision for food production in Santa Fe City and County views farming and ranching as an economically viable way of life that promotes stewardship of the land and resources. This vision supports food security through the integration of sustainable agricultural practices into the built environment.

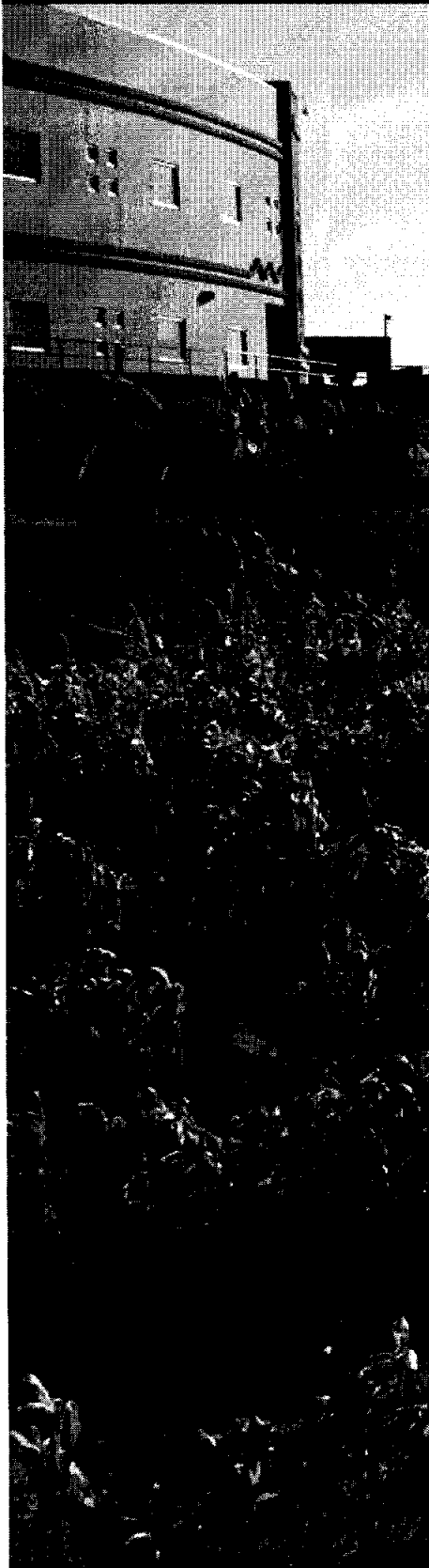
## **Goal 1: Increase the impact and efficiency of community gardens.**

- ✎ Enforce existing water conservation policies for community gardens. This will encourage appropriate growing methods that support efficient water usage and minimize negative environmental impacts.  
*Potential Partners: City of Santa Fe Parks Division, Community Garden Council, Homegrown NM, Santa Fe Watershed Association*
- ✎ Support development of community gardens that create educational opportunities with diversified crops.  
*Potential Partners: City of Santa Fe Parks Division, Community Garden Council, Homegrown NM, Santa Fe County Open Space, Santa Fe Community College, Institute of American Indian Arts*
- ✎ Define the populations intended to be served by community gardens and develop policies that ensure those populations have access and education to benefit from the increased food security of those gardens.  
*Potential Partners: City of Santa Fe Parks Division, Community Garden Council, Homegrown NM, Earth Care, Somos un Pueblo Unido*
- ✎ Support the development of community gardens and other agricultural projects by providing water, land, and infrastructure on County or public land where appropriate. (Santa Fe County Sustainable Growth Management Plan, 2010, strategy 15.5.1, page 86.)  
*Potential Partners: Santa Fe County Open Space and Trails program, Santa Fe County Growth Management Department*
- ✎ Allow the option for community gardens to be considered as part of the open space requirements for new developments. (Santa Fe County Sustainable Growth Management Plan, 2010, strategy 15.5.2, page 86.)  
*Potential Partners: Santa Fe County Open Space and Trails program, Santa Fe County Growth Management Department*

## **Goal 2: Develop on-site gardens at senior centers to increase the availability of fresh and local foods for seniors.**

- ✎ Design sustainability plans for senior center gardens to ensure they have operational support, are economically self-sufficient, and are integrated into the community.  
*Potential Partners: Santa Fe County Community Services, City of Santa Fe Community Services, City of Santa Fe Parks Division, Santa Fe County Open Space and Trails program, Homegrown NM, non-profits*





- ✎ Connect garden coordinators to resources, technical support, and educational opportunities available within Santa Fe County.

Potential Partners: Santa Fe County Community Services Department, City of Santa Fe Community Services, Santa Fe Community College, Institute of American Indian Arts (IAIA), Homegrown NM, non-profits

- ✎ Develop the plan by which fruit and vegetables grown in senior center gardens can be practically harvested, washed, stored and integrated into food preparation for senior center meals.

Potential Partners: Santa Fe County Community Services Department, New Mexico Environment Department, National Farm to School Network, Farm to Table, New Mexico State Extension Service

### **Goal 3: Increase the number of school gardens aimed at helping youth learn about food, farming, and healthy lifestyles.**

- ✎ Develop and implement plans for school gardens that address the need for continuing support from the school district and community. Encourage schools to use school gardens as outdoor classrooms, integrating learning about food into the school day, cafeteria meals, and afterschool and summer programs.

Potential Partners: National Farm to School Network, school district administration and staff, Americorps, Food Corps, non-profits

- ✎ Work with school administration and local governments to develop joint use agreements establishing community gardens on school grounds. This will increase opportunities for multi-generational and multi-cultural learning and help gardens become long-term resources that serve the entire community.

Potential Partners: City of Santa Fe Community Services, Santa Fe County Community Services, school district administration and staff, non-profits

- ✎ Develop partnerships with the Santa Fe Community College and/or other academic institutions to deliver arid-land agriculture training for residents and people pursuing careers in food production.

Potential Partners: Santa Fe Community College, Sustainable Santa Fe, Santa Fe Community Farm, IAIA

### **Goal 4: Conserve water through educational programs, incentives, and policies.**

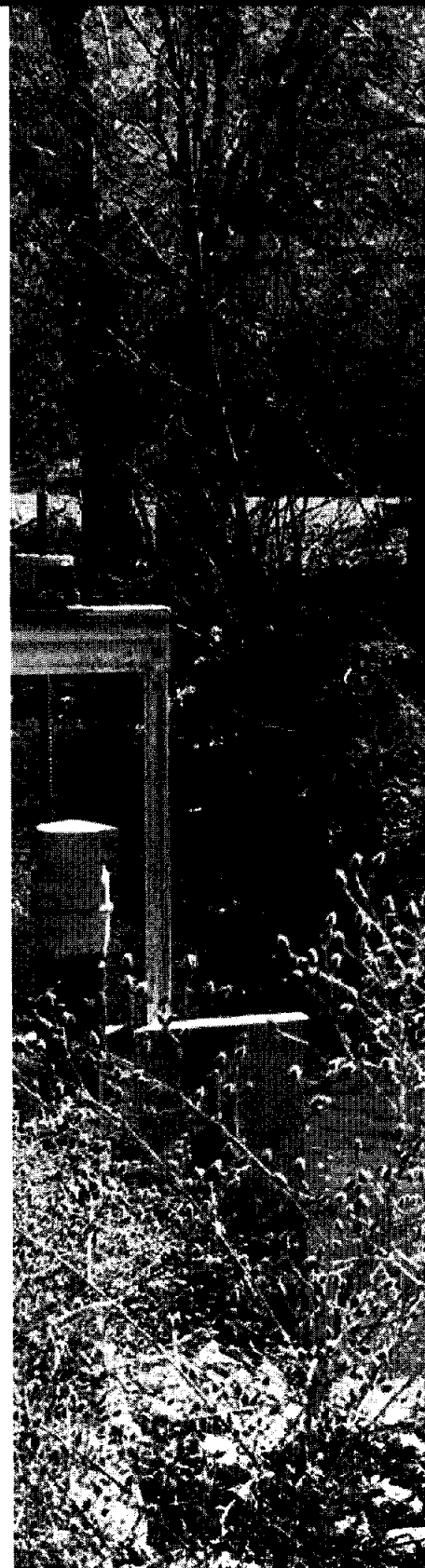
- ✎ Design educational landscapes in urban and rural settings that demonstrate the range of possibilities for water conservation, including harvested rainwater, xeric irrigation, re-vegetation and supplementing food production.

Potential Partners: City of Santa Fe Water Division, Santa Fe County Water Policy Advisory Committee, City of Santa Fe Environmental Services Department, Santa Fe Watershed Alliance, non-profits, Sustainable Santa Fe

**“The West was built on working landscapes, which are currently vulnerable to loss”**  
– Coleen Baker, Santa Fe County, Open Space Trails Program Manager



- ☛ **Require that urban farms that grow produce for sale or to donate to organizations that address food insecurity must provide a water use plan including a water budget for plantings and water sources which minimize the use of municipal drinking water for crop irrigation.**  
*Potential Partners: City of Santa Fe Water Division, Santa Fe County Water Policy Advisory Committee, City of Santa Fe Environmental Services Department, Santa Fe Watershed Alliance, non-profits, Sustainable Santa Fe*
- ☛ **Support rebates and other incentives for agricultural use such as rain barrels, drip-irrigation, composting systems, and water conservation techniques in areas where appropriate.(Santa Fe County Sustainable Growth Management Plan, 2010, strategy 16.2.1, p. 87.)**  
*Potential Partners: City of Santa Fe Water Division, Santa Fe County Water Policy Advisory Committee, City of Santa Fe Environmental Services Department, Santa Fe Watershed Alliance, non-profits, Sustainable Santa Fe*
- ☛ **Support the use of rain fed agriculture where collected water is used to irrigate crops. (Santa Fe County Sustainable Growth Management Plan, 2010, strategy 16.2.2, p. 87.)**  
*Potential Partners: Santa Fe County Growth Management Department, City of Santa Fe Water Division, Santa Fe County Water Policy Advisory Committee, City of Santa Fe Environmental Services Department, Santa Fe Watershed Alliance, non-profits, Sustainable Santa Fe*
- ☛ **Support farming techniques that facilitate the conversion from spray irrigation-based practices to lower water use systems such as no-till, drip irrigation, and/or greenhouse based agriculture. (Santa Fe County Sustainable Growth Management Plan, 2010, strategy 16.2.3, p. 87.)**  
*Potential Partners: Santa Fe County Growth Management Department, Santa Fe Watershed Association, New Mexico Acequia Association, Natural Resource Conservation Service (NRCS), New Mexico State Extension Service*
- ☛ **Create educational programs that highlight our watershed, related policies, and water conservation tips.**  
*Potential Partners: City of Santa Fe Water Division, Santa Fe County Water Policy Advisory Committee, City of Santa Fe Environmental Services Department, Santa Fe Watershed Association, New Mexico Acequia Association, non-profits*
- ☛ **Develop and publicize incentive programs to reduce in-home water use by utilizing gray water and rainwater for irrigation and other purposes that do not require potable water.**  
*Potential Partners: City of Santa Fe Water Division, Santa Fe County Water Policy Advisory Committee, City of Santa Fe Environmental Services Department, Santa Fe Watershed Alliance, non-profits*



**“Self-reliance is a cornerstone of sustainability”**

– Martin Vigil, Santa Fe County, Emergency Management Director



### **Goal 5: Increase the viability and presence of local gardens, farms and ranches.**

- ✎ **Work with Santa Fe County to incorporate land use allowances for agricultural activity into the Sustainable Land Development Code.**  
*Potential Partners: Santa Fe County Growth Management Department, Santa Fe County Board of County Commissioners, Water and Soil Conservation Districts, local farmers, non-profits*
- ✎ **Create a LandLink program which connects landowners in Northern New Mexico with farmers who need land; Also provides opportunity to connect new farmers with experienced mentors.**  
*Potential Partners: Santa Fe Food Policy Council-Land Use Subcommittee, Santa Fe County Growth Management Department, North Central New Mexico Economic Development District*
- ✎ **Collaborate with area agencies and organizations to help small and medium scale farms meet market-based and Federal food safety requirements.**  
*Potential partners: New Mexico State Extension Service, New Mexico Department of Agriculture, Farm to Table*
- ✎ **Design and implement a City Harvest program, (as detailed in the Sustainable Santa Fe Plan), to create multiple growing, processing, storing and selling opportunities. (Sustainable Santa Fe Plan, 2008, Proposed Action 10-2 under Food Production, page 29-30.)**  
*Potential Partners: Santa Fe County Growth Management Department, City of Santa Fe Water Division, Santa Fe County Water Policy Advisory Committee, City of Santa Fe Environmental Services Department, Santa Fe Watershed Alliance, non-profits, Sustainable Santa Fe*
- ✎ **Develop a Commercial Scale Urban Agricultural Permit to protect both neighborhood and agricultural interests within the City by setting policies for uses including, but not limited to water conservation, embedded greenhouse gas footprint, traffic, sales, employees, volunteers, visitors and community educational benefits.**  
*Potential Partners: City of Santa Fe Land Use and Zoning Department, Santa Fe City Council, neighborhood associations, non-profits, farmers, and community members*
- ✎ **Work with the City and County to develop zoning and land use polices which clearly detail home-based agricultural activities such as raising chickens, small livestock, and honey bees.**  
*Potential Partners: City of Santa Fe Land Use and Zoning Department, Santa Fe City Council, Santa Fe County Growth Management and Land Use Department, neighborhood associations, non-profits, farmers, and community members*
- ✎ **Encourage public and private land owners within the City to revitalize vacant and underutilized property by allowing land to be used for green space and gardening.**  
*Potential Partners: City of Santa Fe Land Use and Zoning Department, Santa Fe City Council, and community members*

**Goal 6: Develop agricultural incentives and innovative programs to support small farmers and maximize food production/distribution in our regional foodshed.**

- **Promote and expand outreach and incentives for extended season farming techniques, supporting farmers to generate more income.**  
*Potential Partners: New Mexico State Extension Service, Natural Resource Conservation Service, Santa Fe Farmers Market Institute*
- **Assess and develop resource tools such as conservation easements, improvement districts, and grants to support the viability of agricultural uses. (Santa Fe County Sustainable Growth Management Plan, 2010, strategy 14.2.2, page 85.)**  
*Potential Partners: Santa Fe County Planning Division, Santa Fe Growth Management Department, Santa Fe Board of County Commissioners, New Mexico Land Conservancy*
- **Coordinate with local communities and organizations to promote the development of agricultural products and markets, including the development of farmers markets, buy-local campaigns, and a local products website to market and distribute fresh goods. (Santa Fe County Sustainable Growth Management Plan, 2010, strategy 14.2.3, page 85.)**  
*Potential Partners: Santa Fe County Growth Management Department, Santa Fe Food Policy Council, Santa Fe Farmers Market Institute, New Mexico Farmers Marketing Association, NMDA-Taste the Tradition and Grow with Tradition*
- **Establish Specialty Crop programs which support local farm and food based businesses by creating subsidies for fruits and vegetables.**  
*Potential Partners: City of Santa Fe Economic Development, Santa Fe County Economic Development, New Mexico Department of Agriculture*
- **Clarify and communicate the process by which landowners can apply for Agricultural Exemptions; Conduct a "Did You Know" campaign to make the public aware of qualifications for this classification, and to facilitate the application process.**  
*Potential Partners: Santa Fe County Growth Management, Office of the Santa Fe County Assessor, Santa Fe Food Policy Council--Land Use Subcommittee*
- **Maximize the efficient use of existing infrastructure in our regional foodshed. For example, the Rail Runner is a public transit spine which could be used to transport growers and their produce, expanding markets and food access points from Belen to Santa Fe**  
*Potential Partners: Santa Fe County Growth Management, Rio Metro Board, Mid Region Council of Governments (MRCOG), University of New Mexico*



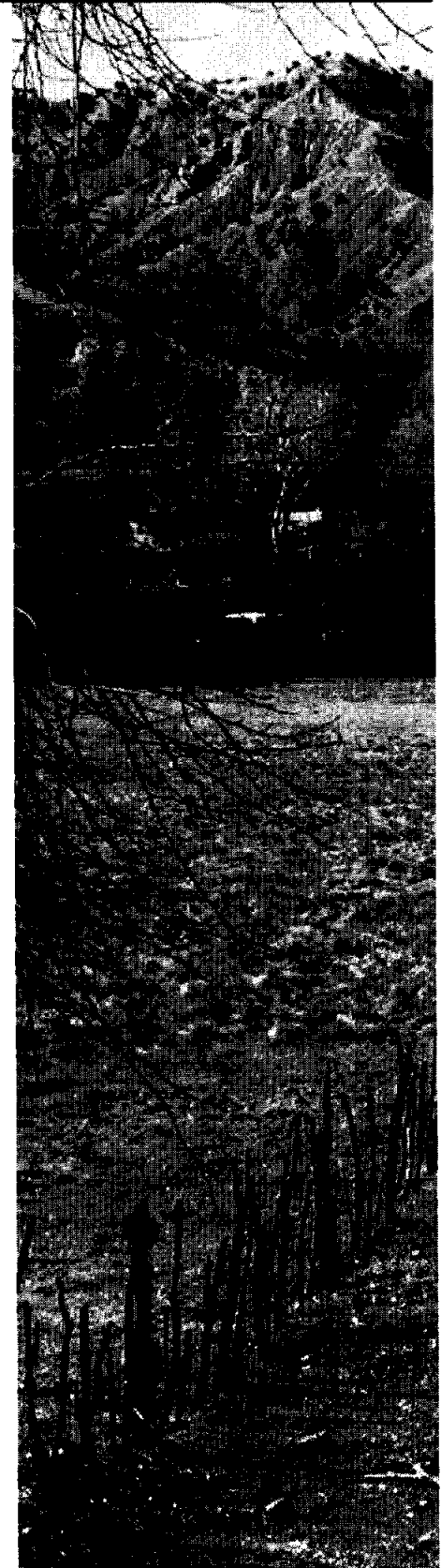


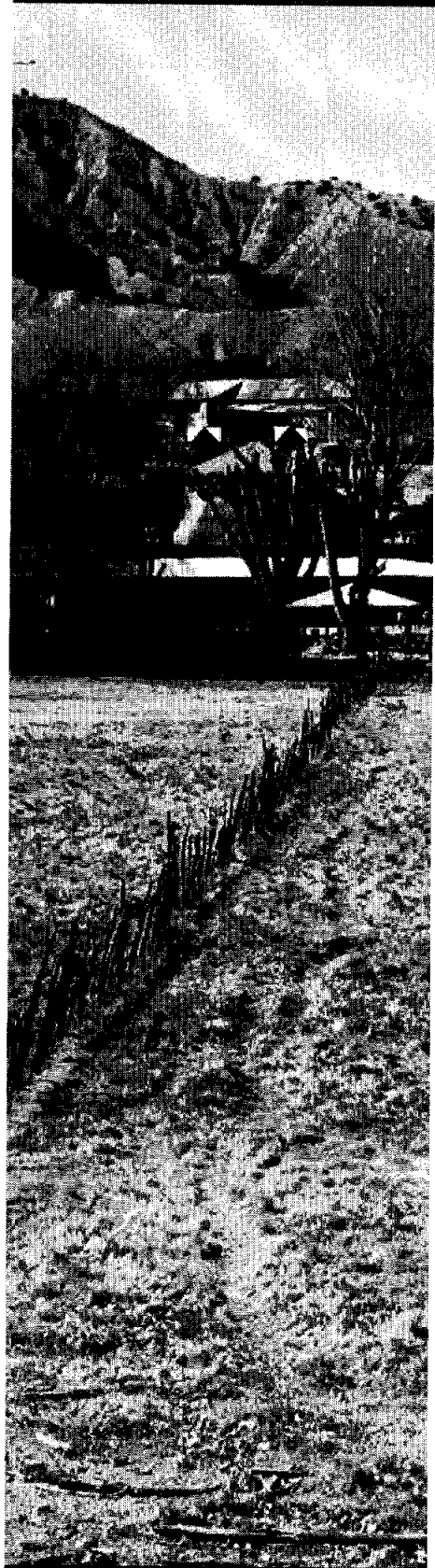
### **Goal 7: Adopt sustainable land/resource management practices at a regional scale.**

- ✎ **Encourage City planning initiatives such as urban forestry, green belts, and edible infrastructure to create continuous green space which can provide habitat for animals, food, shade, and places to play.**  
*Potential Partners: City of Santa Fe Parks Division, City of Santa Fe Roadway and Trails Department, Southwest Area Planning Initiative*
- ✎ **Develop a list-serv for urban food harvesting opportunities to connect individuals to existing food production sites, allowing them to collect crops that would otherwise go to waste.**  
*Potential Partners: City of Santa Fe, Santa Fe County Growth Management Department, Gaia Gardens, non-profits, community members*
- ✎ **Support the development of community elected “GMO Free Zones” to create buffer zones that protect farmland, crops, and seeds from the unknown impacts of genetically engineered organisms.**  
*Potential Partners: Santa Fe County Growth Management, New Mexico State Extension Service, area Tribal Governments, non-profits*
- ✎ **Promote educational opportunities in community gardens and public spaces that highlight native, low water plants and traditional uses.**  
*Potential Partners: Homegrown New Mexico, Tesuque Agriculture Department, City of Santa Fe Parks Division, Santa Fe County Open Space and Trails Division, Southwest Area Planning Initiative*
- ✎ **Develop incentives, policies and programs throughout the City and County designed to support farming and ranching activities and improve environmental resiliency: develop a composting program, build soil to increase land fertility and groundwater recharge, improve functionality of waterways and irrigation networks, and promote growth of plants that are resilient in a wider range of climate conditions and provide habitat for beneficial insects.**  
*Potential Partners: City of Santa Fe Parks Division, Santa Fe County Growth Management, New Mexico State Extension Service, area Tribal Governments, USDA, Santa Fe Watershed Association, Quivira Coalition, other non-profits*
- ✎ **Collaborate with area agencies and organizations to develop “Farmer to Farmer” outreach programs focused on innovative farming and ranching practices that build soil health.**  
*Potential partners: Santa Fe Farmers Market Institute, Quivira Coalition, Natural Resource Conservation Service, New Mexico State Extension Service, Farm to Table, other non-profits*

## **Goal 8: Prioritize sustainability and agriculture in future development in Santa Fe City and County.**

- ✎ **Develop an Implementation Plan for the Agriculture and Ranching Element, Chapter 4 of the 2010 Sustainable Growth Management Plan.**  
*Potential Partners: Santa Fe Food Policy Council, Santa Fe County Growth Management, Santa Fe County Board of County Commissioners, Santa Fe Food Policy Council*
- ✎ **Establish City and County development approval requirements to incorporate water-efficient edible landscapes, food production and composting areas for the future residents into their master plans.**  
*Potential Partners: City of Santa Fe Department of Housing and Community Development, Santa Fe County Building and Development Services, Santa Fe County Growth Management and Land Use, area developers*
- ✎ **Establish City and County development approval requirements with standards and regulations that do not limit home-based agricultural activities otherwise allowed by land use approval authority.**  
*Potential Partners: City of Santa Fe Department of Housing and Community Development, Santa Fe County Growth Management and Land Use, Homegrown NM, area developers*
- ✎ **Revise the City of Santa Fe's Development Code landscape requirements to allow and/or require a percentage of plants produce fruits or vegetables that have low to moderate water requirements.**  
*Potential partners: City of Santa Fe Parks Division, Sangre de Cristo Water Division, Santa Fe Watershed Association*
- ✎ **Assess and develop a county-wide composting program that considers food waste, green waste, and manure. (Santa Fe County Sustainable Growth Management Plan, 2010, strategy 15.3.3, page 86.)**  
*Potential Partners: City of Santa Fe Environmental Services Division, Santa Fe County Growth Management, New Mexico State Extension Service, area Tribal Governments, USDA, Santa Fe Watershed Association, Quivira Coalition, other non-profits*
- ✎ **Complete an Agricultural Overlay Zone to protect agricultural land and resources and create bonus and incentive zoning techniques.**  
*Potential Partners: Santa Fe County Growth Management Department, Santa Fe Food Policy Council--Land Use subcommittee*





- Provide regulatory framework to accommodate sustainable historic development patterns and strengthen community planning efforts to ensure that traditional communities are supported in planning for their futures.

Potential Partners: Santa Fe County Growth Management

- Develop an agriculture preservation policy that is directed toward maintaining small agricultural parcels, including “working land” (such as barns, greenhouses, and other structures) as part of the developable land. (Santa Fe County Sustainable Growth Management Plan, 2010, strategy 14.1.3, page 85.)

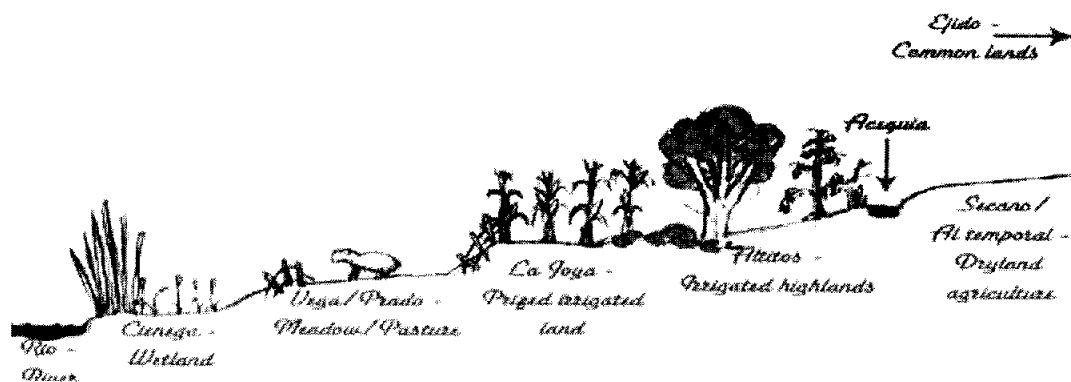
Potential Partners: Santa Fe County Planning Division, Santa Fe County Growth Management Department, Santa Fe Food Policy Council--Land Use Subcommittee, Santa Fe Board of County Commissioners, non-profits

- Create an inventory of agricultural lands and conduct a land suitability analysis to identify agricultural potential and determine high priority of protection for agricultural soils and other sensitive arable lands, especially historical agricultural lands with water rights. (Santa Fe County Sustainable Growth Management Plan, 2010, strategy 14.1.5, page 85.)

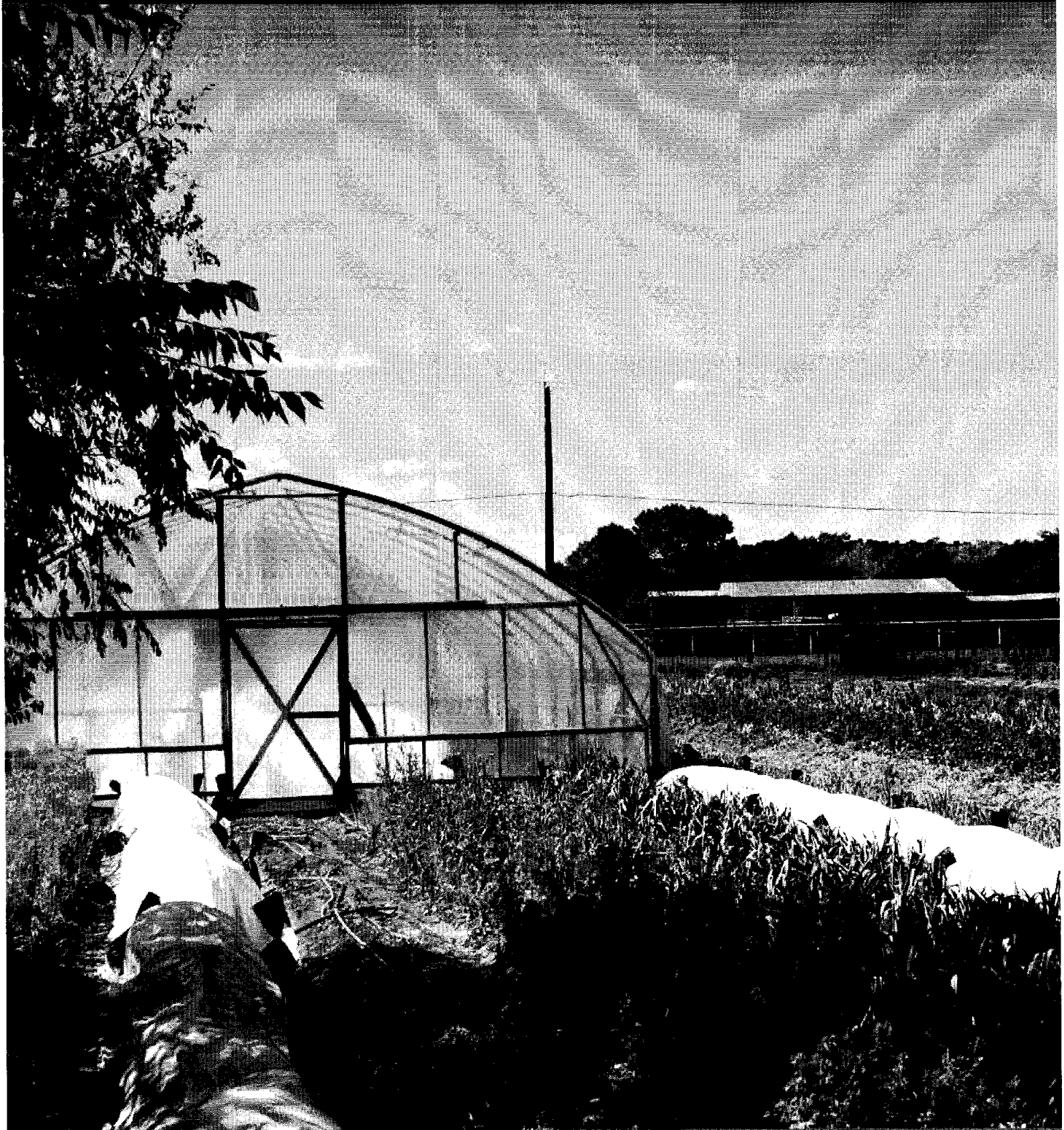
Potential Partners: Santa Fe County Growth Management Department, Santa Fe Food Policy Council--Land Use Subcommittee, Santa Fe Board of County Commissioners, New Mexico Acequia Association, non-profits

- Require clustering of new development on acequia-irrigated agricultural land. (Santa Fe County Sustainable Growth Management Plan, 2010, strategy 16.3.5, page 87.)

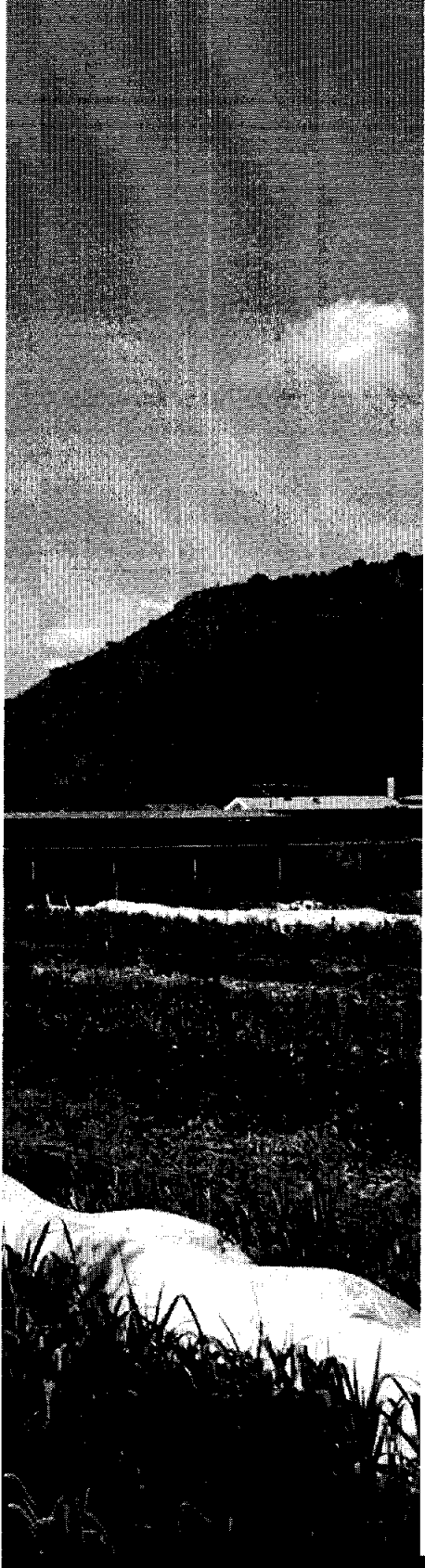
Potential Partners: Santa Fe County Growth Management Department, Santa Fe Food Policy Council, Santa Fe Board of County Commissioners, non-profits



**Acequia landscape cross-section.** Traditional communities are characterized by historic acequia irrigated farmlands which are important to the culture, heritage, community and natural environment. When developing in and around acequia landscapes, it is essential to understand, prioritize, and maintain the natural and agricultural systems' integrity. (Santa Fe County Sustainable Growth Management Plan, 2010, page 76.)



# Thank You & Acknowledgments



The Santa Fe Food Policy Council would like to thank the Santa Fe City Council and Board of County Commissioners. Above all, we would like to thank the community of Santa Fe for inspiring the vision for our local food system highlighted in this plan. Ours is a vision rooted in respect for the diverse history and deep connection to the land. It is one which celebrates our passion for local foods, honors our farming community, and embraces innovation as a path to ensuring food security for future generations.

## **SANTA FE CITY AND COUNTY ADVISORY COUNCIL ON FOOD POLICY CURRENT MEMBERSHIP**

**Susan J. Perry**, Chair, Wellness Coordinator, City of Santa Fe  
**Tony McCarty**, Vice- Chair, Executive Director, Kitchen Angels  
**Pamela Roy**, Executive Director, Farm to Table  
**Katherine Mortimer**, Sustainability Director, City of Santa Fe  
**Lynn Walters**, Executive Director, Cooking with Kids  
**Mark Winne**, Food Systems Author, Johns Hopkins University  
**Steve Warshawer**, Founder, Beneficial Farms  
**Emigdio Ballon**, Director of Agriculture, Tesuque Pueblo Farm  
**David Sundberg**, Executive Chef, Blue Corn Brewery  
**Cydney Martin**, Santa Fe County Extension Home Economist  
**Patricia Boies**, Health and Human Services, Santa Fe County  
**Susan Odiseos**, President, Food for Santa Fe/Feeding Santa Fe  
**Erin Lloyd Ortigoza**, Staff, Santa Fe Food Policy Council Coordinator

With much appreciation to our funders and fiscal sponsor:  
City of Santa Fe, Santa Fe County, Santa Fe Community Foundation,  
McCune Charitable Foundation, Farm to Table (fiscal sponsor).

## **CONTRIBUTING STAKEHOLDERS 2013-2014**

Santa Fe County Community Services Department, Santa Fe County Emergency Management, Santa Fe County Growth Management Department, Santa Fe County Open Space and Trails, City of Santa Fe Economic Development, City of Santa Fe Emergency Management, City Councilor Carmichael Dominguez, City of Santa Fe Environmental Services: Sustainable Santa Fe, City of Santa Fe Parks Division: Chamber of Parks Advisory Commission, City of Santa Fe Wellness Department, Farm to Table New Mexico, Cooking with Kids, Kitchen Angels, Adelante, The Food Depot, Food for Santa Fe, Bienvenidos Outreach, The Community Farm, The Street Food Institute, Santa Fe Farmers Market Institute, Santa Fe Southside Farmers Market, La Montanita Co-op and Cooperative Distribution Center, Santa Fe Community Co-op, Homegrown NM, GAIA Gardens, Santa Fe Watershed Alliance, La Familia Medical Center, Adelante, Santa Fe Public Schools, Institute for American Indian Arts, Santa Fe Community College, Area Agency on Aging, Eight Northern Pueblos Food Distribution Program on Indian Reservations (ENIPC), New Mexico Income Services Division, New Mexico Department of Health, Pueblo of Pojoaque, Pojoaque Farmers Market, Pueblo of Tesuque, Ohkay Owingeh Pueblo, the New Mexico Food and Seed Sovereignty Alliance, New Mexico Acequia Association, Edgewood Senior Center, Southside Quality of Life Initiative, New Mexico State Extension Service



# At a Glance Recommendations

## GETTING FOOD

Our vision for connecting communities in the Santa Fe region to a reliable supply of healthy and affordable foods is rooted in building knowledge of available assistance programs and resources, as well as ensuring that these foods are readily available in local stores, farmers markets, senior centers, hospitals, and schools.

*Goal 1: Improve residents' ability to access fresh, nutritious food.*

*Goal 2: Promote self-reliance, family gardening, and food storage.*

*Goal 3: Prioritize getting local, fresh food into schools.*

*Goal 4: Promote existing food assistance programs.*

*Goal 5: Celebrate local food and support regional food economy.*

## LEARNING ABOUT FOOD

Our vision for food education is to equip residents with the knowledge, skills, passion and environment to make healthy choices for themselves, their families, and the community.

*Goal 1: Expand opportunities for creative and experiential learning through cooking and nutrition.*

*Goal 2: Promote the development of healthy and safe built environments.*

*Goal 3: Expand and diversify opportunities to access food assistance.*

*Goal 4: Align and publicize wellness policies throughout the Santa Fe region.*





## **GROWING FOOD**

Our vision for food production in Santa Fe City and County views farming and ranching as an economically viable way of life that promotes stewardship of the land and resources. This vision supports food security through the integration of sustainable agricultural practices into the built environment.

**Goal 1:** *Increase the impact and efficiency of community gardens.*

**Goal 2:** *Develop on-site gardens at senior centers to increase the availability of fresh and local foods for seniors.*

**Goal 3:** *Increase the number of school gardens aimed at helping youth learn about food, farming, and healthy lifestyles.*

**Goal 4:** *Conserve water through educational programs, incentives, and policies.*

**Goal 5:** *Increase the viability and presence of local gardens, farms and ranches.*

**Goal 6:** *Develop agricultural incentives and innovative programs to support small farmers and maximize food production/distribution in our regional foodshed.*

**Goal 7:** *Adopt sustainable land/resource management practices at a regional scale.*

**Goal 8:** *Prioritize sustainability and agriculture in future development in Santa Fe City and County.*

Feeding America, Map the Meal Gap. 2011. [www.feedingamerica.org](http://www.feedingamerica.org)

United States Department of Agriculture, Census of Agriculture. 2007. <http://www.agcensus.usda.gov>

O'Donnell Economics and Strategy. Santa Fe County 2013: A Community Health Profile. May 31, 2013. <http://www.santafecountynm.gov>

Mark Winne, Michael Burgan. Doing Food Policy Councils Right: A Guide to Development and Action. September 2012. [www.markwinne.com](http://www.markwinne.com)

New Mexico Food and Agriculture Policy Council. Growing a Healthy Food System: Food and Agriculture in New Mexico. January 2005. [www.farmtotablenm.org](http://www.farmtotablenm.org)

The Santa Fe County Sustainable Growth Management Plan (SGMP), Santa Fe County General Plan, adopted by resolutions 2010-210 and 2010-225

A Community Health Profile: Santa Fe County 2013

The Santa Fe County Health Action Plan FY 2010-2017

Photo Credits: Cooking with Kids, Lynn Walters, Jennifer DeLeon, Farm to Table, Food for Santa Fe, Santa Fe County Planning Division.

*This document is printed on 100% recycled paper*

To download this document and get more information go to:

**[www.SantaFeFoodPolicy.org](http://www.SantaFeFoodPolicy.org)**

