



# Agenda

CITY CLERK'S OFFICE

DATE 2/25/14 TIME 3:20 p

SERVED BY Chris Sanchez

RECEIVED BY [Signature]

## IMMIGRATION COMMITTEE MEETING

**Tuesday, March 1, 2016  
Market Station  
Conference Room  
500 Market Station  
4:30 p.m. - 6:00 p.m.**

1. Call to Order
2. Approval of Agenda
3. Approval of Minutes: January 12, 2016
4. Community Comments
5. New Business:
  - a. Santa Fe Need and Deed
  - b. Reappointment letters
6. Old Business:
  - a. Driver's License Update
  - b. Follow-up on letter to SFPS Police Chief
  - c. Follow-up to the report to City Council about all action items for the year
7. Comments from the Chair and Committee Members
8. Report from Staff
9. Adjournment

***Persons with disabilities in need of accommodations, please contact the City Clerk's office at (505) 955-6521 five (5) working days prior to the meeting date.***

Immigration Committee  
Meeting Index  
March 1, 2016

Cover Page		0
Call to Order	The Immigration Committee was called to order at 4:38 p.m. by Vice Chair Maria Cristina Lopez.	1
Roll Call	A quorum was established by roll call.	1
Approval of the Agenda	Ms. Diaz moved to approve the agenda as presented with a second from Ms. Ugalde-Alcazar which passed by voice vote.	1
Approval of Minutes of January 21, 2016	Ms. Guerrero moved to approve the minutes of January 21, 2016 as presented with a second by Ms. Diaz which passed by voice vote.	1
Community Comments	Discussion Only	2
New Business		2
A.) Santa Fe Need and Deed	Discussion Only	3
B.) Reappointment Letters		
Old Business		
A.) Driver's License Update	Discussion Only	3
B.) Follow Up on SFPS Police Chief		3
C.) Follow Up on report to City Council about all action items for the year		4
Comments from the Chair and Commission Members	Discussion Only	4
Report from Staff	Discussion Only	4
Adjournment	There being no further business to come before the Immigration Committee, Vice Chair Lopez adjourned the meeting at 5:59 p.m.	5
Signatures		5

**Immigration Committee  
500 Market Street, Railyard Offices  
Santa Fe, NM  
March 1, 2016  
4:30 p.m. to 6:00 p.m.**

**CALL TO ORDER**

1. **The Immigration Committee was called to order at 4:38 p.m. by Vice Chair Maria Cristina Lopez. A quorum was established by roll call.**

**ROLL CALL**

**Present**

Maria Cristina Lopez, Vice Chair  
Amparo Guerrero  
Elizabeth Hemmer  
Marcela Diaz  
MariaJose Ugalde-Alcazar  
Javier Rios

**Excused**

Jewel Cabeza de Vaca  
Alejandra Seluja, Chair  
Cara Esquibel

**Others Present**

Chris Sanchez, City of Santa Fe  
Linda Vigil, Stenographer  
Sgt. Judah Montano, Santa Fe City Police  
Miguel Acosta, SFPS  
Karen Rencountre, Earthcare  
Martha Jo Hamblen, Santa Fe Need and Deed  
Israel Muterperl  
Mayela Estrada, Senior at Monte del Sol in the Mentorship program with Ms. Diaz

**2. APPROVAL OF THE AGENDA**

***Ms. Diaz moved to approve the agenda as presented with a second from Ms. Ugalde-Alcazar which passed by voice vote.***

**3. APPROVAL OF MINUTES OF JANUARY 21, 2016**

***Ms. Guerrero moved to approve the minutes of January 21, 2016 as presented with a second by Ms. Diaz which passed by voice vote.***

#### **4. COMMUNITY COMMENTS**

Ms. Rencountre who works with EarthCare Youth Allies introduced herself and her program she works with. Currently they are working on a PSA and a pamphlet. The group is interested in working with others in the communities.

Ms. Hemmer recommended that they also contact the youth groups with the Archdiocese. Archbishop Wester is very interested in immigration issues. It was decided that the Committee will invite him to a meeting in the future.

Mr. Acosta mentioned he would like to integrate the youth allies with the SFPS. He would like to meet with Ms. Rencountre to discuss.

Mr. Acosta announced he is trying to put together a Latino council. A partnership that would change policies and structure new ones. Ms. Hemmer recommended that he contact the Cathedral Youth group as well as St. Michaels.

Mr. Acosta announced the opening of a new school in the district. He passed out a flyer about the Early College Opportunities Magnet School (See Exhibit A). Mr. Acosta described the career skills that will be taught there.

Ms. Guerrero would like to see the Education Subcommittee meet with Mr. Acosta like discussed at a previous meeting.

Ms. Diaz announced that today the Santa Fe minimum wage went up to \$10.91 and the tip wage up \$3.27. Somos Un Pueblo Unido will hold a forum to discuss this matter as well as wage theft and the Driver's License matter. It will be held Thursday March 10, 2016 at Somos Un Pueblo Unido from 6:00-8:00 p.m.

#### **5. NEW BUSINESS:**

##### **A. SANTA FE NEED AND DEED**

Ms. Hamblen introduced herself and the work that Santa Fe Need and Deed does for the homeless and nearly homeless people in the community. There is a support group that meets every Monday at a church to discuss resources. All are invited, there is a hot meal provided, clothes and hygiene kits distributed. Often times there are guest speakers, she would like to invite members of the committee to attend.

Ms. Diaz invited Ms. Hamble to attend the workshop at Somos. The discussion on the Real ID could be beneficial to those who attend the support group.

A discussion was held about the resource guide (See Exhibit B) that the organization has created. It is a great tool for the people of the community. Eventually they would like to have enough copies distributed for the SF Police Department to have in their vehicles and can pass out to people they encounter who could use them.

A brief discussion was held about the age they can accept at the meetings and the criteria they must fit. If they are addicts they must be in a form of recovery to be mentored. Anyone can attend the meal and the meeting.

Ms. Hamblen stated the resource guide just got translated into Spanish and should be available soon. Ms. Ugalde Alcazar stated she has a connection at a print shop and may be able to talk to them to get more copies printed.

Ms. Hamblen discussed how the group began and gets funding. At a forum Ms. Hamblen spoke to the guest speaker about the forms of PTSD that some of the homeless community faces every day.

Mr. Acosta stated it is good for people to be aware of the issues surrounding the homeless and less fortunate. However, they also need to be aware of the voyeuristic tendency that some people may have.

The Committee thanked Ms. Hamblen for her time and presentation.

## **B. REAPPOINTMENT LETTERS**

Ms. Lopez reminded the Committee members to turn in their letters of intent as soon as possible to Mr. Sanchez.

### **6. OLD BUSINESS:**

#### **A.) DRIVER'S LICENSE UPDATE**

Ms. Diaz presented the Fact Sheet on House Bill 99 (See Exhibit C) which passed the House and Senate and is currently on the Governor's desk. The Governor has until March 9, 2016 to sign the bill.

Ms. Guerrero would like to have Ms. Diaz discuss and explain the bill at a community meeting. Ms. Diaz reminded her of the forum next week.

Ms. Diaz discussed the bill and explained it is a two tiered system and gives the immigrant community a choice. Should they choose to get the Real ID they will have to present more information. The undocumented database did not pass.

Ms. Diaz stated there would be a big education campaign to explain all of the facts. A discussion was held about the authorization cards and current ID's.

Mr. Rios announced that he will host a maestro call where people call in with their concerns on issues like the Real ID. He will share that information with Ms. Diaz.

Ms. Diaz stated the youth that works with Somos Un Pueblo Unido are working on videos of teenagers on these important issues.

The committee thanked Ms. Diaz for her hard work on this matter.

#### **B.) FOLLOW UP ON LETTER TO SFPS POLICE CHIEF**

Ms. Lopez there stated there was a response from the City Attorney. The Committee has not had a chance to review it. Mr. Sanchez will scan it and email it out to the members.

Ms. Diaz briefly glanced at the letter and stated it does not address the actual policy. Mr. Sanchez urges the committee to read the letter.

Ms. Hemmer recommends that it be put on the next agenda once the members have had a chance to review it and form opinions then a course of action can be discussed.

Mr. Sanchez stated that the Chief of Police had decided to have monthly meetings with the Chair of the Committee to discuss important issues.

Ms. Diaz asked Sgt. Montano about the procedure when a complaint that is filed, does it ever make it to the Internal Affairs department? Sgt. Montano states the Lieutenant makes that decision if it goes to Internal Affairs or if it may be taken care of by a supervisor it depends on the situation.

A discussion was held about obtaining the two policies, the Immigration Committee Policy and the Biased Based Police Policy to further discuss.

### **C.) FOLLOW UP TO THE REPORT TO CITY COUNCIL ABOUT ALL ACTION ITEMS FOR THE YEAR**

Mr. Sanchez reported that Chair Seluja is still working on this.

### **7. COMMENTS FROM THE CHAIR AND COMMITTEE MEMBERS**

Ms. Lopez reviewed her notes on the last meeting, she noted that Ms. Guerrero and the Education subcommittee would like to meet with Mr. Acosta. That will be set up in the future.

Ms. Lopez also stated that a letter needs to be sent to the City Officials about the language issue and translating important forms in Spanish. Ms. Lopez will discuss with Chair Seluja.

Mr. Sanchez again urged the committee to submit their letters of intent.

Ms. Diaz announced an article in the newspaper stated Estevan Rael Galvez is currently conducting a cultural assessment. She would like to invite him to a future committee meeting. This could be a chance for the city to have a role in activism and to share history of the Sanctuary movement.

Ms. Ugalde Alcazar asked about the Facebook page for the Committee. Mr. Sanchez state within the City webpage there can be a link. He recommends it also be placed on the next agenda as an action item. Mr. Muterperl is willing to help.

Mr. Rios attended a DACA event that was very informative and helpful. He will share the link via email.

Ms. Diaz stated the Mayor signed on to an Amicus Brief that will be heard by the Supreme Court.

### **8. REPORT FROM STAFF**

Mr. Sanchez did not have a report.

### **9. ADJOURNMENT**

***There being no further business to come before the Immigration Committee, Vice Chair Lopez adjourned the meeting at 5:59 p.m.***

**SIGNATURES**



**Alejandra Seluja, Chair**



**Linda Vigil, Stenographer**



A Santa Fe Applied Science  
Magnet School



Are you bored with school? Do you sometimes feel like a failure, but you know you could do well if you had the right support and the right way of learning and teaching? Do you like to use your hands and learn by doing projects? Would you like to learn valuable career skills while you are in high school? Would you like a free certification or degree from the Santa Fe Community College, while you're still in high school? Are you interested in Automotive, Construction, Welding, Environmental Science, Sustainable Technology, Aquaponics or Horticulture? Well, then, maybe the new ECO high school is the right place for you!

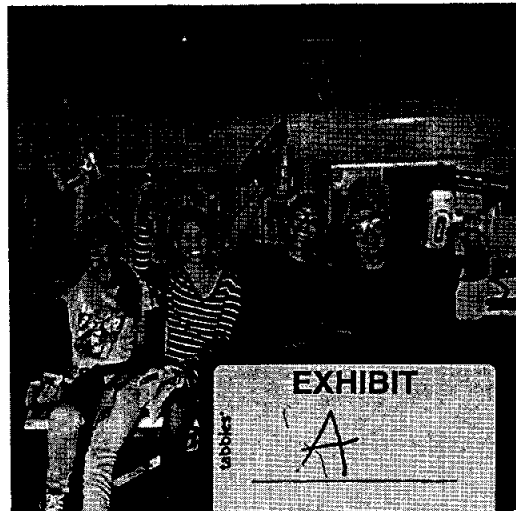
who can apply? → Any current 8th, 9th or 10th grade student living anywhere within the SFPS boundary

where is the school? → What used to be the South Campus of Santa Fe High School, off Zia Road

how do i play sports? → You can play sports for whatever school you are zoned for, even if you go to Early College Opportunities.

how do i apply? → Go to <http://www.sfps.info/index.aspx?nid=2227> and click on the Apply Here tab at the top right corner of the webpage; or go to the SFPS homepage and follow the link on the right to Early College Opportunities

Email additional questions to [Earlycollege@sfps.k12.nm.us](mailto:Earlycollege@sfps.k12.nm.us), or call Acting Principal, Dana Richards, at 505-690-5500.







¿Se aburre su hijo/a en la escuela? ¿Teme que no encuentre éxito en una preparatoria tradicional? ¿Siente que podría aprender mejor si tuviera el apoyo adecuado y una forma más apropiada para aprender? ¿Le gusta usar las manos y aprender a base de proyectos? ¿Le gustaría que aprendiera valiosas habilidades profesionales mientras está en la preparatoria? ¿Le gustaría que consiguiera una certificación profesional o un diploma del Colegio de Santa Fe, mientras termina la Preparatoria? ¿Le interesan cosas relacionadas a la construcción, soldadura, Ciencias del Medio Ambiente, Tecnología Sustentable, Aquaponics o la horticultura, autos y el comercio automotriz? Entonces debe considerar la nueva preparatoria ECO (Early College Opportunities).

¿Quién puede aplicar?

Cualquier estudiante que se encuentre actualmente en el grado 8, 9 o 10 y que viva dentro de los límites del distrito.

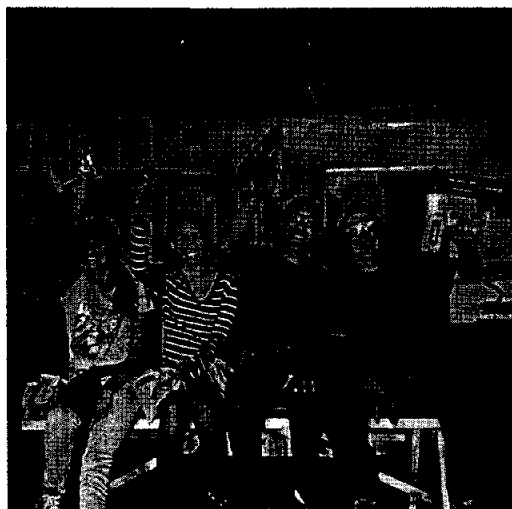
¿Dónde está la escuela?

La nueva escuela estará por la calle Zia, al lado sur de la Santa Fe High School.

¿Cómo me inscribo?

Para aplicar visitenos en <http://www.sfps.info/index.aspx?nid=2227> y haga clic en la pestaña Aplicar Aquí en la esquina superior derecha de la página web; o ir a la página de inicio SFPS y siga el enlace a la derecha para oportunidades universitarias tempranas

Todavía tiene preguntas? Por correo electrónico a [Earlycollege@sfps.k12.nm.us](mailto:Earlycollege@sfps.k12.nm.us), o llame al director, Sr. Dana Richards, al 505-690-5500. Para Español pregunte por Miguel Acosta.



# Santa Fe Resource Guide



Provided and maintained by  
Santa Fe Need and Deed.

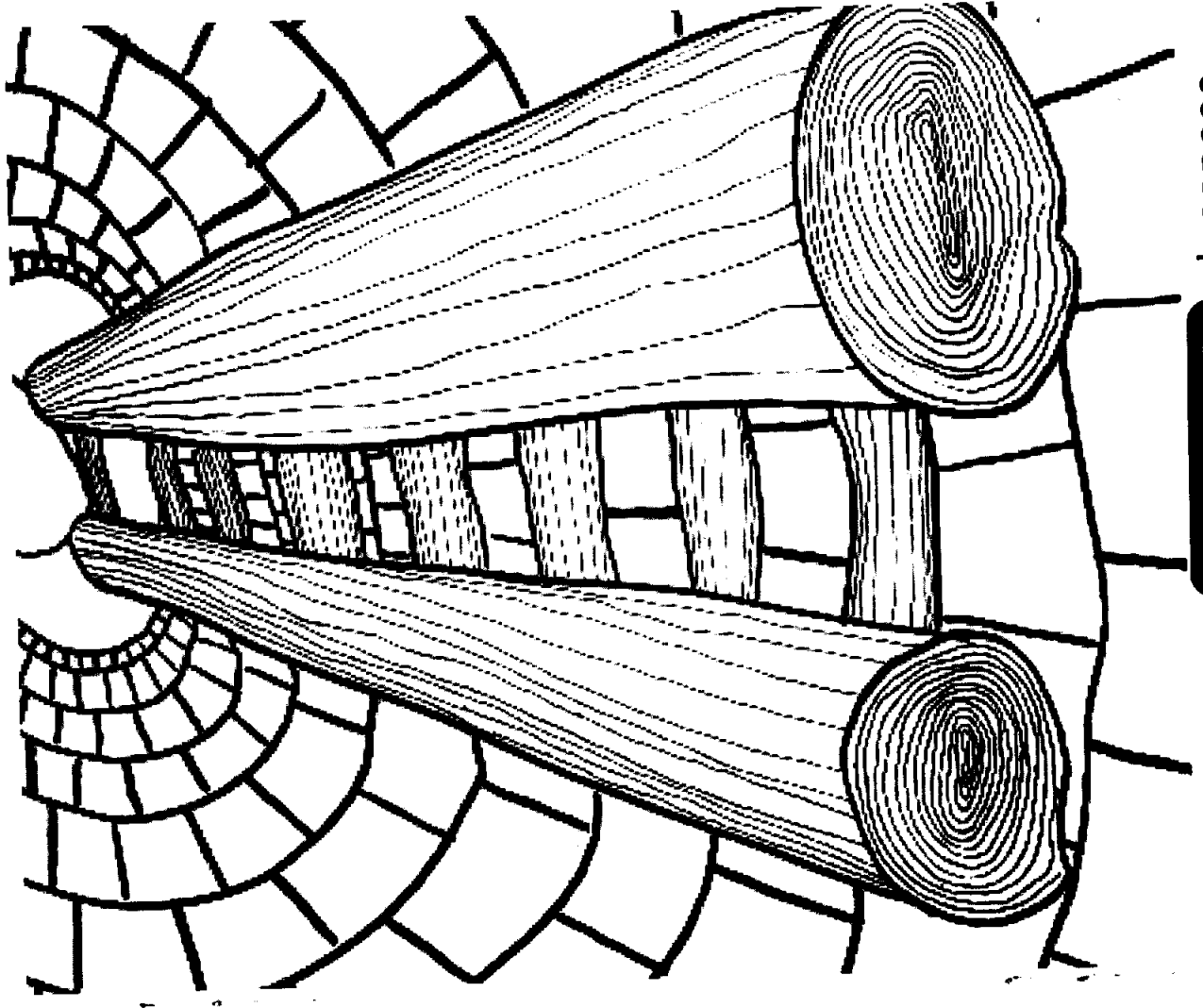
For revisions or edits, email

[Help@SantaFeNeedAndDeed.com](mailto:Help@SantaFeNeedAndDeed.com)

PO Box 23252

Santa Fe, NM 87502

[SantaFeNeedAndDeed.com](http://SantaFeNeedAndDeed.com)



For those exp  
or pre

elessness  
sed



**For additional printed PDF  
copies please go to  
SantaFeNeedAndDeed.com and  
click on the Resource Guide tab**

**ACKNOWLEDGEMENT**

*THANK YOU!*

**A portion of the cost of these Santa Fe Resource Guides were paid for by The State of New Mexico Human Services Department's Behavioral Health Services Division, The Behavioral Health Collaborative, and the Office of Peer Review and Engagement (OPRE).**

[OPRE.BHSD@state.nm.us](mailto:OPRE.BHSD@state.nm.us)

*If you would like to fund a printing of 1000  
booklets please contact*

[Help@SantaFeNeedandDeed.com](mailto:Help@SantaFeNeedandDeed.com)

-----

*We are very proud to be part of the ongoing  
mentoring of and support of our Homeless  
Community through Santa Fe Need and Deed.com  
The Printers LLC. 505.988.3456*

Cover artwork by Calvin Brett  
[calbrett@gmail.com](mailto:calbrett@gmail.com)  
A Santa Fe Need And Deed Client-Friend  
copyright 2015

## Lesson

Lyrics By Daniel Hindman

(A Santa Fe Need and Deed Friend)

Copyright 2008

**Verse 1.** She wasn't your mistake/ but maybe  
she's your lesson/ all she needed was your help/  
all she needed was your time

**Chorus.** In a box she calls her home/ all alone  
she knows her home/ is where her heart is/ it's  
where her mind is/ more water for pain that  
comes/yea/ she knows the pain will come/ it's  
not her true friend/ you could have been her  
friend/

**Verse 2.** She mixes her tears in a spoon/ fixing  
what she calls her blessings/ oblivious to what's  
ahead/ she makes her move/ you could have  
stopped her/

**Bridge.** Oblivious to what's ahead/... Her  
friend/ ...Her friend

# Santa Fe Resource Guide

**For those experiencing  
homelessness  
or precariously housed**

**Winter 2015**

# Table of Services

Please call these agencies **BEFORE** going to see them.

Emergency and Crisis Outreach.....	4
General Information.....	7
Food.....	8
Funds for Gas and Electricity.....	11
Shelters and Help with Housing.....	13
Low Cost Apartments.....	17
Medical Services .....	19
Counseling.....	23
Services for Young Children.....	28
Legal Assistance.....	30
Work and Worker's Rights.....	30
Miscellaneous.....	32
Pregnancy and Family Planning.....	35
Alcohol and Narcotics Recovery .....	36
Companion Animals.....	38
Transportation.....	38
If You Are Stopped For Questioning.....	40
"Lesson " by Daniel Hindman.....	41

## FOR OUR FRIENDS: IF YOU ARE EVER STOPPED BY POLICE, IMMIGRATION, OR FBI FOR QUESTIONING:

**Stay Calm.** Don't run. Don't argue, resist or obstruct the police, even if you are innocent or police are violating your rights. Keep your hands where police can see them.

**ASK If You Are Free To Leave.** If the officer says yes, calmly and silently walk away. If you are under arrest, you have a right to know why.

**You Have The Right To Remain Silent** and cannot be punished for refusing to answer questions. If you wish to remain silent, tell the officer out loud. In some states, you must give your name if asked to identify yourself.

**You Do Not Have To Consent To A Search of yourself or your belongings.** BUT police may "pat down" your clothing if they suspect a weapon. You should not physically resist, but you have the right to refuse consent for any further search. If you do consent, it can affect you later in court.

**Upon request, show police your identification**

Take your Social Security card and Medicaid or Medicare card to receive a 31 day bus pass for only \$10.00

↻ Rail Runner  
[www.riometro.org](http://www.riometro.org)  
1-866-795-7245  
<<>> Train between Santa Fe and Albuquerque, New Mexico

↻ Capital City Cab  
505-438-0000  
must call first for wheelchair accessibility



Provided and maintained by  
Santa Fe Need and Deed.  
For revisions or edits, email  
[Help@SantaFeNeedAndDeed.com](mailto:Help@SantaFeNeedAndDeed.com)  
For additional printed PDF  
copies please go to  
[SantaFeNeedAndDeed.com](http://SantaFeNeedAndDeed.com) and  
click on the Resource Guide tab

## **EMERGENCY & CRISIS OUTREACH**

↻ DIAL "911" FOR POLICE, FIRE OR MEDICAL EMERGENCIES

↻ NEW MEXICO CRISIS AND ACCESS LINE (NMCAL)  
1-855-662-7474

[www.nmcrisisline.com](http://www.nmcrisisline.com)

Statewide call center connected to local authorities and behavioral health agencies.

Helping New Mexicans get immediate access to local help and resources during a mental health crisis.

↻ PEER-TO-PEER WARMLINE  
1-855-466-7100

For New Mexicans looking for a listening ear. This line is staffed by a peer with "lived" experience. Live support seven days a week.

↻ CHRISTUS ST. VINCENT REGIONAL MEDICAL CENTER,  
EMERGENCY SERVICES DEPARTMENT  
505-913-3934

❖ SANTA FE COMMUNITY GUIDANCE  
CENTER CRISIS HOTLINE  
505-820-6333

❖ SANTA FE POLICE NON-EMERGENCY  
NUMBER  
505-424-3710

❖ CRISIS RESPONSE  
505-820-6333  
[www.youarenotalonenetwork.org](http://www.youarenotalonenetwork.org)

Hotline during a crisis. Operated by licensed  
therapists. Principally for Northern New Mexico.

❖ ESPERANZA SHELTER  
1-800-473-5220  
505-473-5200  
[www.esperanzashelter.org](http://www.esperanzashelter.org)

3130 Rufina St <<>> A shelter for those who have  
suffered from domestic abuse or violence. Esperanza also  
provides counseling and support groups.

❖ NATIONAL SUICIDE PREVENTION LINE  
1-800-273-8255

❖ TURQUOISE LODGE  
505-841-8978  
(Albuquerque, NM) <<>> Treatment for Narcotics and  
Alcohol as well as behavioral issues. Some indigent care.

### SERVICES FOR COMPANION ANIMALS

❖ SANTA FE ANIMAL SHELTER AND HUMANE  
SOCIETY  
505-474-6422  
[www.SFHumaneSociety.org](http://www.SFHumaneSociety.org)

100 Caja Del Rio Road <<>>  
Lost and Found, Spay and Neuter Programs, Adoption  
and Shots

❖ STREET HOMELESS ANIMAL PROJECT  
(SHAP)  
505-501-4933

A street outreach for homeless individuals who have cats  
and dogs. SHAP may provide food, and veterinary care  
for your furry friend. (Karen Cain)

### TRANSPORTATION

❖ Santa Fe Trails Bus Service  
505-955-2001  
505-955-2030  
2931 Rufina Street<<>>

❖ CARE CONNECTIONS

505-913-4350

2052 Galisteo <>> Help with vouchers for

Santa Fe Recovery Center, provides Behavioral

Counseling, Federally Funded. A division of Christus St.

Vincents Regional Medical.

❖ FRIENDSHIP CLUB

505-982-9040 505-920-2126

[www.friendshipclubsantafe.org](http://www.friendshipclubsantafe.org)

1316 Apache Avenue <>> NA, AA, OE and Sex  
addiction meetings.

❖ NARCOTICS ANONYMOUS HELPLINE

1-800-258-2971

505-984-2098

❖ MILLENNIUM TREATMENT

505-473-0571

219 Luisa St # 7 <>> NA Meetings

❖ OXFORD HOUSE

505-930-5049

[www.oxfordhouse.org](http://www.oxfordhouse.org)

to apply: [oxfordvacancies.com](http://oxfordvacancies.com) <>> Recovery without

Relapse. For men only at this time.

❖ NATIVE YOUTH CRISIS LINE

1-888-628-9454

❖ LGBT QUESTIONING YOUTH

(AKA the Trevor Line)

1-866-488-7386. also, LGBT Youth Suicide Prevention

Hotline: 1-800-850-8078

❖ ADULT PROTECTIVE SERVICES, STATE OF  
NEW MEXICO

866-654-3219 (24/7 Hotline)

Any person or institution that believes that an  
incapacitated adult is being abused or  
neglected can report information to this agency.

❖ CHILDREN YOUTH AND FAMILIES  
DEPARTMENT (CYFD), STATE OF NEW  
MEXICO

855-333-7233 (24/7 Hotline)

CYFD provides an array of prevention, intervention,  
rehabilitative and after-care services to New Mexico  
children and their families.

❖ NATIONALLY SEXUALLY TRANSMITTED  
DISEASE HOTLINE

1-800-227-8922



Sponsored by the Center for Disease Control, provides anonymous confidential information and referrals.

❖ **POISON CONTROL**  
1-800-222-1222

❖ **SOLACE CRISIS TREATMENT CENTER**  
1-800-721-7273 (24/7 Hotline)  
505-988-1951

[www.findsolace.org](http://www.findsolace.org)  
6601 Valentine Way <<>> For rape victims, or anyone who has experienced a traumatic event.

### GENERAL INFORMATION

❖ **NEW MEXICO HUMAN SERVICES DEPARTMENT**  
[www.hsd.state.nm.us](http://www.hsd.state.nm.us)  
1-800-432-6217

39 Plaza La Prensa, Santa Fe<<>>To apply for food stamps, cash assistance, general assistance, Medicaid programs, LIHEAP, etc.

❖ **New Mexico Medicaid Call Center:** 1-888-997-2583  
❖ **EBT Customer Service:** 1-888-473-3676  
❖ [www.ebtEDGE.com](http://www.ebtEDGE.com) (to check your benefits)  
❖ [www.yes.state.nm.us](http://www.yes.state.nm.us) (to apply, re-certify or make changes)

### ALCOHOLICS & NARCOTICS RECOVERY

❖ **NATIONAL DRUG INFORMATION, TREATMENT AND REFERRAL HOTLINE**  
1-800-662-HELP

❖ **ALCOHOLICS ANONYMOUS and ALANON**  
505-982-8932  
505-473-0101

[www.nmal-anon.org/Meetings\\_SantaFe](http://www.nmal-anon.org/Meetings_SantaFe)  
Free support group for people who have an alcohol problem and for their families. View internet schedule for locations and time.

❖ **SANTA FE RECOVERY CENTER**  
505-471-4958

[www.sfrecovery.org](http://www.sfrecovery.org)  
4100 Lucia Ln <<>> Services for drug and alcohol problems. Inpatient and Outpatient.

❖ **SOBERING CENTER**  
505-913-4330

[www.santafecountymn.gov](http://www.santafecountymn.gov)  
2052 Galisteo <<>> After Emergency Room Care for Narcotics and Alcohol problems. A division of Christus St. Vincents Regional Medical. No charge for services.

☞ **FREecycle**

[www.freecycle.org](http://www.freecycle.org)

Contact through internet only. Numerous free items posted daily.

☞ **CHAINBREAKERS COLLECTIVE**

[www.chainbreaker.org](http://www.chainbreaker.org)

505-989-3858

1515 5th st.<<>>

An economic and environment justice organization. At their location you may volunteer 4 hours at their Bicycle Resource Center and receive a YEAR-long city bus pass.

**PREGNANCY & FAMILY PLANNING**

☞ **CARE NET PREGNANCY CENTER OF**

**SANTA FE**

505-995-1998

1-800-395-HELP (24/HR HOTLINE)

[www.SantaFePregnancy.com](http://www.SantaFePregnancy.com)

1525 Fifth St.

☞ **PLANNED PARENTHOOD of Santa Fe**

505-982-3684

730 Saint Michaels Drive #4B

☞ **HEALTH AND HUMAN SERVICES - CALL**

"211"

[www.santafecountynm.gov](http://www.santafecountynm.gov)

Call Monday through Friday, 8:00am - 4:00pm for free information on health and human services in Northern New Mexico.

☞ **SOCIAL SECURITY ADMINISTRATION**

1-800-772-1213

or 1-866-571-8130

[www.ssa.gov](http://www.ssa.gov)

1922 W. 5th street

☞ **NEW MEXICO AGING AND DISABILITY RESOURCE CENTER (ADRC)**

[www.resourcedirectory.org](http://www.resourcedirectory.org)

505-476-4846

1-800-432-2080

2550 Cerrillos Road <<>> Confidential Information for a variety of issues, such as Medicaid, Medicare, Community Resources for Aging and Disability and Community Reintegration after nursing home care.

**FOOD**

☞ **FEEDING SANTA FE**

1222 Siler Road<<>> Drive-thru food pickup. This agency gives one bag of perishable groceries for each

adult in the car and extra items if there are children.  
Thursdays from 6:00 am – 9:00 am. Go early.

❖ BIENVENIDOS FOOD PANTRY

505-986-0583

[www.bienvenidosfoodpantry.org](http://www.bienvenidosfoodpantry.org)

1511 Fifth Street<<>> Food and clothing. Sack lunches:

Mondays, 10:00 a.m. to 1:30 p.m.; Tuesdays through

Thursdays, 10:00 a.m. to 2:30 p.m.; Food boxes —

Mondays, 11:30 a.m. to 1:30 p.m.; Tuesdays through

Thursdays, 11:30 p.m. to 2:30 p.m. A photo ID and

proof of residency are required for food boxes.

❖ ST. JOHN'S UNITED METHODIST CHURCH

505-982-5397

[www.sjumcsantafe.org](http://www.sjumcsantafe.org)

1200 Old Pecos Trail <<>>

They give a bag of groceries to each family on Tuesdays

and Thursdays from 10:00 a.m. – 12:00 p.m.

❖ ST. JOHN THE BAPTIST CATHOLIC CHURCH

505-983-5034

[www.stjohnsantafe.weconnect.com](http://www.stjohnsantafe.weconnect.com)

1301 Osage <<>> Serves free lunch Monday, Tuesday,

Thursday from 11:15 a.m. – 12:15 p.m.

[www.warehouse21.org](http://www.warehouse21.org)

1614 Paseo De Peralta <<>> Art classes &

Entertainment Programs & Services for youth

❖ COMCAST "INTERNET ESSENTIALS"

PROGRAM

[www.internetessentials.com](http://www.internetessentials.com)

\$10 per month internet access and a laptop computer for

\$150 if your family qualifies for public schools free lunch

❖ SOLACE TRAUMA TREATMENT CENTER

PARENT TRAINING

505-988-1951

[www.findsolace.org](http://www.findsolace.org)

6601 Valentine Way <<>> Training for parents

❖ HOPEWELL COMMUNITY CENTER

505-954-1237

1600 Espinacitas St. <<>> Computer Lab for public use,

English & Spanish GED, ESL. Closed for lunch.

Operated by the Santa Fe Civic Housing Authority.

❖ MY COMMUNITY NM

[www.mycommunitynm.org](http://www.mycommunitynm.org)

Contact through internet only. List of many local

bilingual services and resources.

☞ **CLASES DE INGLES O G.E.D.**

505-428-1444

Free at SF Community College

☞ **NATIONAL RUNAWAY HOTLINE**

1-800-621-4000

For teens and their families

☞ **BIG BROTHERS, BIG SISTERS**

505-983-8360

For children that need another adult role model

☞ **MEXICAN CONSULATE**

505-247-4177

Servicios y información para ciudadanos de México. (Services and help for Mexican citizens)

☞ **YOUTHWORKS!**

505-989-1855

[www.santafeyouthworks.org](http://www.santafeyouthworks.org)

1504 Cerrillos Rd <<>> Free GED classes, job services, training and counseling for youth. Also, construction skills training through their YouthBuild program.

☞ **WAREHOUSE 21**

505-989-4423

☞ **ST. VINCENT DE PAUL**

505-989-8328

505-983-5034

1088 Early Street <<>> Food, emergency funds and clothing.

☞ **SALVATION ARMY**

505-988-8054

[www.salvationarmyusa.org](http://www.salvationarmyusa.org)

525 West Alameda St. <<>> Breakfast: 8:00 -8:30 a.m.;

Dinner: 5:00-5:30 p.m., Mon. through Friday laundry and showers available specific hours only. Clothing available. Call Gladys to make an appointment for Social Services such as applications for PNM Good Neighbor and Heat New Mexico.

☞ **SANTA FE COMMUNITY SERVICES**

505-310-3624

[www.homelesservices@aol.com](mailto:www.homelesservices@aol.com)

2801 Cerrillos Road <<>> Serves lunch at Pete's Place Saturdays and Sundays 11:30 am to 1:00pm. Provides Case Management and Counseling and *Harm Reduction* which includes Accu-Detox, syringe exchange, and overdose prevention training. Monday through Friday 9:30 to 4:00pm at Pete's Place (2801 Cerrillos Road).

☞ **YOUTH SHELTERS STREET OUTREACH**  
505-988-2652

[www.youthshelters.org](http://www.youthshelters.org)  
402 St. Francis Drive <<>> (by Agua Fria) for homeless and runaway youth under 21. Open Monday through Friday --food, clothes, and other supplies, counseling, case management for homeless youth.

☞ **CHRIST LUTHERAN CHURCH**

505-983-9461  
[www.christlutheransantafe.org](http://www.christlutheransantafe.org)

1701 Arroyo Chamisa <<>> (by St. Michael's Dr. & Old Pecos Trail) provides a bag of food on Thursdays 10:00am to 12:00pm, one bag per month per family.

☞ **SOJOURNER'S ADVOCACY CAFE**

505-983-4182  
[www.thelifelink.org/our-services/sojourners](http://www.thelifelink.org/our-services/sojourners)  
1424 Fourth St. <<>> Provides assistance to moms and children. Tuesday - Friday 8:00am - 2:00pm. Help with community resources. Some computer access.

### **FUNDS FOR GAS & ELECTRICITY**

☞ **HEAT NEW MEXICO**

505-988-5715

Funds for Gas Bills Sponsored by New Mexico Gas

☞ **COMMUNITY OPTIONS INC.**

505-989-1471

518 Old Santa Fe Trail, Unit 2 <<>> Helps people with special needs, such as mental disabilities, find jobs.

☞ **ADELANTE SERVICES**

505-341-2000

Provides services for people with special needs, disabilities.

This is NOT the Santa Fe Public Schools ADELANTE Program.

### **MISCELLANEOUS**

☞ **SANTA FE NEED AND DEED**

[Help@SantaFeNeedandDeed.com](mailto:Help@SantaFeNeedandDeed.com)

[www.SantaFeNeedAndDeed.com](http://www.SantaFeNeedAndDeed.com)

841 W Manhattan Ave <<>> Westminster Presbyterian, (Manhattan Avenue and St. Francis Drive) Meetings Monday at 2:00pm. A Support Group and Mentoring program for adults who are experiencing homelessness are sober and drug-free. Includes free hot meal, free clothing and hygiene kits.

☞ **ADELANTE PROGRAM FOR**

**HOMELSS STUDENTS** ( Santa Fe Public Schools).

505-467-2571 or 505-467-2524

<<>> food, school supplies, uniforms, tutoring and other services for students and siblings.

301 W. De Vargas <<>> Helps with job searches and assistance

☛ NEW MEXICO DIVISION OF HUMAN RIGHTS

505-827-6838

Your rights in employment, housing, access to credit

☛ SOMOS UN PUEBLO UNIDO

505-424-7832

[www.SomosUnPuebloUnido.org](http://www.SomosUnPuebloUnido.org)

1804 Espinacitas St. <<>> Information about workers' and Immigrant rights as well as wage theft issues

☛ SANTA FE HIGH SCHOOL YOUTH CAREER CENTER

505-467-2431

☛ CAPITAL HIGH SCHOOL YOUTH CAREER CENTER

505-467-1166

For youth looking for a job or to learn about careers.

☛ DEPT. OF VOCATIONAL REHABILITATION

505-827-3526

[www.dvrgetsjobs.com](http://www.dvrgetsjobs.com)

2540 Camino Edward Ortiz, Ste B <<>> Helps with job training and other resources if you have a disability.

Company. Applications accepted January 1st from income qualified New Mexicans at Salvation Army/Santa Fe, You must first apply for LiHeap at Income Support Division (listed below). Money is exhausted quickly go as early in January as possible.

☛ ST. VINCENT DE PAUL

505-989-8328

1088 Early Street <<>> Monday - Friday 10:00am to 12:00pm (go in person to get appointment) for emergency funds; disconnect or eviction. Bring all paperwork. Need photo I.D. Social Security Card and must be a Santa Fe Resident. Ask to be seen by Church Council.

☛ INCOME SUPPORT DIVISION - HUMAN SERVICES

505-827-1932

[www.hsd.state.nm.us](http://www.hsd.state.nm.us)

39 B Plaza La Prensa <<>> To apply for LIHEAP, food stamps, and other assistance.

☛ PNM GOOD NEIGHBOR FUND

505-988-5715

[www.pnm.com/gnf-applying-for-help](http://www.pnm.com/gnf-applying-for-help)

525 West Alameda St. <<>> One time help with electric bills. (Apply through SALVATION ARMY)

## SHELTERS & HELP WITH HOUSING

### ❖ ESPERANZA SHELTER

505-473-5200

1-800-473-5220 (Domestic Violence Hotline)

[www.esperanzashelter.org](http://www.esperanzashelter.org)

3130 Rufina St <<>> This is a shelter for those who have suffered from domestic abuse or violence. Esperanza also provides counseling and support groups.

### ❖ LA OTRA PUERTA

505-438-0502

[www.youthshelters.org](http://www.youthshelters.org)

186 Airport Rd <<>> Shelter for teens, ages 12-17.

Provides counseling and help getting back into school.

### ❖ LA CASA LIBERTAD

505-955-1684

[www.youthshelters.org](http://www.youthshelters.org)

is a transitional living program for youth ages 16 -21.

Provides counseling and help getting back into school.

### ❖ LIFE LINK/ LA LUZ/ CASA MILAGRO/ CASA CERRILLOS- INTEGRATED COMMUNITY HOUSING

505-438-0010

2325 Cerrillos Road <<>> Treats behavioral health and

## LEGAL ASSISTANCE

### ❖ LAW ACCESS OF NEW MEXICO

1-800-340-9771

[<<>>](http://www.LawAccess.org) Help with all civil matters; Landlord/Tenant; housing, consumer, family law, public benefits and unemployment law. Free for all New Mexico residents must meet 200% of Federal poverty guidelines.

### ❖ SANTA FE LEGAL AID

505-982-9886

### ❖ CATHOLIC CHARITIES

505-424-9789

4985 Airport Road <<>> Un centro de apoyo para inmigrantes. (A support center for immigrants)

### ❖ PUBLIC DEFENDER'S OFFICE

(STATE OF NEW MEXICO)

1-800-296-8043

## WORK & WORKERS' RIGHTS

### ❖ NEW MEXICO DEPT. OF WORKFORCE

SOLUTIONS (formerly, Dept. of Labor)

505-827-7434

❖ **WIC (Women, Infants and Children)**

WIC provides formula and food for babies until age 5, nutrition education, breastfeeding information and referrals to health and social programs. Please call for an appointment.

505-474-9448 (Main Office 2538 Camino Entrada)

505-476-2602 (Located at 605 Camino Letrado)

505-438 3195 (Located at 2145 Caja de Oro Grant <<>>

La Familia Southside)

505-955-2820 (Located at 6599 Jaguar Drive <<>>

Southside Branch Library on 2nd & 4th Monday)

505-954-4601 (Located at 5600 Agua Fria <<>> Flores del Sol Head Start on Tuesdays)

❖ **UNITED WAY FIRST BORN PROGRAM**

505-660-7720

505-467-4550

440 Cerrillos Rd <<>> Free home visits and parent support

❖ **DIAPERS, FORMULA, BABY CLOTHES**

505-466-3715 Main line

505-983-4182 Sojourners

505-988-2652 Youth Shelters (under age 22)

505-988-5715 Salvation Army

505-986-0583 Bienvenidos

substance abuse problems. Life Link offers numerous programs for housing and housing assistance. May be able to provide rent or deposit help.

❖ **INTERFAITH COMMUNITY SHELTER  
AT PETE'S PLACE**

NIGHT SHELTER

505-795-7494

[www.Interfaithsheltersf.org](http://www.Interfaithsheltersf.org)

2801 Cerrillos Rd <<>> Shelter, dinner, breakfast and clothes. Opens October 18th Through Early May, at 6:00pm in evening for shelter and dinner. Off Season lunch is served on Saturdays and Sundays 11:30am to 1:00pm.

DAY SERVICES PROGRAM

505-795-7494

2801 Cerrillos Road <<>>

Open Tuesday, Wednesday AND Friday from 9:00am - 12:30pm for Lunch, showers, clothes, employment assistance, case management and counseling

ADDITIONALLY

Healthcare For the Homeless: Tuesday, Wednesday and Friday 8:30am to 11:30am

Life Link: Counseling for Substance Abuse & Behavioral Health and Housing: Tuesday, Wednesday and Friday 9:00am to 12:00pm

Santa Fe Community Services: Harm Reduction,

14

Provided and maintained by Santa Fe Need and Deed.

29



Acu-Detox, Case Management; Monday - Friday 9:00am to 4:00pm  
**Veteran's Administration:** Case Management and Housing; Monday - Friday 9:00am to 4:00pm by appointment  
**ACC Health:** Full Service Dental; Wednesday 9:00am to 4:00pm  
**Food Depot-SNAP enrollment:** 1st Wednesday of the Month; 9:00am to 1:00pm  
**Street Homeless Animal Project (SHAP):** Alternate Wednesdays or as requested; 9:00am to 1:00pm  
**Goodwill Industries:** Job Developer; Friday 9:00am to 1:00pm  
**La Familia's Echo Program:** Wednesday 9:00am to 1:00pm  
**Homeless Court:** Judge Ann Yalman; Monthly as scheduled 1:00pm to 4:00pm  
**Legal Clinic:** Fridays 10:00am to 12:00pm  
**Southwest Care Center:** 2nd and 4th Tuesday 9:00am to 12:00pm  
**Youth Shelters Street Outreach:** Tuesday and Wednesday 7:00pm to 9:00pm  
**Alcoholics Anonymous:** Tuesday, Wednesday and Thursday 7:00pm to 8:00pm  
**Open Art Studio:** Tuesday, Wednesday and Friday 9:30am to 2:00pm  
**Haircuts:** Alternate Tuesdays 10:00am to 12:00pm  
**Weekend Lunches:** Saturday and Sunday 11:30am to 1:00pm

## SERVICES FOR YOUNG CHILDREN

### ❖ LAS CUMBRES COMMUNITY SERVICES COMMUNITY INFANT PROGRAM

505-955-0410

[www.lascumbres-nm.org/infant-program](http://www.lascumbres-nm.org/infant-program)

805 Early Street, Suite B-102 <<>>

Focuses on the mental health of infants up to age three; provides counseling, emotional support, and parenting assistance.

### ❖ NEW VISTAS

505-988-3803

[www.newvistas.org](http://www.newvistas.org)

205 Parkway Dr <<>> Provides parenting support and special therapies for infants and toddlers that have developmental concerns

### ❖ HEAD START / EARLY HEAD START

505-982-4484

[www.nmheadstart.org](http://www.nmheadstart.org)

Several learning programs for children, age 6 weeks to 5 years

### ❖ MANY MOTHERS

505-983-5984

[www.manymothers.org](http://www.manymothers.org)

1824 Tewa Rd <<>> For moms with new babies

☛ **TEEN HEALTH CENTER**

Santa Fe High School 505-467-2439

Capital High School, 505-467-1081

Free for age 12-19.

☛ **SANTA FE RECOVERY (RAP)**

505-471-4985

[www.sfrecovery.org/](http://www.sfrecovery.org/)

4100 Lucia Lane <<>> Services for people with drug/alcohol problems.

☛ **SANTA FE COMMUNITY SERVICES**

505-310-3624

2801 Cerrillos <<>> Monday through Friday 9:30am to 4:00pm. Help for addicts through Acudetox, syringe exchange, counseling assistance and case management.

☛ **NEW VISTAS**

505-471-1001

[www.newvistas.org](http://www.newvistas.org)

205 Parkway Dr <<>> Disability support and advocacy.

Both a childhood and adult program. Support services: Disability Advocacy, Independent living skills, Peer support and Information and referral.

Financial support may be obtained for rental assistance once you are a consumer/client.

☛ **SAINT ELIZABETH'S SHELTER INC.**

Supportive Housing Programs (Sober and Drug-Free facilities)

[www.SteShelter.org](http://www.SteShelter.org) email:[info@steshelter.org](mailto:info@steshelter.org)

\* Emergency Men's Shelter

804 Alarid

505-982-6611

Open 24 hours

\* Casa Familia

1604 Berry Street (off Second Street)

505-983-2042

Emergency Shelter for women and families with children. Case Management. Open Daily at 3:30pm.

\* Sonrisa

6321 Jaquar Drive

505-424-6973

Transitional living program.

Eight reduced rent apartments for homeless families with children.

\* Siringo

1905 Siringo road

505-204-0122

8 units for homeless seniors (55+)

☛ **SANTA FE CIVIC HOUSING AUTHORITY**

505-988-2859