



Agenda

CITY CLERK'S OFFICE

DATE 11-10-09 TIME 4:12

SERVED BY Jessie B. Espinoza

RECEIVED BY [Signature]

Parks and Open Space Advisory Commission

Wednesday, November 18, 2009

Parks Trails and Open Spaces Offices

Building C, 1142 Siler Rd

3:00 pm to 5:00 pm

1. Call to Order
 2. Roll Call -
 3. Review and Approval of the October minutes
 4. Approval of the Agenda
 5. Old Business
 - Parks Update – Fabian (15 minutes)
 6. New Business
 - Santa Fe Metropolitan Planning Organization Bikeways Project - Keith P. Wilson, MPO Senior Planner
- Possible Reports:
- Youth Sports and Little League - Tom Agard
 - Community Gardens Update – Jessie/Bette
 - Soccer – Marge VeneKlasen
 - Art in Ragel Park - Anna Hansen
 - NW Quadrant/BMX / Skate Parks – Daniel Coriz
 - Tierra Contenta Parks – Orallynn Guerrerortiz
 - Park History / History on the City Portal – Sandie Taylor
6. Public Comments
 7. Confirm date and time for the next meeting – December 16, 3:00

Persons with disabilities in need of accommodations, contact the City Clerk's office at 955-6520, five (5) working days prior to meeting date.

INDEX OF
CITY OF SANTA FE
PARKS AND OPEN SPACE ADVISORY COMMISSION

November 18, 2009

<u>ITEM</u>	<u>ACTION TAKEN</u>	<u>PAGE(S)</u>
1. CALL TO ORDER		1
2. ROLL CALL	Quorum	1
3. REVIEW AND APPROVAL OF MINUTES October 28, 2009 Minutes	Approved	1
4. APPROVAL OF AGENDA	Approved	1-2
5. OLD BUSINESS		
▪ Parks Update	Fabian Chavez	2-4
6. NEW BUSINESS		
▪ SFMPO Bikeway Project	Keith Wilson and Tim Rogers	4-5
Reports:		
▪ NW Quadrant/BMX / Skate Parks	Daniel Coriz	5
▪ Park History	Sandy Taylor	5
8. PUBLIC COMMENTS		5-6
9. DATE AND TIME FOR NEXT MEETING & ADJOURN	December 16, 2009 4:58 p.m.	6 6

MEETING MINUTES
FOR THE
PARKS AND OPEN SPACE ADVISORY COMMISSION

Wednesday, November 18, 2009

CALL TO ORDER

A regular meeting of the City of Santa Fe Parks and Open Space Advisory Commission was called to order in the absence of the Chair, by Tom Agard, on this date at approximately 3:00 pm at Parks Trails and Open Spaces Offices, 1142 Siler Road., Santa Fe, New Mexico.

ROLL CALL

Roll call indicated the presence of a forum as follows:

Members Present

Tom Agard
Daniel Coriz
Anna Hansen
Sandra Taylor
Patrick Torres
Marg Veneklasen
Joe Lehm

Members Absent

Elizabeth Booth, Chair (excused)
Oralynn Guerrerortiz (excused)

Staff Present

Jesse Esparza, Parks Division
Fabian Chavez, Parks Director
Bob Wood, Parks Division

Others Present

Keith Wilson, Senior Planner MPO
Tim Rogers, MPO
Charmaine Clair, Stenographer

APPROVAL OF THE MINUTES-October 28, 2009

Page 8, Mr. Agard clarified he worked with Jessica Frost on the state Safe Routes to School Program.

Mr. Joe Lehm was incorrectly referred to throughout the minutes as Joe *Linn*.

Mr. Torres moved to approve the minutes as amended. Ms. Taylor seconded the motion and it passed by unanimous voice vote.

APPROVAL OF THE AGENDA

Mr. Torres moved to approve the agenda as presented. Mr. Coriz seconded the motion and it passed by unanimous voice vote.

Mr. Agard said that Chair Booth requested the January meeting be a review of the mission statement and where the commission wanted to go moving forward.

OLD BUSINESS

▪ Parks Update – Fabian Chavez

Mr. Chavez provided an update. A summary follows:

- The Parks Master Plan went before Public Works that week and copies of the implementation plan could be reviewed in the Parks office.
- The governing body for the most part was happy with the work and pace. Councilor Romero asked about the unexpended funds and talked about her experience at the board meeting. It was reiterated that POSA had agreed to wait until all build out was done to look at the funds left. The governing body agreed with the decision.
- Bob Siqueiros would be invited to the next meeting to answer questions about trails and discuss what was being done.
- The River parkways were coming up and could possibly have other items that contributed to the final costs. Most were within the estimate.
- Jennifer Richardson said last year's income at the MRC was \$67,311 in regard to a question about fees collected.
- Councilor Romero suggested a report card on the parks bond that could be put in the newspaper to make the public aware.

Ms. Hansen offered to design a sign that said "your bond money at work" to make the public aware. Mr. Agard asked that the design be brought to the next meeting. Mr. Chavez noted there were signs made that said "your bond money at work" and offered to pull out the signs for them to see.

- Salvador Perez, patio (where the pool was)—was finished. Construction had started. Irrigation and tree planting and would take about 60 days.
- Cornell Park- was about three weeks from completion and would be finished in the spring. The roses had been ordered.
- Larragoite and Frenchy's- the packets were ready and were what was anticipated. Bids would go out.
- Frank Ortiz Dog Park- moved forward. EPA and contaminated landfill regulations had been finished.
- Patrick Smith Park-shade structure was approved by the H Board (Historic Design Review) and would go up.
- GCCC Park-was under design and would be ready within 2 weeks.
- Sunny Slope- design was finished. There were questions on parking and interest in a community garden.
- Salvador Perez and Ashbaugh Park-went to local design firms: Surroundings for Perez and Claudia Horn for Ashbaugh.

- Nava Ade-the landscape architect that had worked with the neighborhood for the last two years on the conceptual and schematic design met with them. RFQ was out and a topographical survey would be done. The park would be about \$2 million and the contractor selected would be asked to take plans to 65%. The neighborhood would then look at what could be done. The project could take 5 years to build.
- John F. Griego- was almost complete.
- Franklin Miles- to be completed mid December. The soil prep and tree plantings were being done.
- Power Plant Park- to be completed by the end of December. Some irrigation problems had been resolved.
- Tennis courts at various parks would be re-surfaced in May.
- Pueblos del Sol Trail- was still a challenge and ADA compliance was difficult. City engineering had the ADA committee approve the trail portions of grades that were compliant and asphalt would be done. New routes were being surveyed to go around houses to obtain 5-6% grades. Some pieces wouldn't be ADA compliant.
- Ragle Park- was almost ready for bid. The engineering firm would be hired to do the hydrology. Water would be run through the kid's play feature and then be used to irrigate the fields and would require state and federal permits. Would possibly be ready to bid next month. Mr. Chavez had discussed Ragle not being closed with Robert Romero. A start date wouldn't be awarded until after baseball season so the build out could be done without displacement. Mr. Agard agreed the timing was an excellent compromise. Mr. Chavez would let Mr. Romero know to move forward and Mr. Agard would contact Councilor Ortiz about the decision.

Mr. Chavez said Parks had worked on Arbor Day for two years. Councilor Calvert and others had requested the City of Santa Fe be recognized and apply for Tree City, USA status.

Mr. Wood asked that a copy of the resolution be attached to the minutes (Exhibit 1.) He said everything had to be completed by the end of December and status was difficult to obtain but if received would open up state and federal dollars and increase public awareness.

He said the elements required an Arbor Day proclamation that set a specific day and the third Friday in April was chosen. Celebration would be done on the traditional national Earth Day rather than the state celebration.

He thought more public input was needed and he asked that two members of the POSA board sit on the Arbor Day board. Four meetings would be held a year. Members would review the tree standards and look at the ordinance and make recommendations and should ensure there was a budget dedicated. A tree inventory was desired and a drive by inventory would be done rather than a physical count and a replacement plan was needed for certain areas.

He said the status would open the city up for grant opportunities. Banners would be used on major thoroughfares throughout the city to advertise and increase awareness. The banners would then be manufactured into tote bags and auctioned off with the money going back to the organization.

Mr. Agard asked for those interested in being a committee member on Tree City, USA to email Chair Booth.

NEW BUSINESS

- *Santa Fe Metropolitan planning Organization (SFMPO) Bikeways Project-Keith Wilson*

Mr. Wilson introduced himself as the Senior Planner with SFMPO and gave the commission an overview of the SFMPO. He said Santa Fe had been in the SFMPO since 1952. The MPO was housed in the city but worked under the federal transportation planning funding and served the city and a large part of the county. A major function was to oversee the programming and spending of federal dollars. Every five years the long range Metropolitan Transportation Plan (MTP) was required to be updated for how funds would be spent over twenty years. The plan was due June, 2010.

He worked on a comprehensive master for bike trails and paths, and an overall infrastructure that would improve the overall attractiveness, safety etc. Alternate modes of transportation were looked at to use instead of driving.

Mr. Wilson introduced Mr. Rogers who was hired as a planner with a strong knowledge of bike paths. He said Mr. Rogers would meet with BTAC (Bicycle and Trail Advisory Committee) and the county with the idea everyone should be on the same page for connectivity and a useful system.

Mr. Rogers began a Power Point presentation (Exhibit 2) and said he worked with different agencies, the county and the city and worked on a list of tasks such as an inventory of bicycle facilities, where the opportunities were and prioritization.

He reviewed the bicycle facilities, shared use paths and independent alignments for shared use paths such as the Santa Fe River, Acequia Madre, Trampas, and Santa Fe Southern RR etc. He talked about the prioritization factors such as local land use, continuity and connectivity with other bicycle facilities, pedestrian demand not met by sidewalks and feasibility and costs.

Maps were shown of the Urban Trail and Bikeway System and the expanded Bikeway System, and the Santa Fe County development plan for on road bikeway network.

Priority 1 improvements for road and trails were shown and the connections for the Acequia and Rail Trail, Rail Yard Park, River Trail, North Spine Trail, Ashbaugh and Arroyo Trails among others.

He said when trails were discussed it was impossible not to discuss pedestrians and all should be encompassed. There should be choices other than motorized and a good design for pedestrians where ADA was followed and convenient, would be a good design for bicycles as well.

He saw a trend with the 2007 Master Plan of bond limitations and fiscal constraints and hoped the planning around trails was in the forefront regardless of money available.

A map made by BTAC was shown that had 90 % of alignments. He said some alignments weren't practical and wouldn't make sense to invest in and he would start with what the trail system was and build from there.

The commission discussed crosswalk markings, striping and signage. Mr. Rogers said engineering made the decision if stripes were put in and the purpose of a marking a crosswalk was different from the legal perspective. Some crosswalks didn't facilitate a pedestrian crossing but could still be a legal crosswalk.

Mr. Rogers said the Acequia Trail combined with the Rail Trail created a north south corridor that continued to the River Trail and there was an opportunity, in Alto Park to provide direct access. He proposed a ramp for access and signage and striping to make it compliant.

Frenchy's Field crosswalk location was discussed in comparison to the opening that was placed further down. Mr. Rogers said there should be no hesitation on a two lane road to mark the crosswalks and the commission could advise an opening be established at the crosswalk.

Mr. Wilson said he would meet with BTAC the next evening and the commission could contact him with any questions or comments.

Possible Reports:

There were no reports for:

Youth Sports and Little League, Community Gardens, Soccer, Art in Ragle Park /BTAC, or Tierra Contenta Park

- *Northwest Quadrant/BMX / Skate Parks -Daniel Coriz*

Mr. Coriz said a landowner had an issue with some items on her property and she was assisted in removing them. The Franklin Miles Park Skate Park had new ledges and open space. He said issues he wanted to bring up could wait until the next meeting.

- *Park History-History on City Portal-Sandra Taylor*

Ms. Taylor brought the deed from Amelia White to the city. She found the survey that showed Old Santa Fe Trail as what was now Pecos Road, interesting and a bridal path that had been deeded to the city in the 1930's.

Ms. Hansen offered history she had on Gregory Lopez. His family still lived in the Casa Alegre area and he was stabbed and killed as a child and the park was named for him.

PUBLIC COMMENTS

Mr. Agard asked the commission to take the 10 priority one items and develop recommendations for action items for the next meeting.

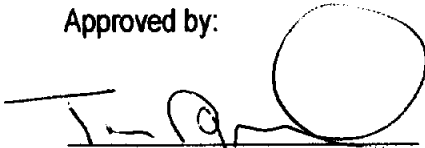
DATE AND TIME FOR NEXT MEETING: December 16, 2009 at 3:00 p.m.

ADJOURN:

Mr. Hansen moved to adjourn the meeting. Ms Veneklasen seconded the motion and it passed by unanimous voice vote.

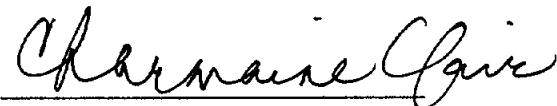
Having no further business to discuss, the meeting was adjourned at 4:58 p.m.

Approved by:



Tom Agard, Acting Chairperson

Submitted by:



Charmaine Clair, Stenographer

CITY OF SANTA FE, NEW MEXICO

RESOLUTION NO. 2009-__

INTRODUCED BY:

Councilor Calvert

A RESOLUTION

**AMENDING RESOLUTION NO. 2007-22 WHICH ESTABLISHED THE PARKS AND
OPEN SPACE ADVISORY COMMISSION IN ORDER TO INCLUDE A
SUBCOMMITTEE TO SERVE AS THE MUNICIPAL TREE BOARD.**

WHEREAS, the governing body adopted Resolution No. 2007-22 in order to reestablish
an active advisory committee to look at parks and open space in a holistic manner; and

WHEREAS, the governing body desires to amend the duties and responsibilities of the
parks and open space advisory commission to include a subcommittee of the commission for the
purpose of acting as the municipal tree board in order to qualify the city of Santa Fe as a member
of the National Arbor Days Foundation's Tree City USA (TCUSA) program.

**NOW, THEREFORE, BE IT RESOLVED BY THE GOVERNING BODY OF THE
CITY OF SANTA FE** that Resolution No. 2007-22 is amended to read.

AND BE IT FURTHER RESOLVED that:

Section 1. NAME. The Parks and Open Space Advisory Commission.

Section 2. PURPOSE. The commission shall review and make

1 recommendations to the governing body and city staff related to parks and open space.

2 Section 3. DUTIES AND RESPONSIBILITIES.

3 A. The commission shall make recommendations regarding the priorities for
4 funding parks and open space improvements in the *Parks, Open Space, Trails, and Recreation*
5 *Master Plan* in a timely manner in anticipation of the regular municipal election in March 2008
6 wherein the governing body may ask the voters to approve a general obligation bond to fund the
7 improvements.

8 B. The commission shall provide ongoing advice regarding all park and open space
9 related issues including, but not limited to, the acquisition, dedication, planning, development,
10 construction, operation and maintenance.

11 C. The commission shall consult with the following groups as needed: the public
12 works department's various divisions; the recreation division of the community services
13 department; the planning and land use department; the county of Santa Fe; the bicycle and trails
14 advisory committee; the Santa Fe River commission; the planning commission; the Genoveva
15 Chavez community center advisory committee; and the municipal recreation complex advisory
16 committee.

17 Section 4. MEMBERSHIP; OFFICERS; SUBCOMMITTEES

18 A. The commission shall consist of nine members appointed by the mayor with the
19 approval of the city council. Members shall be persons who have expressed an interest in serving
20 on the commission; who represent a broad range of park and open space users; have backgrounds
21 related to active, passive, regional, community, or neighborhood parks or open space policies;
22 have knowledge of park or open space use, maintenance or construction; and who are qualified by
23 training, experience, and ability to exercise sound and practical judgment regarding the duties and
24 responsibilities of the commission.

25 B. The mayor, with the approval of the city council, shall appoint the chairperson.

1 The chairperson shall designate the vice chairperson. The chairperson shall serve as chairperson
2 for a period of one year. Following one year of service, the chairperson shall be elected (or
3 reelected) by the members of the commission.

4 C. Two members of the commission, appointed by the chairperson, and the city
5 forester (or other parks division staff as needed) shall serve as the municipal tree board in order to
6 complete the city's comprehensive tree policy as set forth in Resolution No. 2007-28 and to
7 administer the program. The chairperson shall appoint other sub-committees and sub-committee
8 chairpersons as needed.

9 Section 5. TERMS. Of the initial appointments, four of the members shall be
10 appointed for two year terms and five shall be appointed for four year terms. Subsequent terms
11 shall be for four years to maintain staggering of terms. There shall be no limitation to the number
12 of consecutive terms a member may serve. The chairman shall serve for a two year term. After
13 three consecutive unexcused absences a commission member shall be automatically removed and
14 notified thereof by the chairman. Vacancies shall be filled in the same manner as initial
15 appointments and shall be for the remainder of the unexpired term. Any member of the
16 commission may be removed by the mayor with the approval of the city council, with or without
17 cause.

18 Section 6. MEETINGS. A quorum shall be at least five members. The
19 commission shall meet at least once per month and shall conduct all meetings in accordance with
20 adopted city policy and procedures.

21 Section 7. STAFF. The parks division shall serve as the primary liaison to
22 the commission. Depending upon the issue, other city staff may also be required to assist the
23 commission.

24 PASSED, APPROVED and ADOPTED this _____ day of _____, 2009.
25

1
2
3
4
5
6
7
8
9
10
11
12
13
14
15
16
17
18
19
20
21
22
23
24
25

DAVID COSS, MAYOR

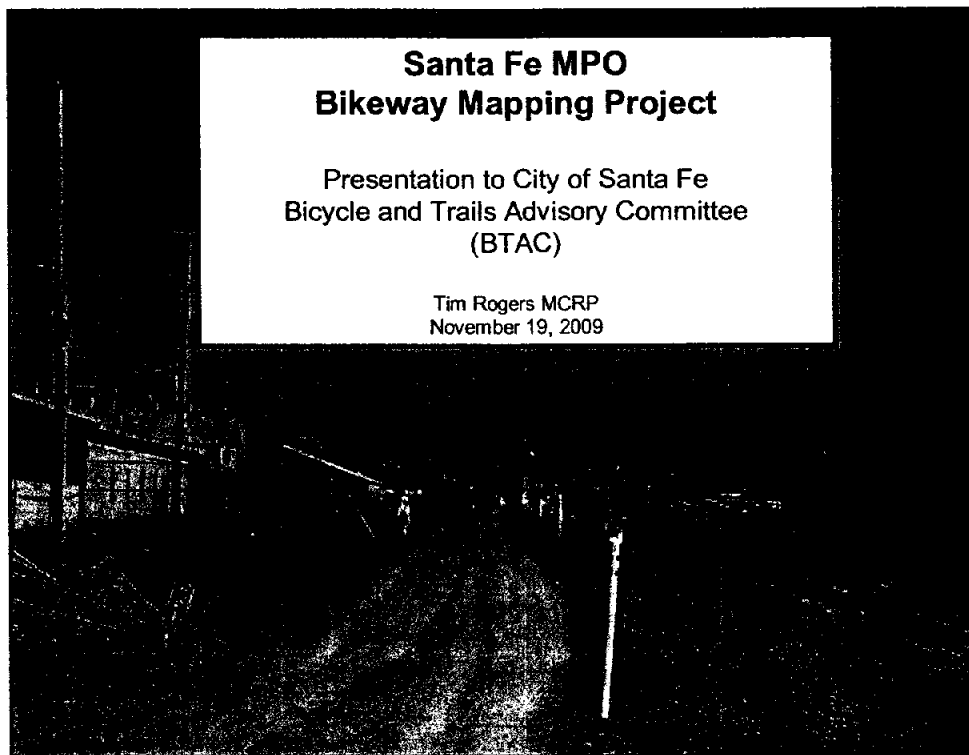
ATTEST:

YOLANDA Y. VIGIL, CITY CLERK

APPROVED AS TO FORM:

FRANK D. KATZ, CITY ATTORNEY

Jp/ca/jpmb/parks adv com tree subcom



Tasks

- Map existing and proposed bicycle facilities
- Prioritize for inclusion in Metropolitan Transportation Plan (MTP)
- Participate in inter-agency and public discussion
- Revise based on feedback

Santa Fe MPO
Bikeway Mapping Project
Tim Rogers MCRP
November 19, 2009

Bicycle Facilities

- On-Road: Shared Lanes, Bike Lanes, Paved Shoulders
- Off-Road: Shared-Use (or “Multi-Use”) Paths
- Crossings: Road/Trail Interface
- Other signage and pavement markings (e.g., Bike Route guidance signage; shared lane arrows)
- Bicycle parking and other “amenities”

Santa Fe MPO
Bikeway Mapping Project
Tim Rogers MCRP
November 19, 2009

On-Road Bicycle Facilities

- **Complete Streets**
 - Bike lanes or paved shoulders where shared lanes are not sufficient
 - Desirable min. width = 5 feet
 - Pavement Surface Quality: One level, no lip
(see AASHTO 1999)
- **Retrofits** (on existing roadways)
 - Restripe (e.g. “Road Diet”)
 - Widen

Santa Fe MPO
Bikeway Mapping Project
Tim Rogers MCRP
November 19, 2009

Shared Use Paths: What AASHTO Says

- “Shared use paths are facilities on exclusive right-of-way and with minimal cross flow traffic.”
- “Shared use paths should be thought of as a complementary system of off-road transportation routes for bicyclists and others that serves as a necessary extension to the roadway network. Shared use paths should not be used to preclude on-road bicycle facilities, but rather to supplement a system of on-road bike lanes, wide outside lanes, paved shoulders and bike routes.”

AASHTO Guide for the Development
of Bicycle Facilities (1999) p. 33

Santa Fe MPO
Bikeway Mapping Project
Tim Rogers MCRP
November 19, 2009

Appropriate Independent Alignments for Shared Use Paths

- **River, Lake, Ocean** Santa Fe River
- **Acequia** Acequia Madre / Acequia de los Pinos
- **Arroyo** Trampas, Mascaras, Verde, Cañada Ancha, Pinos,
N. Chamisos, Chamisos, Chaparral, Hondo
- **Rail (active and abandoned)**
Santa Fe Southern RR, N.M. Central RR (Kennedy Line),
Chile Line, Various Spurs
- **Utility Lines** Sewer, Power, Communications, Water
- **Property Lines** Acequia Trail / PNM site, Various Subdivisions
- **Abandoned roadways** Old Cam. Lejo, CSF, Cañada Ancha (Hyde Pk Rd.)
- **Limited access roadways** I-25, NM599, St. Francis Dr.
- **Public Land** Open Space, “Parkways”, other
City/County/State/Federal facilities

Santa Fe MPO
Bikeway Mapping Project
Tim Rogers MCRP
November 19, 2009

Factors for Prioritizing Road and Trail Improvements for Bicycle Transportation

- Local land use and population density
- Continuity and connectivity with other bicycle facilities
- Destinations of particular interest to bicycle and pedestrian traffic
- Input from bicyclists
- Pedestrian demand not met by sidewalks

Santa Fe MPO
Bikeway Mapping Project
Tim Rogers MCRP
November 19, 2009

Factors against Prioritizing Road and Trail Improvements for Bicycle Transportation

- Feasibility / Cost
 - Topography
 - Safety: Motor vehicle conflicts & ability to overcome them (or not)
 - Land & Easement Ownership
 - Community Concerns
- Availability of other facilities to safely and conveniently reach same destinations

Santa Fe MPO
Bikeway Mapping Project
Tim Rogers MCRP
November 19, 2009

Santa Fe MPO Member Agencies

- City of Santa Fe
- County of Santa Fe
- Tesuque Pueblo
- State of New Mexico: NMDOT District 5

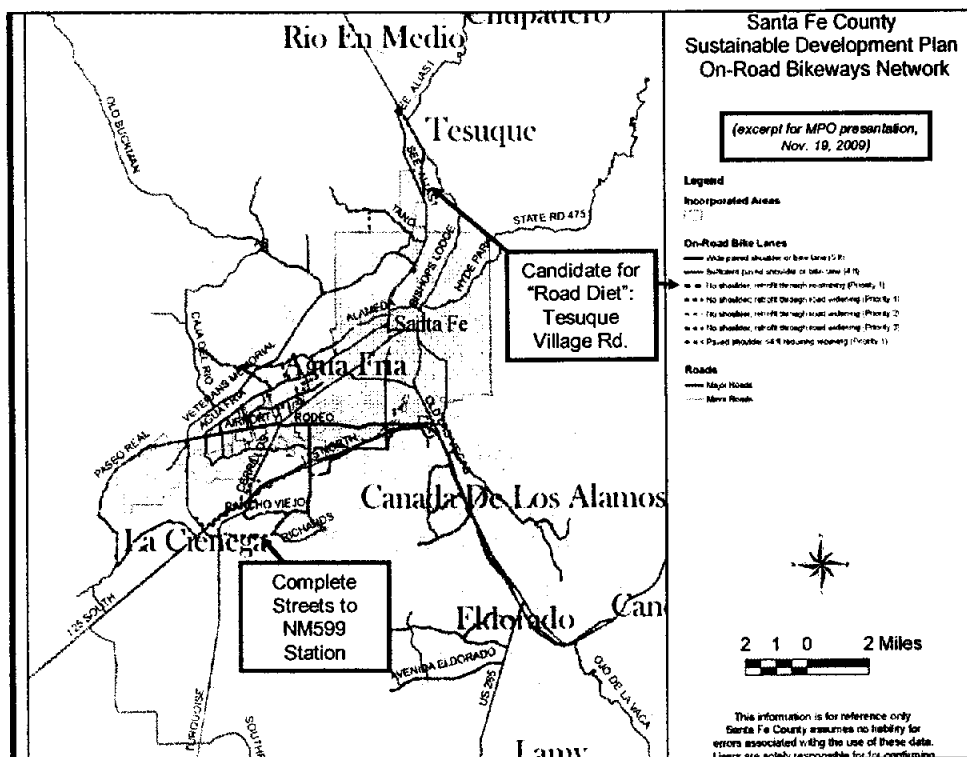
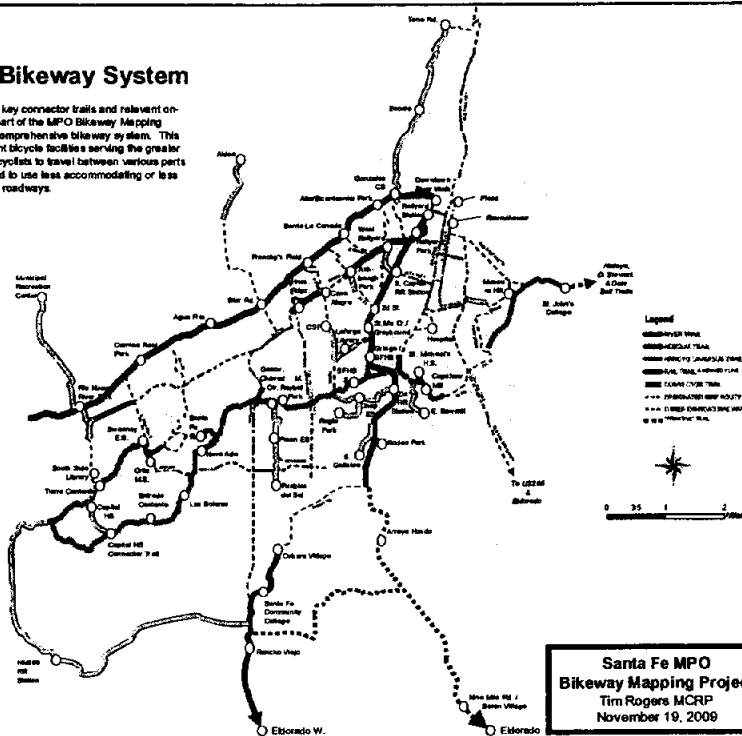
Santa Fe MPO
Bikeway Mapping Project
Tim Rogers MCRP
November 19, 2009

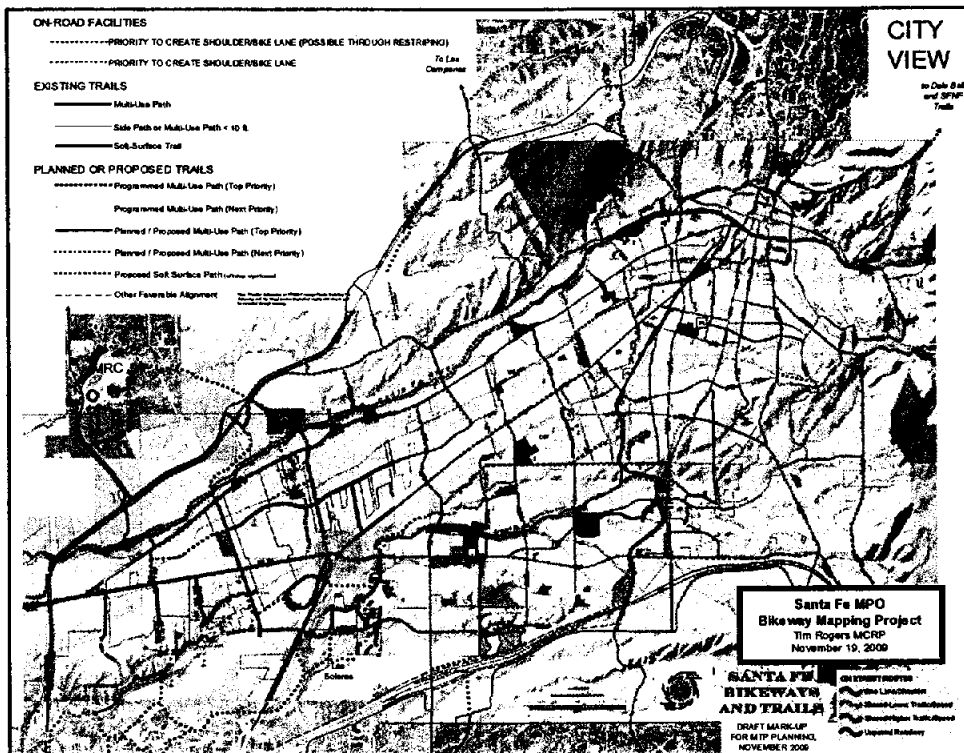
Sources

<u>Agency</u>	<u>Publication</u>	<u>Date</u>	<u>Location</u>
Transportation / Bikeway / Trail Planning Documents			
MPO/TPB	Santa Fe Future Transportation Network	2005 / Amended 2008	Printed Map
MPO	Metropolitan Transportation Plan	2005	Printed Copy
City / BTAC	BTAC Big Picture Map	2004	Printed Map
City	Santa Fe Bikeways Master Plan (1993)	1993	Printed Copy
City/River, Watershed & Trails Section			
	BTAC Trails Projects	2009	http://www.santafe.org
	River Trail and Watershed Restoration	2009	http://www.santafe.org
	Northwest Quadrant Trails	2009	http://www.santafe.org
	Dale Ball Trails and Connecting Trails and Biking Trails	2009	http://www.santafe.org
Santa Fe County Geographic Information Systems			
	Various maps created for this task	2009	
Local / Regional Plans			
County	Tres Arroyos del Poniente, Adopted Community Plan	March 14th, 2006	http://santafeco.org
County	Community College District Plan		http://santafeco.org
City	La Tierra Trails	2009	
City	NW Quadrant	2009	http://www.santafe.org
City	Parks Master Plan	2007	http://www.santafe.org
City	City Parks Bond Implementation Plan	2008	http://www.santafe.org
Published Maps			
City/MPO	Santa Fe Bikeways and Trails Map	2008, 2009	Printed Map; on
County / City	Dale Ball Trails and Connecting Trails	2004	Printed Map
Conceptual Maps			
NMDOT	Major Trails (with On-Road Bikeway connections)	2005	
NMDOT	Independent Alignments	2005	
K Wilson	Conceptual Layout for Extending Rail Trail to Cordova St.	2008	
J Frost	Chaparral Trail	2008	
Other Communications			
	North Spine Trail	2006	
	Palace - Gonzales Connection	2009	

Santa Fe MPO
Bikeway Mapping Project
Tim Rogers MCRP
November 19, 2009

This expanded view adds key connector trails and relevant on-road routes identified as part of the MPO Bikeway Mapping Project to depict a more comprehensive bikeway system. This grid of safe and convenient bicycle facilities serving the greater metropolitan area allows cyclists to travel between various parts of the city without the need to use less accommodating or less comfortable higher-speed roadways.





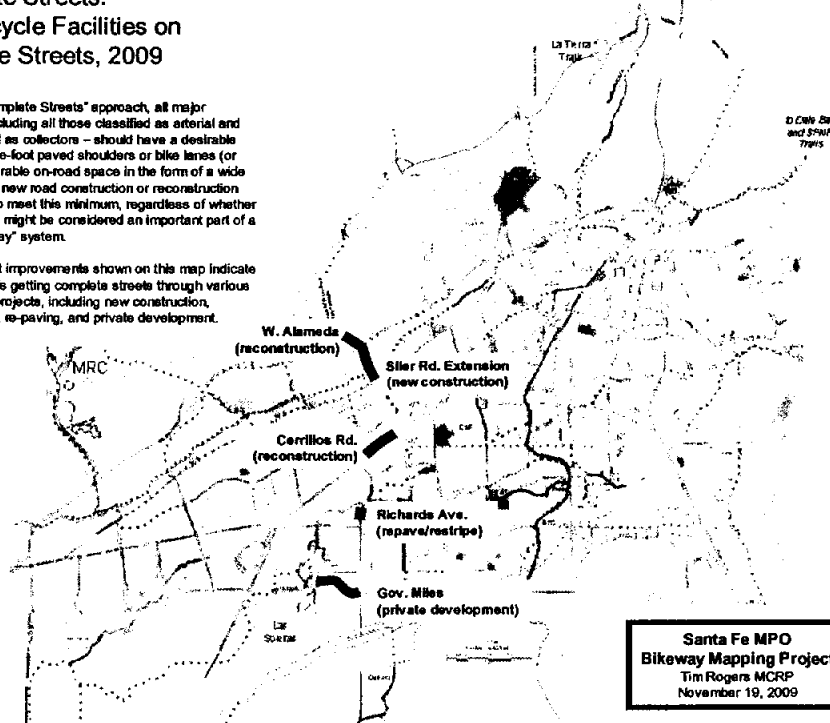
RECOMMENDED STATE HIGHWAY IMPROVEMENTS			
Priority to improve	State Highway	Name/Description	Bike Facility: Desirable
High	NM14	NM14 between I-25 and NM599	5' paved shoulder; eliminate shoulder seams*
Medium	NM599 frontage	NM599 frontage roads, inc. W. Alameda ext.	5' paved shoulder throughout; eliminate shoulder seams; provide min. 1' shy distance from guard rails
	NM14	South of NM599 to Camino Vieja Grande	>5' paved shoulder in place; eliminate shoulder seam with next maintenance overlay
	NM14	Carrizos Rd. in City of Santa Fe from Camino del Cielo to Fifth St. (City Maintenance)	min. 5' bike lanes
	NM475	Hyde Park Rd.	min. 5' paved shoulder; consider single shoulder on climb side; some pedestrian needs
	NM475	Paseo de Perilla	Seek opportunities to stripe 4-5' bike lanes / shoulders
Lower	NM599 frontage	Connectors: Via Abajo, Via Veteranos, Camino La Tierra, etc.	min. 4' paved shoulder in place; eliminate shoulder seams with next overlay
	I-25 frontage	Frontage roads west of city; both sides	min. 4' paved shoulder; eliminate shoulder seams with next overlay
	US84/285 frontage	West-side frontage roads north of city (includes part of State Bike Route "9")	min. 4' paved shoulder; eliminate shoulder seams with next overlay
	NM300	Old Las Vegas Highway ("State Bike Rte. 9")	In place; eliminate shoulder seams with next maintenance overlay
	US285	US285, including connector to NM300 ("State Bike Route 9")	In place; improve shoulders with next maintenance overlay
	NM592	Road to Rio en Medio	min. 4' paved shoulder; consider single shoulder on climb side; some pedestrian needs

*See City of Santa Fe Resolution 2009-10, Santa Fe County Resolution 2009-135, and AASHTO (1998), p. 18, regarding pavement surface quality

Complete Streets: New Bicycle Facilities on Santa Fe Streets, 2009

Under the "Complete Streets" approach, all major roadways – including all those classified as arterial and most classified as collectors – should have a desirable minimum of five-foot paved shoulders or bike lanes (or provide comparable on-road space in the form of a wide curb lane). All new road construction or reconstruction should strive to meet this minimum, regardless of whether or not the road might be considered an important part of a greater "bikeway" system.

The five recent improvements shown on this map indicate that Santa Fe is getting complete streets through various kinds of road projects, including new construction, reconstruction, re-paving, and private development.

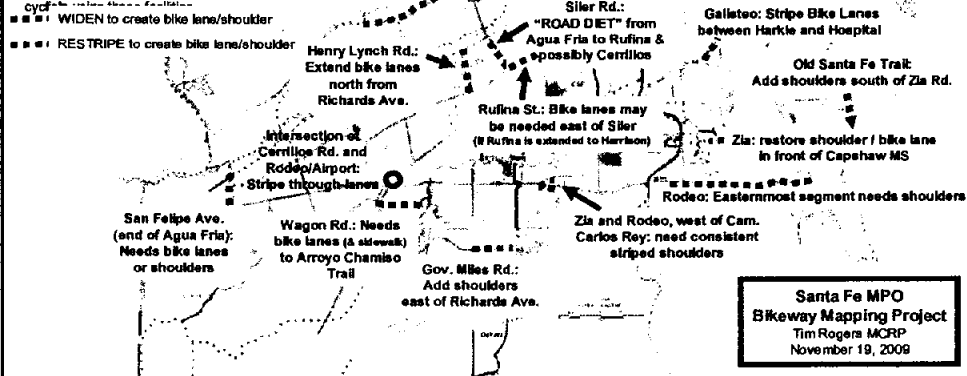


Priority 1 Road Improvements on Current and Future City of Santa Fe Streets

(sixteen specific road segments & one intersection)

Roads in the MPO area that need improvements are identified on the map-up of the Santa Fe Bikeways map on preceding pages. City street segments identified on this map are prioritized for improvement specifically because they represent significant opportunities to improve the metropolitan bikeway system. Those identified in red are priorities that would only require restriping, not major construction.

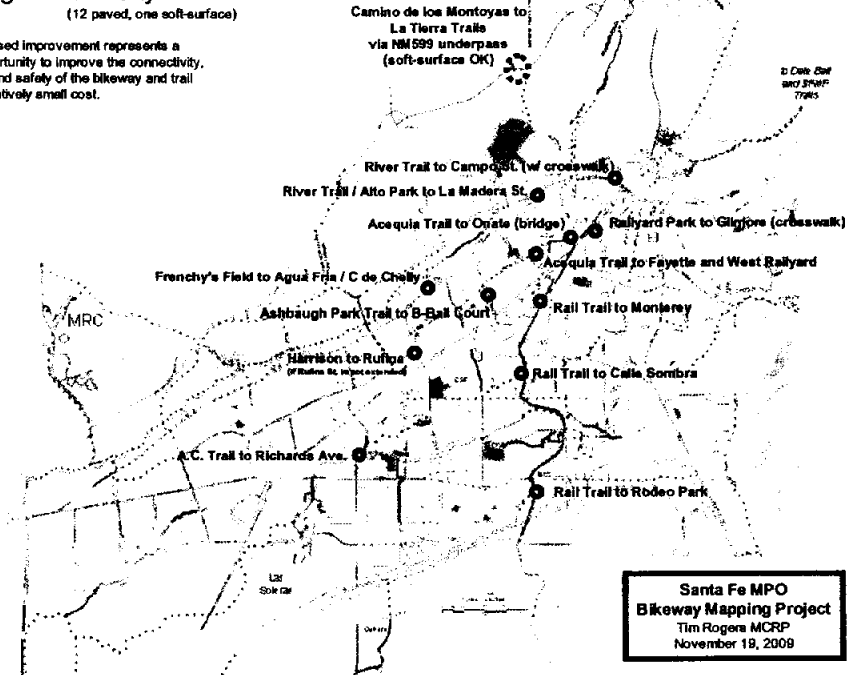
This map is not intended to imply that other needs on major roads such as Agua Fria, W. Alameda, Cerrillos, or St. Francis, should not also be addressed in order to provide safe and convenient access for cyclists.

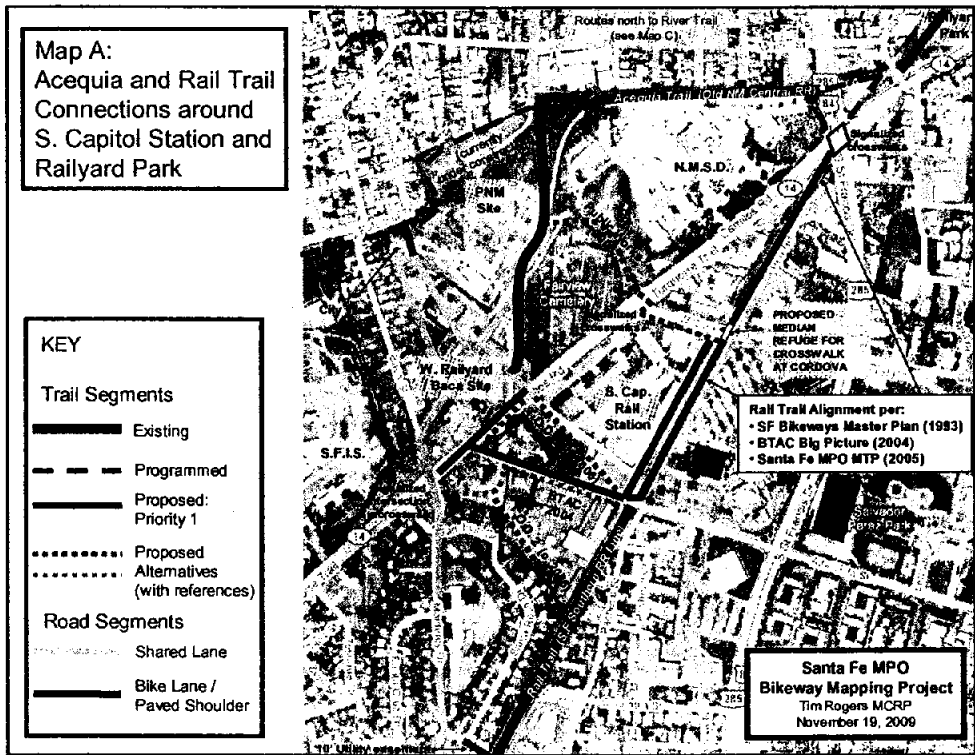
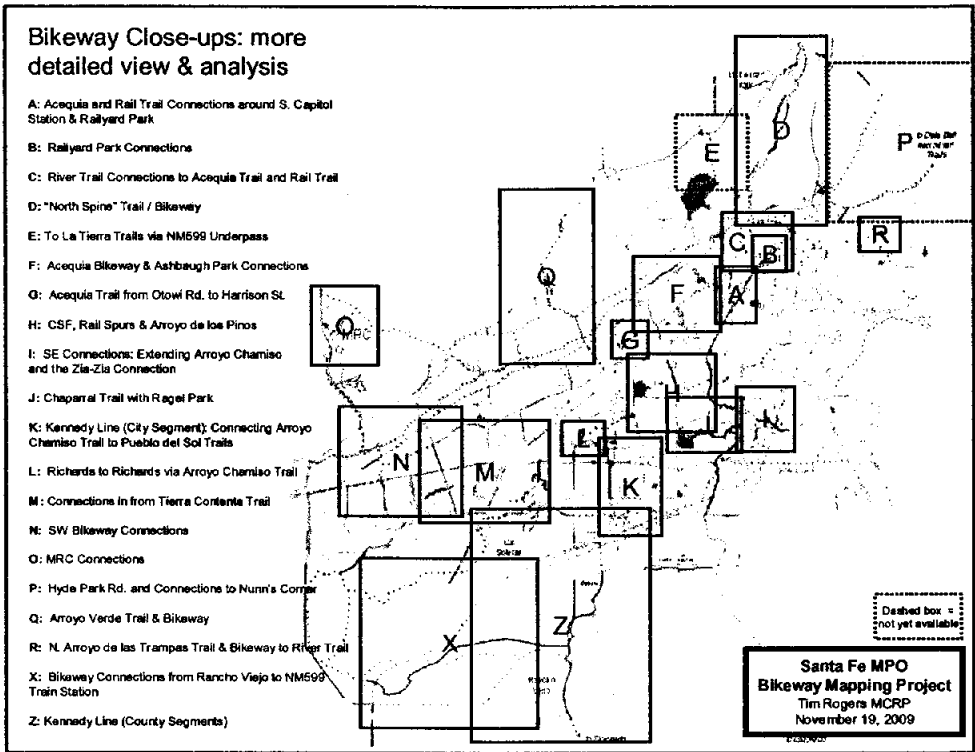


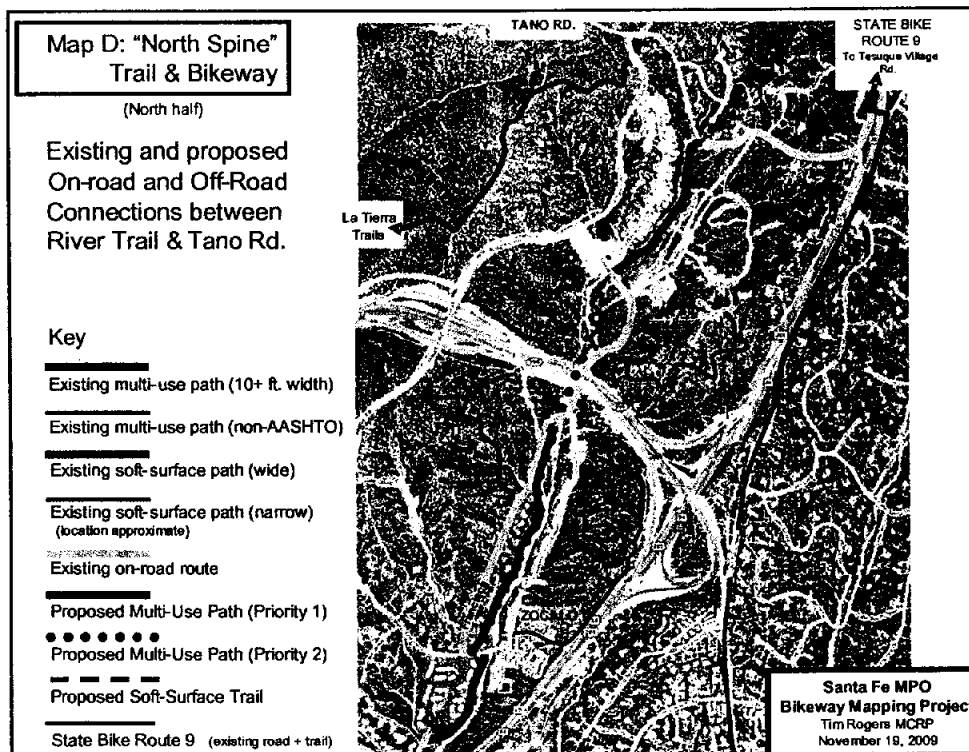
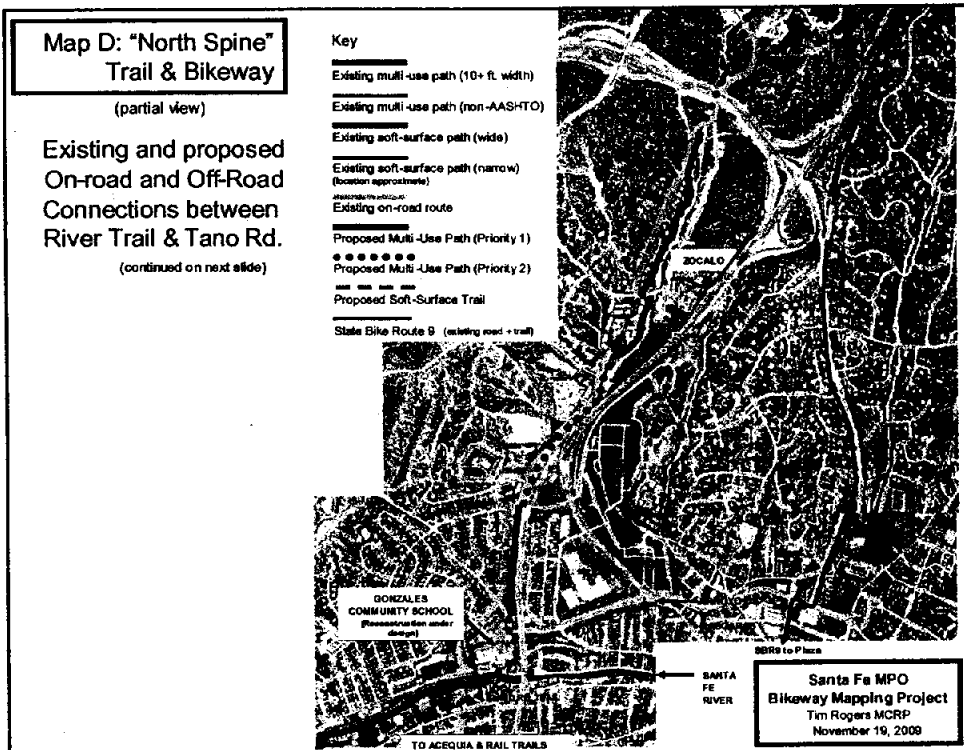
Priority 1 Trail Improvements: Short Segments in City

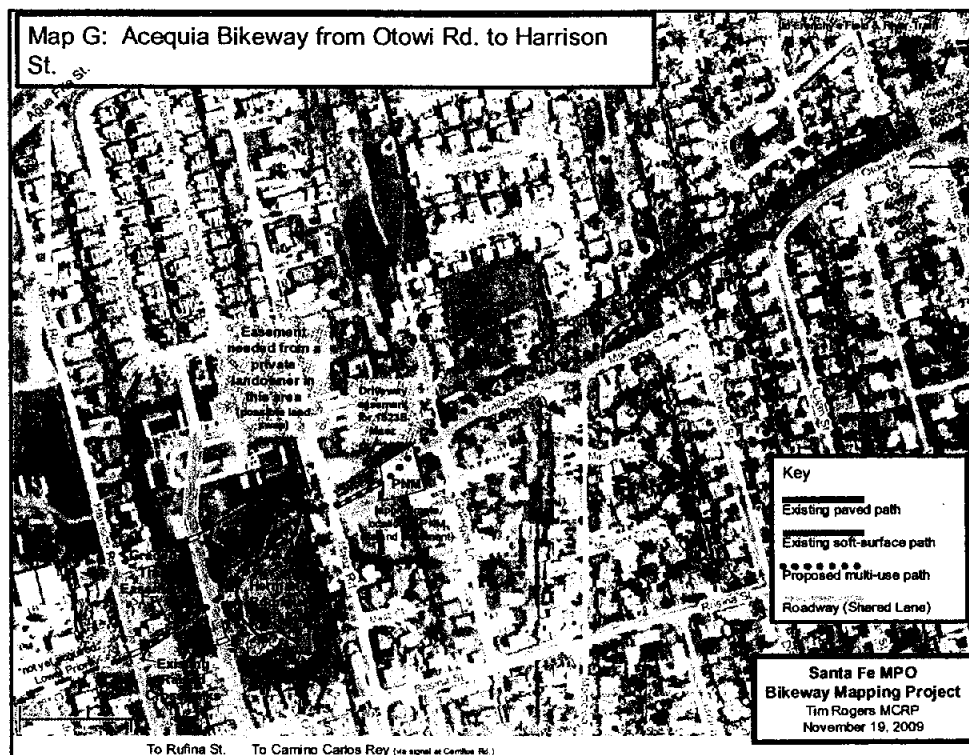
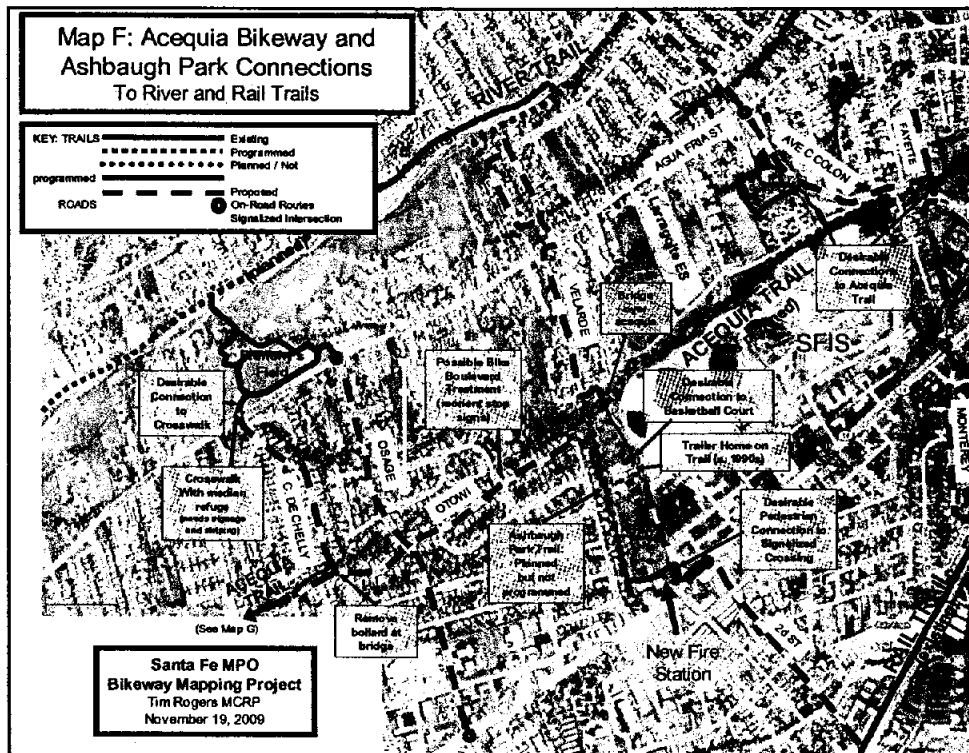
(12 paved, one soft-surface)

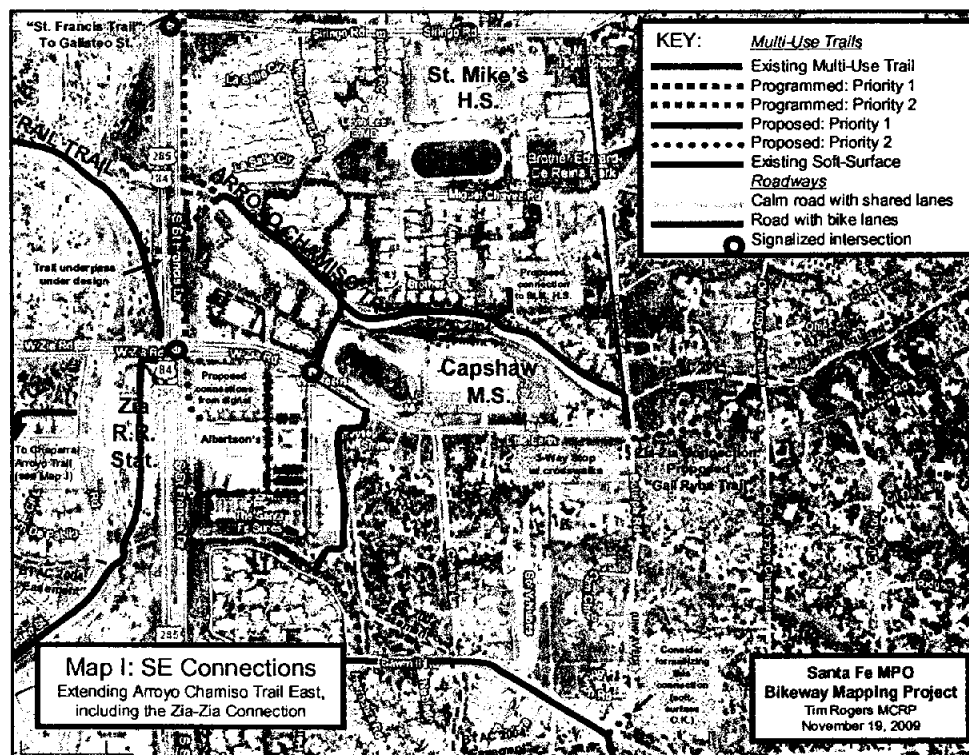
Each proposed improvement represents a significant opportunity to improve the connectivity, convenience, and safety of the bikeway and trail system at a relatively small cost.

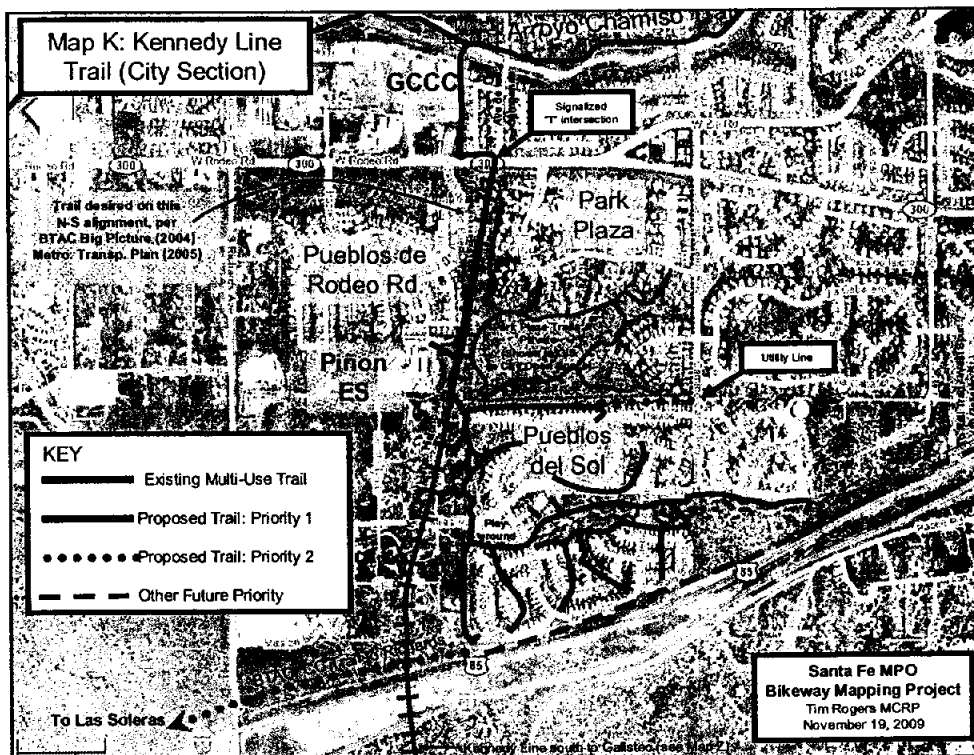
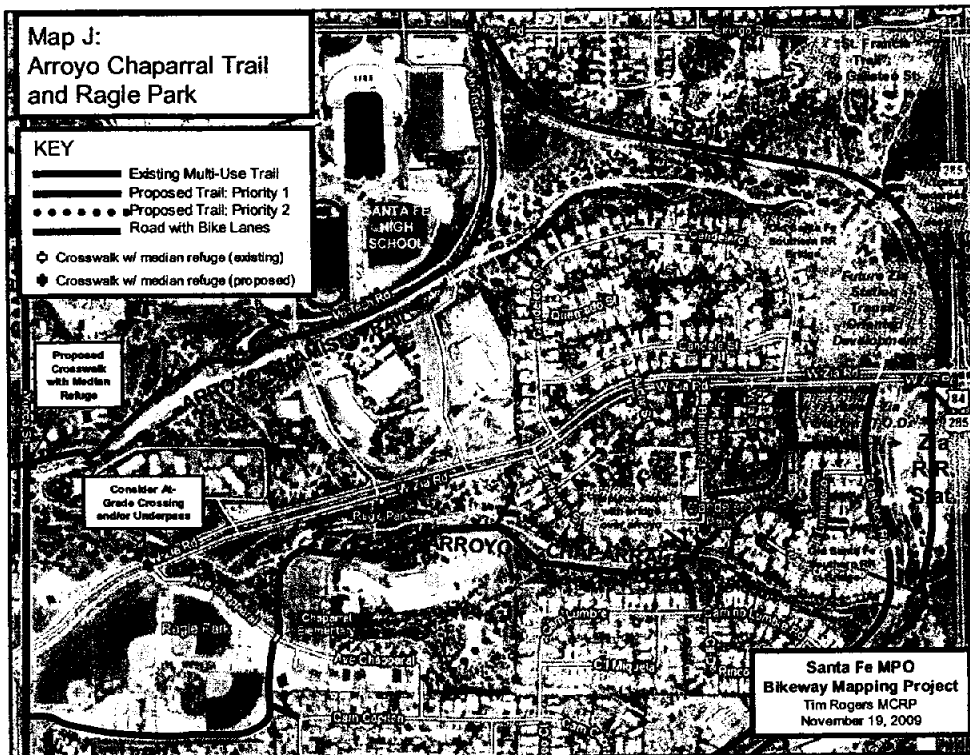


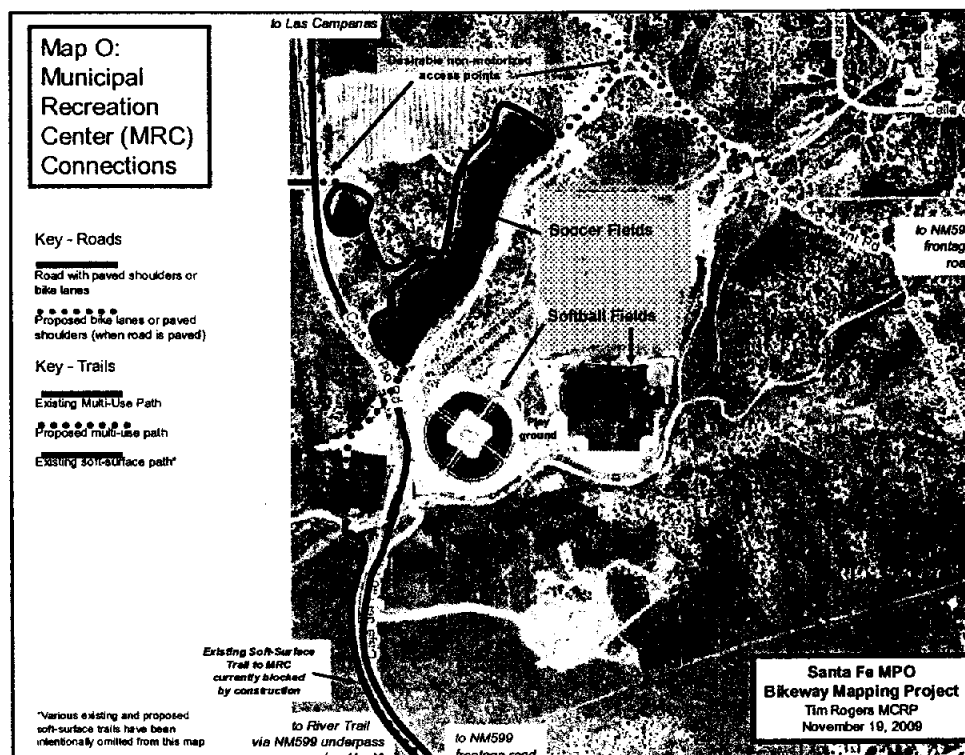
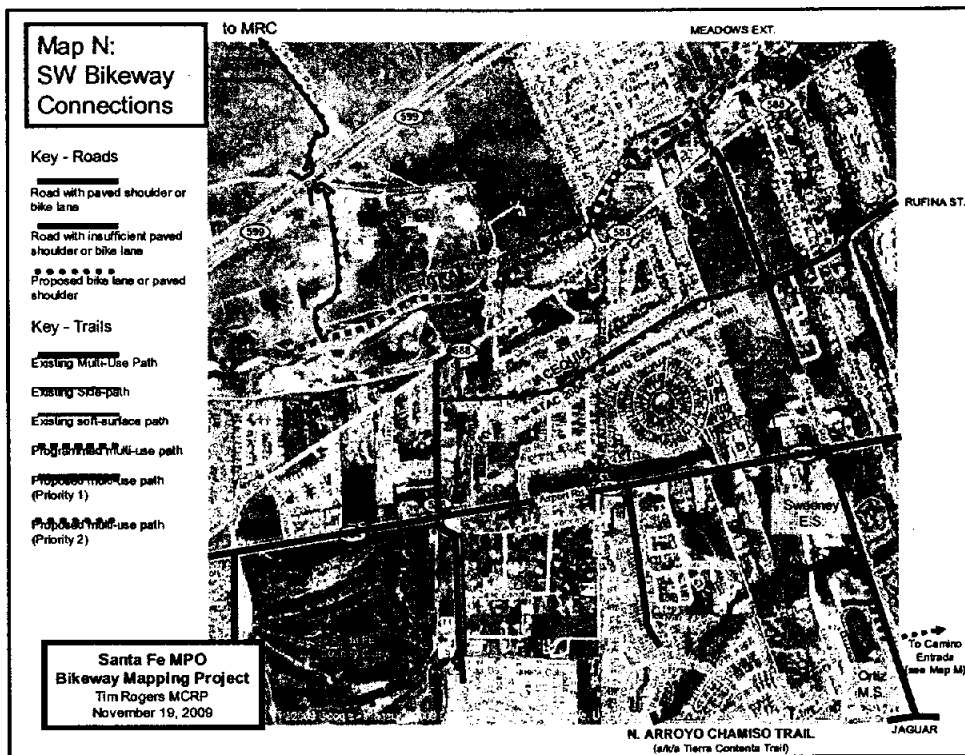


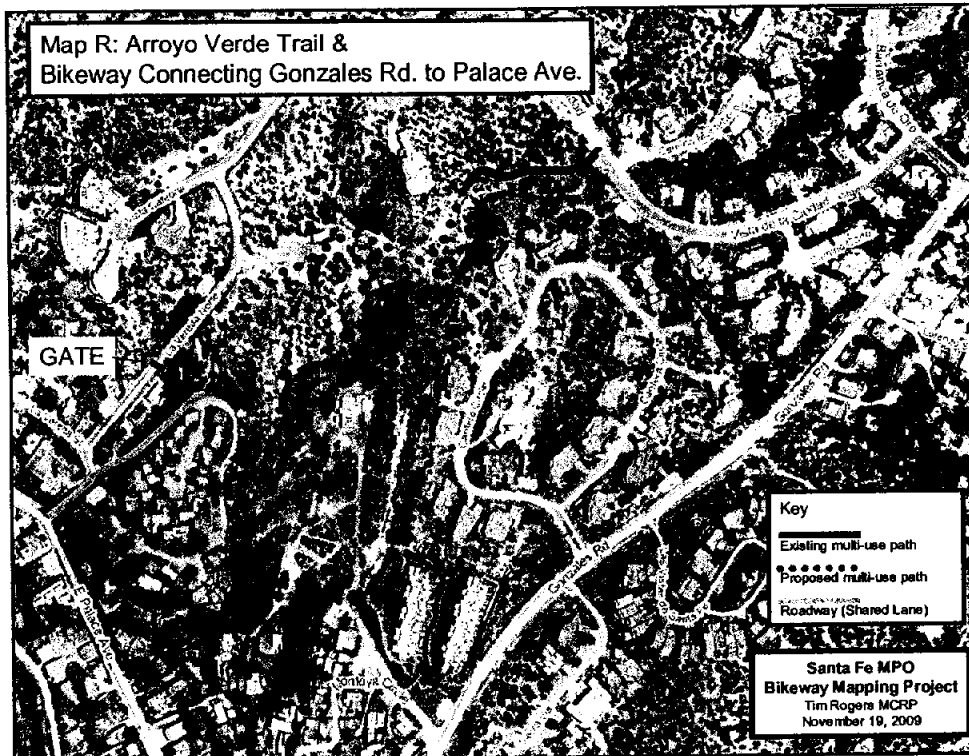
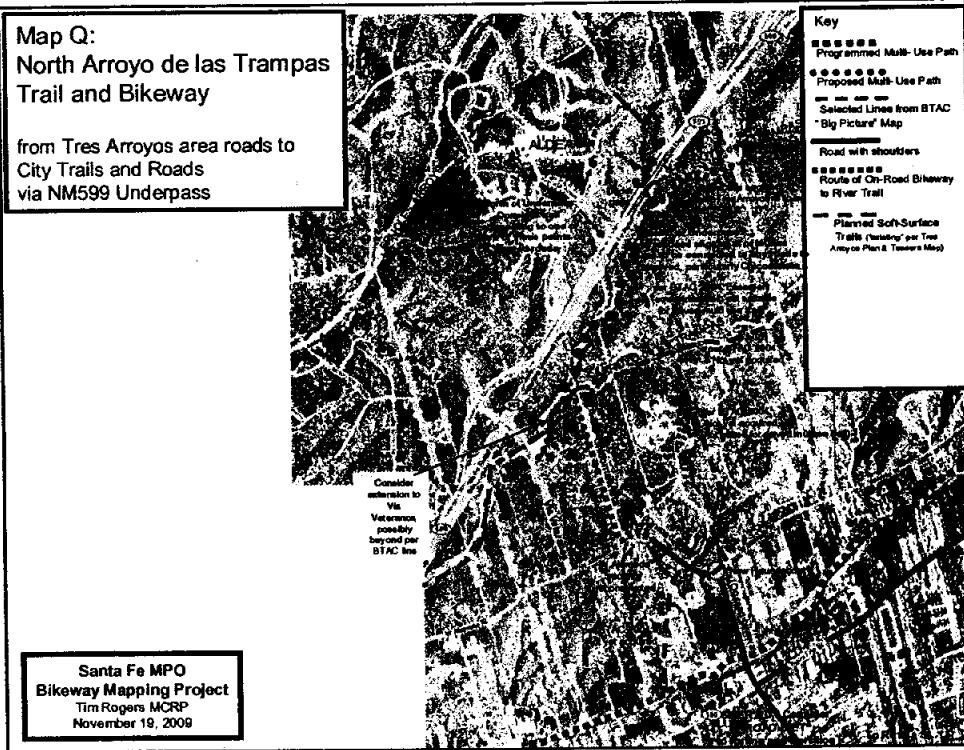


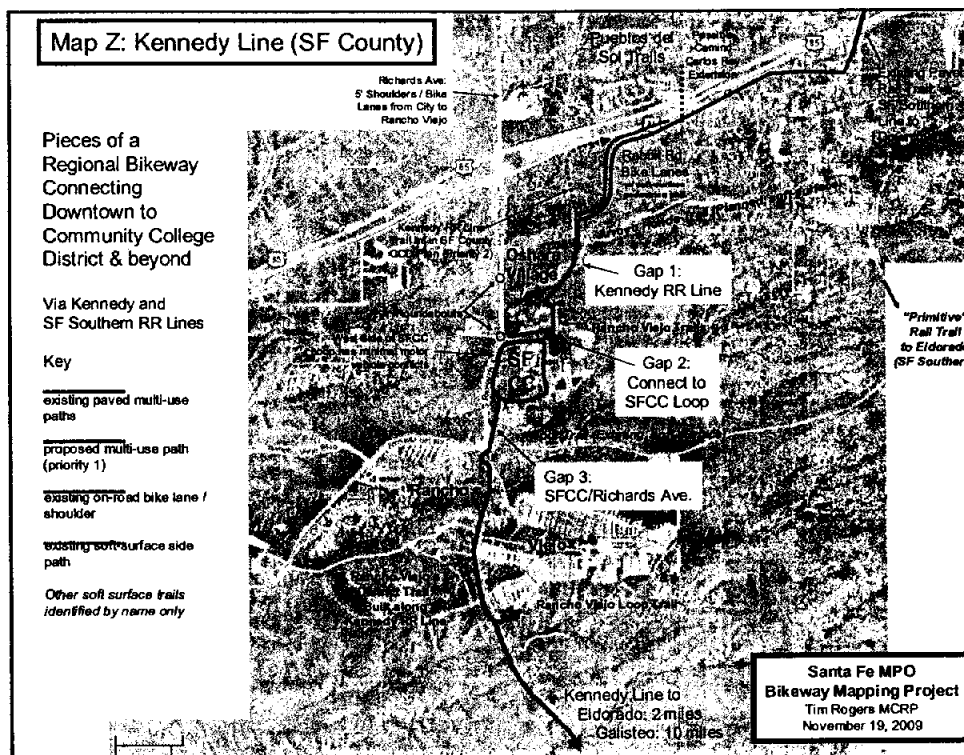
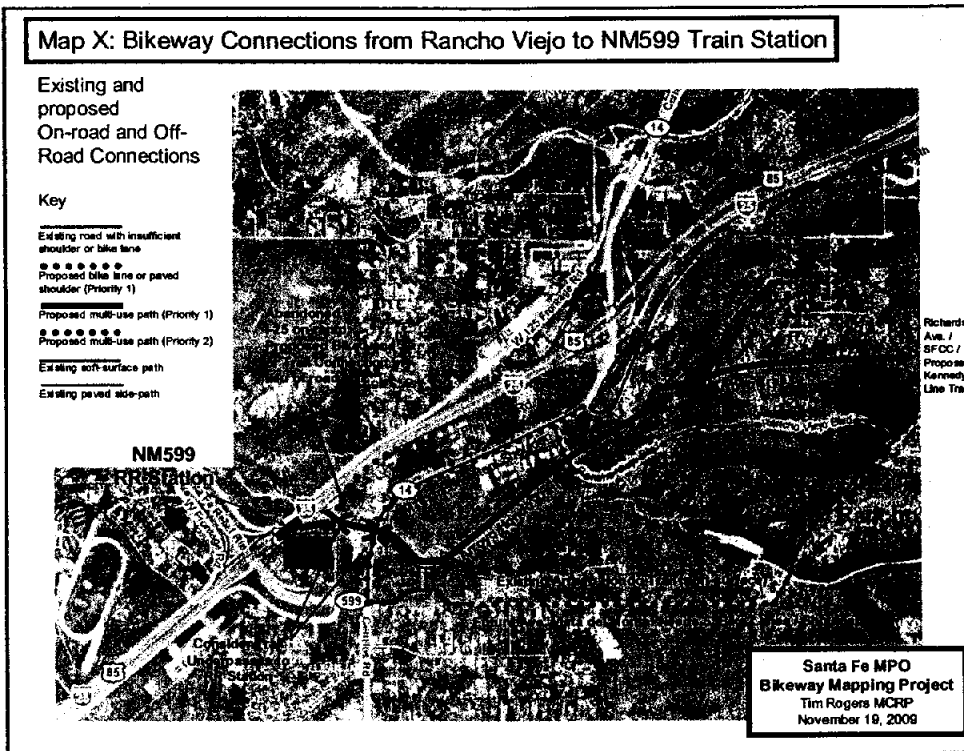


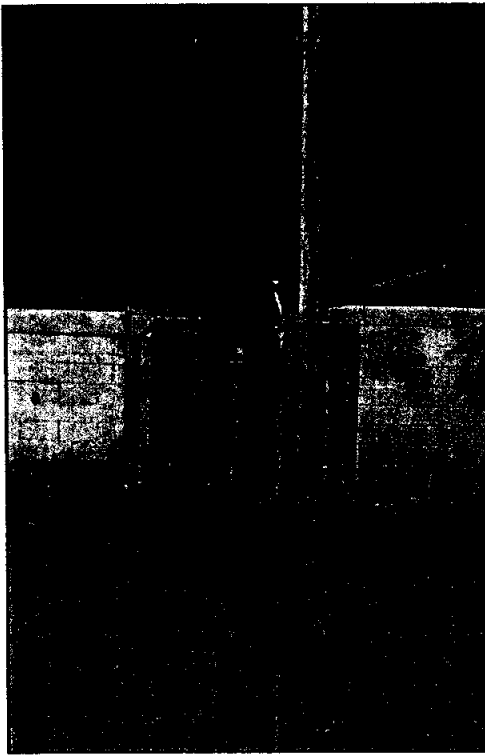












Thank you!

Tim Rogers MCRP
(505) 988-7400
timro@hotmail.com