



Agenda

CITY CLERK'S OFFICE

DATE 3/11/15 TIME 10:23am

SERVED BY Lisa Roach

RECEIVED BY Aliaight

ARCHAEOLOGICAL REVIEW COMMITTEE HEARING

THURSDAY, March 19, 2015 at 4:30 PM

CITY COUNCILORS' CONFERENCE ROOM

CITY HALL - 200 LINCOLN AVENUE, SANTA FE, NM

A. CALL TO ORDER

B. ROLL CALL

C. APPROVAL OF AGENDA

D. APPROVAL OF MINUTES: February 19, 2015
March 5, 2015

E. MATTERS FROM THE FLOOR

F. ACTION ITEMS

- 1) Case #AR-20-11. Suburban Archaeological Review District. Archaeological Monitoring Report for the PNM Fort Marcy 14 Electrical Feeder Project, as an alternative method of compliance with Section 14-3.13(C) of the Santa Fe Land Development Code. Office of Archaeological Studies for PNM. (Lisa Roach)
- 2) Case #AR-17-13. River and Trails Archaeological Review District. Archaeological Monitoring Report for PNM utility upgrades near Old Pecos Trail and East Zia Road, as an alternative method of compliance with Section 14-3.13(C) of the Santa Fe Land Development Code. Office of Archaeological Studies for PNM. (Lisa Roach)
- 3) Case #AR-06-15. River and Trails Archaeological Review District. Archaeological Reconnaissance Report for 0.69 acres at 916 Old Santa Fe Trail, in compliance with Section 14-3.13(C) of the Santa Fe Land Development Code. Ron Winters for William and Aimee La Calle. (Lisa Roach)
- 4) Case AR-03-15. River and Trails Archaeological Review District. Archaeological Monitoring Report for the CenturyLink project on Galisteo Street at San Mateo Road, as an alternative method of compliance with Section 14-3.13(C) of the Santa Fe Land Development Code. Ron Winters for CenturyLink. (Lisa Roach)
- 5) Case AR-07-15. Historic Downtown Archaeological Review District. Archaeological Monitoring Plan for the proposed CenturyLink project on West Marcy Street, as an alternative method of compliance with Section 14-3.13(C) of the Santa Fe Land Development Code. Ron Winters for CenturyLink. (Lisa Roach)

G. MATTERS FROM THE COMMITTEE

H. ADMINISTRATIVE MATTERS AND COMMUNICATIONS

- 1) Request for up to \$10,000 in matching funds from the Archaeology Fund for the Historic Downtown Archaeological Review District Cultural Resources Geodatabase Project – Phase 2, for a proposed CLG Grant from the New Mexico Historic Preservation Division, Department of Cultural Affairs.**

I. ADJOURNMENT

Persons with disabilities in need of accommodations, contact the City Clerk's office at 955-6520 five (5) working days prior to date.

SUMMARY INDEX
ARCHAEOLOGICAL REVIEW COMMITTEE
March 19 , 2015

<u>ITEM</u>	<u>ACTION</u>	<u>PAGE</u>
ROLL CALL AND CALL TO ORDER	Quorum	1
APPROVAL OF AGENDA	Approved [amended]	1
<u>APPROVAL OF MINUTES</u>		
FEBRUARY 19, 2015	Approved [amended]	2
MARCH 5, 2015	Approved [amended]	2
MATTERS FROM THE FLOOR	Information/discussion/approval	2-5
<u>ACTION ITEMS</u>		
<u>CASE #AR-20-11.</u> SUBURBAN ARCHAEOLOGICAL REVIEW DISTRICT. ARCHAEOLOGICAL MONITORING REPORT FOR THE PNM FORT MARCY 14 ELECTRICAL FEEDER PROJECT, AS AN ALTERNATIVE METHOD OF COMPLIANCE WITH SECTION 14-3.13(C) OF THE SANTA FE LAND DEVELOPMENT CODE, OFFICE OF ARCHAEOLOGICAL STUDIES FOR PNM	Postponed indefinitely	5
<u>CASE #AR-17-13.</u> RIVER AND TRAILS ARCHAEOLOGICAL REVIEW DISTRICT. ARCHAEOLOGICAL MONITORING REPORT FOR PNM UTILITY UPGRADES NEAR OLD PECOS TRAIL AND EAST ZIA ROAD, AS AN ALTERNATIVE METHOD OF COMPLIANCE WITH SECTION 14-3.13(C) OF THE SANTA FE LAND DEVELOPMENT CODE, OFFICE OF ARCHAEOLOGICAL STUDIES FOR PNM	Postponed indefinitely	5
<u>CASE #AR-06-15.</u> RIVER AND TRAILS ARCHAEOLOGICAL REVIEW DISTRICT. ARCHAEOLOGICAL RECONNAISSANCE REPORT FOR 0.69 ACRES AT 916 OLD SANTA FE TRAIL, IN COMPLIANCE WITH SECTION 14-3.13(C) OF THE SANTA FE LAND DEVELOPMENT CODE. RON WINTERS FOR WILLIAM AND AIMEE LA CALLE	Approved	5-8

<u>ITEM</u>	<u>ACTION</u>	<u>PAGE</u>
CASE #AR-03-15. RIVER AND TRAILS ARCHAEOLOGICAL REVIEW DISTRICT. ARCHAEOLOGICAL MONITORING REPORT FOR CENTURYLINK PROJECT ON GALISTEO STREET AT SAN MATEO ROAD, AS AN ALTERNATIVE METHOD OF COMPLIANCE WITH SECTION 14-3.13(C) OF THE SANTA FE LAND DEVELOPMENT CODE. RON WINTERS FOR CENTURYLINK	Approved	8-9
CASE #AR-07-15. HISTORIC DOWNTOWN ARCHAEOLOGICAL REVIEW DISTRICT. ARCHAEOLOGICAL MONITORING PLAN FOR THE PROPOSED CENTURYLINK PROJECT ON WEST MARCY STREET, AS AN ALTERNATIVE METHOD OF COMPLIANCE WITH SECTION 14-3.13(C) OF THE SANTA FE LAND DEVELOPMENT CODE	Approved	9-11
<u>ADMINISTRATIVE MATTERS AND COMMUNICATIONS</u>		
REQUEST FOR UP TO \$10,000 IN MATCHING FUNDS FROM THE ARCHAEOLOGY FUND FOR THE HISTORIC DOWNTOWN ARCHAEOLOGICAL REVIEW DISTRICT CULTURAL RESOURCES GEODATABASE PROJECT – PHASE 2, FOR A PROPOSED CLG GRANT FROM THE NEW MEXICO HISTORIC PRESERVATION DIVISION, DEPARTMENT OF CULTURAL AFFAIRS	Approved	11-12
ADJOURNMENT		12

**MINUTES OF THE
CITY OF SANTA FE
ARCHAEOLOGICAL REVIEW COMMITTEE HEARING
City Councilors Conference Room
March 19, 2015**

A. CALL TO ORDER

The Archaeological Review Committee Hearing was called to order by David Eck, Chair, at approximately 4:30 p.m., on March 19, 2015, in the City Councilors Conference Room, City Hall, Santa Fe, New Mexico.

B. ROLL CALL

Members Present

David Eck, Chair
Tess Monahan, Vice-Chair
Gary Funkhouser
James Edward Ivey
Derek Pierce

Others Present

David Rasch, Historic Preservation Division
Zachary Shandler, Assistant City Attorney
Melessia Helberg, Stenographer

NOTE: All items in the Committee packet for all agenda items are incorporated herewith to these minutes by reference, and the original Committee packet is on file in, and may be obtained from, the City of Santa Fe Historic Preservation Division.

C. APPROVAL OF AGENDA

Mr. Rasch said Cases #AR-2011 and #AR-17-13 are to be postponed indefinitely. He noted there is a handout from CyberMesa which can be heard under Matters From the Floor.

MOTION: Jake Ivey moved, seconded by Derek Pierce, to approve the Agenda as amended.

VOTE: The motion was approved unanimously on a voice vote.

D. APPROVAL OF MINUTES – FEBRUARY 19, 2015 AND MARCH 5, 2015

The following corrections were made to the minutes of February 19, 2015:

Page 3, paragraph 4, line 7, correct as follows: "...single ~~asset~~ assay samples..."

Page 4, paragraph 2 under Derek Pierce, line 1, correct as follows, "...Chief of the San Juan and of the Mescalero...."

Page 8, paragraph 15, line 5, correct as follows: "...is ~~happig~~ happening south..."

MOTION: Tess Monahan moved, seconded by Gary Funkhouser, to approve the minutes of the meeting of February 19, 2015, as amended.

VOTE: The motion was approved unanimously on a voice vote.

The following corrections were made to the meeting of March 5, 2015:

Page 3, paragraph 9, line 3, correct as follows: "...those ~~tract~~ track lines..."

Page 5, paragraph 1, line 6, correct as follows: "...requires ~~trench (?)~~ Trenchless work..."

Page 10, paragraph 8, correct as follows: "...didn't ~~care~~ dare."

Page 17, paragraph 1, line 3, correct as follows: "...in this ~~pulpit~~ pull pit..."

Global change in the report "pulpit," to "pull pit."

MOTION: Derek Pierce moved, seconded by Gary Funkhouser, to approve the minutes of the meeting of March 5, 2015, as amended.

VOTE: The motion was approved unanimously on a voice vote.

E. MATTERS FROM THE FLOOR

A copy of a letter dated March 13, 2015, to Lisa Roach and Michelle Ensey, with attachment, from Jessica A. Badner, Project Director, Office of Archaeological Studies, regarding: 1. Compliance with conditions of approval for Santa Fe Fiber CIP Project (SFF) monitoring project (AR-22-14), submission of pull pit map for the area between Vault #13 and #14 along Segment 6, and 2. Modification to Segment 5 plans previously approved by ARC, is incorporated herewith to these minutes as Exhibit "1."

Recusal: Gary Funkhouser recused himself from this discussion because of his work with the Highway Department and the potential for conflict in this case.

Mr. Rasch said the letter and attachments [Exhibit "1"] were received via email this morning about 9:00 a.m. He said they pertain to the final remaining matter for additional trenching or test pits along St. Francis for the CyberMesa project.

Ms. Badner said they received the letter from Ms. Roach that integrated what needs to be done to gain final clearance, one of which is a map of the proposed Vault/Test Pit locations on St. Francis Drive which are attached to the letter in Exhibit "1." She said, "The two additional Vaults which will be excavated are SSF Vaults #13-D and #13-C, located between Vaults 13 and 14. So those are the proposed test pit locations, and by test pit we mean mechanical excavation, as far as I understood, and I just wanted to be out front with you about that. And that is what was requested."

Ms. Badner continued, "The other matter that we went ahead and included on this is that I received a modification from CyberMesa for the plan that formerly was Segment 5, or the southern part of Segment 5 along the Santa Fe Railyard segment. And the reason that CyberMesa went ahead and changed some of the plan that they were going ahead with is to keep heavy equipment out of, I believe it's a 25 foot corridor near the railyard tracks to mitigate disruption of rail operations."

Ms. Badner continued, "In order to do that, they proposed putting a pull pit within the boundaries of LA146441, which is an eligible site, but the eligibility of that site is based on the feeling of the railyard. So the reason the site was deemed eligible by [inaudibility] was because of the delineability of the track alignments and the linear feeling of the Railyard Corridor. The original tracks that were there at the time that OAS excavated have since been covered and cased in concrete. The track line is still visible, but there's concrete or asphalt surrounding those tracks. This pull pit would not interfere with those tracks, and I don't believe, I don't know, but I'm pretty sure that there's no subsurface to impact. So it's not likely that it is going to hit anything that was deemed significant by us."

Ms. Badner continued, "The other essential impact is to the Acequia Madre, LA 120957. And as the map here indicates, it is not within the boundary of the historic acequia. So it's not within the boundary of the existing acequia or the perimeter around that Acequia that was deemed significant. So the slice you see here in this map will not impact the acequia. There will be an underground bore that goes underground from the drill rig location, and will go subsurface, clearing the boundaries of the acequia 9-10 feet below the surface, and come out on the other side of Alarid Street."

Mr. Moody said, "Just to clarify, the southernmost rig on this drawing will be heading to the northeast, and the second southernmost drilling location will also be heading to the northeast, and they will merge at the southernmost splice tip. And at that merge, the second southernmost borer

will continue on to the center, the midpoint of this segment on this illustration and replace what started at the southernmost thing. The reasoning behind this from the utility contractor's perspective is that he has a maximum practical distance of a bore of about 400 feet. The overall distance here is about 1,000 ft. His original plan was to mobilize from the north in one location and head southwest, in the second location heading southwest, in the third location heading southwest, with heavy equipment within the safety corridor of the rail. This work-around will allow him never to get equipment within that 25 feet, essentially by meeting in the middle of the segment.

Chair Eck thanked him for that clarification because "I was having trouble with the little green arrows."

Ms. Badner said she has nothing further to add.

Chair Eck said, "We were presented with the information we requested, so we are on the threshold of full and complete approval of #AR-22-14."

Tess Monahan

Ms. Monahan said she has no additional comments.

Derek Pierce

Mr. Pierce said, "I am fine with this. In the first matter, they put in the Vaults exactly as instructed, as we asked. And on the second, the modifications don't pose any greater risks than what we approved the first time around, so, I'm good."

Jake Ivey

Mr. Ivey said, "I'm good."

Chair Eck

Chair Eck said, "I am quite pleased. The hard part will be formulating the motion."

MOTION: Tess Monahan moved, seconded by Derek Pierce, to give final approval of Case #AR-22-14, as fulfilling our request for more information in its previous presentation to this Committee on March 5, 2015, and to forward our approval in this Case to the State Historic Preservation Division.

DISCUSSION: Ms. Helberg inquired about action on this case since it isn't posted for action, and Mr. Rasch said Zachary Shandler, Assistant City Attorney, said to move forward.

Mr. Rasch said, "My question is, besides this additional information that was requested, did you already take action on the rest of the project."

Chair Eck said conditional approval was given, pending receiving this information, on March 5, 2015.

VOTE: The motion was approved on a voice vote with Tess Monahan, Derek Pierce and Jake Ivey voting in favor of the motion, no one voting against and Gary Funkhouser recused.

F. ACTION ITEMS

- 1) **CASE #AR-20-11. SUBURBAN ARCHAEOLOGICAL REVIEW DISTRICT. ARCHAEOLOGICAL MONITORING REPORT FOR THE PNM FORT MARCY 14 ELECTRICAL FEEDER PROJECT, AS AN ALTERNATIVE METHOD OF COMPLIANCE WITH SECTION 14-3.13(C) OF THE SANTA FE LAND DEVELOPMENT CODE, OFFICE OF ARCHAEOLOGICAL STUDIES FOR PNM. (LISA ROACH)**

This case is postponed indefinitely.

- 2) **CASE #AR-17-13. RIVER AND TRAILS ARCHAEOLOGICAL REVIEW DISTRICT. ARCHAEOLOGICAL MONITORING REPORT FOR PNM UTILITY UPGRADES NEAR OLD PECOS TRAIL AND EAST ZIA ROAD, AS AN ALTERNATIVE METHOD OF COMPLIANCE WITH SECTION 14-3.13(C) OF THE SANTA FE LAND DEVELOPMENT CODE, OFFICE OF ARCHAEOLOGICAL STUDIES FOR PNM. (LISA ROACH)**

This case is postponed indefinitely. .

- 3) **CASE #AR-06-15. RIVER AND TRAILS ARCHAEOLOGICAL REVIEW DISTRICT. ARCHAEOLOGICAL RECONNAISSANCE REPORT FOR 0.69 ACRES AT 916 OLD SANTA FE TRAIL, IN COMPLIANCE WITH SECTION 14-3.13(C) OF THE SANTA FE LAND DEVELOPMENT CODE. RON WINTERS FOR WILLIAM AND AIMEE LA CALLE. (LISA ROACH)**

Chair Eck noted there is a Memorandum in the Committee packet regarding this Case.

BACKGROUND & SUMMARY

At the request of Rochelle Abeyta of CenturyLink, the consultant conducted archaeological monitoring of the installation of a new fiber optic line, as an alternative method of compliance with the requirements of performing Reconnaissance in the River and Trails Archaeological Review District. The project entailed utilization of 186 linear feet of existing conduit, the excavation of three hand holes, and the employment of a combination of trenching and boring for 665 linear feet along Galisteo Street south of San Mateo Road. Although the project encountered numerous existing utility lines, few artifacts and no intact cultural deposits or features were found. No further investigation is recommended.

STAFF RECOMMENDATION

Staff recommends approval of this report as an alternative method of compliance with Section 14-3.13(C).

Ron Winters said the trail segment in that area is now in an alleyway between the properties and if you look just to the east, you can see the dirt, and that is what Pitel and Tigges recorded as the original Santa Fe segment. He said, "It's all around it, but it's not on the property."

Mr. Pierce said it is obvious, both in the parts to the north and the alley to south that they're kind of an island in between.

Tess Monahan

Ms. Monahan said she has no comments.

Gary Funkhouser

Mr. Funkhouser said he has no comment.

Derek Pierce

Mr. Pierce said he has no comment, except that he loves this house. He said, "If I were not a starving archaeologist, I would have bought it."

Mr. Winters said the addition in back works and it doesn't look like an add-on, and looks as if it was a part of the house originally.

Jake Ivey

Mr. Ivey said in Figure #9, he has both a scale and a ceramic scale.

Chair Eck

Chair said, "The map of Pitel and Tigges, Figure 5 on page 26, does nicely show that alignment that is in the alley. It also shows the nice alignment across the street in part. Are my eyes deceiving me, or does it not show a very short little alignment on the property immediately adjacent to the southeast on same side of Old Santa Fe Trail. Responding to Mr. Winters he said, "It's immediately adjacent to the northeast corner of the tract which is southeast of said tract, and it looks like there is a big piece of an alignment there on our copy, which would be along the front of the property in question."

Mr. Winters said it is on the next property over and he recorded that.

Mr. Winters said, "In fact, if you look at the photos. Pitel and Tigges didn't see it, I didn't see it, but if you look at the property photos and you see how heavily landscaped the built environment is, and in fact, 'there's the front yard of the property, it's all gravel and landscaped along that eastern edge. But yes, it ends at that wall. So I think it was destroyed early on."

Chair Eck said, "It's drawing on ancient history, but I think that something like 16 years ago, you could see it their front yard, before the landscaping happened, and in fact before some of the modification of that wall we see in the picture. I think that's exactly where the alignment was. I cruised the street looking for a remnant, and at that point, I lost the ability to see it where I thought I used to be able to see it, but it's still obviously on the property next door."

Mr. Winters said, "Right, it goes right up.... well actually I will say that there is a driveway that comes into that property and that's where it ends, at the driveway and not at the wall."

Ms. Monahan said, "I used to own the property at 920 and I remember seeing the swales there, and Camino Cacto was right there, and on either side there was no indication that I ever saw, but that was a long long time ago."

Mr. Winters said he recorded that segment.

Chair Eck asked Mr. Winters if he put an easement there, and Mr. Winters said yes.

MOTION: Tess Monahan moved, seconded by Derek Pierce, with respect to Case #AR-06-15, to approve the Archaeological Reconnaissance Report for 0.69 acres at 916 Old Santa Fe Trail, as requested by Ron Winters for William and Aimee La Calle, as being an alternate method of compliance with Section 14-3.13(C) of the Santa Fe Land Development Code.

VOTE: The motion was approved unanimously on a voice vote.

- 4) **CASE #AR-03-15. RIVER AND TRAILS ARCHAEOLOGICAL REVIEW DISTRICT. ARCHAEOLOGICAL MONITORING REPORT FOR CENTURYLINK PROJECT ON GALISTEO STREET AT SAN MATEO ROAD, AS AN ALTERNATIVE METHOD OF COMPLIANCE WITH SECTION 14-3.13(C) OF THE SANTA FE LAND DEVELOPMENT CODE. RON WINTERS FOR CENTURYLINK. (LISA ROACH)**

Chair Eck noted there is a Memorandum in the Committee packet regarding this Case.

BACKGROUND & SUMMARY

At the request of Plan A Architecture on behalf of William and Aimee La Calle, the archaeological consultant performed archival research and visual survey of 0.69 acres at 916 Old Santa Fe Trail for the purpose of archaeological clearance in advance of residential improvements to the property, including a new portal, landscaping features, equipment room, and a swimming pool. The property was found to hold no evidence of the historic Santa Fe Trail, although extant remnants have been documented nearby. No further investigation is recommended.

STAFF RECOMMENDATION

Staff recommends approval of this report in compliance with Section 14-3.13(C).

Ron Winters said, "First, I wanted to comment that there was a lot of disturbance again with the utilities, but also in the cut and fill along the road. I definitely looked for any evidence of the buried roadway, Galisteo Road. The other thing I would say is I felt comfortable, by the end of the project, with the approval of the boring. We really didn't disturb anything. Had I found a lot of material in the trenching, I might have been concerned, because you saw very few artifacts and so I think we were justified in boring the sections that we did."

Tess Monahan

Ms. Monahan said she has no additional comments.

Gary Funkhouser

Mr. Funkhouser said he has no comment.

Derek Pierce

Mr. Pierce said he has no comment.

Jake Ivey

Mr. Ivey said he has no comment.

Chair Eck

Chair Eck said he has no comment.

MOTION: Tess Monahan moved, seconded by Gary Funkhouser, with respect to Case #AR-03-15, to approve the Archaeological Monitoring Report for the CenturyLink project on Galisteo Street at San Mateo Road, as requested by Ron Winters for CenturyLink, as being an alternate method of compliance with Section 14-3.13(C) of the Santa Fe Land Development Code.

VOTE: The motion was approved unanimously on a voice vote.

- 5) **CASE #AR-07-15. HISTORIC DOWNTOWN ARCHAEOLOGICAL REVIEW DISTRICT. ARCHAEOLOGICAL MONITORING PLAN FOR THE PROPOSED CENTURYLINK PROJECT ON WEST MARCY STREET, AS AN ALTERNATIVE METHOD OF COMPLIANCE WITH SECTION 14-3.13(C) OF THE SANTA FE LAND DEVELOPMENT CODE. RON WINTERS FOR CENTURYLINK. (LISA ROACH)**

Chair Eck noted there is a Memorandum in the Committee packet regarding this Case.

A copy of a revised page 4 with Engineer's comments: Location Map – Figure 2: Work Location Map and Figure 3: Plan/Profile Subsurface Trenching is incorporated herewith to these minutes as Exhibit "2."

BACKGROUND & SUMMARY

At the request of Rochelle Abeyta of CenturyLink, the archaeological consultant has prepared an archaeological monitoring plan for the proposed installation of subsurface fiber optic cable beginning at the southeast corner of West Marcy Street and an alleyway between Lincoln and Washington Avenues as an alternative method of compliance with Section 14-3.13(C). The project will involve excavation of a handhole at the origination point, then trenching 42 linear feet across Marcy Street and 68 linear feet along the alleyway to a second proposed handhole. Fiber optic cable will then be installed and the trench backfilled. The archaeologist proposes to examine the trench fill and walls for evidence of cultural resources, document any found and report these to the Committee.

STAFF RECOMMENDATION

Staff recommends approval of this report in compliance with Section 14-3.13(C).

David Rasch said he has no additional comment.

Ron Winters said, "I just wanted to say the handout I gave all of you [Exhibit "2."]..... after I submitted the Monitoring Plan, I received the Engineer's Drawings, and I always like to include those so you can see exactly where it's going. And so it is just a revised page 4 with the Engineer's drawings."

Tess Monahan

Ms. Monahan thanked him for the additional information, saying otherwise she has no comment.

Gary Funkhouser

Mr. Funkhouser said he has no comment.

Derek Pierce

Mr. Pierce said he has no comment.

Jake Ivey

Mr. Ivey said he has no comment.

Chair Eck

Chair Eck said he has no comment.

MOTION: Tess Monahan moved, seconded by Derek Pierce, with respect to Case #AR-07-15, to approve the Monitoring Plan for the proposed CenturyLink project on West Marcy Street, as requested by Ron Winters for CenturyLink, as being an alternate method of compliance with Section 14-3.13(C) of the Santa Fe Land Development Code.

VOTE: The motion was approved unanimously on a voice vote.

G. MATTERS FROM THE COMMITTEE

The Committee discussed possible nominations for the upcoming Heritage Preservation Awards.

Mr. Rasch said the nomination forms are available at the website.

H. ADMINISTRATIVE MATTERS AND COMMUNICATIONS

- 1) **REQUEST FOR UP TO \$10,000 IN MATCHING FUNDS FROM THE ARCHAEOLOGY FUND FOR THE HISTORIC DOWNTOWN ARCHAEOLOGICAL REVIEW DISTRICT CULTURAL RESOURCES GEODATABASE PROJECT – PHASE 2, FOR A PROPOSED CLG GRANT FROM THE NEW MEXICO HISTORIC PRESERVATION DIVISION, DEPARTMENT OF CULTURAL AFFAIRS.**

David Rasch said State Historic Preservation didn't spend all of its CLG grant funds, and we have been invited to apply for more funds. He said Lisa Roach expanded the program we're already working on to create the Geodatabase, and this will improve that project even more than what we're doing already. We also are requesting matching funds from the Archaeological Review Committee in the amount of \$7,000 to go to contract services, and \$3,000 to help pay for a server for the new Geodatabase.

Mr. Funkhouser asked if this will extend the time frame for the project.

Mr. Rasch said no, it is all due by the end of September. He said this has been discussed, and everyone is comfortable with it. He said Earth Analytic wanted to do this section initially, and we didn't have the budget for it. It is fortuitous that HPD contacted us to give us this opportunity for additional funds.

MOTION: Tess Monahan moved, seconded by Gary Funkhouser, to approved the request to submit a CLG Grant application to the New Mexico Historic Preservation Division, Department of Cultural Affairs, for additional funds for the Historic Downtown Archaeological Review District Cultural Resources Geodatabase Project, Phase 2.

VOTE: The motion was approved unanimously on a voice vote.

MOTION: Gary Funkhouser moved, seconded by Jake Ivey, to approve the request for up to \$10,000 from the Archaeology Fund for the Historic Downtown Archaeological Review District to be used for the Cultural Resources Geodatabase Project, Phase 2.

VOTE: The motion was approved unanimously on a voice vote.

Mr. Pierce said one of the External Policies said we prefer to keep at least \$20,000 in the Archeology Fund, and asked the balance of that Fund.

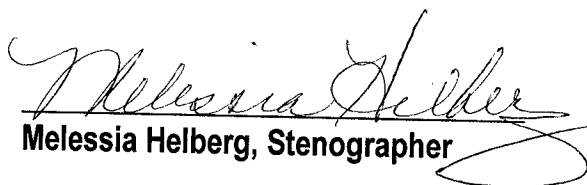
Chair Eck said after this \$10,000 is granted there will be approximately \$107,000 in the fund.


I. ADJOURNMENT

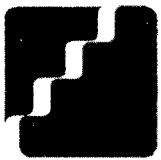
There was no further business to come before the Committee.

MOTION: Jake Ivey moved, seconded by Derek Pierce, to adjourn the meeting.

VOTE: The motion was approved unanimously on a voice vote, and the Committee was adjourned at approximately 5:15 p.m.


Melessia Helberg, Stenographer

 16 April 2015
David Eck, Chair



Office of Archaeological Studies

Museum of New Mexico ~ Preserving Our Heritage Since 1909

March 13, 2015

Lisa Roach
Archaeological Review Committee
City of Santa Fe Historic Preservation Division
200 Lincoln Avenue
Santa Fe, NM 87501

And

Michelle Ensey
NM Historic Preservation Division
Bataan Memorial Building, Suite 236
407 Galisteo Street
Santa Fe, NM 87501

RE: 1) Compliance with conditions of approval for Santa Fe Fiber CIP Project (SFF) monitoring project (AR-22-14). Submission of pull pit map for the area between Vault #13 and #14 along Segment 6. And
2) Modification to Segment 5 plans previously approved by ARC.

Dear Ms. Roach and Ms. Ensey,

In compliance with conditions stipulated by ARC for approval of Santa Fe Fiber CIP Project (SFF) monitoring project (AR-22-14) OAS is submitting plans that detail locations of the additional pull pits numbered 13.A and 13.B. As stipulated, these pull pits will be mechanically excavated as 1 x 1 m test units in order to examine stratigraphy in this Segment 6 of the project area. Please see Figure 1.

Since the March 5th meeting with ARC Cyber Mesa has communicated to OAS the need to modify plans for the southern section of Segment 5 as presented in the monitoring plan conditionally approved by ARC. These changes are undertaken to avoid impacting rail operations. Chaparral, the drilling contractor, has developed a plan to bore from both ends of the bike path into its midpoint. Chaparral's approach eliminates all need for vehicles, equipment, personnel, asphalt cut-&-patch, excavation, spoils etc. to come within 25' of the rail centerline at any time, thus obviating railroad scheduling, flagging and safety issues and allowing unimpeded public access to the bike route.

Modifications to the approved plan include placement of a hand-excavated splice trench (Splice #1) placed at the location of the intersection of the bore south of Vault #9. Because of the distance of the two boring runs, an additional splice trench (Splice #2) would be necessary about 100' northeast of Alarid Street. This latter location would splice two conduits merging into the same alignment from the southwest. One would begin from a drill rig located on the other side of Alarid Street and end at the splice. The other would begin from a drill rig located at the southwest end of the gabion wall and continue all the way to the midpoint splice.

Modifications to Segment 5 are mapped in Figure 2. This new plan has the potential to impact LA 153441 (AT&SF track alignments) and is located in close proximity to LA 120957 (Acequia Madre) but OAS believes the nature of the disturbance is unlikely to effect either of the site's integrity.

Exhibit "1"

LA 153441: Although a pull pit installed just south of Vault 9 is located within the bounds of LA 153441 the excavation in question will be placed in an area of preexisting utilities installed during previous Railyard construction. LA 153441 is recommended as significant under criterion d based on the effect the tracks and rail corridor have had on the development of the neighborhood and their contribution to its feeling. The site is not recommended based on particular construction details, length or orientation of any particular track alignment . The track alignment s located within the boundaries of LA 153441 has been preserved as parallel tracks imbedded within the asphalt parking lot and pedestrian trail. OAS believes that any excavation will not affect this arrangement.

LA 120957: The proposed additional splice trench (Splice #2) is located 54 ft. north of LA 120957 boundaries. In itself, Splice #2 should not impact the acequia. Based on the construction requirements of the boring equipment Splice #2 may need to be moved north of its mapped location in order to ensure the horizontal bore clears the entire depth and width of LA 120957.

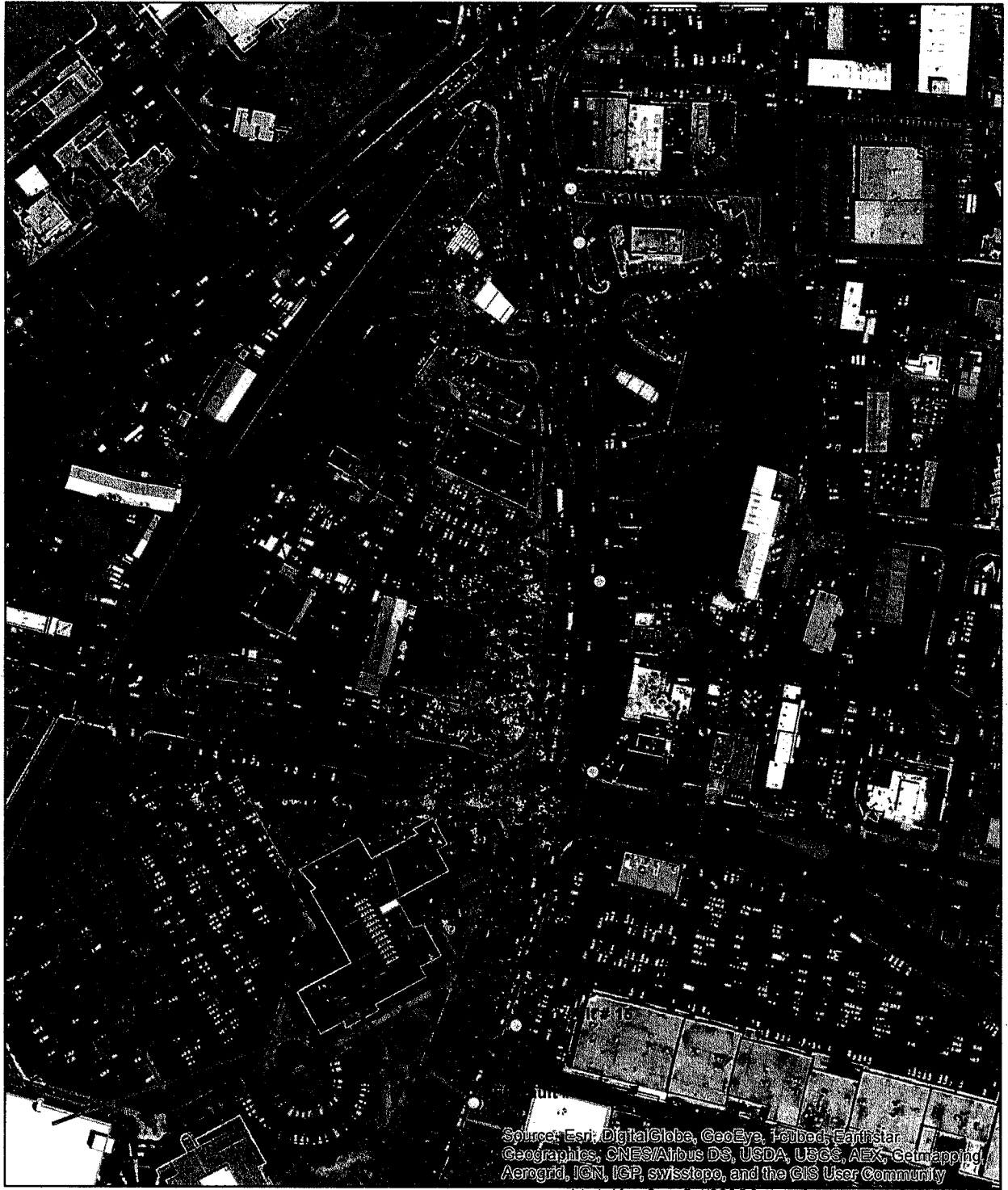
OAS will monitor and report both segments based on stipulations of the conditionally approved monitoring plan for Santa Fe Fiber CIP Project (SFF) monitoring project (AR-22-14) and guidelines summarized by the March 12, 2015 letter sent by Ms. Roach to OAS regarding the March 5, 2015 hearing.

If you have any questions of or concerns please do not hesitate to contact me at 505-476-4421 or jessica.badner@state.nm.us.

Best



Jessica A. Badner
Project Director
Office of Archaeological Studies



Legend

- | | |
|--------------------------|----------------------|
| ○ Communications Manhole | ● Manhole |
| ○ Existing SF Fiber duct | --- Existing conduit |
| ○ State Manhole | — New conduit |

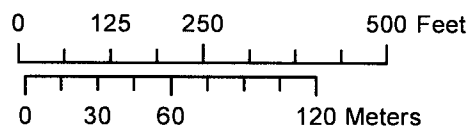
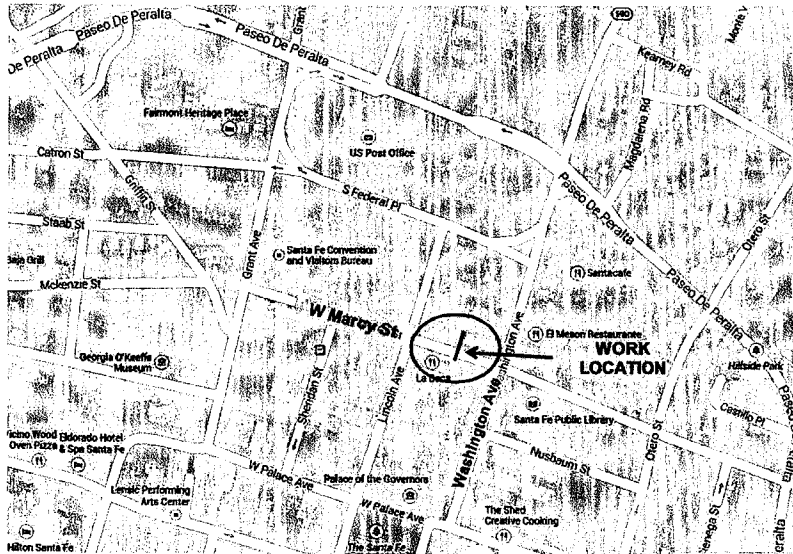


Figure1. Conduit route; Segment 6.

LOCATION MAP



SANTA FE COUNTY

TOWNSHIP: 17N
 RANGE: 9E
 SECTION: 24

CENTURYLINK
 JOB # E.717526
 ROW# NM011415RA01
 SANTA FE MAIN

Figure 2: Work Location Map

PLAN/PROFILE SUBSURFACE TRENCHING

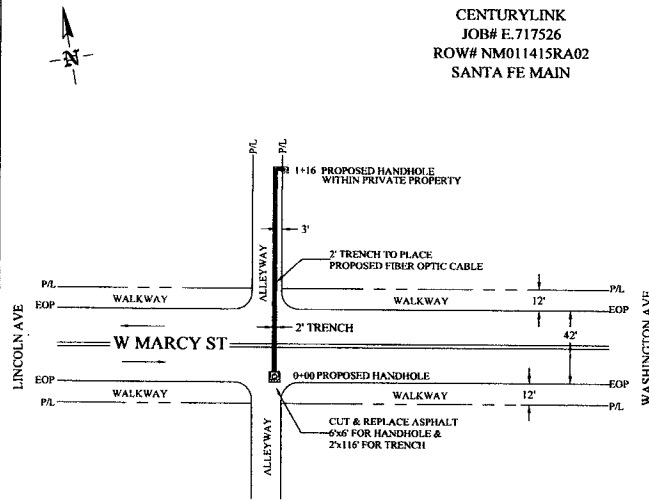
SHEET #01

CENTURYLINK

JOB# E.717526

ROW# NM011415RA02

SANTA FE MAIN



CROSS SECTION LOOKING EAST

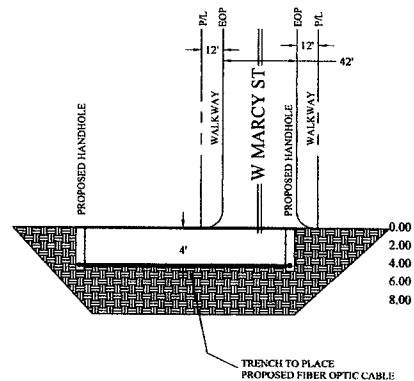


Figure 3: Plan/Profile Subsurface Trenching