



SANTA FE WATER REUSE FEASIBILITY STUDY

Path Toward Implementation

IMPLEMENTATION



The LRWSP Update will help us plan how best to met any water supply shortages beyond what the expanded reuse system can provide.

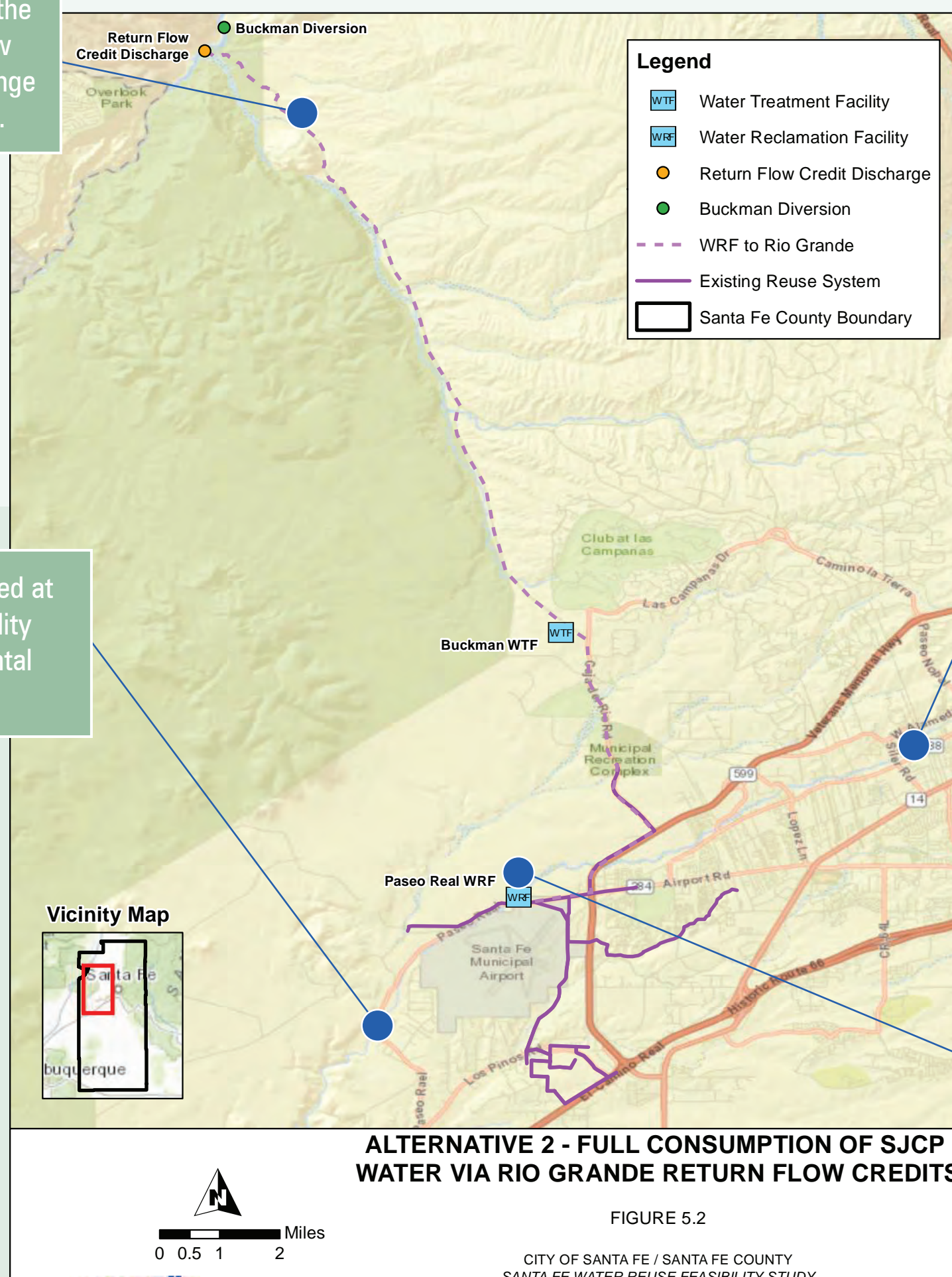
New Federal Legislation (Dec. 2016) enhances potential for Bureau of Reclamation construction funding support.

RECLAMATION
Managing Water in the West

Design and construction of the infrastructure to convey flow to the Rio Grande for exchange could start as soon as 2018.



Flows continue to be released at the Water Reclamation Facility for downstream environmental and cultural uses.



The City of Santa Fe will continue to create a "living river" via bypass flows from the Canyon Reservoirs.



Santa Fe will continue to operate its existing reuse system with "fit-for-purpose" water.